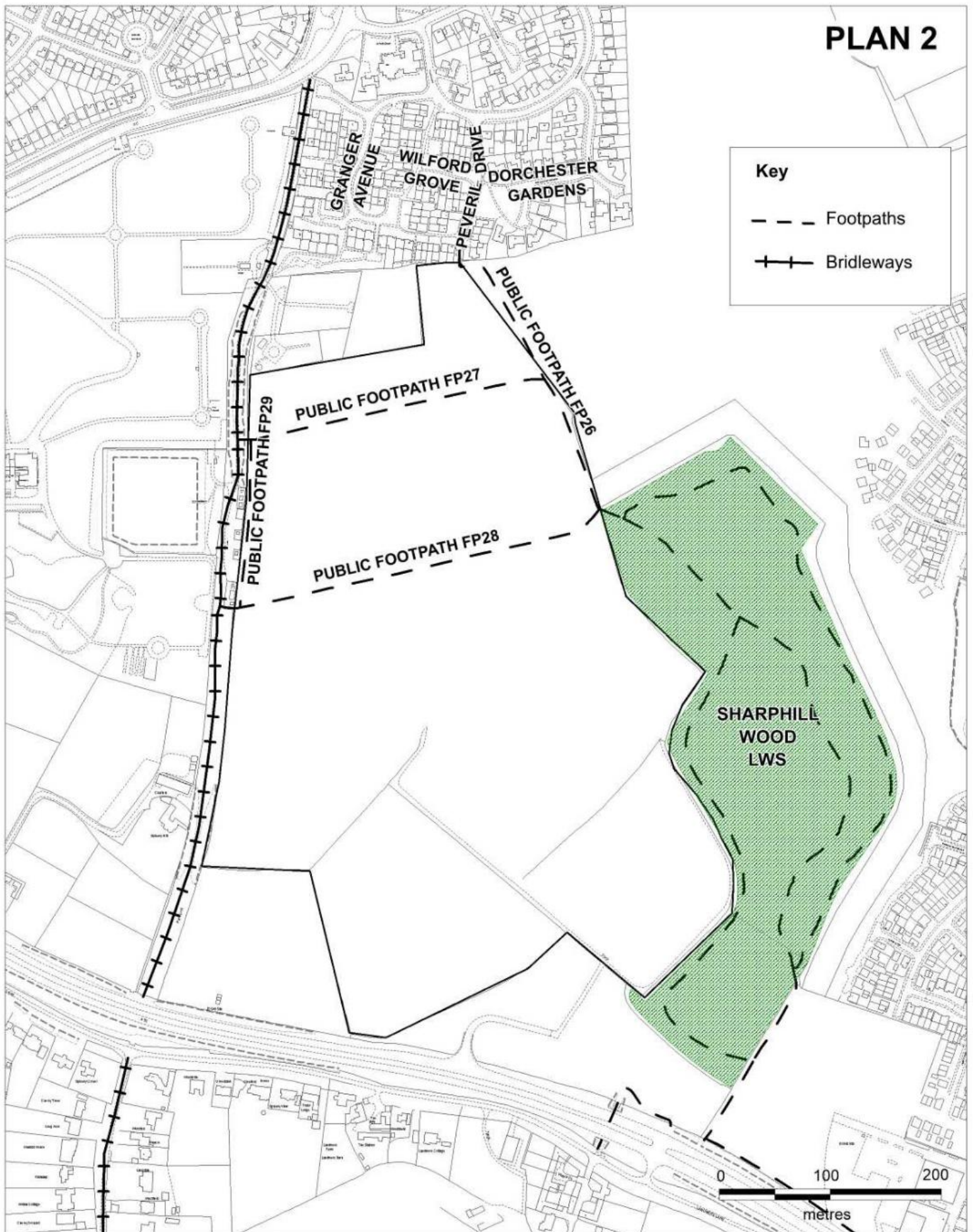
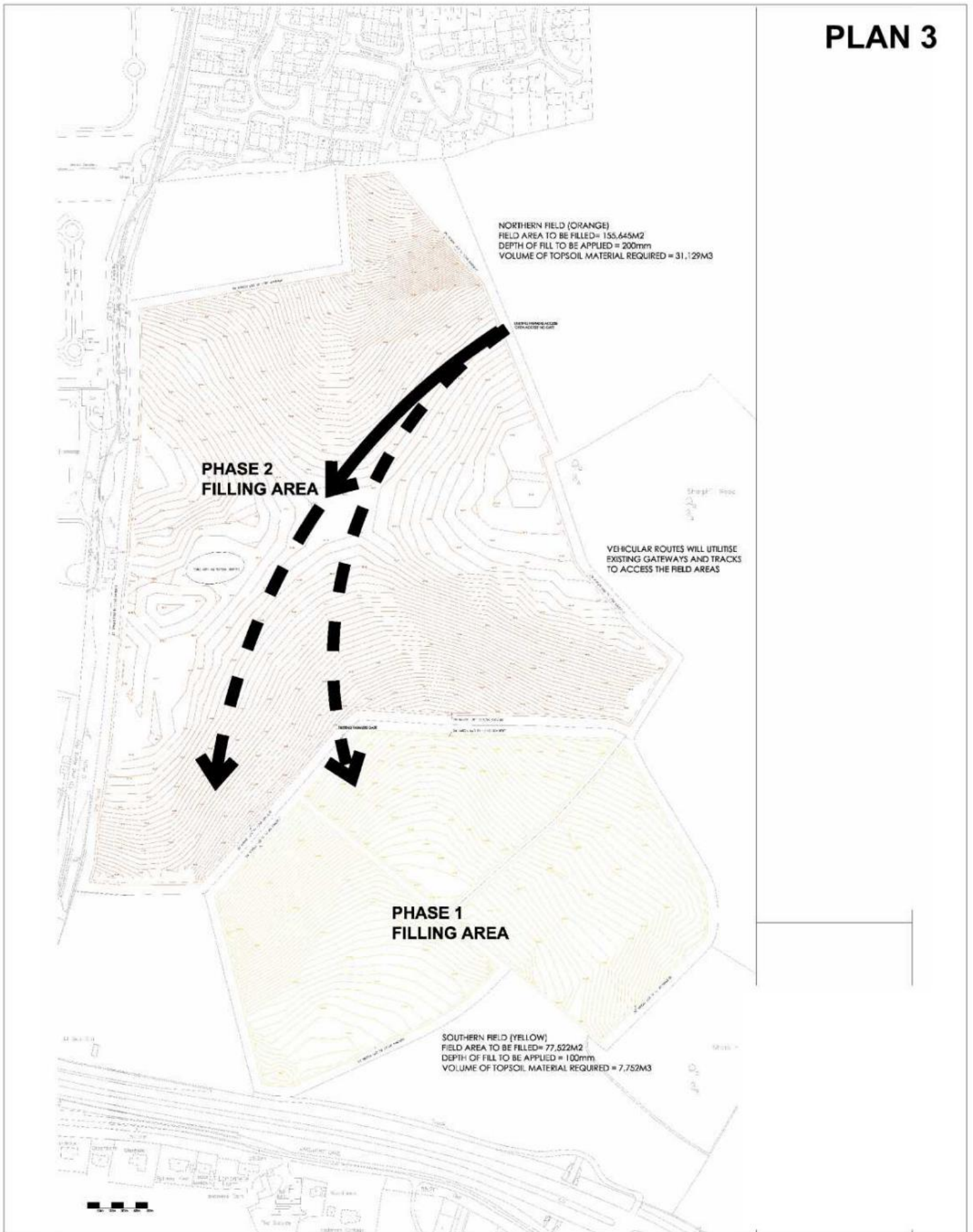


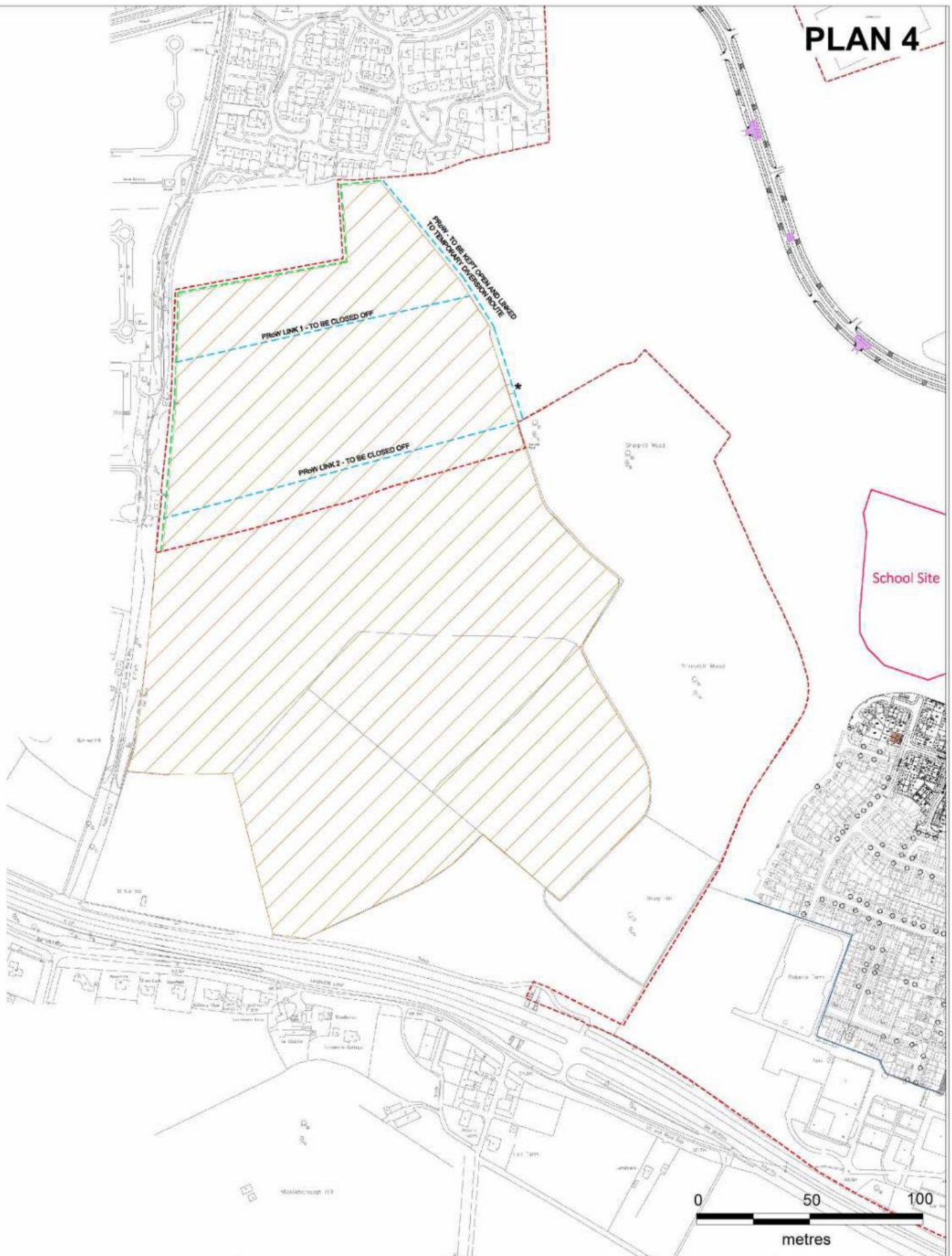
# PLAN 2





# PLAN 3







FORMING FOR SOLE BUND (10m width x 1.50m high)  
BUND TO BE PLACED PRIOR TO FILLING WORKS TO  
PREVENT ANY POTENTIAL SURFACE FLOODING  
BUND TO BE FORMED IN 300mm DEEP LAYERS  
COMPACTION OF LAYERS BY D6 DOZER

## PLAN 5



SURFACE WATER FLOW DIRECTION

