

Substance Misuse in Nottinghamshire

Understanding the Impact of Substance Misuse

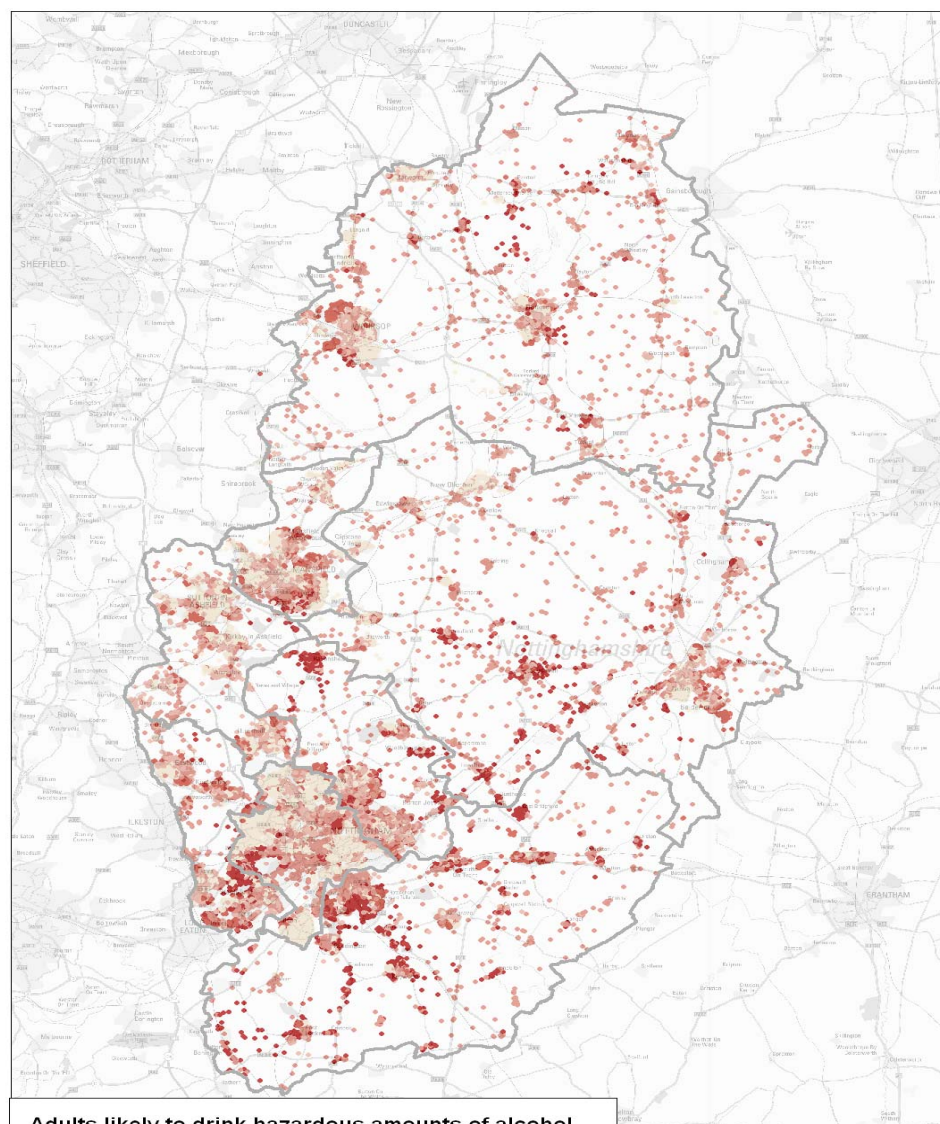
**Ill-health, crime and anti-social behaviour,
worklessness and loss of productivity**

The Use of Class A drugs generates an estimated £15.4 billion in crime and health costs each year.

Cost to economy of alcohol related lost working days £28.9million pa for Nottinghamshire

*A prolific alcohol misuser
Increasingly frail and in his early 60's
Alcohol dependent
Disengaged from alcohol services
Verbally and physically abusive
Medically unstable in cardiac failure
Flat unkempt
Multiple admissions to hospital via
ambulance costing up to £18,000 in a
month
Inconsistency in approach from services*





Adults likely to drink hazardous amounts of alcohol

Postcodes with index derived from risk factors

- 42.9 to 43 High index hazardous drinking
- 39.4 to 42.9
- 36.9 to 39.4
- 34 to 36.9
- 28.7 to 34 Low index hazardous drinking

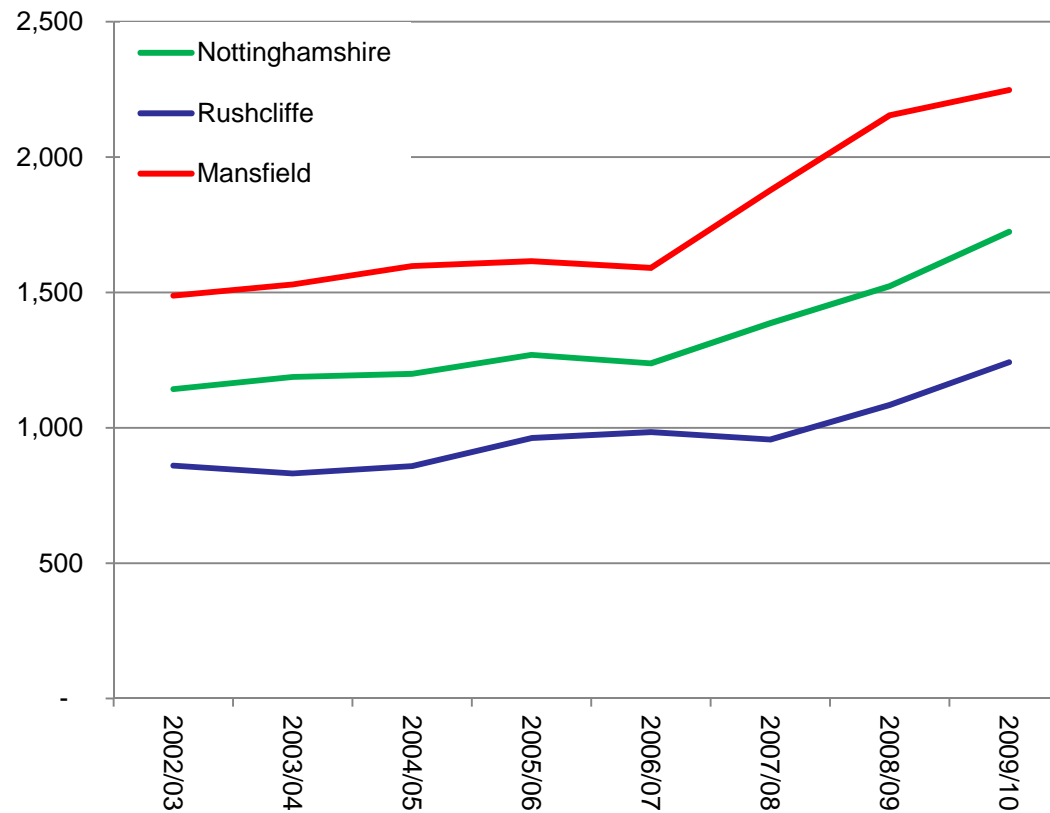
Dots are residential postcodes, with the colour representing the relative likelihood of individuals drinking more than the recommended amount spread over 5 or more days

Estimated Numbers Drinking In Nottinghamshire by category

Low Risk	401,600 (237,800 to 504,400)
Increasing Risk	105,800 (33,500 to 260,400)
Binge drinking	134,100 (113,700 to 157,100)
High Risk (previously known as Harmful drinkers)	42,700 (14,000 to 126,100)
Dependant drinkers	10,100 (5,050 to 18,950)

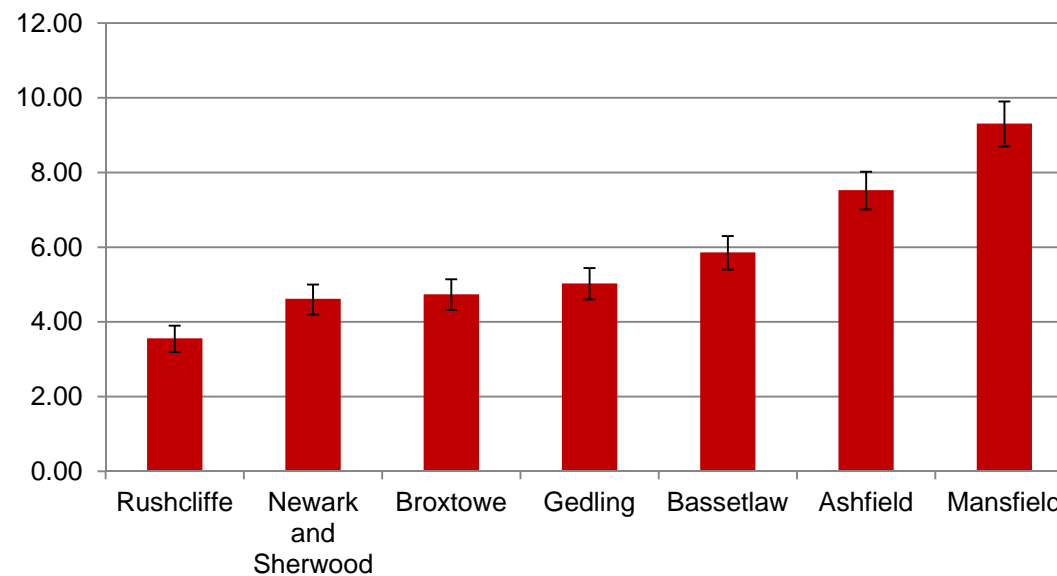
Source: North West Public Health Observatory synthetic estimates

Trends in Rate of alcohol-related hospital admissions per 100,000 population for Nottinghamshire County, Rushcliffe and Mansfield (Districts with lowest and highest rates)



Source: North West Public Health Observatory, Local Alcohol profiles

**Recorded crime attributable to alcohol, by District,
all persons, all ages, crude rate per 1,000 population (20010/11)**



Source: North West Public Health Observatory, Local Alcohol profiles
Error bars indicate 95% confidence intervals

Billy's story an alternative version

- *Multi agency case conference to address his complex needs attendees include his carers, cardiac and medical teams, police, East Midlands Ambulance Service, alcohol services and his GP*
- *A care plan is agreed with GP, Emergency Department, East Midlands Ambulance Service, Police, Admission Wards and informal carers.*
- *Billy assertively managed by alcohol service. Admitted for a 2 week detoxification to an alcohol unit in order for his social care, physical health needs and alcohol use to be assessed.*
- *Due to Billy's end of life care needs, GP commences care as per Gold Standards Framework*
- *Cardiac failure nurses referral made*
- *Adult Social Care & Health agree personalised budget so informal carers can spend more time engaging Billy.*

Outcome

- *Billy's health and emotional wellbeing improve considerably due to more holistic care*
- *Need for emergency care significantly reduced.*
- *Carers more confident and supported.*

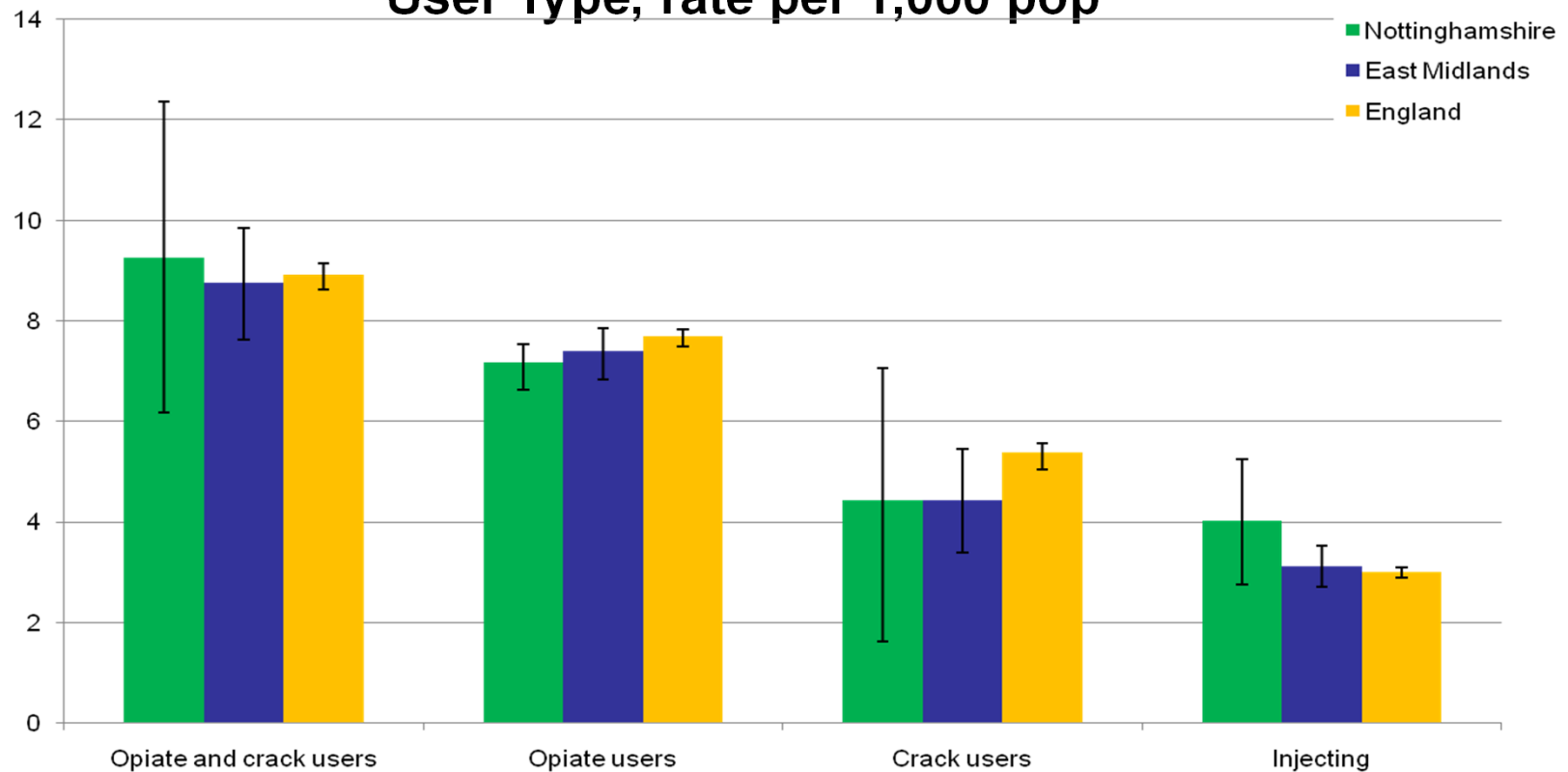


Joe's Story

- Injecting heroin daily
- Hepatitis C positive (a blood borne virus affecting the liver)
- Threat of eviction from his home
- Admitted to hospital after an overdose
- Stabilised and placed onto Methadone
- Relapses into drug use when released from hospital
- Evicted from home
- Completely disengaged from services
- Known to Police and Criminal Justice system because of previous offences



Prevalence Estimates 2009/10 for Nottinghamshire by User Type, rate per 1,000 pop



Source: National Treatment Agency
Error bars indicate 95% confidence intervals

Joe's story an alternative version

- Starts smoking heroin
- Accesses local community services
- Assessed within 24 hours
- Placed on a community detox
- Tested and vaccinated for Blood Borne Viruses
- Housing issues addressed
- Weekly 1-2-1 psychosocial interventions
- Undertakes accredited training
- Remains drug free and moves into mainstream college



Helen's Story



Mum is a former heroin addict

Dad left when she was 5. He still uses drugs.

Helen witnessed domestic violence

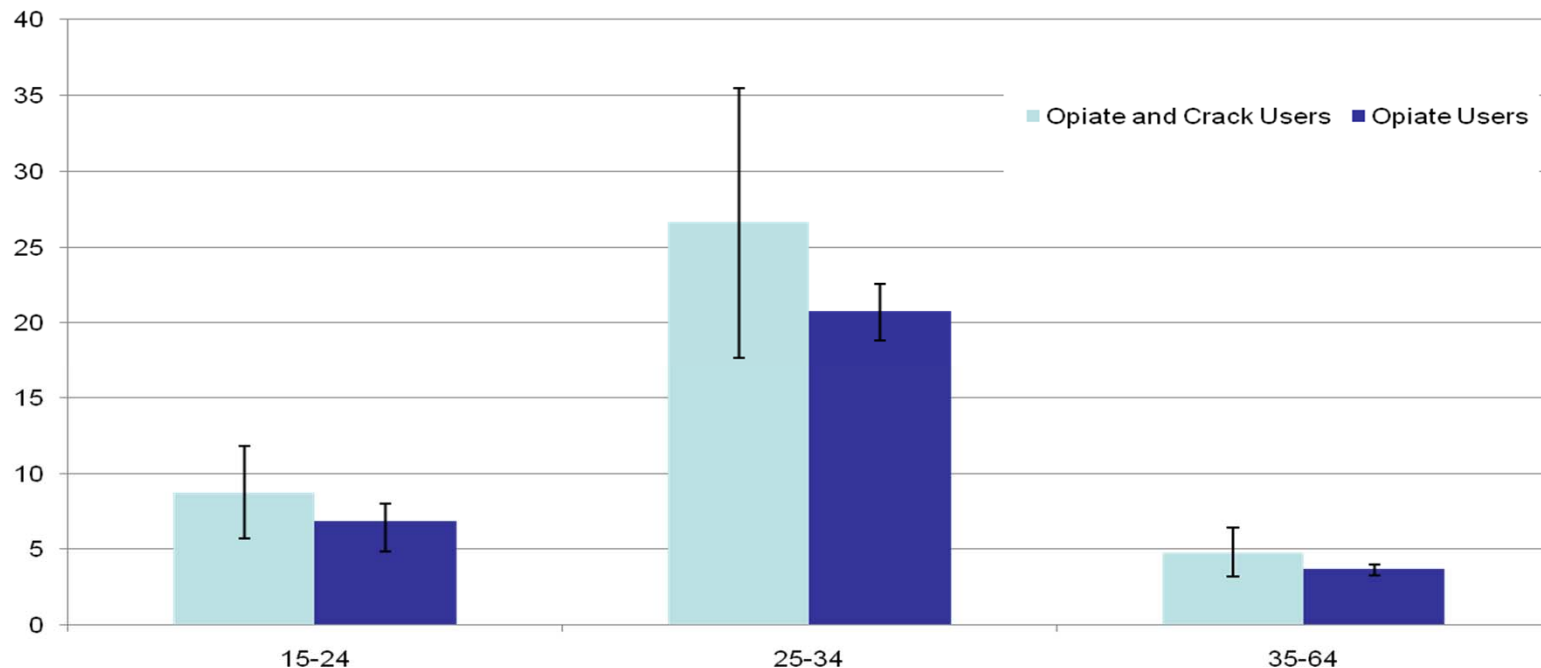
Helen began using cannabis at age 14 and progressed to amphetamine which she now injects.

School attendance declined in year 10.

Helen is at risk of sexual exploitation from the men she buys drugs from as she has limited money.

Helen's physical health has declined and she is withdrawn and angry. Her relationship with mum is poor.

Drug Prevalence Estimates by Age Group, rate per 1,000 pop



Source: National Treatment Agency
Error bars indicate 95% confidence intervals

Estimated Number of Users by User Type 2009/10

	Opiate &/or Crack User	95% Confidence intervals		Opiate users	95% Confidence intervals		Crack users	95% Confidence intervals		Injecting Users	95% Confidence intervals	
Nottinghamshire	4,710	3,134	6,272	3,655	3,474	3,937	2,257	923	3,683	2,047	1,425	2,692

Source: National Treatment Agency

Helen's Story



School identifies the issue.

Referral made to targeted services for assessment and support.

Medical assessment.

Advice on reducing potential harm, risks and counselling.

Alternative positive activities and help attending school

Mum involved in treatment plan and given help to improve her parenting.

Brother also offered positive package of activities.

Outcome

Amphetamine use stops as do exploitation and injecting risks.

Relationship with mum improves.

Helen gains 3 GCSEs and a place on an Education to Employment course.

Brother continues to engage in positive activities

Our Response includes...

- Work with Children, including PHSE and the National Healthy School Program
- Targeting those young people aged 10 to 15 years who are thought to be at risk from substance misuse
- Working with licensing and Trading Standards regarding access to alcohol
- Work place Substance Misuse policies
- Screening and Brief Interventions
- Treatment and Recovery Services in the community, criminal justice system and prisons
- Specialist Needle and Syringe Programme
- Multi agency case conferencing for those with complex needs
- Enforcement action by agencies such as Nottinghamshire Police and Customs and Excise
- Effective communication through the media, using techniques such as Social Marketing.