

The table lists all the divisions we are proposing as part of our final recommendations along with the number of voters per county councillor. The table also shows the electoral variances for each of the proposed divisions which tells you how we have delivered electoral equality.

Division name					Division name				
		No. of cilrs	Number of electors per councillor (2020)	Variance from average %			No. of cilrs	Number of electors per councillor (2020)	Variance from average %
Ashfield District					Mansfield District				
1	Ashfields	1	9,129	-6%	33	Mansfield East	2	9,613	-1%
2	Hucknall North	1	9,130	-6%	34	Mansfield North	2	9,137	-6%
3	Hucknall South	1	8,816	-9%	35	Mansfield South	2	9,823	2%
4	Hucknall West	1	8,860	-8%	36	Mansfield West	2	9,188	-5%
5	Kirkby North	1	9,775	1%	37	Warsop	1	9,665	0%
6	Kirkby South	1	10,127	5%	Newark & Sherwood District				
7	Selston	1	10,522	9%					
8	Sutton Central &East	1	9,320	-4%					
9	Sutton North	1	9,909	2%	38	Balderton	1	9,953	3%
10	Sutton West	1	10,071	4%	39	Blidworth	1	8,647	-11%
Bassetlaw District					40	Collingham	1	9,734	1%
11	Blyth & Harworth	1	10,197	5%	41	Farndon & Trent	1	8,806	-9%
12	Misterton	1	10,653	10%	42	Muskham & Farnsfield	1	10,440	8%
13	Retford East	1	9,569	-1%	43	Newark East	1	9,183	-5%
14	Retford West	1	9,745	1%	44	Newark West	1	9,000	-7%
15	Tuxford	1	8,846	-9%	45	Ollerton	1	10,013	4%
16	Worksop East	1	10,078	4%	46	Sherwood Forest	1	9,161	-5%
17	Worksop North	1	10,131	5%	47	Southwell	1	10,710	11%
18	Worksop South	1	10,139	5%	Rushcliffe Borough				
19	Worksop West	1	10,379	7%	48	Bingham East	1	9,297	-4%
Broxtowe Borough					49	Bingham West	1	8,891	-8%
20	Beeston Central & Rylands	1	9,366	-3%	50	Cotgrave	1	8,888	-8%
21	Bramcote & Beeston North	1	10,251	6%	51	Keyworth	1	8,754	-9%
22	Eastwood	1	10,022	4%	52	Leake & Ruddington	2	8,946	-7%
23	Greasley & Brinsley	1	10,040	4%	53	Radcliffe on Trent	1	9,970	3%
24	Nuthall & Kimberley	1	10,658	10%	54	West Bridgford North	1	9,939	3%
25	Stapleford & Broxtowe Central	2	9,091	-6%	55	West Bridgford South	1	9,974	3%
26	Toton, Chilwell & Attenborough	2	9,976	3%	56	West Bridgford West	1	9,481	-2%
Gedling Borough					Totals Average		66	9,670	
27	Arnold North	2	10,068	4%					
28	Arnold South	2	10,395	7%					
29	Calverton	1	10,286	6%					
30	Carlton East	1	10,074	4%					
31	Carlton West	2	10,267	6%					
32	Newstead	1	8,594	-11%					

What happens next?

We have now completed our review of Nottinghamshire County Council.

The recommendations must now be approved by Parliament. A draft order - the legal document which brings into force our recommendations - will be laid in Parliament. Subject to parliamentary scrutiny, the new electoral arrangements will come into force at the county elections in 2017.



Final recommendations on the new electoral arrangements for Nottinghamshire County Council

Summary report

Read the full report and view detailed maps at: www.consultation.lgbce.org.uk
Find out more at: www.lgbce.org.uk
Follow us on Twitter at: @LGBCE

Who we are

The Local Government Boundary Commission for England is an independent body set up by Parliament. We are not part of government or any political party. We are accountable to Parliament through a committee of MPs chaired by the Speaker of the House of Commons.

Our main role is to carry out electoral reviews of local authorities throughout England.

Electoral review

An electoral review examines and proposes new electoral arrangements for a local authority. A local authority's electoral arrangements are:

- The total number of councillors representing the council's voters ('council size').
- The names, number and boundaries of wards or electoral divisions.
- The number of councillors representing each ward or division.

Why Nottinghamshire?

We are conducting an electoral review of Nottinghamshire County Council to deliver improved levels of electoral equality for local voters.

Nottinghamshire currently has high levels of electoral inequality where some councillors represent many more - or many fewer - voters than others. This means that the value of your vote - in county council elections - varies depending on where you live in Nottinghamshire.

Our proposals

Nottinghamshire County Council currently has 67 county councillors. Based on the evidence we received during previous phases of the review, the Commission recommends that 66 county councillors should serve Nottinghamshire in future.

Electoral arrangements

Our final recommendations propose that Nottinghamshire's 66 county councillors should represent 46 single-member electoral divisions and 10 two-member electoral divisions across the county.

The Commission believes the final recommendations meet our statutory criteria to:

- Deliver electoral equality for voters.
- Reflect local community interests and identities.
- Promote effective and convenient local government.

Stage of review	Description
28 Oct 2014 - 9 Feb 2015	Public consultation on new division pattern
9 Jun - 10 Aug 2015	Public consultation on draft recommendations
17 Nov 2015	Publication of final recommendations
May 2017	Subject to parliamentary approval - implementation of new arrangements at county elections

Summary of our recommendations

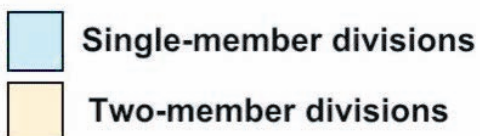
Our final recommendations propose that Nottinghamshire county councillors should represent 46 single-member electoral divisions and 10 two-member electoral divisions across the county.

Before drawing up the final recommendations the Commission carried out two stages of public consultation, initially inviting proposals for a new pattern of divisions for Nottinghamshire, from which we produced our draft recommendations. These were subject to public consultation. We have considered all the submissions received during both phases of consultation.

The Commission believes that the final recommendations meet the obligations –which are set out in law –to:

- Deliver electoral equality for voters
- Reflect local community interests and identities
- Promote effective and convenient local government.

You can read the full report on our website at www.lgbce.org.uk.



Find out more:

www.consultation.lgbce.org.uk

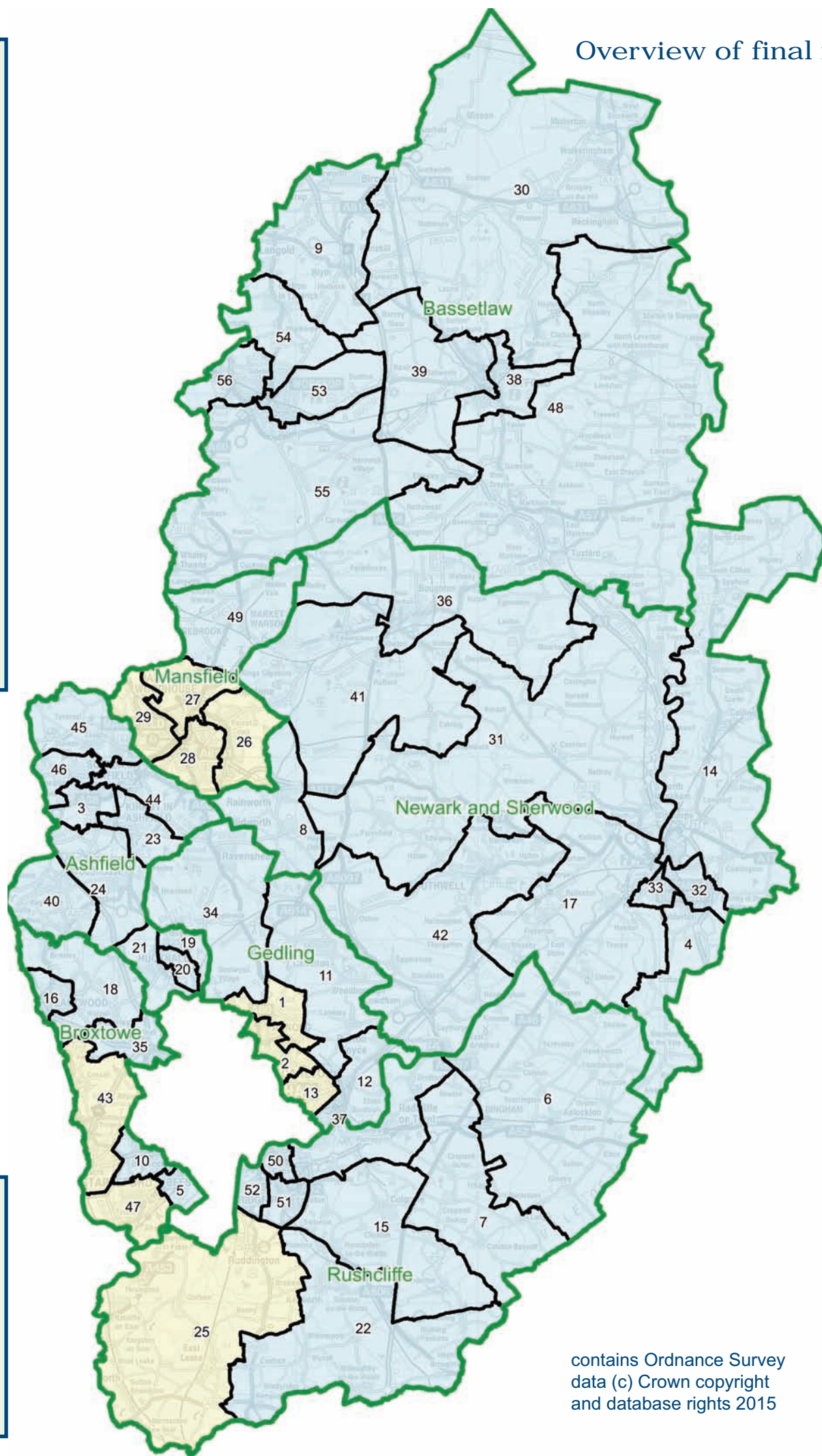
- view the map of our recommendations down to street level.
- zoom into the areas that interest you most.
- read the full report of our recommendations.
- compare the final recommendations with the draft proposals and existing arrangements.
- find out more about the electoral review process

Overview of final recommendations for Nottinghamshire County Council

View this map online and explore it in more detail at:
www.consultation.lgbce.org.uk

Follow the Commission on Twitter: @LGBCE

If you are viewing this page online, click on the map to go straight to our interactive mapping area



Map key:

1	Arnold North	26	Mansfield East
2	Arnold South	27	Mansfield North
3	Ashfields	28	Mansfield South
4	Balderton	29	Mansfield West
5	Beeston Central & Rylands	30	Misterton
6	Bingham East	31	Muskham & Farnsfield
7	Bingham West	32	Newark East
8	Blidworth	33	Newark West
9	Blyth & Harworth	34	Newstead
10	Bramcote & Beeston North	35	Nuthall & Kimberley
11	Calverton	36	Ollerton
12	Carlton East	37	Radcliffe on Trent
13	Carlton West	38	Retford East
14	Collingham	39	Retford West
15	Cotgrave	40	Selston
16	Eastwood	41	Sherwood Forest
17	Farndon & Trent	42	Southwell
18	Greasley & Brinsley	43	Stapleford & Broxtowe Central
19	Hucknall North	44	Sutton Central & East
20	Hucknall South	45	Sutton North
21	Hucknall West	46	Sutton West
22	Keyworth	47	Toton, Chilwell & Attenborough
23	Kirkby North	48	Tuxford
24	Kirkby South	49	Warsop
25	Leake & Ruddington	50	West Bridgford North
		51	West Bridgford South
		52	West Bridgford West
		53	Worksop East
		54	Worksop North
		55	Worksop South
		56	Worksop West

contains Ordnance Survey
data (c) Crown copyright
and database rights 2015