

Public Health Performance and Quality Report for Health Contracts

Quarter One (April – June) 2013/14

Contents	
Page	Area
2	Format of the Report
3	Key Indicators for Priority Public Health Functions, including Details and Remedial Actions and Quality Issues: <ul style="list-style-type: none">- NHS Health Check- National Child Measurement Programme- Sexual Health- Public Health Advice to the CCGs (via a MoU)- Local Authority (LA) role in dealing with health protection incidents, outbreaks and emergencies
15	Key Indicators for other Public Health Functions, including Details and Remedial Actions and Quality Issues.

Format of the Report

The contracts are grouped together in relation to the Public Health function that they relate to. In the first table, the functions and contracts have been linked to the National Public Health Outcomes Framework and the priorities from the Nottinghamshire Health and Wellbeing Strategy.

Annual financial values of contracts are summarised into categories as shown below

Annual Financial Value of the Contract Range	Category
More than or equal to £1,000,000	High
£100,000 to £999,999 inclusive	Medium High
£10,000 to £99,999 inclusive	Medium
Less than or equal to £9,999	Low

For each of the 22 functions, the name of the providers of the associated contracts are included, along with appropriate indicators, plan and actual figures achieved, as outlined in the service specifications.

Details and remedial actions, key issues affecting delivery, actions to address the issues and whether there has been a quality and safety issues in relation to the contract then follow.

1. Public Health Priority: NHS Health Checks

National Public Health Outcomes Framework		Health and Wellbeing Strategy Priorities
Outcome	Reference National Public Health (PH) Outcomes Framework	
Recorded diabetes Take up of the NHS Check programme – by those eligible*	PH 2.17 PH 2.22	- Physical Disability, Long term Conditions and Sensory Impairment - To reduce early mortality and improve quality of life for individuals with Long Term Conditions (LTC)
Category of contract value	Medium High	Distributed across 106 providers

*eligible = adults in England aged between 40-74 who have not already been diagnosed with heart disease, stroke, diabetes or kidney disease

Name of Providers
GPs

Target and Measure Newark & Sherwood, Ashfield, Mansfield, Gedling, Rushcliffe, Broxtowe	Quarter One - 2013/14 Plan	Quarter One – 2013/14 Actual
Numbers of eligible patients who have been offered health checks	17,790	8,891
Numbers of patients offered who have received health checks	11,565	4,804
Bassetlaw		
Numbers of eligible patients who have been offered health checks	1,910	1,888
Numbers of patients offered who have received health checks	1,394	1,035
Nottinghamshire County Council - total		
Numbers of eligible patients who have been offered health checks	19,700	10,779
Numbers of patients offered who have received health checks	12,959	5,839

Details and Remedial Actions:
Key Issues affecting delivery: High degree of variation in coverage and uptake between practices Risk of inequalities and missing high risk groups Different remuneration arrangements and targets in Bassetlaw, City and County due to legacy from previous commissioners
Actions to address issues: Actions to address issues: 1) implement the proposed NHS Health Check Commissioning and Implementation Plan (medium term action) 2) continuing shared ownership of action plans with the Clinical Commissioning Groups (immediate) 3) submit an update on the NHS Health Check Commissioning and Implementation Plan following procurement (medium term).
Quality and Patient Safety: no issues reported

2. Public Health Priority: National Child Measurement Programme (NCMP)

National Public Health Outcomes Framework		Health and Wellbeing Strategy Priorities
Outcome	Reference National Public Health (PH) Outcomes Framework	
Excess weight * ages 4-5 (Reception Year)	PH 2.6i	- To achieve a sustained downward trend in the level of excess weight in children by 2020
Excess weight * ages 10-11 (Year 6)	PH 2.6ii	
Category of contract value	Medium High	

Name of Providers
County Health Partnership
Bassetlaw Health Partnership

This is measured on an annual basis. Operational meetings continue with the providers to ensure the programme is delivered to the timescale, and quality indicators are monitored. These will be reported over the year, including participation rates.

3. Public Health Priority: Comprehensive Sexual Health

National Public Health Outcomes Framework		Health and Wellbeing Strategy Priorities
Outcome	Reference National Public Health (PH) Outcomes Framework	
Chlamydia diagnoses (15-24 year olds)	PH 3.2	None
People presenting with HIV at a late stage of infection	PH 3.4	
Category of contract value	High	

Name of Providers	Service
Nottingham University Hospitals	Genito-Urinary Medicine (GUM)
	GUM – community
	Contraceptive and Sexual Health service (CaSH)
Sherwood Forest Hospital Foundation Trust	Genito-Urinary Medicine (GUM)
	CaSH
	Sexions
Doncaster & Bassetlaw Hospital	Genito-Urinary Medicine (GUM)
Terrence Higgins Trust	HIV Advice/support
Bassetlaw Health Partnership	CaSH
Community Pharmacists – Local Enhanced Service (LES)	<ul style="list-style-type: none"> - Emergency Hormonal Contraceptive (EHC) - C-Card
GPs – Local Enhanced Service	Long-Acting Reversible Contraceptive (LARC) <ul style="list-style-type: none"> - Sub Dermal Implants (Implanon) - Long Acting Reversible Contraception (IUD/IUCD)

Work is on-going during 2013/2014 to identify what quality performance data of contracts is available that provides meaningful information and that gives a full picture of providers performance.

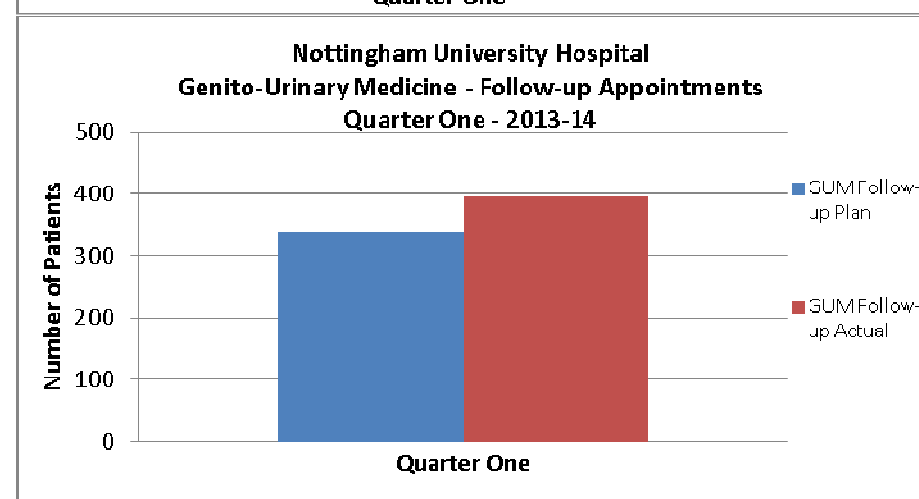
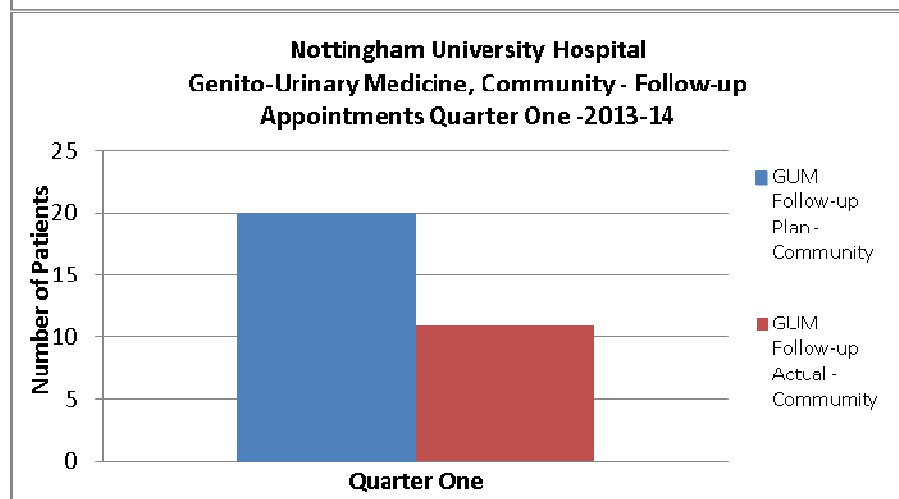
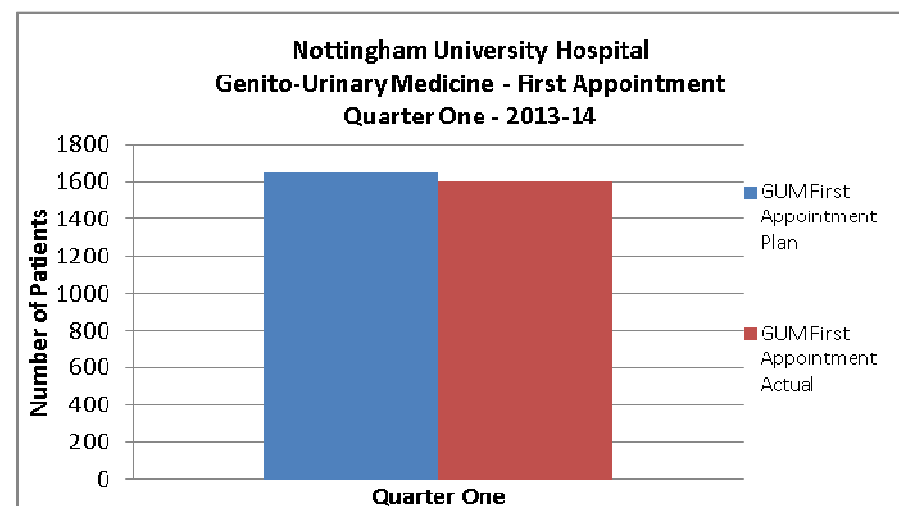
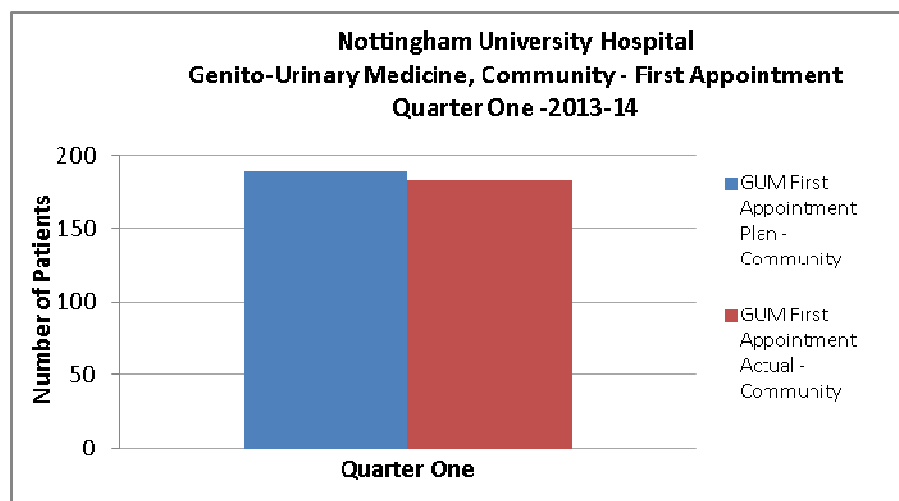
Genito-Urinary Medicine (GUM)

Nottinghamshire County Council is an Associate Commissioner to the Nottingham University Hospitals, Sherwood Forest Hospital Foundation Trust and Doncaster and Bassetlaw Hospital. These three Trusts provide Genito-Urinary Medicine and Contraceptive and Sexual Health services for the residents of Nottinghamshire. The contract team is working with the Lead Commissioner for each of these contracts to ensure it receives meaningful and timely data, to enable performance to be monitored and reported on.

GUM service is open access service. The providers are paid for services on an activity basis, as opposed to a block contract. The price is set nationally. Activity plans are developed, to aid with budget setting and monitoring.

Nottingham University Hospitals

The four graphs below summarise the activity against plan for patients accessing Genito-urinary Medicine, both hospital based and community based clinics. They show activity for first appointments and follow-up appointments.

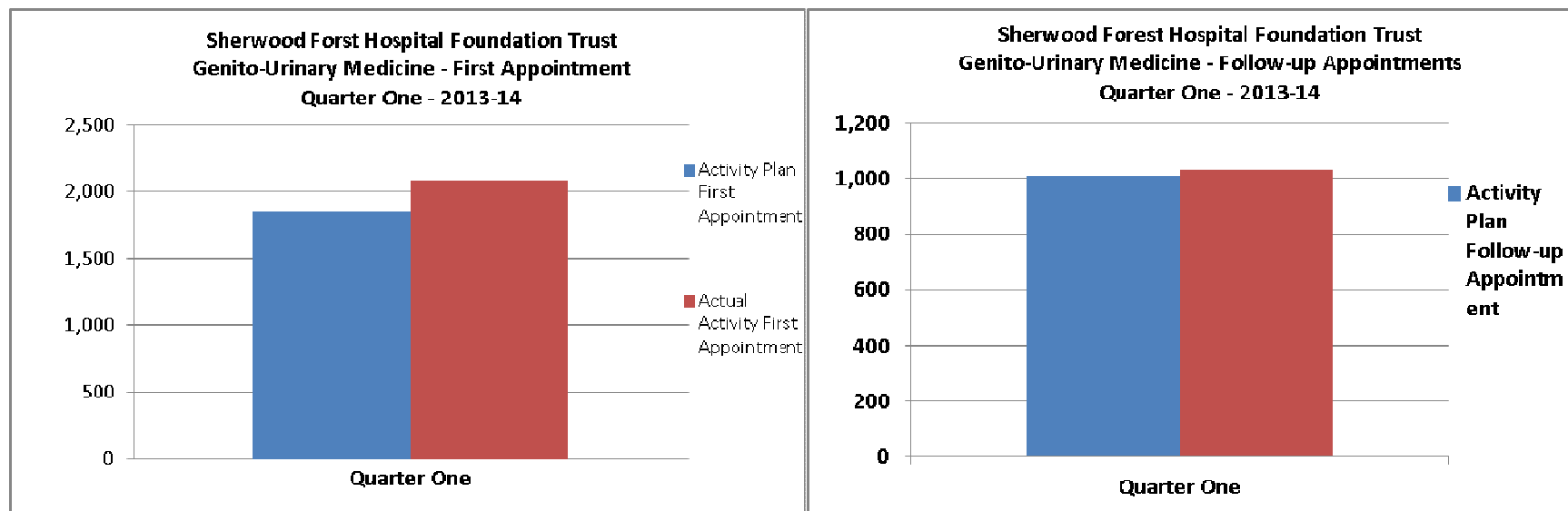


NUH first appointments have underachieved by 3% in clinic and underachieved by 3% in community

NUH follow up appointments have over achieved by 17% in clinic and underachieved in community by 45%

Sherwood Forest Hospital Foundation Trust

The two graphs below summarise the activity against plan for patients accessing hospital based Genito-Urinary Medicine. They show activity for first appointments and follow-up appointments for quarter one 2013/14.



SFHT first appointments have over achieved by 13%

SFHT follow-up appointments have overachieved by 2%

SEXions	Quarter One – 2013/14
Number of 1:1 contacts with young people	405
Number of lessons delivered	56
Number of young people reached	1907

Doncaster & Bassetlaw Hospital

The data for quarter 1 is not available to date; this will be reported in the quarter 2 report.

Contraceptive and Sexual Health Services (CaSH)

Providers input their activity onto a national database (Sexual Health Reproductive Activity Dataset – SHRAD). Information will be available via the Health and Social Care Information Centre website later in the year. Public Health is working with the providers to ensure that the data is also provided via locally sharing agreements in addition to the national database to support contract monitoring and performance management. An updated position will be reported in the quarter 2 report.

Terrence Higgins Trust

This service is provided across the City and County. Approximately 23% of clients of the service are county residents. Data is not supplied with County/City breakdown.

Indicators	Target	Actual Quarter One 2013-14
Point of care testing	60 per quarter	85
Condom distribution	2,500 per annum	1062
Outreach events	3 per quarter	6
Chlamydia - All 15-24 year olds offered a screen	100%	100%

NHS Nottinghamshire County Community Pharmacists– C-Card and Emergency Hormonal Contraceptive

These are demand-led services, therefore there are no targets. In quarter one 2013/14 there were 138 transactions.

An updated position will be reported in the quarter 2 report for Emergency Hormonal Contraceptive.

Nottinghamshire GPs - Long-Acting Reversible Contraceptive

This is a demand-led service, therefore there are no targets.

Long-Acting Reversible Contraceptive (LARC)	Activity - Year 2013/14
	Quarter One
Sub Dermal Implants (Implanon) - Insertions	346
Sub Dermal Implants (Implanon) - Removal	201
Sub Dermal Implants (Implanon) – Insertion and Removal combined	133
Long Acting Reversible Contraception – Insertions	641
Long Acting Reversible Contraception - Removals	329

Bassetlaw Community Pharmacists – Emergency Hormonal Contraceptive

This is a demand-led service, therefore there are no targets.

An updated position will be reported in the quarter 2 report for Emergency Hormonal Contraceptive.

Bassetlaw GPs - Long Acting Reversible Contraception (IUD/IUCD)

7 GP practices provided activity in quarter 1 2013/14. This is a demand-led service, therefore there are no targets.

Time Period - Activity	Insertions	Removals	Reviews
April 2012 – December 2012	220	103	161
April 2013 – June 2013	57	N/A	30

Bassetlaw GPs – Sub-Dermal Implants

7 GP practices provided activity in quarter 1 2013/14. This is a demand-led service, therefore there are no targets.

Time Period - Activity	Insertions	Removals	Removal and fitting
April 2012 – December 2012	177	101	35
April 2013 – June 2013	48	30	23

4. Public Health Priority: Public Health Advice to Clinical Commissioning Groups

A Memorandum of Understanding (MoU) for Public Health (PH) advice to the Nottinghamshire County Clinical Commissioning Groups (CCG) has been agreed for the period 2013 – 2016. Each CCG has signed an MoU adapted to reflect the specific needs of each CCG.

The Chief Operating Officer Executive Group (for CCGs) receives a Checkpoint Report quarterly, this provides an update on the work undertaken and future actions relating to the delivery of the MoU.

5. Public Health Priority: Steps Local Authorities must perform to protect the health of their local populations

There is a Health Protection Strategy Group (HPSG) which feeds in to the Health and Wellbeing Implementation Group. It also links in with Public Health England and the NHS Commissioning Board Area Team.

The purpose of the HPSG is to provide proper assurance regarding outcomes and arrangements for the protection of the health of the population to Nottinghamshire County Health and Wellbeing Board and Implementation Group.

NHS Clinical Commissioning Groups fund the provision of treatment services for communicable diseases. The local authority provides advice about gaps in provision and evidence about what works to local NHS commissioners to ensure that health protection related needs are addressed effectively. Current work on this includes developing options for improving local services for people in central Nottinghamshire who are diagnosed with Hepatitis C, and on-going public health leadership of TB Stakeholder groups.

6. Accidental Injury Prevention

Public Health provides a leadership function with a work programme in place. Currently there are no contracts.

7. Alcohol and Drug Misuse

National Public Health Outcomes Framework		Health and Wellbeing Strategy Priorities
Outcome	Reference National Public Health (PH) Outcomes Framework	
Successful completion of drug treatment	PH 2.15	<ul style="list-style-type: none"> - Alcohol related admissions to hospital - Mortality from Liver Disease - Successful completion of drug treatment
People entering prison with substance dependence issues who are previously not known to community treatment	PH 2.16	
Category of contract value	High	

All drug treatment agencies must provide a basic level of information to the National Drug Treatment Monitoring System (NDTMS) on their activities each month (referred to as the Core Data Set). The Core Data Set is made available for quarter 1 in September. Local providers are required to upload their performance data to the NDTMS and to report on a locally agreed performance dashboard. The NDTMS data for Quarter 1 and dashboard will be presented in the quarter 2 report.

Service Providers	
The Recovery Partnership	
Bassetlaw Drug and Alcohol Service	
Nottinghamshire Probation Substance Misuse Service	
Doncaster and Bassetlaw Hospital	
Sherwood Forest Hospitals Foundation Trust	
Nottinghamshire Healthcare Trust	
Carer's Federation	
Framework Housing Association	
Hetty's	
GPs	
Community Pharmacists	

Supervised Consumption – Local Enhanced Service (individual community pharmacists) – 2013/14

An updated position will be reported in the quarter 2 report for Supervised Consumption.

Summary / Performance Issues:

- A detailed performance report is presented to the Nottinghamshire Substance Misuse Partnership Joint Commissioning Group for Adult Treatment and Recovery Services.
- Community Drug Misuse Services are currently subject to a tender process. As an outcome of the tender process it is anticipated that an award will be made to a provider to commence delivery of the Community Recovery Service during 2014/15.
- Contract Service Review meetings have been established, with the main providers.

Actions to be taken:

- Continue to monitor all providers action plans in relation to their performance against targets.
- Work with the Public Health policy lead to ensure contract performance issues identified by the Joint Commissioning Group are actioned.

Quality and Patient Safety:

It is recognised that the clients accessing these services may present as vulnerable adults. The providers commissioned to deliver these services are required to demonstrate experience of delivering services to this vulnerable client group and have clear arrangements to reduce the impact of the inherent risks to ensure patient safety. In quarter 1 2013-14 there were 2 serious incidents reported by the Recovery Partnership (Nottinghamshire Healthcare Trust), both were investigated and signed off during the period. No outstanding issues.

Nottinghamshire County Council is an Associate Commissioner to the Nottinghamshire Healthcare Trust, Sherwood Forest Hospital Foundation Trust and Doncaster and Bassetlaw Hospital. These three Trusts provide Drug and Alcohol services for the residents of Nottinghamshire. The contract team is working with the Lead Commissioner for each associate contract to ensure that meaningful and timely data is shared to support performance monitoring.

8. Children and Young People

The contracts in relation to children and young people are:

- School Nursing
- Special School Nursing
- Healthy Schools Programme.

A Children's Integrated Commissioning Hub is being established which will report to the Children's Trust Board. The performance management of the above contracts will be the responsibility of the Hub.

9. Community Safety and Violence Prevention

National Public Health Outcomes Framework		Health and Wellbeing Strategy Priorities
Outcome	Reference National Public Health (PH) Outcomes Framework	
Domestic Abuse Violent crime (including sexual violence)	PH 1.11 PH 1.12	Crime and Community Safety: - Violent crime - Domestic violence - Falls and injuries in the over 65's
Category of contract value	Medium High	

Service Providers
Nottinghamshire Women's Aid
Citizen's Advice Bureaus
Gedling Community Voluntary Services
The Friary

Nottinghamshire Women's Aid

Nottinghamshire County Council Public Health has a contract with Nottinghamshire Women's Aid to provide a Domestic Violence Children's Outreach Service in Bassetlaw. The contract team has established links with the service and has set up Contract Service Review Meetings in 2013/14.

Citizen's Advice Bureau (Bassetlaw Positive Paths)

The service provides welfare benefits advice and support to the clients/patients who have a critical illness and/or limiting long term illness including cancer and other conditions.

Summary:

Annual Target	2012/13 Target	2012/13 Actual	2013/14 Q1 Target	2013/14 Q1 Actual
520 patients/clients to be provided with advice and support services	520	582 patients/clients assisted = 111.9% of target	130	153 patients/clients assisted
Additional Annual income for patients/clients of £1,240,774	£1,240,774	Additional Annual income for patients/clients £2,420,745	£310,193.50	£374,397.61

The Friary

The aim of the drop-in facility, provided at The Friary is to improve the quality of life and self-esteem of vulnerable people affected by homelessness, lack of permanent housing, or long term unemployment.

An updated position will be reported in quarter 2.

10. Dental Public Health

National Public Health Outcomes Framework		Health and Wellbeing Strategy Priorities
Outcome	Reference National Public Health (PH) Outcomes Framework	
Tooth decay in children aged 5	PH 4.2	None identified
Category of contract value	Medium High	

Service Provider
County Health Partnership – Oral Health Promotion Team
Water Suppliers (Severn Trent/Anglican Water) for water fluoridation (no contract monitoring information)

An updated position will be reported in quarter 2.

11. Immunisation Screening & Support

National guidance states that Public Health will provide a local leadership function for the preventative aspects of health protection (e.g. national screening and immunisation programmes commissioned by NHS England and the implementation of other local strategies for the control of communicable diseases by NHS and other organisations).

A work programme supports this priority.

12. Infection Control

Full responsibility and funding for community infection control rests with the public health teams embedded within local authorities. There is a work programme in place to support this priority.

Nottinghamshire County Council has commenced a review of arrangements for Community Infection Prevention and Control* in order to ensure that it has affordable arrangements in place for addressing the future needs of the local population. Progress on this will be monitored by the Health Protection Strategy Group.

* “community infection prevention and control” refers to the prevention of infections in those receiving care in either health or social care settings, especially in community settings such as GP practices or care homes. It specifically excludes the infection control work which takes place in settings which are managed by healthcare providers.

13. Mental Health

Public Health provides a leadership function with a work programme in place. Currently there are no contracts.

14. Nutrition

National Public Health Outcomes Framework		Health and Wellbeing Strategy Priorities
Outcome	Reference National Public Health (PH) Outcomes Framework	
Diet Excess weight in adults Excess weight in 4-5 and 10-11 year olds	PH 2.11 PH 2.12 PH 2.6	<ul style="list-style-type: none"> - To achieve a downward trend in the level of excess weight in adults by 2020 - A sustained downward trend in the level of excess weight in children by 2020
Category of contract value	Medium High	

Service Providers
Ashfield District Council
Bassetlaw Health Partnership
County Health Partnership
Mansfield District Council
Newark and Sherwood District Council

Ashfield District Council Target and Measure	2012/13 Annual Target	2012/13 Actual	2013/14 Annual Target	2013/14 Q1 Target	2013/14 Q1 Actual
Targeted one-off awareness sessions - Community	43	53	43	10	9
Targeted one-off awareness sessions – School	25	25	25	1	6
Targeted one-off awareness sessions - Workplace	4	7	4	1	2
Cookery Courses (cook & eat) - School	4	4	4	3	1
Cookery Courses (cook & eat) – GP Referral	2	2	2	1	1

Service Provider = Bassetlaw Health Partnership

No data available

County Health Partnership Target and Measure	2012/13 Annual Target	2012/13 Actual	2013/14 Annual Target	2013/14 Q1 Target	2013/14 Q1 Actual
Targeted one-off awareness sessions - Community	160	225	160	No Quarterly Targets	70
Targeted one-off awareness sessions – School / nursery / children / young people	180	395	180		89
Targeted one-off awareness sessions - Workplace	15	15	15		6
Cookery Courses (cook & eat) - Community	67	62	67		34
Cookery Courses (cook & eat) – School	15	15	15		11
Training sessions, minimum of 10-12 participants per course	65	55	65		26
Awareness Raising Events	20	43	20		14

Mansfield District Council Target and Measure	2012/13 Annual Target	2012/13 Actual	2013/14 Annual Target	2013/14 Q1 Target	2013-14 Q1 Actual
Targeted one-off awareness sessions - Community	36	45	36	No Quarterly Targets	9
Targeted one-off awareness sessions – School	25	26	25		6
Targeted one-off awareness sessions - Workplace	24	19	24		2
Cookery Courses (cook & eat) - School	4	4	4		1
Cookery Courses (cook & eat) – GP Referral	2	2	2		1

Newark & Sherwood District Council Target and Measure	2012/13 Annual Target	2012/13 Actual	2013/14 Annual Target	2013/14 Q1 Target	2013-14 Q1 Actual
Targeted one-off awareness sessions - Community	60	117	60	No Quarterly Targets	37
Targeted one-off awareness sessions – School	140	137	140		46
Targeted one-off awareness sessions - Workplace	25	19	25		3
Cookery Courses (cook & eat) - Community	20	18	20		5

Details and Remedial Actions

As well as the above activity being collated, there is on-going evaluation. These services are being reviewed to ensure equity of provision across the county.

Notice has been served on all the contracts, with new arrangements in place during 2014/15.

Quality and Patient Safety: no issues reported.

15. Physical Activity

National Public Health Outcomes Framework		Health and Wellbeing Strategy Priorities
Outcome	Reference National Public Health (PH) Outcomes Framework	
Proportion of physically active and inactive adults	PH 2.13	- Utilisation of green space for exercise/health reasons
Category of contract value	Medium	

Service Providers – Exercise Referral Schemes
Bassetlaw District Council
Gedling Borough Council
Newark and Sherwood District Council

Bassetlaw District Council Target and Measure	Full year - 2012/13 Target	Full year - 2012/13 Actual	Q1- 2013/14 Target	Q1- 2013/14 Actual
Number of referrals	400	473	100	123
Number of people who start the 12 programme	340	412	85	97
Number of people completed the 12 week programme *	204	Figure not known*	51	11
Patient Satisfaction Surveys returned	60%	39%	60%	29%
Patients who reported the programme as positive experience	85%	87%		27%

* this figure is not yet known. For example, a referral that started in the scheme on the 12.01.2013 will not be due a 12-week assessment until the 12.04.13. This will be reported on in the first quarter of 2013/14.

Gedling Borough Council Target and Measure	Full year - 2012/13 Target	Full year - 2012/13 Actual	Q1- 2013/14 Target	Q1- 2013/14 Actual
Number of referrals	No target	515	No target	Data not rcvd
Number of people who start the 12 programme	300	393	300	Data not rcvd
Percentage of people completed the 12 week programme	60%	46.6%	60%	Data not rcvd
Percentage of those reaching goal	50%	46%	50%	Data not rcvd

Newark and Sherwood District Council Target and Measure	Full year - 2012/13 Target	Full year - 2012/13 Actual	Q1- 2013/14 Target	Q1- 2013/14 Actual
Number of referrals	No target	223	No target	
Number of people who start the 12 programme	300	60	75	70
Number of starters that did not complete 12 weeks	No target	49	No target	46
Percentage of those reaching goal	86%	43%	50%	

Broxtowe District Council Target and Measure	Full year - 2012/13 Target	Full year - 2012/13 Actual	Q1- 2013/14 Target	Q1- 2013/14 Actual
Number of referrals	No target	492	No target	123
Number of people who start the 12 programme	300	346	75	63
Number of starters that did not complete 12 weeks	No target	192	No target	29
Percentage of those reaching goal	86%		50%	

Details and Remedial Actions

These services are being reviewed to ensure equity of provision across the county.

Notice has been served on all the contracts, with new arrangements in place during 2014/15.

Quality and Patient Safety: no issues reported

16. Prevention of cancer & long term conditions

National Public Health Outcomes Framework		Health and Wellbeing Strategy Priorities
Outcome	Reference National Public Health (PH) Outcomes Framework	
Mortality rate from causes considered preventable Under 75 mortality rate from all cardiovascular disease Under 75 rate from cancer Under 75 rate from liver disease Under 75 mortality rate from respiratory diseases	PH 4.3 PH 4.4 PH 4.5 PH 4.6 PH 4.7	<ul style="list-style-type: none"> - To achieve the 11 quality standards in the long-term condition National Service Framework of 2005 by 2015 - To reduce early mortality and improve quality of life for individuals with Long Term Conditions
Category of contract value	Medium High	

Service Providers

There are several contracts. An updated position will be reported in quarter 2.

17. Reduce & prevent birth defects

National Public Health Outcomes Framework		Health and Wellbeing Strategy Priorities
Outcome	Reference National Public Health (PH) Outcomes Framework	
Low birth weight of term babies	PH 2.1	- Developing early intervention and prevention approaches
Child development at 2 years	PH 2.5	
Infant mortality	PH 4.1	
Category of contract value	Medium	

Service Providers

Leicester University:

- to maintain the East Midlands and South Yorkshire Congenital Anomalies register
- to publish the Trent Neonatal Survey.

Several local authorities contribute financially to the contract. Leicester University publish reports detailing data for Nottinghamshire babies. Public Health will be reviewing the reports to ascertain the value of them.

18. Seasonal Mortality

National Public Health Outcomes Framework		Health and Wellbeing Strategy Priorities
Outcome	Reference National Public Health (PH) Outcomes Framework	
Excess winter deaths	PH 4.15	- Excess winter deaths
Category of contract value	Medium	

Service Provider
Public Health has one contract. An updated position will be reported in quarter 2.

19. Social Exclusion

National Public Health Outcomes Framework		Health and Wellbeing Strategy Priorities
Outcome	Reference National Public Health (PH) Outcomes Framework	
Children in poverty Social Isolation	PH 1.1 PH 1.18	<ul style="list-style-type: none"> - To improve outcomes for children and their families - To reduce falls and injuries in the over 65's

Service Providers
Citizen's Advice Bureaus
Gedling Council for Voluntary Services

An updated position will be reported in quarter 2.

20. Tobacco Control

National Public Health Outcomes Framework		Health and Wellbeing Strategy Priorities
Outcome	Reference National Public Health (PH) Outcomes Framework	
Smoking prevalence in over 18 years	PH 2.14	- Prevention: behaviour change and social attitudes smoking and tobacco control
Category of contract value	High	

Service Providers
New Leaf – County Health Partnership
GPs – NHS Nottinghamshire PCT and NHS Bassetlaw
Community Pharmacists – NHS Nottinghamshire PCT and NHS Bassetlaw
Bassetlaw Stop Smoking Service

Target and Measure – Four-week smoking quitter* Service Provider	2013/14 Annual Target	2013/14 Q1 Target	2013/14 Q1 Actual
New Leaf – County Health Partnership	4953	1325	1384
GPs – Nottinghamshire	900	234	93
Community Pharmacists – Nottinghamshire	800	183	74
Bassetlaw	993	252	199

A quit date is the date on which a smoker plans to stop smoking altogether with support from a stop smoking adviser as part of an NHS-assisted quit attempt.

***A four-week smoking quitter** is a treated smoker whose quit status at four-weeks from their quit date (or within 25 to 42 days of the quit date) has been assessed (either face to face, by telephone, text or email). The four-week smoking quitter rate is used as a proxy measure for the prevalence rate.

**** Commissioned activity** this is activity that is commissioned in order to meeting the four week quitter target. Activity is usually over-commissioned to allow contingencies to ensure the end of year target is met.

Details and Remedial Actions

Key Issues affecting delivery:

- The key issues affecting delivery is the underperformance of the GP's and community pharmacies. There proposed commissioned activity was based on the previous year's activity. A large part of the activity had already been moved over to New Leaf to cover the deficit from primary care contractors.

Actions to address issues:

- Nottinghamshire County public health is looking to bench mark against other areas with similar demographics in respect of the % of the smoking population that we are targeting. This will help inform future commissioning options.
- Options are being considered by public health to move activity over to another provider existing within the current budget.

- Public Health tobacco team are working closely with the performance and contracts team to monitor Primary Care Performance on a monthly basis. Any issues will be reported at the monthly meeting.
- Processes have been set up for New Business to look at options for new GP's and community pharmacies to delivery smoking cessation support.

Quality and Patient Safety: no issues reported

21. Weight Management

National Public Health Outcomes Framework		Health and Wellbeing Strategy Priorities
Outcome	Reference National Public Health (PH) Outcomes Framework	
Diet Excess weight in adults Excess weight in 4-5 and 10-11 year olds	PH 2.11 PH 2.12 PH 2.6	<ul style="list-style-type: none"> - To achieve a downward trend in the level of excess weight averaged across all adults by 2020 - A sustained downward trend in the level of excess weight in children by 2020
Category of contract value	Medium high	

Service Provider
Bassetlaw Health Partnership
Retford Health

Service Provider - Bassetlaw Health Partnership
No data available. An updated position will be reported in quarter 2.

Service Provider - Retford Health, Chrysalis Indicator	Full year - 2011/12 Actual	2013/14 Q1 Actual
Number of patients that have completed a 12-week Adult Weight Management session	384	68
Number of patients who attended 6 or more sessions	273	66
Number of patients who achieved a target weight loss 6+ sessions	167	37
Lifestyle Benefits Reported: Improved diet 83 %; More active 70 %; Reduced BP 63 % Numerous ad hoc reports of patients lowering medication needs and reduced GP visits.		

Quality and Patient Safety: One complaint was received in this period relating to access to services. No other issues reported.

Currently Nottinghamshire County Council provides weight management services in Bassetlaw only. Inequity in obesity service provision is the driving force behind the current tender process.

Notice has been served on all the contracts, with new arrangements in place during 2014/15.

22. Workplace Health

Public Health provides a leadership function with a work programme in place. Currently there are no contracts.

Quality - Exception Report Q1 2013-14

Table showing complaints relating to health contracts and summary of Serious Incidents reported within Public Health Contracts and Freedom of Information requests. *Please note areas where zero reports have not been listed.*

	Complaints relating to Health Contracts			Summary of Serious Incidents (SI)			Freedom of Information Requests relating to Public health Functions and Health Contracts
	Number of new complaints in period	Number of complaints under investigation in period	Number of complaints concluded in period	Number of new SIs in period	Number of Sis under investigation in period	Number of SIs concluded in period	
Public Health Area							
Alcohol and Drug Misuse services	0 (Zero)	0 (Zero)	0 (Zero)	2 (Two)	2 (Two)	2 (Two)	0 (Zero)
Interventions to tackle obesity such as community lifestyle and weight management services	1 (One)	1 (One)	1 (One)	0 (Zero)	0 (Zero)	0 (Zero)	0 (Zero)