

## **Children and Young People's Committee**

**Monday, 19 September 2016 at 10:30**

**County Hall, County Hall, West Bridgford, Nottingham, NG2 7QP**

---

### **AGENDA**

- |    |  |         |
|----|--|---------|
| 1  | Minutes of the last meeting held on 18 July 2016   | 3 - 6   |
| 2  | Apologies for Absence  |         |
| 3  | Declarations of Interests by Members and Officers:- (see note below)<br>(a) Disclosable Pecuniary Interests<br>(b) Private Interests (pecuniary and non-pecuniary) |         |
| 4  | Performance reporting (Quarter 1 2016-17) - services for children and young people   | 7 - 14  |
| 5  | Joint Local Area Special Educational Needs and Disability (SEND) Inspection in Nottinghamshire   | 15 - 28 |
| 6  | Review of the Short Breaks offer   | 29 - 34 |
| 7  | Changes to the staffing establishment in the Early Help and Youth Justice Services   | 35 - 50 |
| 8  | Newark Free School   | 51 - 56 |
| 9  | Local Authority governor appointments and Authority governor reappointment to school governing bodies during the period 1 June to 31 July 2016                     | 57 - 60 |
| 10 | Work Programme   | 61 - 66 |

## **Notes**

- (1) Councillors are advised to contact their Research Officer for details of any Group Meetings which are planned for this meeting.
- (2) Members of the public wishing to inspect "Background Papers" referred to in the reports on the agenda or Schedule 12A of the Local Government Act should contact:-

Customer Services Centre 0300 500 80 80

- (3) Persons making a declaration of interest should have regard to the Code of Conduct and the Council's Procedure Rules. Those declaring must indicate the nature of their interest and the reasons for the declaration.

Councillors or Officers requiring clarification on whether to make a declaration of interest are invited to contact Alison Fawley (Tel. 0115 993 2534) or a colleague in Democratic Services prior to the meeting.

- (4) Councillors are reminded that Committee and Sub-Committee papers, with the exception of those which contain Exempt or Confidential Information, may be recycled.
- (5) This agenda and its associated reports are available to view online via an online calendar - <http://www.nottinghamshire.gov.uk/dms/Meetings.aspx>

Meeting CHILDREN & YOUNG PEOPLE'S COMMITTEE

Date 18 July 2016 (commencing at 10.30am)

**Membership**

Persons absent are marked with an 'A'

**COUNCILLORS**

John Peck JP (Chairman)  
Kate Foale (Vice-Chairman)  
Liz Plant (Vice-Chairman)

A	John Allin	Keith Longdon
	Maureen Dobson	Philip Owen
	Boyd Elliott	Sue Saddington
	Alice Grice	Andy Sissons
	Ex-officio (non-voting)	
A	Alan Rhodes	

**CO-OPTED MEMBERS (NON-VOTING)**

	Vacancy
A	Mr David Richards JP

**OFFICERS IN ATTENDANCE**

Marion Clay	Children, Families and Cultural Services
Dawn Godfrey	Children, Families and Cultural Services
Derek Higton	Children, Families and Cultural Services
Colin Pettigrew	Children, Families and Cultural Services
Matt Rooney	Children, Families and Cultural Services
Alison Fawley	Resources
Geoff Russell	Resources

**MINUTES OF THE LAST MEETING**

The minutes of the meeting held on 20 June 2016, having been circulated to all Members, were taken as read and were confirmed subject to the following amendment and were signed by the Chair:

- 2016/042 – Members requested that the Ofsted Regional Director be invited to a future meeting.

## **APOLOGIES FOR ABSENCE**

Apologies for absence were received from Councillor Maureen Dobson and Mr D Richards.

## **DECLARATIONS OF INTEREST**

None.

## **NOTTINGHAMSHIRE REVIEW OF ARRANGEMENTS FOR SPECIAL EDUCATIONAL NEEDS AND DISABILITY – INTERIM REPORT**

The Chair introduced the report and lead officers responded to questions and comments from Members.

### **RESOLVED 2016/043**

That the progress to date of the County Council's review of Special Education Needs and Disability (SEND), focusing on the Council's special schools and other specialist education provision made by the Council for children and young people with a SEND, be noted.

## **NOTTINGHAMSHIRE CHILDCARE SUFFICIENCY ASSESSMENT 2016**

Irene Kakoullis introduced the report and responded to questions and comments from Members.

### **RESOLVED 2016/044**

- 1) That the findings of the 2016 Childcare Sufficiency Assessment be noted.
- 2) That the response to the findings of the 2016 Nottinghamshire Childcare Sufficiency Assessment be approved.

## **CHANGES TO STAFFING ESTABLISHMENT IN THE FAMILY SERVICE**

The Chair introduced the report and lead officers responded to questions and comments from Members.

### **RESOLVED 2016/045**

That the changes to the staffing establishment of the Family Service, as detailed in the report, be approved.

## **CONSULTATION ON POSSIBLE AMALGAMATION OF MEADOW LANE COMMUNITY INFANT AND COLLEGE HOUSE COMMUNITY JUNIOR SCHOOLS**

The Chair introduced the report and lead officers responded to questions and comments from Members.

#### **RESOLVED 2016/046**

That agreement be given to forward a request for approval to the Secretary of State, prior the then publishing a statutory notice as required under the provisions of Sections 10 and 15 of the Education and Inspections Act (EIA) 2006, for proposal to amalgamate Meadow Lane Infant School and College House Junior School to form a single 5-11 years community primary school, in existing accommodation, from September 2017 at the earliest.

#### **ROTA VISITS TO CHILDREN'S HOMES: SPRING 2016**

The Chair introduced the report and lead officers responded to questions and comments from Members.

#### **RESOLVED 2016/047**

That the outcome of the six-monthly rota visits to Nottinghamshire County Council's children's homes that took place in Spring 2016 be noted.

#### **MEMBERS' VISIT TO OUTDOOR AND ENVIRONMENTAL EDUCATION RESIDENTIAL CENTRES**

#### **RESOLVED 2016/048**

That approval be given for a visit by Members to the two Outdoor and Environmental Education residential centres on a date to be decided in September or October 2016.

#### **WORK PROGRAMME**

#### **RESOLVED 2016/049**

That the Committee's work programme be noted subject to a request for an interim report on the likely impact of the proposed new free school in Newark be scheduled as early as possible.

The meeting closed at 11.25 am.

CHAIRMAN



**19 September 2016****Agenda Item: 04****REPORT OF THE CORPORATE DIRECTOR, RESOURCES****PERFORMANCE REPORTING (QUARTER 1 2016/17) - SERVICES FOR  
CHILDREN AND YOUNG PEOPLE****Purpose of the Report**

1. The purpose of this report is to provide the Committee with a summary of the performance of the Council's services for children and young people between 1 April and 30 June 2016.

**Information and Advice****Performance Reporting for 2016/17**

2. This report forms the first quarterly report of 2016/17, reporting on quarterly performance for the 2016/17 financial year.
3. At its meeting on 16 July 2012, the Committee agreed to receive a report each quarter, reviewing performance across the full range of services provided to children and young people. Quarterly reports would be in addition to other reports that might be presented to the Committee from time to time, providing detailed performance-related information about specific initiatives, projects or services. As agreed at this meeting, quantitative performance reporting to the Committee is measured via key performance indicators (KPIs), which cover the full range of services to children and young people.
4. Performance data is set out in the appendices. **Appendix 1** shows those measures which have received updates since the previous quarter. **Appendix 2** shows those measures which have not changed.
5. There has been one change to the indicator set this quarter with the replacement of 'Initial assessments for Children's Social Care carried out within timescales' and 'Core assessments for Children's Social Care carried out within timescales' with 'Child and Family Assessments completed with statutory timescales'.
6. For each KPI, current performance is compared to the national average for England, and that of the Council's children's services statistical neighbours, where this data is available. Since October 2014, Nottinghamshire's statistical neighbours have been:
  1. Derbyshire
  2. Staffordshire
  3. Lancashire

4. Worcestershire
5. Cumbria
6. Northamptonshire
7. Essex
8. Kent
9. Cheshire West and Chester
10. Warwickshire

7. In addition, for each KPI, the table indicates whether performance has improved (+), declined (-), or remained the same (=) over the current reporting period.

**Protecting the most vulnerable and ensuring that children in our care experience high quality and stable support (provisional figures)**

8. In the first quarter of reporting on the new single child and family assessments completed within timescales (45 days), it is positive to note that performance is significantly better than England and statistical neighbours' averages.
9. There has been a sharp drop in the percentage of assessments leading to on-going children's social care involvement, from 55% in the final quarter of 2015/16 to 26% in the first quarter of 2016/17. This is due to the change in recording as a result of the move to the single child and family assessment. Previously this measure captured initial assessments which progressed to a core assessment even when the core assessment resulted in no further action. This measure will be reviewed on an ongoing basis to ensure the threshold remains appropriate.
10. Re-referral rate in quarter one is only 0.50% points above the target and will be closely monitored. Historically evidence shows that when re-referral data is cleansed it reduces significantly; the ACTUAL re-referral rate for 2015-16 was 14%.
11. At the end of June 2016, there were a total of 737 children subject to a child protection plan. This is an increase from the total of 703 at the end of March 2016. The number of initial child protection conferences has steadily increased over the quarter. The decision to progress cases to an initial conference has remained with the operational service managers and indeed they are consistently recording their agreement and oversight of the cases progressing to an initial conference.
12. At the end of June 2016 the number of children subject to a child protection plan was at the rate of 45.3 per 10,000 children. This figure is higher than both the England and statistical neighbours' averages at the end of 2014/15 which was 42.9 and 38.3 respectively. Although the number of children subject to a child protection plan is high, it is worth noting that it remains significantly lower than the 859 figure which was reached at the end of August 2015.
13. During April to June 2016, a total number of 212 children had their child protection plans ended and only 2 of these (0.9%) had been subject to a child protection plan for more than 2 years. This figure has consistently remained within target, and is also lower than both the England and statistical neighbours' averages as at the end of 2014/15 which was 3.7% and 3.8% respectively. Child Protection Coordinators continue to monitor plans over 15 months and will initiate alerts at the 15 month stage if it is felt that there has been a lack of progress with the plan. These alerts are sent directly to operational service managers requesting their oversight of the cases.



14. During April to June 2016, a total number of 244 children became the subject of a child protection plan and of these, 71 (29.1%) had been subject to a plan for a second or subsequent time. This figure remains higher than the target and is an increase from the previous quarter. It is noted that the figure in April was distorted by a number of large sibling groups. The independent chair service is continuing to monitor this area.
15. The independent chair service specifically audit those repeat plans which have started within 2 years of the previous plan ending. Operational service managers are also required to record their management oversight on these cases. Of the total 71 repeat plans this quarter, 31 started within 2 years of the previous plan ending. The large majority of these repeat plans were for the same reason, and domestic violence continues to feature significantly within this. Substance misuse has also been a common theme this quarter. Operational service managers' oversight is key in these cases so if necessary swift action can be identified and taken.
16. During April to June 2016 a total number of 568 children had their plans reviewed at a child protection conference, with a total of 301 conferences being held. During this quarter, two review child protection conferences were held out of timescale. The percentage of cases reviewed in timescale in the rolling year is 98% which meets the required target. There were some data errors which have since been rectified and this will further improve the percentage in timescale, with only 4 review conferences being held out of timescale over the past 12 months.
17. For those adopted children, positive progress has been made with the average number of days between their admission and placement decreasing again. The Council continues to place children via Fostering for Adoption and this enables us to place children in a timely manner. Good processes in relation to tracking of children's plans and home finding enables us to identify children with an adoption plan and match appropriately and efficiently.
18. The average days between a local authority court authority to place and a decision to match has also fallen again this quarter, showing good progress against this measure. The Council continues to be ambitious for all children with an adoption plan and are successful in placing older children, large sibling groups and children with disabilities. Placing such children does take longer. The Council have had children whose placement has disrupted pre order and have subsequently placed with a second family and again this takes us longer - for example 434 days for one child who is now settled and stable in his second adoptive home.
19. It is positive to note that the percentage of children waiting less than 14 months between entering care and moving in with their adoptive family has increased to 73% at the end of June 2016. The Council has sound processes to ensure that it knows its cohort of children and recruit adopters based on need and this in turn ensures swift and appropriate matching. The Council have made good use of the Department for Education (DfE) interagency fee for harder to place children.
20. As at the end of June 2016, a total of 798 children were looked after by Nottinghamshire which is a rate of 49.1 per 10,000 children. The volume of looked after children has been steadily declining over the last six months and is now at its lowest level since February 2012. The rate per 10,000 remains lower than the England and statistical neighbours' averages, which were 60 and 57.8 respectively. There was a significant percentage of young people reaching the

age of 18 and progressing onto independent living, and children returning home to live with parents over the quarter.

21. The proportion of looked after children who have had at least three placements has fallen slightly since last quarter, showing good progress. Fewer babies (under 1) have had three or more placements and also fewer 17 year olds have too. There has been a fall in the number of 16 and 17 year olds entering independent living (from 16 to 7). Three 17 year olds have been taken into custody in a young offenders' institution or prison this quarter, when there were none in quarter 4. Fewer children were placed for adoption with a placement order this quarter.
22. The percentage of looked after children who have remained in the same placement for at least two years has increased so that now over three quarters of children are residing in the same placement. This is well above the national and statistical neighbours' averages.
23. The percentage of care leavers in suitable accommodation has seen another increase this quarter to 81.8% which is a positive increase and performance is now above both the statistical neighbours' average and the national average of 80.7%.

#### **Educational standards and closing the attainment gap**

24. The number of primary schools in an Ofsted category (as at the end of June 2016) shows a fall since the previous quarter. No Nottinghamshire primary schools are currently judged inadequate (reduction from one last quarter). Wainwright Primary (Mansfield district; a sponsored academy which converted September 2012 under the leadership of School Partnership Trust) which was inadequate at the end of the previous quarter is now judged to require improvement. The sponsorship of the academy is set to transfer to Diverse Academy Trust on 1<sup>st</sup> September 2016.
25. The number of secondary academies in an Ofsted category has increased to two (from one in the previous quarter). Queen Elizabeth (Mansfield district; a sponsored academy which converted January 2012 under the leadership of School Partnership Trust) remains inadequate from the previous quarter. Manor (Mansfield district; a convertor academy which converted August 2011) previously judged as requiring improvement is now inadequate. There are currently no Local Authority maintained secondary schools judged to be either inadequate or requiring improvement.
26. The percentage of young people aged 16-17 who are in Education, Employment or Training (EET) has increased in quarter 1 from the same quarter the previous year. 96.0% of young people are now in EET, an increase of 2.9 percentage points. Improvements have also been seen in the proportion of young people whose activity is unknown. Quarter 1 data shows this has fallen to 2.8% (from 5.7% this quarter last year). Those Not in Education, Employment or Training (NEET) has witnessed a slight increase to 1.6% (from 1.2% this quarter last year).
27. The number of two year olds accessing their free entitlement has witnessed an increase in the summer 2016 term. 70.7% of eligible two year olds are attending providers, an increase of 6.9 percentage points (from 63.8%) from the same term last year. Analysis by district shows all eligible Rushcliffe district children are accessing their entitlement whereas the equivalent figure for Ashfield district is 61.8% (an increase of 6.6 percentage points from 55.2% reported this term last year).

28. Latest data on permanent exclusions for the 2014/15 academic year from all schools (maintained, academy and special schools) shows Nottinghamshire continues to remain below both national and statistical neighbour averages. 0.03% of the overall Nottinghamshire school population were excluded in 2014/15, a fall from 0.04% reported in 2013/14. The national figure for the same period is 0.07% which represents an increase from 0.06% reported in 2014/15. A similar increase was witnessed amongst statistical neighbours to 0.08% (from 0.07% reported the previous year). On this measure Nottinghamshire is now placed joint first with Essex LA. Comparisons for the Council's closest statistical neighbour, Derbyshire was 0.09% (a fall from 0.10% the previous year).

### **Youth Offending & Early Help Support**

29. Full year figures for 2015/16 show that there were 209 actual first time entrants (FTEs) or 295 per 100,000 10-17 population. Whilst this is slightly higher than last year's performance of 193 actual or 269 per 100,000 (where performance was particularly strong), it is lower than previous years and the second lowest FTE rate to date.

30. Children's Centre registrations performance remains high with 99.5% of all children under 5 who live in low income areas registered with a Children's Centre at the end of quarter 1. The number of these who had been seen at a Children's Centre remains comparable to the same quarter last year. At the end of quarter 1, 35.3% of children living in low income areas were seen in Children's Centres.

### **Education, Health and Care (EHC) Plans**

31. EHC plans bring together a child's education, health and social care needs into a single, legal document. The document sets out what extra support they will get to meet those needs. From 1 September 2014 EHC Plans started to replace statements of special educational needs as part of a major transformation of the way services for children and young people (0-25 years) with special educational needs and/or disabilities are delivered. Nottinghamshire was a pathfinder for this area of work and implemented the EHC Plan ahead of it becoming a National requirement. There was a total of 70 EHC Plans finalised during quarter 4 2015/16, compared with 46 in quarter 3 2015/16.

### **Other Options Considered**

32. The process for presenting performance information set out in this report is in line with corporate guidance, which has itself been established following an appropriate analysis of alternative options.

### **Reason/s for Recommendation/s**

33. The recommendation for quarterly reporting to Committee, and the KPIs that will form the basis of the report, is in line with the established processes of reporting and publishing performance information across all of the services within the Children, Families and Cultural Services department.

## **Statutory and Policy Implications**

34. This report has been compiled after consideration of implications in respect of crime and disorder, finance, human resources, human rights, the NHS Constitution (public health services), the public sector equality duty, safeguarding of children and adults at risk, service users, sustainability and the environment and ways of working and where such implications are material they are described below. Appropriate consultation has been undertaken and advice sought on these issues as required.

## **RECOMMENDATION/S**

- 1) That the Committee notes the performance of the Council's services for children and young people during the period 1 April – 30 June 2016.

**Jayne Francis-Ward**  
**Corporate Director for Resources Department**

**For any enquiries about this report please contact:**

Matthew Garrard  
Team Manager, Performance, Intelligence and Policy  
T: 0115 9772892  
E: [matthew.garrard@nottsc.gov.uk](mailto:matthew.garrard@nottsc.gov.uk)

## **Constitutional Comments**

35. As this report is for noting only, no Constitutional Comments are required.

## **Financial Comments (TMR 17/08/16)**

36. As this report is for noting only, no Financial Comments are required.

## **Background Papers and Published Documents**

Except for previously published documents, which will be available elsewhere, the documents listed here will be available for inspection in accordance with Section 100D of the Local Government Act 1972.

Performance reporting (Quarter 4 2015/16) – services for children and young people – report to Children and Young People's Committee on 23 May 2016.

## **Electoral Division(s) and Member(s) Affected**

All

C0871

Appendix 1 - Indicators updated from previous report

Children and Young People’s Committee: Quarter 1 Performance for 2016/17									
For Nottinghamshire, the performance data available at the end of quarter 1 2016/17 is reported. The most recent data for national average and children’s services statistical neighbours is reported, where available. Please note, comparisons may be indicative only, as the reporting periods are not necessarily aligned. Where Nottinghamshire performance meets or exceeds the latest national performance information, this is highlighted by the emboldened boxes. Key: (p) = provisional data; (+) = better than previous value; (-) = worse than previous value; (=) = same as previous value; (n/a) = not comparable to previous value									

Update	Key Performance Indicator	Nottinghamshire						Comparator Data		
		Current Value		Best to be	Current Reporting Period		Previous Value	Previous Annual Performance	National Average	Statistical Neighbours
Indicators updated from previous report	Child and Family assessments for Children’s Social Care carried out within NCC timescales	97.0%	(n/a)	High	2016/17 Q1		N/A	N/A	81.5% (2014/15)	79.92% (2014/15)
	Percentage of assessments leading to an on-going children’s social care involvement	26.0%	(-)	High	2016/17 Q1		54.8%	54.8% (2015/16)	63.2 (2014/15)	50.3 (2014/15)
	Percentage of child protection cases reviewed within timescale	98.0%	(+)	High	2016/17 Q1		96.6%	96.6% (2015/16)	94.0% (2014/15)	95.1% (2014/15)
	Re-referrals to Children’s Social Care	25.5%	(+)	Low	2016/17 Q1		25.6%	25.6% (2015/16)	24.0% (2014/15)	25.1% (2014/15)
	Children subject to a Child Protection Plan – Rate per 10,000	45.3	N/A	N/A	2016/17 Q1		43.2	43.2 (2015/16)	42.9 (2014/15)	38.3 (2014/15)
	Children who are subject to a child protection plan for 2 years or more	0.9%	(+)	Low	2016/17 Q1		3.6%	3.6% (2015/16)	3.7% (2014/15)	3.8% (2014/15)
	Children becoming the subject of a child protection plan on more than one occasion	29.1%	(-)	Low	2016/17 Q1		13.5%	13.5% (2015/16)	16.6% (2014/15)	15.2% (2014/15)
	Average time between a child entering care and moving in with its adoptive family, for those adopted children (days)	421	(+)	Low	2016/17 Q1		554	585 days (2013-16)	593 days (2013-15)	594 days (2013-15)
	Average time between a LA receiving court authority to place a child and deciding on a match to an adoptive family (days)	190	(+)	Low	2016/17 Q1		278	296 days (2013-16)	223 days (2013-15)	231 days (2013-15)
	Looked after children with 3 or more placements in any one year	9.4%	(+)	Low	2016/17 Q1		10.4%	10.4% (2015/16)	10.0% (2014/15)	10.2% (2014/15)
	Percentage of looked after children remaining in long-term placements	76.4%	(+)	High	2016/17 Q1		73.8%	73.8% (2015/16)	68% (2014/15)	68% (2014/15)
	Percentage of care leavers in suitable accommodation	81.8%	(+)	High	2016/17 Q1		79.5%	79.5% (2015/16)	80.7% (2014/15)	75.3% (2014/15)
	Number of primary schools in an Ofsted category (Inadequate)	0	(+)	Low	2016/17 Q1		1	n/a	–	–
	Number of secondary schools in an Ofsted category (Inadequate)	2	(-)	Low	2016/17 Q1		1	n/a	–	–
	Rate of permanent exclusions from school	0.03%	(+)	Low	2014/15 academic		0.04%	0.04% (2013/14)	0.07% (2014/15)	0.08% (2014/15)
	Participation in education, employment and training (EET) aged 16-17	96.0%	(+)	High	2016/17 Q1		93.1%	94.0% (2015/16 Q4)		–
	Percentage not in education, employment or training (NEET) aged 16-17	1.6%	(-)	Low	2016/17 Q1		1.2%	1.7% (2015/16 Q4)		–
	Percentage whose destination is not known aged 16-17	2.8%	(+)	Low	2016/17 Q1		5.7%	4.3% (2015-16 Q4)		–
	Percentage of children aged 0-4 living in low income areas registered with children's centres (snapshot)	99.5%	(-)	High	2016/17 Q1		100.0%	100% (2015/16 Q4)		–
	Percentage of children aged 0-4 living in low income areas seen at children’s centres (cumulative)	35.3%	(+)	High	2016/17 Q1		35.2%	76.6% (2014/15 Q4)		–
	Percentage of two year olds taking up their free entitlement	70.7%	(+)	High	Summer Term 2016		63.8%	66.0% (Spring 2016)		–
	Numbers of individual children and young people engaged in positive activities delivered by the Young People's Service (cumulative)	6103	(-)	High	2016/17 Q1		24406	24406		–
	Numbers of children and young people accessing Outdoor and Environmental Education (cumulative)	8703	(-)	High	2016/17 Q1		33871	33871		–



Update	Key Performance Indicator	Nottinghamshire						Comparator Data	
		Current Value		Best to be	Current Reporting Period		Previous Value	Previous Annual Performance	National Average
	First time entrants to the Youth Justice System aged 10-17 (per 100,000) (cumulative)	295	(-)	Low	2015/16 Q4		247	269	—
	Numbers exiting substance misuse treatment in a planned manner	96%	(-)	High	2015/16 Q4		98%	85.00%	79% (2014/15) —
	Breastfeeding prevalence at 6-8 weeks, incl. mixed feeding methods (Nottinghamshire NHS)	37.0%	(-)	High	2015/16 Q4		40.6%	37.0%	43.8% (2014/15) 42.3% (2012/13)
	Breastfeeding prevalence at 6-8 weeks, incl. mixed feeding methods (Bassetlaw NHS)	33.0%	(-)	High	2015/16 Q4		36.0%	33.0%	43.8% (2014/15) 42.3% (2012/13)
	The number of new Education, Health and Care Plans finalised (a statutory requirement from 1 September 2014)	85	N/A	N/A	2016/17 Q1		70	70	—

### Appendix 2 - Indicators that remain unchanged from previous report

	Children and Young People’s Committee: Quarter 4 Performance for 2015/16								
For Nottinghamshire, the performance data available at the end of quarter 4 2015/16 is reported. The most recent data for national average and children’s services statistical neighbours is reported, where available. Please note, comparisons may be indicative only, as the reporting periods are not necessarily aligned. Where Nottinghamshire performance meets or exceeds the latest national performance information, this is highlighted by the emboldened boxes. Key: (p) = provisional data; (+) = better than previous value; (-) = worse than previous value; (=) = same as previous value; (n/a) = not comparable to previous value									
Update	Key Performance Indicator	Nottinghamshire					Comparator Data		
		Current Value	Best to be	Current Reporting Period		Previous Value	Previous Annual Performance	National Average	Statistical Neighbours
Indicators that remain unchanged from the previous report	Early years foundation stage attainment (Reaching a 'Good Level of Development' - at least expected in all early learning goals in all prime areas and in the specific areas of literacy and mathematics)	65.3%	(+)	High	2014/15 academic	61.7%	61.7%	66.3% (2014/15)	67.6% (2014/15)
	Pupils achieving Level 4 in reading, writing & mathematics at age 11	80.8%	(+)	High	2014/15 academic	78.8%	78.8%	80.0% (2014/15)	80.1% (2014/15)
	Achievement of 5 or more A*-C grades at GCSE or equivalent (including English & maths)	57.0%	(-)	High	2014/15 academic	58.0%	58.0%	57.3% (2014/15)	57.6% (2014/15)
	Percentage of young people qualified to Level 3 (2 passes at A-Level or equivalent) by age 19	50.4%	(-)	High	2014/15 academic	51.0%	51.0% (2013/14)	57.4% (2014/15)	56.8% (2014/15)
	Percentage of A level entries at A*-E grades	98.4%	(=)	High	2014/15 academic	98.4%	98.4%	98.8% (2014/15)	–
	Percentage of A level entries at A*-B grades	46.5%	(-)	High	2014/15 academic	48.5%	48.5%	53.4% (2014/15)	–
	Primary schools judged by Ofsted as having good or outstanding standards of behaviour	93.4%	(+)	High	As at Sept 2015	92.7%	n/a	94.3% (Sept 2015)	94.1% (Sept 2015)
	Secondary schools judged by Ofsted as having good/outstanding standards of behaviour	79.1%	(-)	High	As at Sept 2015	83.3%	n/a	85.1% (Sept 2015)	84.2% (Sept 2015)
	Attainment gap for a good level of development in EYFSP between pupils taking free school meals and the rest	27.6%	(-)	Low	2014/15 academic	27.1%	27.1%	18.90%	–
	Attainment gap at age 11 between pupils taking free school meals and the rest ( <i>FSM during past six years</i> )	16.8%	(+)	Low	2014/15 academic	17.4%	17.4%	14.0% (2014/15)	–
	Attainment gap at age 16 between pupils taking free school meals and the rest ( <i>FSM during past six years</i> )	30.2%	(-)	Low	2014/15 academic	28.9%	28.9%	27.0% (2014/15)	–
	Percentage of young people who have not attained a Level 2 qualification in English & maths at age 16 who go on to attain Level 2 or higher in both by the end of the academic year in which they turn 19	17.0%	(+)	High	2014/15 academic	16.3%	16.3% (2013/14)	22.3% (2014/15)	21.5% (2014/15)
	Percentage of overall absence in primary, secondary and special schools	4.5%	(=)	Low	2014/15 academic	4.5%	4.5%	4.6% (2014/15)	4.5% (2014/15)

**19 September 2016****Agenda Item: 05****REPORT OF THE SERVICE DIRECTORS OF CHILDREN'S SOCIAL CARE  
AND YOUTH, FAMILIES & CULTURE****JOINT LOCAL AREA SPECIAL EDUCATIONAL NEEDS AND DISABILITY  
(SEND) INSPECTION IN NOTTINGHAMSHIRE****Purpose of the Report**

1. The purpose of this report is to:
  - inform Committee of the outcome of the joint Ofsted/Care Quality Commission (CQC) inspection of Nottinghamshire's effectiveness in implementing the Special Educational Needs and Disability (SEND) reforms as set out in the Children and Families Act 2014,
  - seek Committee approval to establish a Nottinghamshire SEND Accountability Board to oversee the development, monitoring and delivery of a multi-agency Local Area SEND Action Plan. The Action Plan will consolidate the work that has already begun to address the identified areas for improvement and will ensure that a local area perspective on improving outcomes for children and young people with disabilities in Nottinghamshire is maintained.

**Information and Advice**

2. In April 2015, the Department for Education (DFE) announced that Ofsted and the CQC would be undertaking joint inspections of the local area's effectiveness in implementing the SEND reforms, as set out in the Children and Families Act 2014. Inspections were due to commence in May 2016 and would assess how effectively the SEND reforms had been implemented since September 2014. The inspection would include all the organisations engaged in providing support and provision for children and young people with SEND within the local area. Partners included in the local area inspection are health, education and social care colleagues, voluntary sector, parents and carers and providers of services. All 152 local authority areas were due to be inspected on a 5 year cycle, equating to an average of 30 inspections per year. The Framework for the inspection was published in April 2016.
3. Nottinghamshire was inspected over 5 days, commencing 20 June 2016. It was the third area in the country to be reviewed. Being inspected so early after the introduction of a new inspection framework is always a disadvantage. Had Nottinghamshire been inspected in five years' time, it would inevitably have been further along the SEND journey and would have had the advantage of learning from those inspections that had preceded. As it was, it

was reasonable to expect that the inspectors would identify areas of development for Nottinghamshire.

4. The inspection was led by one of Her Majesty's Inspectors from Ofsted, with a team of inspectors including an Ofsted Inspector and children's services inspectors from the CQC. During the week of the inspection, the inspection team sought the views and opinions of children and young people, their parents and carers. This was undertaken during visits to schools, settings and colleges and through meetings with individuals and groups. A webinar was also staged by the inspectors to gather feedback from parents from across the County which attracted in excess of 100 participants.
5. The inspectors also visited schools and spoke with staff from across education, social care and health to gauge the progress which they felt was being made in the implementation of the reforms and the impact that this was having on the improvement of outcomes for children and young people. A small number of Education, Health and Care Plans were also audited.
6. Under the framework, which describes the arrangements for the inspection, each local area receives a joint letter from Ofsted and the CQC following the inspection. This letter details the inspectors' key findings and outcomes and takes a narrative form, rather than a specific grading. Nottinghamshire's Joint local Area Send Inspection letter is attached as **Appendix 1**.
7. On the whole, the outcome of the Nottinghamshire inspection was positive and the inspection letter highlights a number of positive findings drawn from across education, health and social care, in terms of the support that is offered to children and young people with SEND and their families. In particular the inspection team recognised:
  - the high level of commitment that they found amongst all stakeholders towards the implementation of the reforms and the tenacity of local area leaders in piloting new ways of working to improve outcomes
  - the strength of the Nottinghamshire Families of Schools structure and the support provided to enable schools and settings to access advice, guidance and funding to quickly meet the identified needs of children and young people. This structure also supports the transition of primary pupils into the secondary phase of their education
  - the effectiveness of health visitors and school nurses in the early identification of children's needs
  - the value of the "concerning behaviours pathway" as a tool for addressing specific communication, social, emotional and mental health needs
  - the process for assessing children and young people for an Education, Health and Care Plan was found to be rigorous
  - the arrangements for looked after children, which enables them to access support which is beneficial to them
  - the innovative use of short breaks funding to identify and meet the needs of children, young people and their families.
8. In terms of development, inspectors identified a number of areas including:
  - Education, Health and Care Plans should contain more information regarding the individual's needs, as there was too much focus on education and not enough on targets for progress or improvement



- more work is needed to prepare young people and their families for adulthood
  - stronger strategies were required to prevent poor school attendance and mitigate the risk of exclusion amongst children with SEND.
9. The inspectors recognised that Nottinghamshire's self-evaluation of its progress was broadly accurate and that work had already begun to address some of the areas identified for development. For example, it was recognised that the new Integrated Children's Disability Service had already prioritised work to improve the quality and consistency of Education, Health and Care Plans. Similarly they noted that a transition protocol had been produced to address concerns and anxieties about the move between children's and adult services, but that further work is needed before this is fully implemented.
  10. Of particular note is the commitment the inspectors found across all stakeholders in Nottinghamshire to the implementation of the reforms. This commitment should now be harnessed to ensure that the inspection process is used as a catalyst to drive through the developments needed. With this in mind, a multi-agency SEND Action Plan is being established to consolidate the work of the various SEND improvement streams already progressing across the local area, including the 2013/16 SEND Review and the work of the Improving Outcomes for Children and Young People with Disabilities Project. This approach will ensure that a coordinated local area perspective is maintained to drive forward improved outcomes for children and young people in Nottinghamshire.
  11. It is proposed that a SEND Accountability Board be established to oversee the development, monitoring and implementation of the Plan and it is recommended that the Board be chaired by the Chair of the Children and Young People's Committee to demonstrate the local area's continued commitment to children and young people with SEND.
  12. It is important that the governance of the Plan reflects its multi-agency nature, as such updates will be provided to the Children and Young People's Committee, the Children's Trust, Health and Wellbeing Board and the Nottinghamshire Safeguarding Board, as appropriate.
  13. It is also important that the Board reflects and embraces the values of the SEND reforms in terms of co-production. Co-production is when an individual influences the support and services received, or when groups of people get together to influence the way that services are designed, commissioned and delivered. As such, the development, monitoring and delivery of the Action Plan will be achieved in partnership with children and young people with SEND and their families.

### **Other Options Considered**

14. As this was an Ofsted/CQC inspection, no other options have been considered

### **Reason/s for Recommendation/s**

15. To ensure that the local area maintains a co-ordinated, multi-agency approach to the implementation of the SEND reforms, as set out in the Children and Families Act 2014 and continues to secure improved outcomes for children and young people with SEN and/or Disabilities.

## **Statutory and Policy Implications**

16. This report has been compiled after consideration of implications in respect of crime and disorder, finance, human resources, human rights, the NHS Constitution (public health services), the public sector equality duty, safeguarding of children and adults at risk, service users, sustainability and the environment and ways of working and where such implications are material they are described below. Appropriate consultation has been undertaken and advice sought on these issues as required.

## **Human Resources Implications**

17. The Board will be supported by the temporary post of SEND Inspection Project Manager as agreed by the Children and Young People's Committee on 23 May 2016.

## **Financial Implications**

18. The cost of the temporary post of SEND Inspection Project Manager will be met from the SEND Reforms 'New Burdens' Grant.

## **Implications for Service Users**

19. Successful delivery of the SEND Action Plan will support children and young people with SEND in Nottinghamshire to achieve the best possible educational and other outcomes, such as being able to live independently, secure meaningful employment and be well prepared for their adult lives.

## **RECOMMENDATION/S**

That the Committee:

- 1) notes the positive outcome of the recent inspection of Nottinghamshire's effectiveness in implementing the Special Educational Needs and Disability (SEND) reforms as set out in the Children and Families Act 2014
- 2) approves the establishment of a SEND Accountability Board, chaired by the Chair of the Children and Young Peoples Committee to oversee the development, monitoring and implementation of a multi-agency SEND Action Plan.

**Derek Higton**  
**Service Director, Youth, Families and Culture**

**Steve Edwards**  
**Service Director, Children's Social Care**

**For any enquiries about this report please contact:**

Jill Norman  
Temporary Group Manager, Integrated Children's Disability Service  
T: 0115 9932566  
E: Jill.norman@nottsc.gov.uk

**Constitutional Comments (SLB 01/09/16)**

20. Children and Young People's Committee is the appropriate body to consider the content of this report.

**Financial Comments (TMR 29/08/16)**

21. The financial implications are set out in paragraph 18.

**Background Papers and Published Documents**

Except for previously published documents, which will be available elsewhere, the documents listed here will be available for inspection in accordance with Section 100D of the Local Government Act 1972.

Special Educational Needs and Disability Reform Grant 2016/17 - report to Children and Young People's Committee on 23 May 2016

**Electoral Division(s) and Member(s) Affected**

All.

C0875



Ofsted  
Agora  
6 Cumberland Place  
Nottingham  
NG1 6HJ

T 0300 123 1231  
**Textphone** 0161 618 8524  
[enquiries@ofsted.gov.uk](mailto:enquiries@ofsted.gov.uk)  
[www.gov.uk/ofsted](http://www.gov.uk/ofsted)  
[Lasend.support@ofsted.gov.uk](mailto:Lasend.support@ofsted.gov.uk)



CareQuality  
Commission



3 August 2016

Mr Colin Pettigrew  
Corporate Director, Children, Families and Cultural Services  
Nottinghamshire County Council  
County Hall  
West Bridgeford  
Nottingham  
NG2 7QP

Ms Nicki Hodson, Designated Clinical Officer, Nottinghamshire County Clinical  
Commissioning Groups  
Ms Sam Walters, Chief Officer, Nottingham North and East Clinical Commissioning  
Group  
Derek Higton, Local area nominated officer

Dear Mr Pettigrew

### **Joint local area SEND inspection in Nottinghamshire**

From 20 June to 24 June 2016, Ofsted and the Care Quality Commission (CQC) conducted a joint inspection of the local area of Nottinghamshire to judge the effectiveness of the area in implementing the disability and special educational needs reforms as set out in the Children and Families Act 2014.

The inspection was led by one of Her Majesty's Inspectors from Ofsted, with team inspectors including an Ofsted Inspector and children's services inspectors from CQC.

Inspectors spoke with children and young people who have special educational needs and disabilities, parents and carers, representatives of the local authority and National Health Service (NHS) officers. They visited a range of providers and talked to leaders, staff and governors about how they were implementing the special educational needs reforms. Inspectors looked at a range of information about the performance of the local area, including the local area's self-evaluation. Inspectors also met with leaders from the local area for health, social care and education. Inspectors reviewed performance data and evidence about the local offer and joint commissioning.

This letter outlines the findings from the inspection, including areas of strength and areas for further improvement.

## Main findings

- Children and young people describe very positive experiences of the support they receive from health services, social care provision and their education setting.
- Inspectors found a high level of commitment to implementing the reforms from all stakeholders. Approaches such as the education, health and care hub meetings are promoting the improved identification of children and young people's needs and also improving their outcomes.
- The local area's evaluation about how well it has implemented the reforms is broadly accurate. However, the local area's self-evaluation does not include sufficient reference to the views of parents, children and young people.
- Most parents who spoke with or contacted the inspectors during the inspection had some dissatisfaction with at least a part of the access to health provision, social care services or education. The level of dissatisfaction was a concern to the inspection team and leaders from the local area, including the corporate director of children, families and cultural services. However, inspection evidence indicates that parental dissatisfaction is often successfully resolved when it is identified. Special educational needs appeals by parents across Nottinghamshire are at a lower rate than found nationally.
- Health visitors and school nurses are effective in identifying children's needs at an early opportunity and this helps them to put effective support in place to improve their outcomes.
- National comparative information indicates that fewer children and young people in Nottinghamshire are identified as having special educational needs and/or disabilities than found in other areas nationally. Significantly fewer children and young people than found nationally have an education, health and care plan. Children and young people tend to have their needs met quickly because families of schools are able to draw on expertise and funding from within their family of schools group.
- Fewer 16- and 17-year-olds who have special educational needs and/or disabilities in Nottinghamshire are in education or training than found nationally. The quality of preparation for adulthood of children and young people who have special educational needs and/or disabilities is a concern in Nottinghamshire.
- The local authority maintains a secure children's home. The provision benefits Nottinghamshire's young people and those from across the county. The commitment by leaders to multi-agency working is exemplary and ensures that a wide range of needs are met.

## **The effectiveness of the local area in identification of children and young people who have special educational needs and/or disabilities**

### **Strengths**

- Nottinghamshire local authority has systems of funding for its schools, so that the additional needs of children and young people who have special educational needs and/or disabilities can be identified and met more quickly than was previously found in the area. Inspectors found numerous examples where this has happened and was successful.
- The early identification processes undertaken by health visitors and school nurses are effective in identifying children's needs at an early opportunity. These professionals act swiftly to support families and make timely responses to children's needs. However, developmental checks are not yet integrated with early years settings. There is a reliance on parents to link information between health professionals and education settings.
- The 'concerning behaviours pathway' is effective in providing a comprehensive assessment and diagnosis for children with social communication needs. It collates a range of information from various professionals and draws on the 'getting to know me' form. As a result, children and young people are getting their specific communication, social, emotional and mental health needs met.
- Early years speech and language support through the early years teams in children's centres is strong and easily accessible. These teams support the swift identification of children's needs and this reassures parents and carers that their child will access the necessary support.
- The work of school special educational needs coordinators (SENCOs) is of a good quality. Highly skilled SENCOs are adept at supporting their colleagues to highlight areas of concern regarding the children and young people they teach. The most effective SENCOs then ensure that quick and effective interventions are put in place to support each child or young person to make progress. The best practice inspectors found includes guiding children, young people and their parents to organisations that can provide support that helps meet the families' needs.
- In the most effective examples, some groups of schools in areas of Nottinghamshire have employed a 'family SENCO'. This strategy enables school SENCOs to draw quickly on the expertise of others and creates the necessary time for areas to analyse the needs of children and young people. A strong example found in Newark related to a group of schools identifying a rise in the number of children and young people diagnosed with autism. The identification across the locality led to useful professional development opportunities for staff.
- The process for assessing children's needs for an education, health and care plan is rigorous. This is because the local authority hosts regular meetings of the different professionals through the education, health and care assessment

and commissioning hub. The hub ensures that the views of all the professionals contribute to the assessment decision.

- The integrated children's disability service, through the short breaks and personalisation service, offers a short breaks scheme. Children who are referred access a package of support that is awarded through a resource allocation system (RAS). This system is usually successful in identifying the needs of the child or young person.
- The inspectors evaluated a number of examples of short breaks and found that there was some innovative use of funding to identify and meet the needs of children, young people and their families; for example, supporting children and young people to develop the skills to access community facilities independently. However, communication about short breaks is not as effective as it could be across Nottinghamshire. Some parents stated that they found the systems for identifying needs and the allocation of funding confusing. Other parents whose children did not access the service were unclear about why they did not have the opportunity to participate in the scheme.
- Children who have special educational needs and/or disabilities who are also looked after by the local authority have beneficial support available to them, through the virtual school and from independent reviewing officers, to help with the identification of their needs.

### **Areas for development**

- The local area's self-evaluation does not take into account enough information gathered from parents, children and young people.
- The 'tell it once' approach to identifying children and young people's needs is not well embedded. Although the use of a single electronic system aids health professionals' ability to see the information from some other teams, there are delays in communication between colleagues, particularly between acute and community services. A pilot project in one locality has reduced the number of times parents have had to tell their stories to different services. The project has improved the efficiency with which services are provided to children.
- Of the parents spoken to by inspectors during the inspection, too many stated that they would simply like more time to work with health, social care and education professionals. As a result, they felt that their child's specific needs were not identified as well as they could be.



## **The effectiveness of the local area in assessing and meeting the needs of children and young people who have special educational needs and/or disabilities**

### **Strengths**

- In the best examples of assessing children and young people's needs, services forged excellent relationships with parents. Furthermore, the liaison between services was of high quality. This ensured that children's needs were placed at the heart of services' work and were met effectively. Inspectors found that some school-level provision was of high quality. This was particularly the case when SENCos were given sufficient time to fulfil their roles and work closely with pupils, and when they invested their time in taking part in relevant professional development programmes across their families of schools and beyond. This often resulted in pupils making substantial progress in their learning and development.
- Some parents described how they felt fully involved in meeting the needs of their children. They stated that professionals in education settings, health services and social care departments gave them the necessary time to talk about their child's current needs and their family. Due to positive relationships the local area leaders were successful in engaging many parents in the inspection process.
- The Nottinghamshire family of schools model provides high-quality information to support the transfer of pupils from primary to secondary school. Information gathered about primary-aged pupils by the partner secondary school staff often benefitted their transfer to the secondary school. The information was often based on the experiences of the children and at times could be enhanced by sharing more detail about the continuity of the curriculum offered.
- Universal health teams have good access to the support provided by the 'schools and families specialist support service. The support is highly valued and enables groups of professionals to better meet the health needs of children and young people.
- Teachers and leaders in the schools visited by inspectors were highly complimentary about the support provided to them by the single point of contact in the local authority. School staff described how useful this team is in giving them advice and support when they are unsure about how to proceed with a concern. Discussions with the team do not always lead to safeguarding referrals, but to other routes of support to enable children and young people to have their needs met.
- Inspectors found examples of effective support for children and their families in the early years settings visited during the inspection. In those examples, the parents and the professionals knew and were able to account clearly for how the needs of the children were being met. When the transition to school worked best, the schools involved were supported to be ready for each child, rather than the children being made ready for the schools.

## Areas for development

- Education, health and care plans do not yet reflect enough information about the health and care needs of children and young people. Currently, there is a disproportionate emphasis on education. The plans do not contain sufficient, good-quality, time-limited targets, and this means that progress cannot be checked effectively at specified review points. The integrated children's disability service has set this as a priority area for improvement. Many parents described challenging circumstances in which they believed professionals in the education, health and care sectors did not always take their views into account. Inspectors found that parents and frontline professionals are committed strongly to the co-production (a way of working where children and young people, families and those that provide the services work together to create a decision or a service that works for them all) of provision for children and young people who have special educational needs and/or disabilities. The partners do not currently seize on that sentiment and use it across the local area.
- The new integrated community, children and young people's healthcare service is not yet working as well as it could. This is particularly in relation to the provision of therapy services, such as speech and language therapy and occupational therapy.
- The local offer website outlines a good range of provision across education, health and social care. However, although many people are using the website each month, but too few parents and young people spoken to during the inspection knew anything about this resource.

## The effectiveness of the local area in improving outcomes for children and young people who have special educational needs and/or disabilities

### Strengths

- Leaders across the local area demonstrate tenacity in improving outcomes for children and young people who have special educational needs and/or disabilities. Leaders in the local area are not scared to try new ways of working by piloting ideas in different areas of the county. For example, the local authority is reviewing how well children and young people's needs are being met in specialist education provision. Inspectors found that there were numerous examples of how the social care short breaks scheme contributes to improving lifelong outcomes for children and young people.
- Children and young people's outcomes are being improved because the local authority is effective in issuing new education, health and care plans within the 20-week timescale. This means that children and young people get access to what they need quickly.
- The proportion of children and young people who have special educational needs and/or disabilities continuing in education, employment or training at

17 years of age is increasing each year. However, this proportion is below the level found on average nationally.

- The local offer ensures that there is some effective educational provision for young people as they enter adulthood. This enables students to develop well and helps to meet their aspirations.
- Most parents told inspectors that their regular meetings with professionals, such as annual reviews, are useful. Common features of a successful process were that the meetings were well organised, the right information was collected in advance and the right people were contributing to the discussion. Many parents recognised that it is not always possible for all of the professionals to attend every meeting. These parents recognised that good-quality information shared in advance was helpful to improving outcomes for their children.
- Nottinghamshire County Council has developed an effective way of meeting the needs of children and young people who have social, emotional and mental health difficulties locally. Very few children and young people need to leave their locality to access provision. Schools are at the centre of the decision-making process. Funding is delegated to each family of schools, which enables them to commission the right services at the right time. As a result, since 2012, the number of children and young people who have special educational needs and/or disabilities who are permanently excluded from schools has been halved.

### **Areas for development**

- Preparing young people and their families for adulthood is not given sufficient priority currently in the local area. Not enough information is provided to young people and their parents about adult education, health and care in Nottinghamshire and beyond. The transition arrangements for young people and their parents between being a child and an adult are not as effective as they could be across the local area. Too many young people and their parents spoke about their significant anxieties related to this point of transition in their lives. Local area leaders have produced a transition protocol to address these concerns. The full impact of this protocol is yet to be seen by children and young people.
- Individual support plans for the short-breaks scheme do not have enough clear and measurable outcome targets. As a result, children and young people, parents and professionals do not understand well enough if the short breaks are improving the children's and young people's preparedness for the next stage of their lives.
- Children and young people who have special educational needs and disabilities are more likely to have poor attendance and are also more likely to be permanently excluded than all other children in Nottinghamshire. The current strategies used to tackle this are not strong enough.

- Health teams do not always use effective outcome measurement tools (the means by which they are expected to assess how well they are doing). Plans are not sufficiently focused on health outcomes.

Thank you for the time taken to meet with the inspection team during the inspection process.

Yours sincerely

Phil Harrison  
**Her Majesty's Inspector**

<b>Ofsted</b>	<b>Care Quality Commission</b>
Christopher Russell HMI Regional Director	Susan McMillan Deputy Chief Inspector, Primary Medical Services (North), Children, Health and Justice
Phil Harrison HMI Lead Inspector	Suzanne McDonnell CQC Lead Inspector
Liz Cornish Ofsted Inspector	Deepa Kholia-Mehta CQC inspector
	Lee Carey CQC Quality Assurance

CC: Clinical commissioning group(s)  
 Director, Public Health for the local area  
 Department for Education  
 Department of Health  
 NHS England

**19 September 2016****Agenda Item: 06****REPORT OF THE SERVICE DIRECTORS OF CHILDREN'S SOCIAL CARE  
AND YOUTH, FAMILIES & CULTURE****REVIEW OF THE SHORT BREAKS OFFER****Purpose of the Report**

1. This report seeks approval to undertake a review of the Council's Short Breaks Offer to ensure that it continues to meet statutory requirements and the needs of children and young people with disabilities and their families, whilst being financially sustainable.
2. The resultant recommendations of the review will be scheduled for a future meeting of the Committee for consideration.

**Information and Advice****Statutory duty**

3. Nottinghamshire County Council meets its statutory short breaks duty through a range of provision including: Universal Services, Flexible Short Breaks, Targeted Short Breaks, Overnight Short Breaks, Sitting and Befriending Services, Play for Disabled Children Services, residential short break provision and Short Breaks Foster Carers and Contract Carers.
4. Under Paragraph 6(1)(c) of Schedule 2 of the Children Act 1989, local authorities are required to provide services designed to assist individuals who provide care for disabled children to continue to do so, or to do so more effectively, by giving them breaks from caring.
5. As part of the Breaks for Carers of Disabled Children Regulations 2011, in performing the duty set out under Paragraph 6(1)(c) of Schedule 2 of the Children Act 1989, local authorities must provide, so far as is reasonably practicable, a range of services which are sufficient to assist carers to continue to provide care or to do so more effectively. In particular, local authorities must provide, as appropriate, a range of:
  - a) day-time care in the homes of disabled children or elsewhere
  - b) overnight care in the homes of disabled children or elsewhere
  - c) educational or leisure activities for disabled children outside their homes, and
  - d) services available to assist carers in the evenings, at weekends and during the school holidays.

6. Local authorities are required to publish their Short Breaks Offer in a Short Break Statement which should be reviewed and updated annually. Nottinghamshire's Short Break Statement is currently out of date and should be reviewed.

### **Feedback – families, young people and Ofsted/CQC Local Area Inspection**

7. In recent months, the Department has received feedback in relation to Nottinghamshire's Short Breaks Offer from young people and families, as well as via the recent Ofsted/CQC (Care Quality Commission) local area Special Educational Needs and Disability (SEND) inspection (June 2016).
8. During the Ofsted/CQC inspection, families reported that the current Short Breaks system could be clearer. This was echoed at a recent meeting with the Nottinghamshire Participation Hub (NPH) Steering Group.
9. The NPH is Nottinghamshire's local parent/carer forum, which represents the views of parents and carers of children and young people with additional needs or disabilities in Nottinghamshire. The NPH is focusing on Short Breaks as one of their four priority areas this year, creating the ideal opportunity for the Service to work in partnership with them to review the Short Breaks Offer.
10. The Pioneers have also expressed a keen interest in a review of Short Breaks, particularly in relation to transitions to adult services, as they feel that this is an area where improvements could be made for young people. The Pioneers are a group of young people (aged 10 – 25 years) with an interest in disabilities. The group provides a forum for the Pioneers to share their views and have a collective voice.
11. Recent feedback from the Ofsted/CQC Local Area Inspection Team has given additional weight to the feedback received from young people and families as they have highlighted Short Breaks and Transitions to adulthood as areas for further development in Nottinghamshire. The inspection also highlighted the importance of embedding co-production with young people and families into standard practice.

### **Co-production**

12. Co-production is the term used when an individual influences the support and services received, or when groups of people get together to influence the way that services are designed, commissioned and delivered.
13. Co-production is a requirement of the SEND Reforms 2014, and is a way of working that brings families and professionals together to review and shape future provision. It also provides the opportunity to make decisions together, including determining the most effective use of limited resources.
14. The current level of service user interest in short breaks indicates that this would be an opportune time to work with parents, children and young people to address the areas that have been highlighted by recent feedback and develop a co-produced Nottinghamshire Short Breaks Offer.

## Financial Considerations

15. In addition to the drive to embed a culture of co-production and the need to update the Short Break Statement, there is a financial imperative to review the Short Breaks Offer. The Flexible Short Breaks budget, which is Nottinghamshire's entry level of short break, has been overspent since 2014/15 (detailed below) and is projecting an overspend of £176,331 in 2016/17, if spending continues to increase at the rate of 7.18% as it did in 2015/16.

Financial Year	Budget	Actual Spend	Overspend
2014/15	£603,955	£679,192	£74,237
2015/16	£603,955	£728,015	£124,060

16. To mitigate the 2016/17 projected overspend, new requests for Flexible Short Breaks had been suspended on a temporary basis (with the agreement of the NPH). Requests are being placed on a waiting list to be worked through systematically and families are being directed to other support and the Local Offer in the meantime.
17. Whilst not all areas of the Short Breaks Offer will be experiencing the level of financial pressure described above, there is an interdependency within the short break system which means that pressure in one area is likely to impact on demand in another. A review of the whole Short Breaks Offer, undertaken in a spirit of co-production, presents the opportunity to engage families in discussions about thresholds to services and the most effective use of limited short break resource.
18. It is worth noting that other local authorities are also currently reviewing their Short Breaks Offer.

## The Review Process

19. The review will begin in September 2016 and will conclude within 9-12 months. It will undertake the following range of activities:
- Establish governance and steering group:  
The work of the review will be led by the Programme and Project Team and will initially report to the Improving Outcomes for Children & Young People with Disabilities project steering group.
  - Develop a Position Statement  
This stage will involve the development of a clear picture of the current Short Break Offer, including threshold criteria, levels of usage and cost. It will also include an analysis of the current pressures and interdependencies within the system
  - Co-production  
Co-production will be a constant theme throughout the project, but will initially require work to be undertaken with NPH and The Pioneers to establish ways of engaging and communicating with families and young people throughout the process.



- d. Other stakeholder consultation  
This stage will involve consultation with both commissioners and providers of short breaks to understand the market, forecast demand and identify key issues and priorities for partners
- e. Options  
Options for short break models of provision will then be designed and costed and once consultation has taken place, recommendations regarding Nottinghamshire's future Short Breaks Offer will be presented to the Children and Young People's Committee.

### **Other Options Considered**

- 20. A do nothing approach would fail to address both the findings of the recent Ofsted/CQC SEND inspection and the feedback received from NPH and Pioneers. Furthermore, a failure to act is likely to result in an increasing overspend on the short break budget.

### **Reason/s for Recommendation/s**

- 21. To ensure that the Local Authority has a Short Breaks Offer in place that meets statutory requirements and the needs of families, whilst being affordable in the long term.
- 22. To respond to feedback from families and young people and give them a voice in decisions that affect their lives.
- 23. To respond to legislation (SEND Reforms 2014) and feedback from the Ofsted/CQC local area inspection which places an emphasis on co-production.

### **Statutory and Policy Implications**

- 24. This report has been compiled after consideration of implications in respect of crime and disorder, finance, human resources, human rights, the NHS Constitution (public health services), the public sector equality duty, safeguarding of children and adults at risk, service users, sustainability and the environment and ways of working and where such implications are material they are described below. Appropriate consultation has been undertaken and advice sought on these issues as required.

### **Financial Implications**

- 25. This proposal aims to control the escalating cost of the Local Authority's Short Breaks Offer and mitigate the risk of a year on year overspend (see **paragraphs 15 & 16**).

### **Safeguarding of Children and Adults at Risk Implications**

- 26. Control of the Short Breaks budget will ensure that those children and young people who are most vulnerable will continue to receive the level of short break that they need.



## **Implications for Service Users**

27. Service users will be fully consulted throughout the review process and will co-produce the new Short Breaks Offer in line with the requirements of the Special Educational Needs and Disability Reforms 2014.

## **RECOMMENDATION/S**

That:

- 1) approval be given to undertake a review of the Council's Short Breaks Offer to ensure that it continues to meet statutory requirements and the needs of children and young people with disabilities and their families, whilst being affordable.
- 2) the recommendations resulting from the review are brought back to a future meeting of the Committee for consideration.

**Derek Higton**  
**Service Director, Youth, Families & Culture**

**For any enquiries about this report please contact:**

Jill Norman  
Group Manager, Integrated Children's Disability Service  
T: 0115 9932566  
E: [jill.norman@nottsgov.uk](mailto:jill.norman@nottsgov.uk)

## **Constitutional Comments (LM 17/06/16)**

28. The recommendations in the report fall within the Terms of Reference of the Children and Young People's Committee.

## **Financial Comments (SS 06/07/16)**

29. The financial implications of the report are contained within paragraph 25 above.

## **Background Papers and Published Documents**

None.

## **Electoral Division(s) and Member(s) Affected**

All.

C0848



**19 September 2016****Agenda Item: 07**

## **REPORT OF THE SERVICE DIRECTOR, YOUTH, FAMILIES AND CULTURE**

### **CHANGES TO THE STAFFING ESTABLISHMENT IN EARLY HELP AND YOUTH JUSTICE SERVICES**

#### **Purpose of the Report**

1. To seek approval for changes to the staffing establishment of the Early Help and Youth Justice Services in light of the budget and business cases for change approved by Full Council on 26 February 2015 and 25 February 2016 and changes to partnership contributions to the Youth Justice Service.

#### **Information and Advice**

2. The Early Help group of services delivered by Nottinghamshire County Council include the Young People's Service, the Early Childhood and Early Help Locality Service and the School Swimming Service. All three service areas have conducted reviews to ensure that they are placed to deliver on the Council's strategic vision and to continue to deliver high quality services at a time of reducing funding. The wider business cases for the Young People's Service and Early Childhood and Early Help Locality Service, which include the staffing changes within this report, were agreed at the meetings of Full Council on 26 February 2015 (Business Cases B05) and 25 February 2016 (Business Cases B09 and B10). Overall, the County Council is facing a significant budget shortfall by 2020 caused by reductions in Government funding and rising demand for social care services. The School Swimming Service must reduce its reliance on Council subsidies and prepare for an alternative delivery model in the future.
3. The Youth Justice Service is run by Nottinghamshire County Council and is charged with preventing offending and re-offending by children and young people. The service has Nottinghamshire Police, the local Clinical Commissioning Groups and the National Probation Service as statutory partners. Reductions in partnership contributions from 2017 necessitate a reduction of staffing in the Youth Justice Service. A review has been undertaken to ensure that despite the funding reductions the service can continue to deliver on its responsibilities. There has been a significant decrease in young people in contact with the criminal justice system over the past five years.

#### **The Young People's Service**

4. The Young People's Service is required to make savings of £50,000 by April 2017 and a further £138,700 by April 2018 as part of budget reductions across the Council. The service's role in delivering Nottinghamshire's Youth Offer of access to high quality, safe and enjoyable positive social education activities in the communities of highest need and

to facilitate a structure for young people to voice their opinions and to shape the services provided for them by the Council and other organisations remain a high priority for the Council.

5. As part of a package of wider measures the service reviewed its delivery and staffing structure through a formal consultation with partners, staff, service users and recognised trade unions. These changes to staffing aim to reduce management and to ensure that there is the right skill mix, expertise and capacity in front line teams. The senior management responsibility for the Young People's Services and School Swimming will be merged with the Group Manager for Early Help Services as part of these proposals. Overall, staffing within the Youth Service group (which includes the School Swimming Service as detailed below) will reduce from 91.24 full time equivalents (fte) to 83.39, a reduction of 7.85. In summary, Committee is asked to consider:
  - disestablishing 1 full time equivalent (fte) Group Manager (Adolescent and Locality Early Help Services) (Hay Band G) post from 31/3/2017
  - disestablishing 3 fte Youth Service Locality Manager (Hay Band E) posts from 31/3/2017
  - disestablishing 2 fte Youth Service Senior Practitioner posts from 31/3/2017
  - disestablishing 5.77 fte Youth Worker (term time only) posts from 31/3/2017
  - disestablishing 1 fte Youth Service Logistics and Operations (Hay Band A) post from 31/3/2017
  - disestablishing 1 fte Youth Service Technical Specialist (Hay Band A) post from 31/3/2017
  - disestablishing 1.1 fte Youth Service Facilities Assistant (Grade 4) posts from 31/3/2017
  - disestablishing 3.3 fte Youth Worker (term time only) posts from 31/3/2018
  - disestablishing 0.66 fte Youth Support Worker (term time only) post from 31/3/2018
  - establishing 6.38 fte Youth Service Senior Practitioner (JNC 26-31) (term time only plus 10 days) posts from 1/4/2017
  - establishing 1 fte Youth Service Senior Operations and Logistics Technical Specialist (Hay Band B) post from 1/4/2017
  - establishing 1 fte Youth Service Commissioned Projects Senior Practitioner (Hay Band C) post from 1/8/2016
  - establishing 1 fte Youth Service (County Wide) (JNC 26-31) Senior Practitioner post from 1/4/2017
  - establishing 1.3 fte Youth Worker posts from 1/4/2017
  - establishing 0.2 fte Youth Worker post from 1/4/2018
  - establishing 1 fte Youth Service Building Manager (Grade 4) post from 1/4/2017.

Current and proposed structure charts are attached as **Appendices 1, 2 and 3**.

### **Early Childhood and Early Help Locality Service**

6. The Early Childhood and Early Help Locality Service is required to make savings of as part of budget reductions across the Council. These savings will be achieved in part through a staffing restructure and through a forthcoming review of the Early Years Specialist Advisory Team. The service will continue to deliver the Council's statutory early

years duties as well as Children's Centre services via its contractual arrangements with Nottinghamshire Healthcare Trust. Strategic oversight of parenting approaches, child poverty and life chances, and locality partnership arrangements will be absorbed into the wider departmental structure. A review of current staffing structures has been undertaken and Committee is asked to consider the changes below. This would reduce the service's staffing from 22.8 fte to 18.5 fte.

- disestablishing 0.8 fte Child Poverty and Parenting Manager (Hay Band D) post from 31/3/2017
- disestablishing 2.8 fte Locality Manager (Hay Band D) posts from 31/3/2017
- disestablishing 1 fte Team Manager – Performance and Quality (Hay Band D) post from 31/3/2017
- disestablishing 1 fte Lead Officer (Education of Two Year Olds) (Hay Band D) post from 31/3/2017
- disestablishing 1 fte Senior Professional Practitioner (Hay Band D) post from 31/3/2017
- disestablishing 2.2 fte Early Years Teacher (Soulbury) posts from 31/3/2017
- establishing 1 fte Strategic Early Years Manager (Hay Band E) post from 1/4/2017
- establishing 1.5 fte Early Years Project Officer posts (Hay Band C) from 1/4/2017
- establishing 1 fte Early Childhood Commissioning Manager (Hay Band D) post from 1/4/2017
- establishing 1 fte Contract and Performance Manager (Hay Band B) post from 1/4/2017.

Current and proposed structure charts are attached as **Appendices 4 and 5**.

## **School Swimming Service**

7. A report regarding future options for the delivery of a swimming service to schools was considered by Children and Young People's Committee on 20 June 2016. The report outlined the need to restructure the staffing of the service to ensure that it can operate within its budget with a view to a decision on a future model of service delivery. Committee is asked to consider the following proposals:
  - disestablishing 1.71 fte School Swimming Service Manager post from 31/8/2017
  - disestablishing 0.66 fte Administration Assistant post (Grade 4) from 31/8/2017
  - disestablishing 2 fte Administration Assistant posts (Grade 3) from 31/8/2017
  - establishing 0.75 fte Logistics and Operations Technical Specialist (grade to be evaluated) post from 1/9/2016
  - establishing 1 fte Team Manager (grade to be evaluated) post from 1/9/2017
  - establishing 1.32 fte Senior Practitioner (grade to be evaluated) post from 1/9/2017
  - establishing 0.75 fte Administration Assistant (Grade 4) posts from 1/9/2017
  - establishing Sessional Senior Instructors (grade to be evaluated) posts from 1/9/2017 at a volume determined by service need
  - establishing Sessional Instructors (Grade 5) posts from 1/9/2017 at a volume determined by service need

Current and proposed structure charts are included within **Appendices 1, 2 and 3.**

## **The Youth Justice Service**

8. The Youth Justice Service is funded by the County Council along with a ring-fenced government grant and contributions from the National Probation Service, Nottinghamshire Police, Public Health Grant and a contribution from the Police and Crime Commissioner, administered through the Safer Nottinghamshire Board (SNB). The main grant from government, which comes via the Youth Justice Board, has reduced by 19% since April 2015 and is projected to reduce further. Funding from the Public Health Grant is due to be cut by 50% in 2017 and the amount received from the National Probation Service is also due to reduce by 89%. The current projection is that Police and SNB funding will reduce between 25-33%. Overall, youth funding will reduce by 23% over the coming 12 months. There have been considerable reductions in the number of young people in the Youth Justice system in recent years due to effective prevention strategies which has led to a drop in the workload overall. Those young people who remain in the system are some of the most difficult and damaged and the revised structure takes into account the skills and intensity of work needed to improve their outcomes and to protect the public from harm. Along with reductions to running and contractual costs, reductions in overall staffing levels are required to produce a balanced budget. Committee is asked to consider the following staffing proposals:

- disestablishing 1 fte Youth Justice Operations Manager post (Hay Band F) from 31/3/2017
- disestablishing 1 fte Operational Support Team Manager post (Hay Band D) from 31/3/2017
- disestablishing 1 fte Outreach Team Manager post (Hay Band D) from 31/3/2017
- disestablishing 1 fte Youth Justice Senior Practitioner post (Hay Band B) from 31/3/2017
- disestablishing 1 fte Development Worker post (Hay Band B) from 31/3/2017
- disestablishing 7.14 fte Youth Justice Case Manager posts (Hay Band A/B) from 31/3/2017
- disestablishing 1.6 fte Youth Justice Service Officer posts (Grade 5) from 31/3/2017
- disestablishing 4 fte Youth Work Coordinator (JNC) posts from 31/3/2017
- establishing 0.6 fte Project Manager – Youth Justice Change post (grade to be evaluated) from 1/3/2017 fixed term until 31/8/2020
- establishing 1 fte Youth Justice Interventions Manager post (grade to be evaluated)
- establishing 3 fte Area Interventions Worker posts from 1/4/2017 (grade to be evaluated).

Current and proposed structure charts are attached as **Appendices 6 and 7.** Staffing will reduce from 52.74 full time equivalents to 39.6, a reduction of 13.14 full time staff.

## **Other Options Considered**

9. A range of staffing options have been considered and the final proposal reflects the outcomes of consultations with staff, Trades Unions and partner agencies.

## **Reason/s for Recommendation/s**

10. The recommendation supports the decision made by Full Council on 26 February 2015 and 25 February 2016 and the continued delivery of statutory youth justice services whilst reducing the contribution from partner agencies.

## **Statutory and Policy Implications**

11. This report has been compiled after consideration of implications in respect of crime and disorder, finance, human resources, human rights, the NHS Constitution (public health services), the public sector equality duty, safeguarding of children and adults at risk, service users, sustainability and the environment and ways of working and where such implications are material they are described below. Appropriate consultation has been undertaken and advice sought on these issues as required.

## **Implications for Service Users**

12. Implications for service users have been fully explored through the business cases presented to Full Council. Equality Impact Assessments have been completed for each services proposal. Both young people who offend and victims of crime will continue to experience services delivered in line with national quality standards,

## **Human Resources Implications**

13. A range of staffing options have been considered and the final proposal reflects the outcomes of consultations with staff, Trades Unions and partner agencies. Changes to staffing will be undertaken utilising the established procedures.

## **Crime and Disorder Implications**

14. Section 38 of the Crime and Disorder Act (1998) places a duty on the local authority with named partners to secure all of the appropriate youth justice services for the local area. The staffing changes in this report and the wider proposed changes to the delivery of the Youth Justice Service will mean that the local authority can continue to provide a service at the necessary level to comply with the legislation.

## **Financial Implications**

15. Changes to the staffing of the Young People's Service will generate savings of £85,000 per annum and a further £140,000 from 2017-18. The deletion of the Group Manager post will contribute an additional £70,000 to the Family Service budget reduction business case. Overall, the reductions achieve the staff related savings required in the range of the related business cases.

16. The changes to the structure in Early Years & Early Help Locality Services if agreed will contribute £163,000 towards the overall business case and reduced funding based on the anticipated grades for posts.
17. Changes to the School Swimming Service will save £20,000 per annum which will help with the sustainability of the service as decisions are made about a future delivery model. This saving also takes into account a change in the way that sessional staff are utilised which will not have a direct implication for the staffing structure.
18. The Youth Justice Service staffing proposals would save £417,000 per annum based on the anticipated grading of posts. This will contribute to required savings due to reductions in external funding including the reductions from the Public Health Grant.

## **RECOMMENDATIONS**

- 1) That the changes to the staffing establishment of the Early Help and Youth Justice Services, as detailed in the report, be approved.

**Derek Higton**  
**Service Director, Youth, Families and Culture**

**For any enquiries about this report please contact:**

Laurence Jones  
Group Manager, Early Help Services.  
T: 01623 520109  
E: [laurence.jones@nottsc.gov.uk](mailto:laurence.jones@nottsc.gov.uk)

### **Constitutional Comments (initials xx/xx/16)**

19.

### **Financial Comments (CDS 31/08/16)**

20. The financial implications of the report are set out in paragraphs 15-18 above.

### **Background Papers and Published Documents**

Except for previously published documents, which will be available elsewhere, the documents listed here will be available for inspection in accordance with Section 100D of the Local Government Act 1972.

Annual Budget reports to Full Council on 26 February 2015 and 25 February 2016  
Equality Impact Assessments

### **Electoral Division(s) and Member(s) Affected**

All.

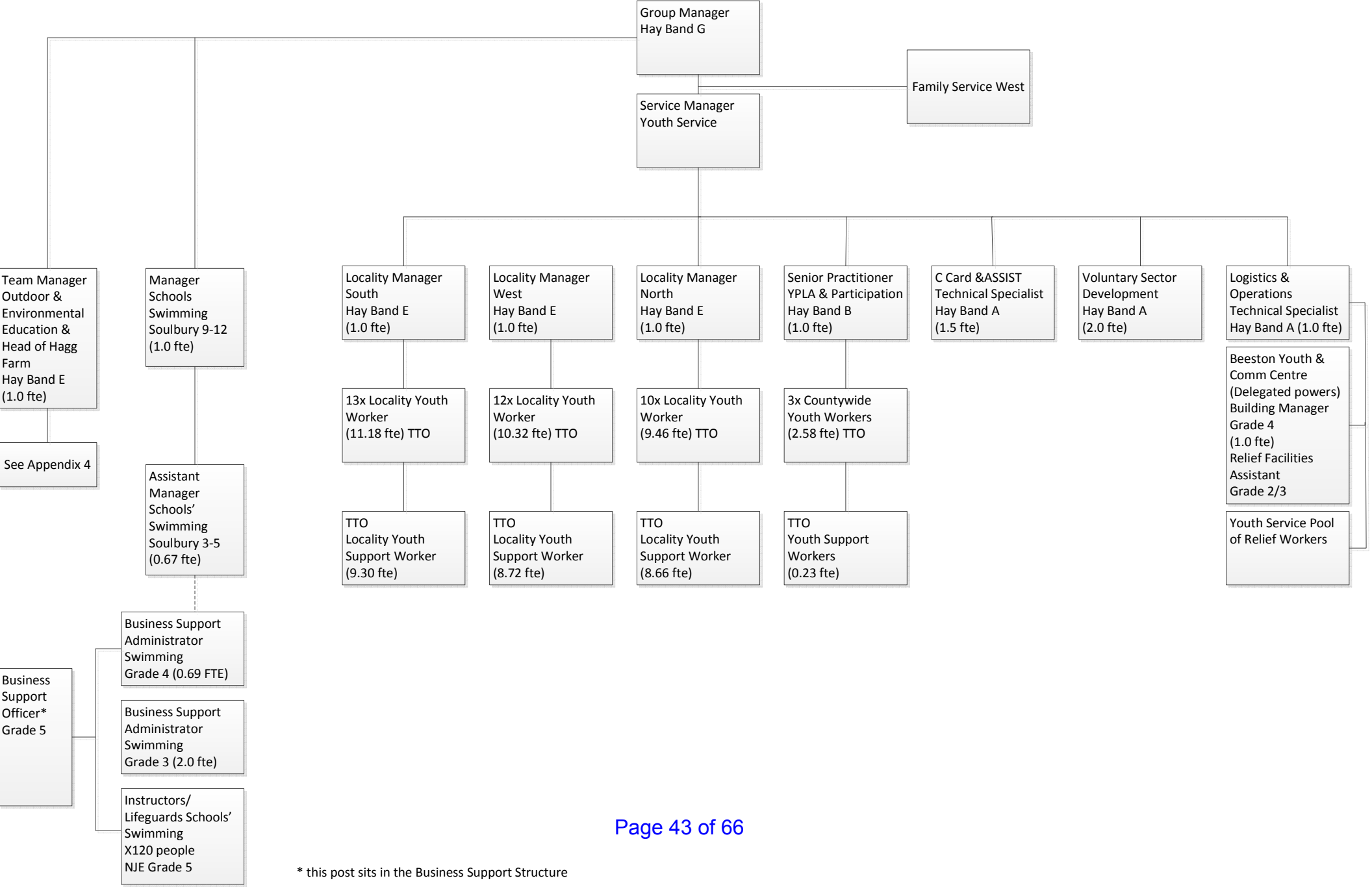
C0863



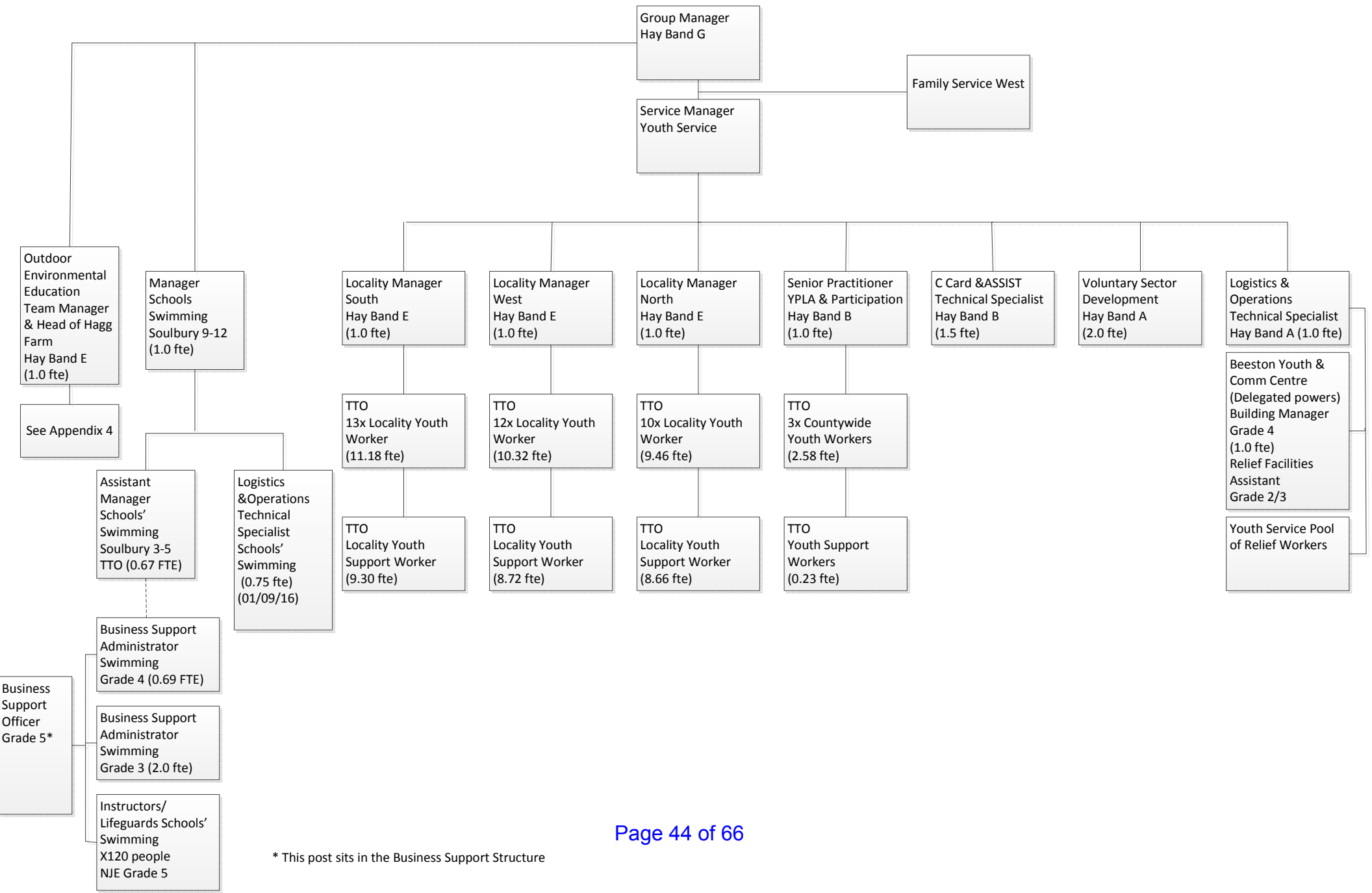


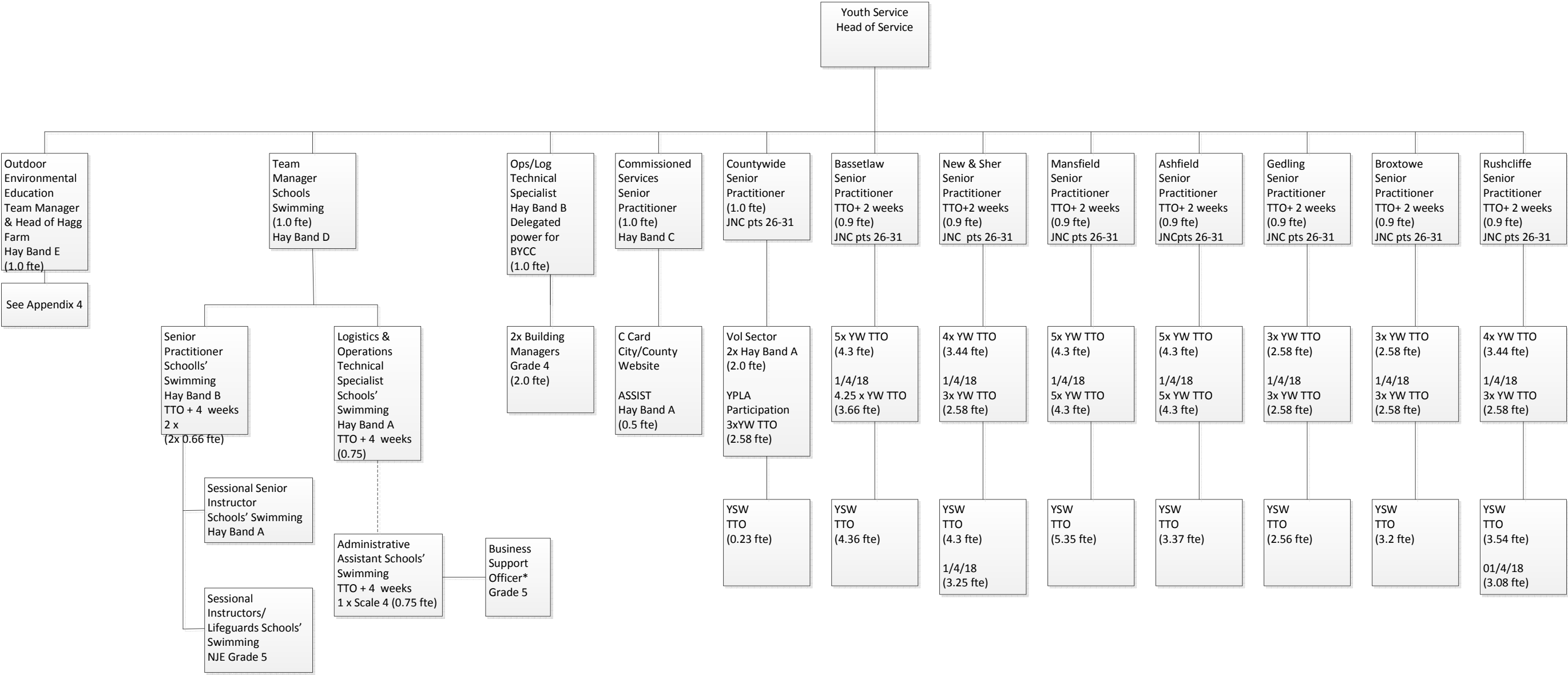


Family and Youth Service Structure – Current



\* this post sits in the Business Support Structure





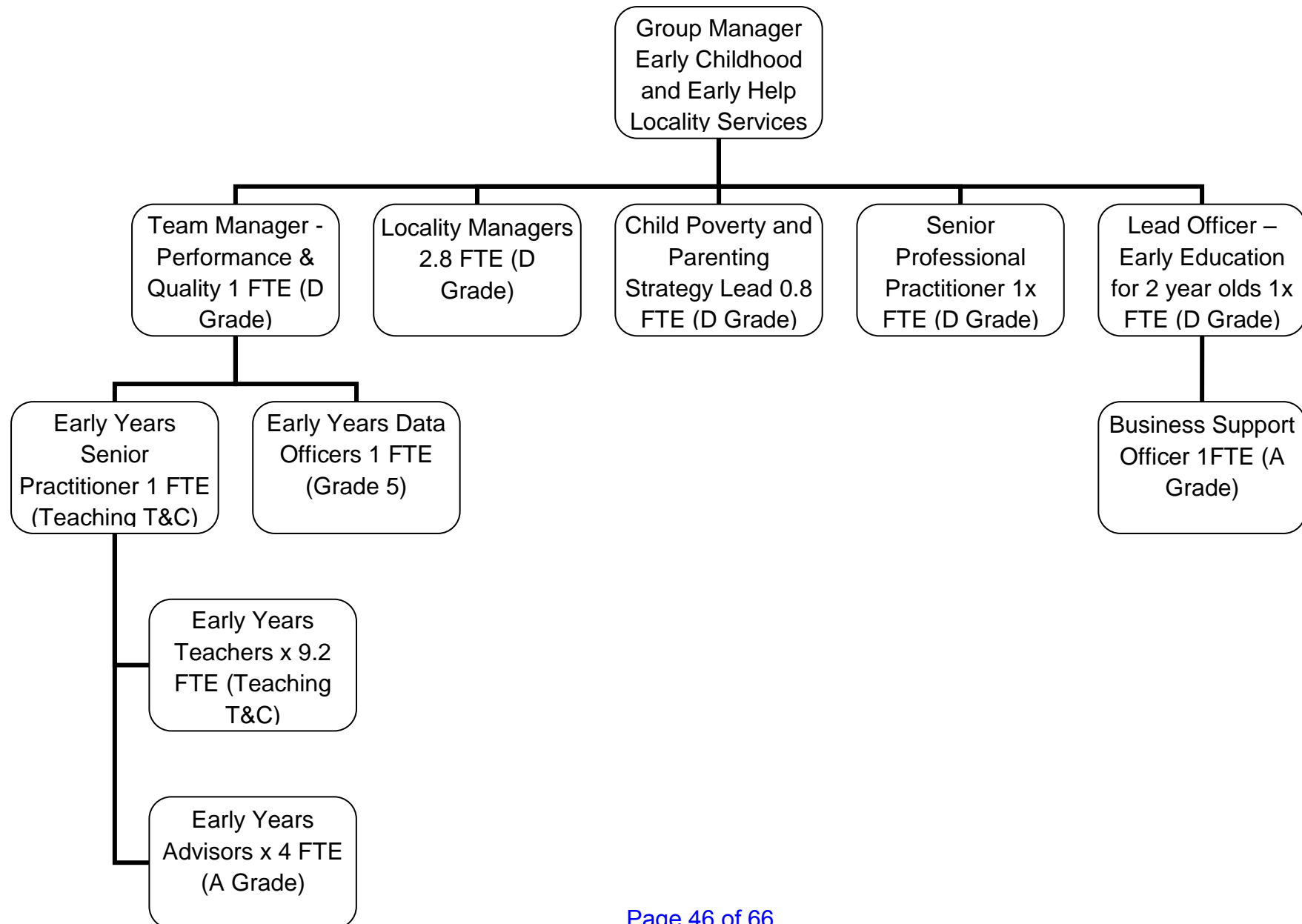
\* This post sits in Business Support structure

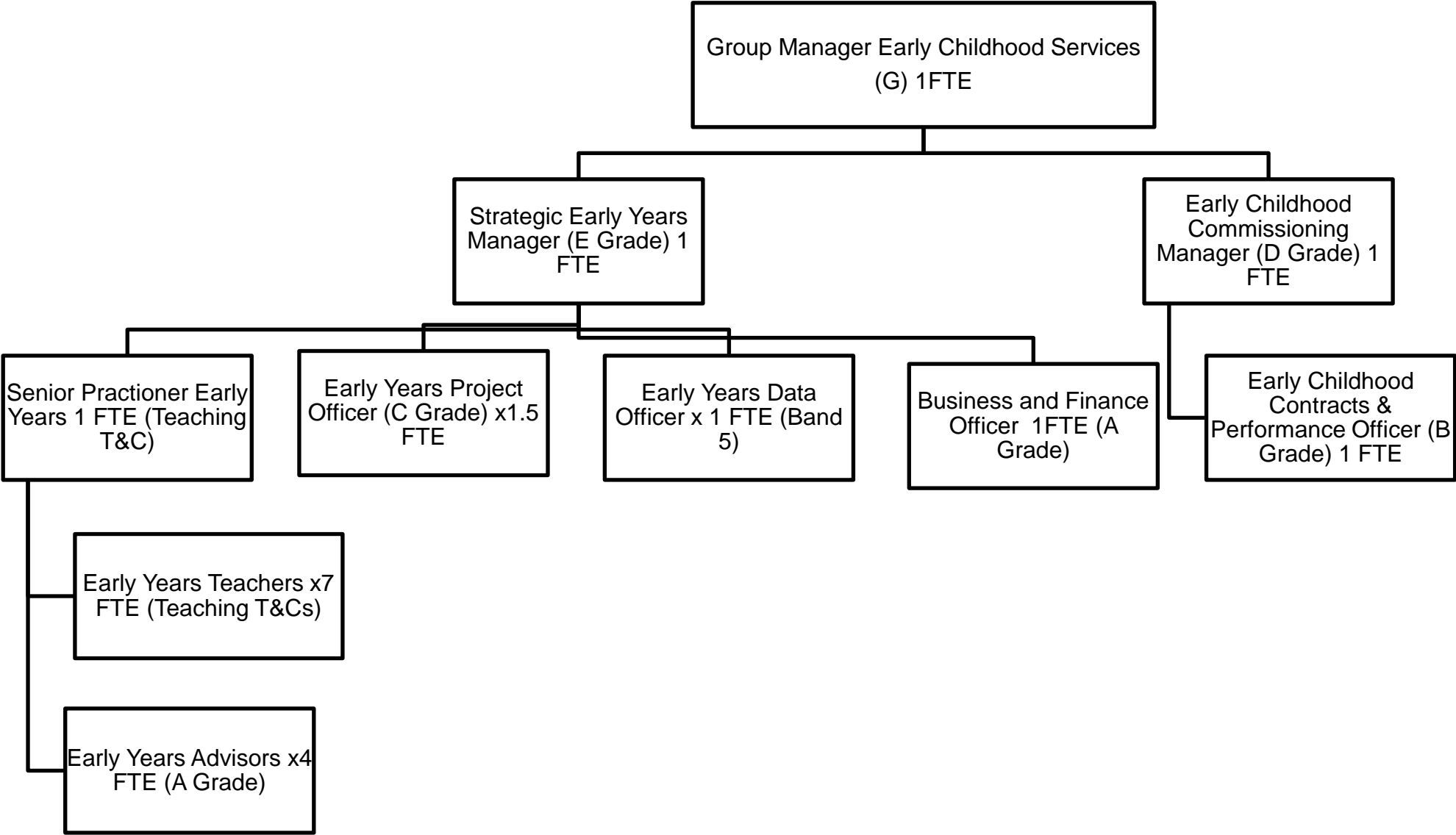
Note: Changes to School Swimming are from 01/09/2017

Hay Band posts are indicative grades

## Early Childhood and Early Help Locality Service – Current Structure (until 31.3.17)

### Appendix 4

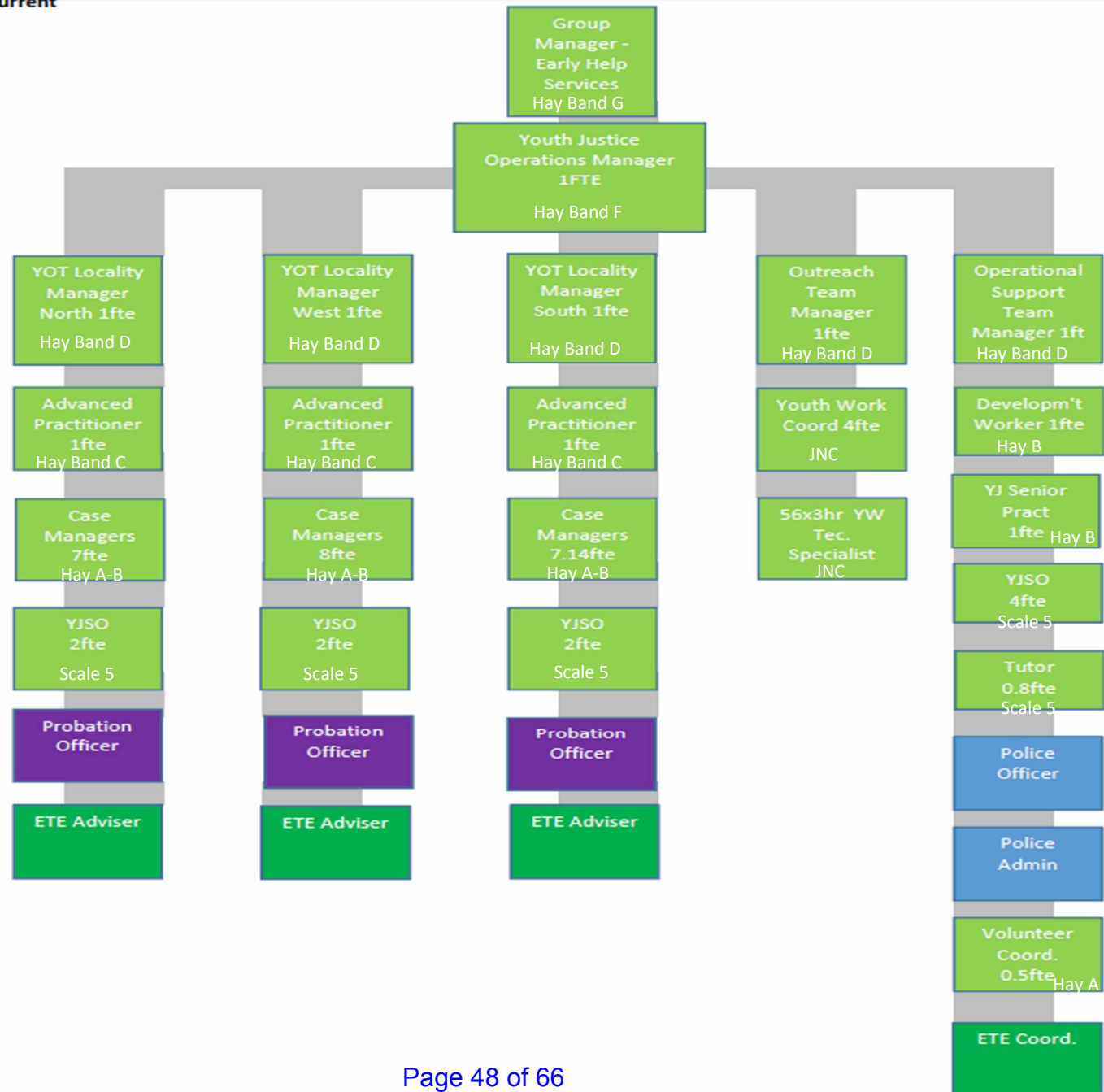




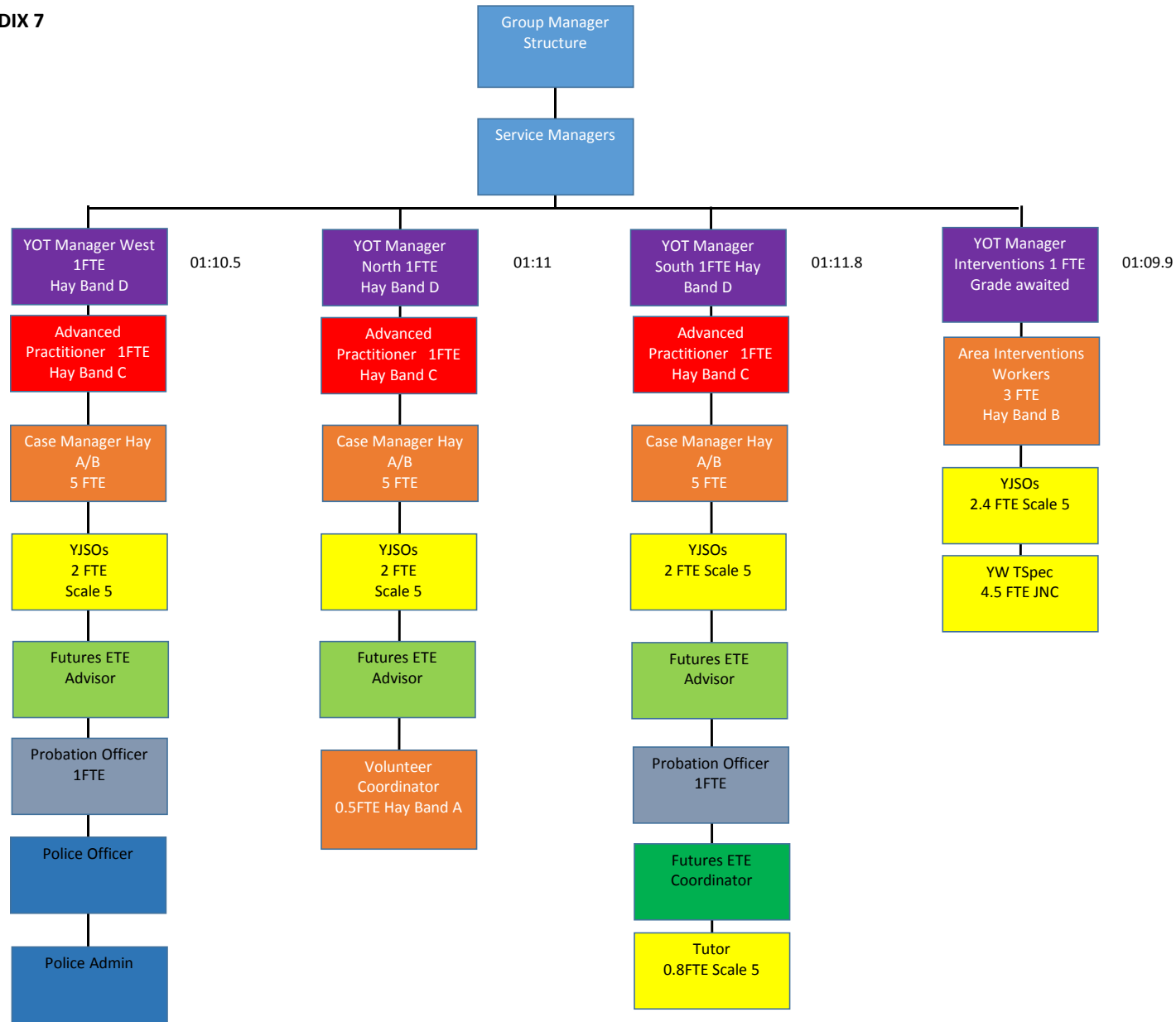


## APPENDIX 6

### Youth Justice Service - Current



## APPENDIX 7





**19 September 2016****Agenda Item: 08****REPORT OF ACTING SERVICE DIRECTOR, EDUCATION STANDARDS AND  
INCLUSION****NEWARK FREE SCHOOL****Purpose of the Report**

1. The purpose of this report is to update the Committee on the Torch Academy Free School proposal in the context of available strategic Place Planning projections of demand for secondary school places in Newark Town.

**Information and Advice****The Newark Free School (secondary)**

2. A letter dated 13 July 2016 to the Corporate Director, Children, Families and Cultural services, from the Free Schools Group at the Department for Education (DfE) advised that a bid to establish a new mainstream secondary free school with post-16 provision has been approved by the DfE. The school is currently known as *Newark – Toot Hill Free School*. The expectation is that the presence of this new school will encourage the retention of students in the town who might otherwise have moved over the border into Lincolnshire or made the journey from Newark to Bingham to attend Toot Hill School. The additional places will also provide accommodation for the growing number of secondary students in the area, including those generated by the several, large proposed housing developments in and around the town.
3. In the Newark Town area there are currently two secondary schools: The Magnus Church of England Academy (Requires Improvement) and The Newark Academy (inspected 2012 Requires Improvement). The new free school has stated that it will have a capacity of 830 and will include a sixth form. The Planned Admission Number (PAN) can therefore be inferred at 150, i.e. 5 form entry.
4. Current data indicates an annual outflow of approximately 170 secondary aged pupils to nearby Nottinghamshire and Lincolnshire schools (845 children in total). A breakdown is as follows:-

*As at January 2016:*

School	Area	Academic year					Total
		Yr 7	Yr 8	Yr 9	Yr 10	Yr 11	
<b>Bingham Toot Hill</b>	Rushcliffe	138	101	109	72	41	461
<b>Tuxford Academy</b>	Bassetlaw	23	20	33	8	14	98
<b>Sir William Robertson</b>	Lincolnshire	39	31	12	28	49	159
<b>The King's School Grantham</b>	Lincolnshire	12	8	10	12	8	50
<b>Kesteven and Grantham Girl's School</b>	Lincolnshire	13	14	15	17	18	77
<b>Total:</b>		225	174	179	137	130	845

5. From September 2017 there are 124 known children who may leave Newark for secondary education. Pupils may elect to remain in Newark if the Toot Hill Free School provision is ultimately judged by Ofsted to be a 'Good' or "Outstanding" and is attractive to parents. It should be noted, however, that Ofsted undertakes to inspect a new school within three years of opening.
6. If the Newark Toot Hill Free School is located in the Newark Town area, it is unlikely that students who have already made the move to schools outside Newark will move back to the town. However, the assumption has been made that when the new school is established, at least a large percentage of Newark Town students will elect to start their secondary education within the town.
7. Significantly, there are several large housing developments proposed in the Newark area: Newark Growth Point and the area south of Collis Close. If fully realised over the 15 year term, this housing growth could raise the demand for secondary school places by over 920. On an annual basis therefore, the Newark Toot Hill Free School could potentially recruit 124 students from the existing population and 184 from housing growth ( $920/5 = 184$ ), creating an annual demand for places of circa. 300 if all housing developments are realised.
8. The increased demand for secondary school places in Newark Town would therefore be accommodated in the existing secondary schools and the proposed Toot Hill Free School. In addition, the capacity of Toot Hill Bingham to accommodate out-of-catchment students will be reduced due to proposed housing developments and the school plans to manage down its PAN in order to allow it to grow in line with the expected arrivals from housing developments.

#### **Other secondary schools in the Newark Town area**

9. There are two existing secondary schools in the area: Magnus CE Academy and Newark Academy.
10. The tables and charts contained in **Appendix 1** illustrate the latest projected demand for places in each of the Newark Town schools over the next 10 years from school year 2016/17. The figures are based upon the January 2016 school census and the latest mid-year population estimates available from the Office of National Statistics. This data suggests that, given the assumption that there will be an additional demand for circa. 300 places per cohort, (circa.1,500 in total over all school years), due to the retention of Newark

students within the town and planned housing developments, there will be a need for additional places to be provided in the town of Newark.

### **Other Options Considered**

11. The report is for information only.

### **Reason/s for Recommendation/s**

12. The report is for information only.

### **Statutory and Policy Implications**

13. This report has been compiled after consideration of implications in respect of crime and disorder, finance, human resources, human rights, the NHS Constitution (public health services), the public sector equality duty, safeguarding of children and adults at risk, service users, sustainability and the environment and ways of working and where such implications are material they are described below. Appropriate consultation has been undertaken and advice sought on these issues as required.

### **RECOMMENDATION/S**

- 1) That the establishment of the new Newark – Toot Hill Free School be noted.

**Marion Clay**

**Acting Service Director – Education, Standards and Inclusion**

**For any enquiries about this report please contact:**

Marion Clay

Acting Service Director, Education Standards and Inclusion

T: 0115 9773589

E: marion.clay@nottsc.gov.uk

### **Constitutional Comments**

14. As this report is for noting only, no Constitutional Comments are required.

### **Financial Comments (TMR 23/08/16)**

15. As this report is for noting only, no Financial Comments are required.

### **Background Papers and Published Documents**

None.

### **Electoral Division(s) and Member(s) Affected**

All.

C0874





## APPENDIX A

DfE No: 4017

School Name: Magnus Church of England Academy

Age Range: 11 to 18

District: New ark

Electoral Ward:

Type: Secondary School

Year	11+	12+	13+	14+	15+	Total Statutory	16+	17/18	Total Sixth Form	Total All Ages
------	-----	-----	-----	-----	-----	-----------------	-----	-------	------------------	----------------

### NOR (School Census)

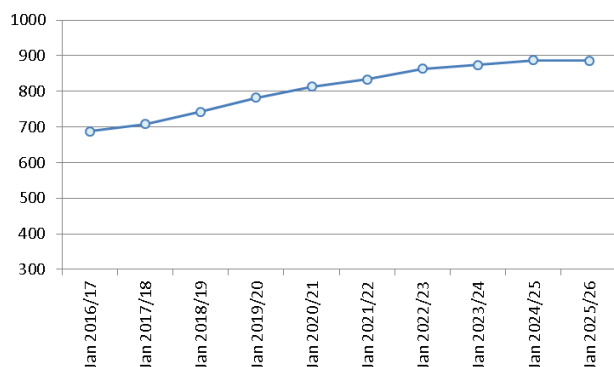
(Jan 2015/16)	123	120	133	150	164	690	45	30	75	765
---------------	-----	-----	-----	-----	-----	-----	----	----	----	-----

### Projections

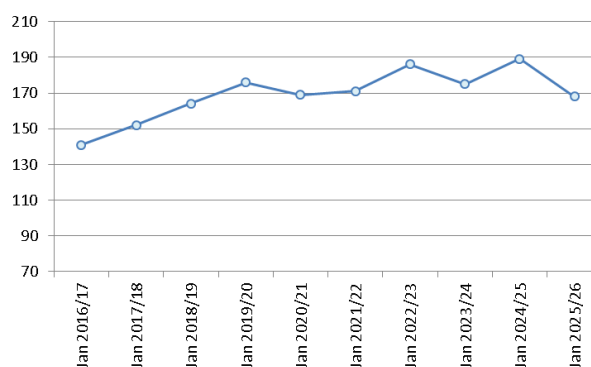
Jan 2016/17	141	126	126	139	155	687	39	36	75	762
Jan 2017/18	152	145	133	133	145	708	45	31	76	784
Jan 2018/19	164	154	150	138	137	743	42	35	77	820
Jan 2019/20	176	162	155	151	138	782	40	34	74	856
Jan 2020/21	169	174	163	156	151	813	40	32	72	885
Jan 2021/22	171	167	175	164	156	833	44	32	76	909
Jan 2022/23	186	169	168	176	164	863	45	35	80	943
Jan 2023/24	175	184	170	169	176	874	48	36	84	958
Jan 2024/25	189	173	185	171	169	887	51	38	89	976
Jan 2025/26	168	187	174	186	171	886	49	41	90	976

PAN	Sep 2016/17	210	210	210	210	210	1050				
-----	-------------	-----	-----	-----	-----	-----	------	--	--	--	--

Projected 11-15 demand



Projected Y7 demand



### Notes:

1. The above figures are based on the latest projections available and will be subject to change. There are a number of factors that can affect the projections, such as significant changes to a school's Ofsted rating and parental preference.
2. The difference between the 'Total Statutory' year on year figure and the PAN indicates places available in the school. (2016/17: 1050 - 687 = 363 places available).

DfE No: 4013

School Name: The New ark Academy

Age Range: 11 to 18

District: New ark

Electoral Ward: Balderton

Type: Secondary School

Year	11+	12+	13+	14+	15+	Total Statutory	16+	17/18	Total Sixth Form	Total All Ages
------	-----	-----	-----	-----	-----	-----------------	-----	-------	------------------	----------------

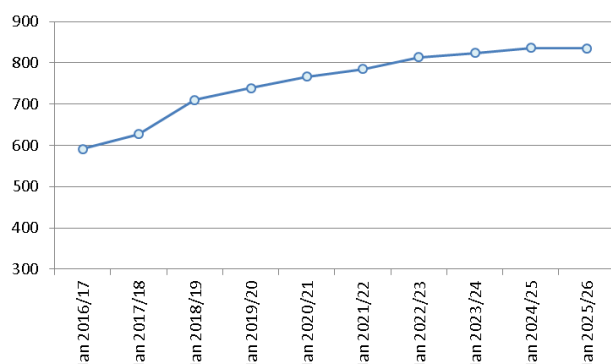
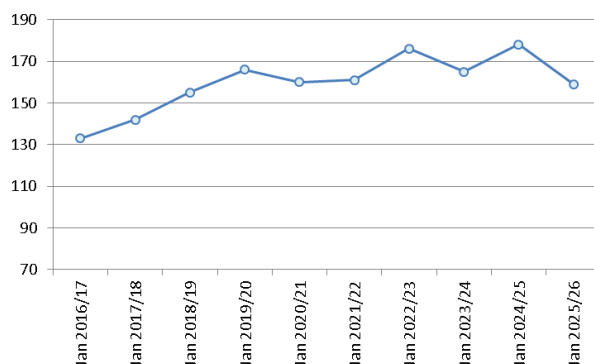
**NOR (School Census)**

(Jan 2015/16)	120	126	83	116	136	581	32	16	48	629
---------------	-----	-----	----	-----	-----	-----	----	----	----	-----

**Projections**

Jan 2016/17	133	126	127	86	119	591	13	25	38	629
Jan 2017/18	142	139	127	130	89	627	19	10	29	656
Jan 2018/19	155	149	141	131	134	710	14	13	27	737
Jan 2019/20	166	157	146	140	130	739	21	11	32	771
Jan 2020/21	160	168	154	145	139	766	20	16	36	802
Jan 2021/22	161	162	165	153	144	785	22	16	38	823
Jan 2022/23	176	163	159	164	152	814	22	17	39	853
Jan 2023/24	165	178	160	158	163	824	24	17	41	865
Jan 2024/25	178	167	175	159	157	836	25	18	43	879
Jan 2025/26	159	180	164	174	158	835	24	20	44	879

<b>PAN</b>	Sep 2016/17	210	210	210	210	210	1050				
------------	-------------	-----	-----	-----	-----	-----	------	--	--	--	--

**Projected 11-15 demand****Projected Y7 demand****Notes:**

1. The above figures are based on the latest projections available and will be subject to change. There are a number of factors that can affect the projections, such as significant changes to a school's Ofsted rating and parental preference.
2. The difference between the 'Total Statutory' year on year figure and the PAN indicates places available in the school. (2016/17: 1050 - 591 = 459 places available).

**19 September 2016**

**Agenda Item: 09**

## **REPORT OF THE ACTING SERVICE DIRECTOR, EDUCATION STANDARDS AND INCLUSION**

### **LOCAL AUTHORITY GOVERNOR APPOINTMENTS AND AUTHORITY GOVERNOR REAPPOINTMENT TO SCHOOL GOVERNING BODIES DURING THE PERIOD 1 JUNE TO 31 JULY 2016**

#### **Purpose of the Report**

1. To note the appointment of Local Authority (LA) governors to school governing bodies for the period 1 June to 31 July 2016.
2. To note the reappointment of an Authority governor who reached the end of their term of office during the period 1 June to 31 July 2016

#### **Information and Advice**

3. Under the School Governance (Constitution) (England) Regulations 2012, as amended by the School Governance (Constitution and Federations) (England) (Amendment) Regulations 2014, governing bodies of maintained schools were required to reconstitute to a skills-based model of governance by September 2015, and are allowed one LA governor on the reconstituted governing body. For this model of governance, governing bodies may set eligibility criteria for, and appoint, the Local Authority governor.
4. Under these Regulations the County Council is responsible for nominating individuals as prospective governors. Nominations are made by the County Council, in accordance with the eligibility criteria provided by the governing body. When nominating new governors or re-nominating existing governors, the County Council must consider the skills and experience the governing body needs in order to be effective.
5. Local Authority governors nominated by the County Council and appointed by school governing bodies during the period 1 June to 31 July 2016 are as follows:

<b>ASHFIELD</b>	
Healdswood Infant and Nursery	Mr John Foster
<b>BASSETLAW</b>	
Cuckney CofE (Controlled) Primary	Mrs Margaret Jean Lovell
Ranskill Primary	Mr David Michael Spencer
<b>GEDLING</b>	
Coppice Farm Primary	Mrs Alison Jane Hirst

<b>MANSFIELD</b>	
Mansfield St Peter's CofE VA Primary	Mrs Christine Bacon
<b>NEWARK</b>	
The Mount CofE VC Primary School	Mr Richard Haig
<b>RUSHCLIFFE</b>	
Orston Primary	Mr Liam Quegan

6. The reappointment of an Authority governor, which is made subject to the completion of appropriate checks, is listed below

#### **Reappointments**

<b>RUSHCLIFFE</b>	
The South Wolds Academy and Sixth Form	Councillor John Cottee

#### **Other Options Considered**

7. Nottinghamshire County Council's strategy for recruiting and retaining school governors includes the re-appointment of existing governors. The County Council sees many advantages in retaining experienced governors and actively seeks to encourage governors approaching their end of term of office to stand again either in the same school or in a different school. The appointments made ensure the retention and supply of experienced governors.

#### **Reason/s for Recommendation/s**

8. The report is for noting only.

#### **Statutory and Policy Implications**

9. This report has been compiled after consideration of implications in respect of crime and disorder, finance, human resources, human rights, the NHS Constitution (public health services), the public sector equality duty, safeguarding of children and adults at risk, service users, sustainability and the environment and ways of working and where such implications are material they are described below. Appropriate consultation has been undertaken and advice sought on these issues as required.

#### **RECOMMENDATION/S**

- 1) That the Committee notes the appointment of Local Authority governors and the reappointment of an Authority governor to school governing bodies during the period 1 June to 31 July 2016 as listed in paragraphs 5 and 6.

**Marion Clay**  
**Acting Service Director, Education Standards and Inclusion**

**For any enquiries about this report please contact:**

Jane Mansell  
Senior Professional Practitioner, Governor Services  
T: 07860 597832/0115 8040628  
E: jane.mansell@nottsc.gov.uk

**Constitutional Comments**

10. As this report is for noting only, no Constitutional Comments are required.

**Financial Comments (TMR 28/08/16)**

11. As this report is for noting only, no Financial Comments are required.

**Background Papers and Published Documents**

None.

**Electoral Division(s) and Member(s) Affected**

Sutton in Ashfield North	Cllr Jason Zadrozny
Tuxford	Cllr John Ogle
Misterton	Cllr Liz Yates
Arnold North	Cllr Pauline Allan and Cllr Michael Payne
Mansfield East	Cllr Alan Bell and Cllr Colleen Harwood
Newark West	Cllr Tony Roberts
Bingham	Cllr Francis Purdue-Horan
Keyworth	Cllr John Cottey

C0876



**19 September 2016****Agenda Item: 10**

## **REPORT OF CORPORATE DIRECTOR, RESOURCES WORK PROGRAMME**

### **Purpose of the Report**

1. To consider the Committee's work programme for 2016-17.

### **Information and Advice**

2. The County Council requires each committee to maintain a work programme. The work programme will assist the management of the committee's agenda, the scheduling of the committee's business and forward planning. The work programme will be updated and reviewed at each pre-agenda meeting and committee meeting. Any member of the committee is able to suggest items for possible inclusion.
3. The attached work programme has been drafted in consultation with the Chairman and Vice-Chairman, and includes items which can be anticipated at the present time. Other items will be added to the programme as they are identified.
4. As part of the transparency introduced by the new committee arrangements, committees are expected to review day to day operational decisions made by officers using their delegated powers. It is anticipated that the committee will wish to commission periodic reports on such decisions. The committee is therefore requested to identify activities on which it would like to receive reports for inclusion in the work programme. It may be that the presentations about activities in the committee's remit will help to inform this.

### **Other Options Considered**

4. None.

### **Reason for Recommendation**

5. To assist the committee in preparing its work programme.



## **Statutory and Policy Implications**

6. This report has been compiled after consideration of implications in respect of finance, equal opportunities, human resources, crime and disorder, human rights, the safeguarding of children, sustainability and the environment and those using the service and where such implications are material they are described below. Appropriate consultation has been undertaken and advice sought on these issues as required.

## **RECOMMENDATION**

That the committee's work programme be noted and consideration be given to any changes which the committee wishes to make

**Jayne Francis-Ward**  
**Corporate Director, Resources**

**For any enquiries about this report please contact:**

Alison Fawley  
Democratic Services Officer  
T: 0115 993 2534  
E: [alison.fawley@nottsc.gov.uk](mailto:alison.fawley@nottsc.gov.uk)

## **Constitutional Comments (HD)**

7. The Committee has authority to consider the matters set out in this report by virtue of its terms of reference.

## **Financial Comments (NS)**

8. There are no direct financial implications arising from the contents of this report. Any future reports to Committee on operational activities and officer working groups, will contain relevant financial information and comments.

## **Background Papers**

None

## **Electoral Division(s) and Member(s) Affected**

All.

## **CHILDREN & YOUNG PEOPLE'S COMMITTEE - WORK PROGRAMME 2016-17**

<b>REPORT TITLE</b>	<b>BRIEF SUMMARY OF AGENDA ITEM</b>	<b>LEAD OFFICER</b>	<b>REPORT AUTHOR</b>
<b>17 October 2016</b>			
School Capital Programme progress report	Six month update report	Jas Hundal	Martin Williams/Sara Williams
Small schools		Marion Clay	Marion Clay
Nottinghamshire review of arrangements for Special Educational Needs and Disability – final report		Marion Clay	Jill Norman/ Matt Rooney
Nottinghamshire Code of Conduct for issuing fines for pupil absences – impact of amendment to threshold		Derek Higon	Denis McCarthy
Tackling Child Poverty in Nottinghamshire		Derek Higon	Rachel Clark
Child Sexual Exploitation and Children Missing from Home and Care: annual report 2015/16		Steve Edwards	Pam Rosseter/Terri Johnson
Update on Youth Service Countywide team		Derek Higon	Pom Bhogal/ Chris Warren
<b>21 November 2016</b>			
Performance reporting (Quarter 2 2016/17) – Services for Children and Young People	Quarterly performance report	Celia Morris	Celia Morris/Bridget Innes
Nottinghamshire Early Years Improvement Plan 2015-17 – six month update	Will include update on 30 hours free childcare	Derek Higon	Irene Kakoullis
Nottinghamshire Safeguarding Children Board annual report 2015/16	Annual report	Steve Edwards	Pam Rosseter
A Strategy for Closing the Educational Gaps in Nottinghamshire	Six monthly review report	Marion Clay	Marion Clay/Janeen Parker
Children, Young People and Families Plan 2016-18 – six-month update	Six monthly update report	Derek Higon	Chris Jones
Troubled Families Programme in Nottinghamshire – six-month update	Six monthly update report	Derek Higon	Laurence Jones
<b>19 December 2016</b>			
Nottinghamshire Outstanding Achievement 4Uth Award 2016	Annual update report	Derek Higon	Chris Warren/ Pom Bhogal
Children & Young People's Mental Health &	Six-monthly report	Kate Allen	Kate Allen/ Lucy Peel

REPORT TITLE	BRIEF SUMMARY OF AGENDA ITEM	LEAD OFFICER	REPORT AUTHOR
Wellbeing Transformation Plan			
Review of the Schools Swimming Service offer		Derek Higton	Chris Warren
National Children and Adult Services Conference 2016	Report back on attendance	Colin Pettigrew	Colin Pettigrew
Local Authority governor appointments and re-appointments to school governing bodies	For information	Marion Clay	Jane Mansell
<b>16 January 2017</b>			
Financial support for students in post-16 education	Annual determination	Marion Clay	Dave Litchfield
Rota Visits to children's homes: Autumn 2016	Six monthly report	Steve Edwards	Vonny Senogles
Child Sexual Exploitation and Children Missing from Home and Care: update	Six-monthly update	Steve Edwards	Pam Rosseter/Terri Johnson
<b>20 February 2017</b>			
Performance reporting (Quarter 3 2016/17) – Services for Children and Young People	Quarterly performance report	Celia Morris	Celia Morris/Bridget Innes
Nottinghamshire School Admission Arrangements 2018/19		Marion Clay	Mary Kiely
Schools Forum and Education Trust Board officer group report	Annual officer group report	Marion Clay	Marion Clay
<b>20 March 2017</b>			
National Minimum Fostering Allowances and Fees for Foster Carers and new carer payment model	Annual determination	Steve Edwards	Naomi Sills/ Tara Pasque
Performance figures for Nottinghamshire schools and academies – academic year 2015/16	For information	Marion Clay	Marion Clay
Key Stage 2 performance – analysis and actions	For information	Marion Clay	Marion Clay
National Children and Adult Services Conference 2017	For decision	Derek Higton	Philippa Milbourne
Local Authority governor appointments and re-appointments to school governing bodies	For information	Marion Clay	Jane Mansell
Changes to special school nursing provision – update		Kate Allen	Catherine O'Byrne

REPORT TITLE	BRIEF SUMMARY OF AGENDA ITEM	LEAD OFFICER	REPORT AUTHOR
<b>24 April 2017</b>			
Exceptional payments for school clothing and footwear 2017/18	Annual determination	Marion Clay	Marion Clay/Linda Foster
School Capital Programme progress report	Six month update report	Jas Hundal	Martin Williams/Sara Williams
Children's Workforce Health Check Survey 2016-17		Derek Highton	Liz Maslen
<b>19 June 2017</b>			
Performance reporting (Quarter 4 2016/17) – Services for Children and Young People	Annual performance report	Celia Morris	David Gilbert/Bridget Innes
Children & Young People's Mental Health & Wellbeing Transformation Plan	Six-monthly report	Kate Allen	Kate Allen/Lucy Peel
A Strategy for Closing the Educational Gaps in Nottinghamshire	Six monthly review report	Marion Clay	Marion Clay/Janeen Parker
Looked After Children and Care Leavers Strategy 2015-18 – annual progress report	Annual report	Steve Edwards	Dawn Godfrey
Principal Child and Family Social Worker - annual report 2016		Steve Edwards	Diana Bentley
Children, Young People and Families Plan 2016-18 – six-month update	Six monthly update report	Derek Highton	Chris Jones
Troubled Families Programme in Nottinghamshire – six-month update	Six monthly update report	Derek Highton	Laurence Jones
Local Authority governor appointments and re-appointments to school governing bodies	For information	Marion Clay	Jane Mansell
<b>17 July 2017</b>			
Rota visits to children's homes – Spring 2017	Six monthly report	Steve Edwards	Vonny Senogles
Child Sexual Exploitation and Children Missing from Home and Care: update	Six-monthly update	Steve Edwards	Pam Rosseter/Terri Johnson
Nottinghamshire Childcare Sufficiency Assessment 2017		Derek Highton	Laurence Jones
Nottinghamshire Early Years Improvement Plan 2015-17 – annual update		Derek Highton	Irene Kakoullis
Members' visit to Outdoor & Environmental Education residential centres	For decision	Derek Highton	Phil Baker

REPORT TITLE	BRIEF SUMMARY OF AGENDA ITEM	LEAD OFFICER	REPORT AUTHOR
To be placed			