

Nottinghamshire County Council

2015

Childcare Sufficiency Assessment

Nottinghamshire Early Years & Early Intervention Service

www.nottinghamshire.gov.uk

CONTENTS PAGE

- 1. Introduction**
- 2. Supply of childcare**
- 3. Cost of childcare**
- 4. Quality and sustainability**
- 5. Free early education for two-year-olds**
- 6. Children with a disability**
- 7. Parental demand for childcare**
- 8. District data and Information**
 - a. Ashfield**
 - b. Bassetlaw**
 - c. Broxtowe**
 - d. Gedling**
 - e. Mansfield**
 - f. Newark and Sherwood**
 - g. Rushcliffe**

Appendix 1 Census Data

1. Introduction

The Early Years and Early Intervention Service, part of the Children, Families and Cultural Services within Nottinghamshire County Council is taking the lead on the sufficiency and sustainability of the childcare market in Nottinghamshire. High quality, accessible and affordable childcare and early education provision helps parents to ensure their children have the best possible start in life and supports children to be ready to start school.

Early years and childcare organisations in Nottinghamshire deliver the infrastructure to support families back in to work and are at the heart of communities in Nottinghamshire. These organisations range from individual childminders to large maintained schools and academies; from committee run preschools and out of school clubs to standalone, local and national chains day nurseries. The local authority acts to manage this market, via statutory duties contained in the Children Act 2006 and statutory guidance issued by the Department for Education.

The early education and childcare statutory guidance for local authorities issued in September 2014 contains details of eligibility to the entitlement to early education for around the 40% most disadvantaged two-year-olds. There are new elements to the guidance relating to:

- The introduction of childminder agencies
- How LA's discharge their duty to secure early education for two-, three- and four-year-olds.
- The provision of information, advice and training to childcare providers; and
- Early education providers who do not actively promote fundamental British values.

In 2014 the role of LA's changed, as Government made Ofsted the sole arbiter of quality. LA focus has shifted to ensuring that all eligible children are able to take up their early education place and that weaker providers take steps to improve the quality of their provision. Nottinghamshire County Council continues to take the strategic lead by planning, supporting and commissioning early education and childcare.

This Childcare Sufficiency Assessment measures the nature and extent of the demand and supply of childcare in Nottinghamshire. It identifies where there are gaps in the childcare market and informs a market management plan. Government regards the following as the benchmark of sufficiency:

- There are sufficient childcare places overall in each locally defined sub area, in the case of Nottinghamshire this is at District level.
- Provision is flexible and accessible to fit in with working patterns for parents

- There is a range of childcare provision that is affordable and of a high quality
- Provision is inclusive to meet particular needs of childcare with a disability or special educational need
- Childcare is sustainable.

Childcare sufficiency is not just about having enough childcare places to meet the needs of working and training parents, it is about ensuring the provision is of a high quality, it improves the outcomes for children, sets the foundations for school readiness, narrows the gap in attainment and is inclusive and flexible to meet families' needs. The provision needs to ensure continuity of care by being a sustainable business with affordable fees. A sufficient, sustainable, quality childcare market underpins the poverty agenda, supports local economic development and the wider Early Help strategies.

2. Supply of Childcare

Nottinghamshire continues to benefit from a wide range of registered early years and childcare provision.

Since the 2014 sufficiency assessment, there has been a 6% drop in the number of registered childminders from 835 to 782. This drop has been significantly less dramatic in Nottinghamshire than elsewhere in the country. Many more Nottinghamshire childminders are providing funded places for eligible two year olds, with some retaining these children for their free early education at age 3 and 4. In 2013 only 24 childminders were providing places for funded children. By 2014 this had risen to 95 childminders and in spring term 2015 there were 167 childminders with funded children.

The number of out of school clubs listed with the Families Information Service (FIS) has fallen by only five across the entire county. There are also many school-run clubs, which are exempt from separate Ofsted registration. As these clubs are only available to pupils at the school, the provision is not always advertised with FIS.

There has been a net gain of one day nursery or full daycare provider in the county in the last year, with both Ashfield and Gedling gaining two more nurseries over the year. Overall there is also one more pre-school in the county.

There are five fewer crèches registered with Ofsted in 2015, which we assess to be due to more two-year-olds accessing other registered provision for a free funded place, resulting in much lower numbers of children attending sessional crèche provision. There were nine fewer home child carers in 2015.

Nottinghamshire supply of registered childcare providers by district 2015

TYPE OF CARE PROVIDED	ASHFIELD	BASSETLAW	BROXTOWE	GEDLING	MANSFIELD	NEWARK & SHERWOOD	RUSHCLIFFE	TOTAL
CHILDMINDER	119	84	104	174	98	110	93	782
OUT OF SCHOOL CLUBS	7	9	17	19	14	15	22	103
DAY NURSERY /FULL DAYCARE	18	21	27	22	19	27	35	169
PRE-SCHOOL	10	16	16	18	3	17	28	110
CRECHE	0	7	3	0	0	0	0	10
HOME CHILDCARER	12	1	11	10	4	14	27	79
TOTAL	166	138	178	243	138	183	205	1253

Source: Nottinghamshire Families Information Service database of registered childcare providers as at 05/03/2015

Comparing new childcare registrations with those providers who have closed or resigned, there are 70 fewer providers in Nottinghamshire (including childminders) in 2015. The total number of childcare places by type is detailed in the district information, later in the report. Countywide, there are 378 fewer places available with childminders this year.

There has also been a reduction in the number of other childcare places available, though this is attributable to the closure of 5 sessional crèches, which were registered for large numbers of children, but only occasional care was offered, for purposes such as training courses etc. There has actually been an increase in the number of registered early years and childcare places which meet the needs of working parents.

3. Cost of Childcare

The average cost of a 25 hour place in Nottinghamshire for a 2 year old child has increased by 13% in the last year to £127, compared with a national rise of 5%. The average Nottinghamshire childcare place is more expensive than both the regional or national average cost for two-year-olds. This is influenced by the relatively vibrant market in Rushcliffe district, where the average cost for a nursery place is £141. Rushcliffe district ranks 331st of 354 local authorities on a national deprivation scale. All other districts in the county have lower average costs than both the east midlands and national average costs. However, with over 2,100 two- year-olds benefitting from 15 hours of free early education in Nottinghamshire, a large number of families will actually be paying less for their childcare. The cheapest nursery place for a 2 year old in Nottinghamshire is £81.25 for 25 hours of care in Mansfield district.

Childminder places cost significantly less than in other regional authorities and have actually fallen in the last year by 2%. Nationally there has been an increase of 4%. Rushcliffe is again the most expensive district in Nottinghamshire, with average costs of £97 for 25 hours for a two-year-old, with Ashfield at £75 for the same age child.

After school clubs costs have fallen to £37 for 15 hours of care in an out of school club. This may be to a number of out of school clubs now being school run, with subsidised childcare costs on offer. Out of school care in a group setting is most expensive in Rushcliffe and least expensive in Mansfield. More typically, childminder after school costs have risen 3% to £54. Childminder after school care is most expensive in Newark and Sherwood, with Broxtowe and Gedling having the lowest costs.

Average weekly childcare costs 2015

Area	Nursery 25 Hours (under 2) £	Nursery 25 Hours (2 & over) £	Childminder 25 Hours (under 2) £	Childminder 25 Hours (2 & over) £	After School 15 Hours £	Childminder After School 15 Hours £
Nottinghamshire	127	127	90	90	37	54
East Midlands	119	108	92	91	48	72
England	117	112	105	104	48	65
Britain	115	110	104	103	48	65

Source: Family and Childcare Trust Childcare Costs Survey 2015

Average holiday childcare costs in Nottinghamshire have remained the same in the last 12 months. Nationally costs have risen overall by 1.7%, though maintained provision has fallen by 3.1% and PVI provision has risen by 2.7%. The majority of holiday childcare is delivered by the PVI sector, both nationally and locally. PVI holiday childcare in Nottinghamshire is considerably cheaper than in neighbouring authorities. The majority of Nottinghamshire holiday childcare is delivered by voluntary and charitable not-for-profit organisations, which accounts for the lower charges.

Average weekly holiday childcare costs 2014-15

Area	Maintained (school, local authority) sector holiday club or play scheme £	Private, voluntary and independent sector holiday club or play scheme £
Nottinghamshire 2014	96	110
East Midlands 2014	101	135
England 2014	99	121
Britain 2014	96	119

Source: Family and Childcare Trust Holiday Childcare Costs Survey 2014

Funding from central government for the free entitlement to early education for three and four year olds is applied using the Early Years Single Funding Formula (EYSFF) and has been at the same rate since 2009. In Nottinghamshire this equates to £3.77 per hour for 570 hours per year taken either in a maintained nursery or with a PVI provider, prior to commencing school full time. Of the 9 LA's in the east midlands, only two fund at a rate lower than Nottinghamshire. Despite lobbying both locally and nationally the flat rate has not changed, leaving a number of providers with concerns about sustainability of the free offer. Schools forum will consider proposals on the EYSFF rate in June 2015.

Government are introducing Early Years Pupil Premium (EYPP) from 1 April 2015, which will provide an additional £0.55 per hour for the most disadvantaged 3 and 4 year olds accessing their free early education place in PVI and maintained provision. Providers, including schools, will be expected to demonstrate during Ofsted inspection how they have used EYPP to improve attainment for those pupils attracting the additional funding. Nottinghamshire County Council plans to hold a series of sessions to encourage parents to apply for the additional funding and to support providers to make sure the funding makes a difference to those children.

In contrast, the hourly rate paid in Nottinghamshire for around 3,500 disadvantaged two year olds accessing 15 hours of free early education and childcare a week is the 2nd highest in the east midlands at £5.09. Two year olds do not qualify for the EYPP. Many working parents of two-year olds eligible for the free 15 hours of childcare on low incomes will benefit from savings to their childcare costs by taking up the offer of a free place.

4. Quality and Sustainability of Ofsted Registered Childcare Provision

As described in the introduction, with Ofsted now being the sole arbiter of quality in the sector, the local authority continues to support and challenge early years and childcare providers rated as less than good. This revised support is delivered via a quality improvement team, including early years specialist teachers (EYST) and professional practitioners. The focus is on providers rated as inadequate, requires improvement or satisfactory, assisting them to meet the improvements identified on inspection by Ofsted and raise outcomes on re-inspection. Providers rated good or outstanding by Ofsted receive only light-touch support, in the form of an annual conversation visit to focusing on the providers' Self Evaluation Form (SEF).

In Nottinghamshire, we have a few small local chains of provision and very few national chain providers. The majority are either owner/manager or voluntary run settings. NCC provides business advice and support to help settings manage the sustainability of their provision via a dedicated officer resource.

Type	Total providers	% Outstanding	% Good	% Satisfactory/ Requires Improvement	% Inadequate	% NYI	% Not Met	% Met
Childminder	803	5%	63%	12%	1%	10%	4%	5%
Day Nursery	157	19%	62%	10%	0%	8%	0%	0%
Pre-School	114	8%	75%	11%	1%	4%	0%	0%

Source: Ofsted inspection outcomes spring term 2015

NYI is Not Yet Inspected

Of the 978 setting inspected 769 (79%) have an outcome of outcomes Outstanding or Good

The current Ofsted inspection cycle runs from September 2013 to August 2016. In this inspection cycle, the rating of satisfactory has changed to "requires improvement" to bring judgements into line with school inspections. Many providers will carry the satisfactory rating until re-inspected in the current cycle.

Where NYI, Met or Not Met is indicated, this is due to either;

- this is a new provider, registered but awaiting inspection, therefore the Ofsted rating is not known; or
- there were no children on roll or present at the time of the inspection; or
- the provider moved into the area and no inspection is available at the current premises.

From September 2013 any newly registered providers have been allowed by DfE to be added to the NCC directory of providers and claim the free entitlement to early education funding for 2, 3 and 4 year olds, whilst awaiting their Ofsted inspection outcome. Any registered provider rated as inadequate will be suspended from the NCC directory of providers until their quality improves, on re-inspection by Ofsted. Parents of any children attending such provision will be supported to different provider.

5. Free Early Education for disadvantaged two- year-olds

Government introduced the free entitlement to early education for the 20% most disadvantaged two year olds from September 2013. The anticipated number of eligible children in Nottinghamshire was 1,910. 76% of eligible children accessed a place during the first full year of operation. From September 2014 the programme was increased to include the 40% most disadvantaged children, with DfE indicating that 3460 children could access a place in the county. Take up in spring term 2015 stands at just over 60%, with numbers increasing weekly.

A colourful marketing campaign is running across the county to encourage take up. Research has shown some parents are cautious of children starting a place in the term after their child's second birthday, as they feel their child is too young. We are suggesting that children could start on fewer than the total 15 hours initially, and gradually increase those hours as the child settles. Some parents seem happier to let their child start in the term when they have their third birthday, when the child is a little older. We are encouraging schools to look at how they may be able to extend their nursery offer to include these eligible "rising threes" for one additional term of early education.

The Early Years and Early Intervention Service have undertaken a detailed assessment of the areas where these eligible children live and we have used the DfE 2 year olds capital grant to create places in those communities with large numbers of eligible children but little provision available. This has resulted in over 1400 new places being created in the PVI sector. An additional 180 places will be available on school and children's centre sites in 2015. There are sufficient early years places available in Nottinghamshire for eligible two-year-olds. There will be continuing promotional activity to encourage the take up of places by eligible families, as from 2015 NCC funding from DfE will be based upon actual take-up of places.

6. Children with a Disability

Nottinghamshire County Council continues to provide additional support to children accessing their free entitlement place, or a childcare place whilst the parents are working or training for work. Known locally as DCATCH (Disabled Children Access to Childcare) the programme has refocused its eligibility criteria but continues to provide vital assistance to providers to help them meet the needs of these children. Generally the funding ensures disabled children can access mainstream childcare provision with their peers via additional

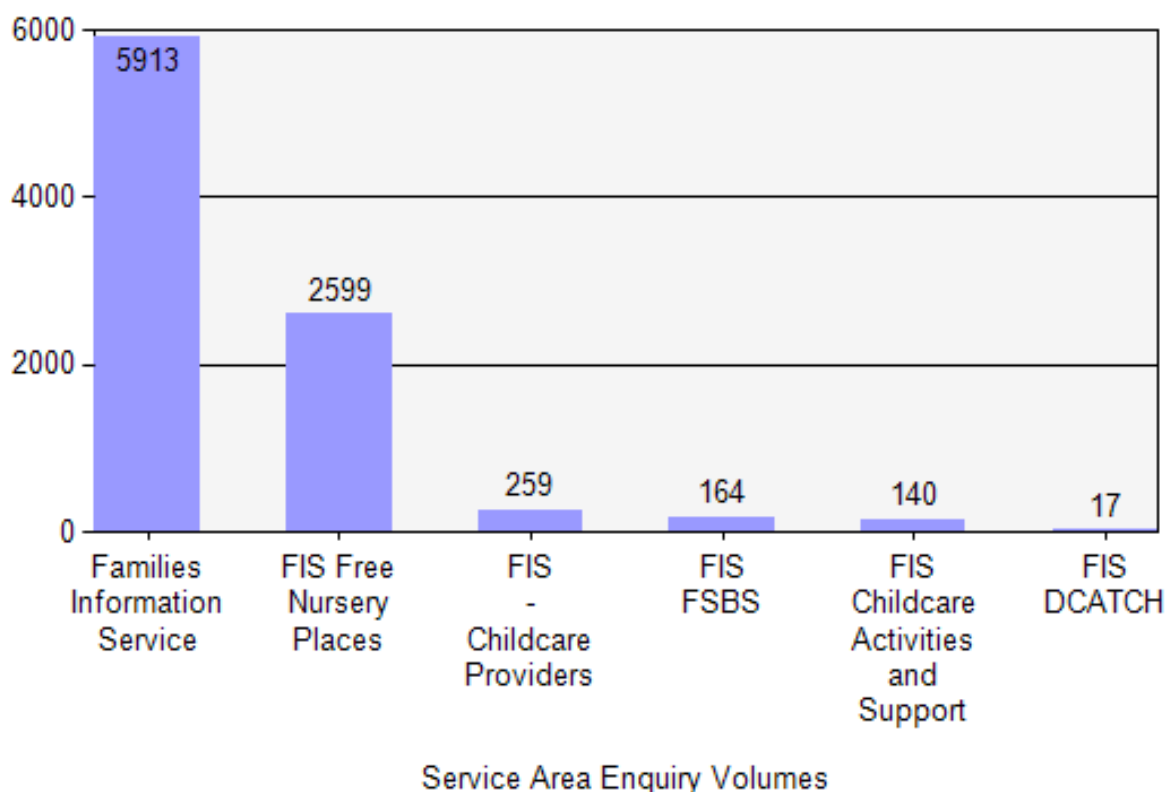
support or with specialist equipment. Training for staff to meet the needs of the child on commencement of their place with a provider removes the need for ongoing support.

The large uptake of funded two year old places in 2013-14 by children with disabilities has led to a significant increase in applications for DCATCH support, to meet the needs of these children. As these children graduate to access early years provision at age three, providers are requesting DCATCH funding. More children requiring more support and entering the early years programme earlier has led to an increase in both the amount of funding requested and the number of children supported in 2014-15.

NCC provides support to providers caring for disabled children via SENCO networks and a specialist children's disabilities advisor in the three localities of Ashfield/Mansfield, Bassetlaw/Newark and Sherwood and Broxtowe/Gedling/Rushcliffe. Individual providers also receive support from the team of Early Years Specialist Teachers linked to each of the seven districts of Nottinghamshire.

7. Parental Demand for Childcare

Parents looking for childcare can visit the Families Information Service on the NCC website, or contact them on 0300 500 8080. Children's centres also assist parents to find childcare in their area. Over 9,000 requests for FIS services have been made to the NCC customer service centre for childcare in 2014/15. Parents are encouraged to check eligibility for a two-year-old place on line via the NCC website. However, many like to speak to an advisor and almost 2,600 calls have been made to the CSC in the last year by parents checking eligibility for a two-year-old funded place,



Childcare is available both in late evenings and early mornings in all districts, though the majority of day nurseries do operate from 7.30am until 6.00pm. Childminders offer the most flexibility, with some offering childcare during evenings, weekends, bank holidays and overnight. General users of these services are shift workers and those caring for children of those working for the police or health service. There are 79 home childcarers in the county, providing a service in the child's own home, which also aids parents who work flexible hours. Families of disabled children also use home childcarers.

To date we have no Childminder Agencies registered in Nottinghamshire, though there is an Ofsted registered agency in the city, which may have county childminders on their books.

We are not aware of any parents unable to find childcare or an early years place, though we recognise that not all parents may get their first choice of provider. Parents may not be able to find exactly the pattern of care they require, but assistance from FIS helps to address their needs.

The new Early Years Pupil Premium commencing in April 2015 and the tax-free childcare scheme due to be launched in September 2015 will be promoted to parents in the coming year.

8. District Information

a. Ashfield

Ashfield District is situated in north-west Nottinghamshire. Just north of Nottingham City it has excellent communications corridors through the A38 and junctions 27 and 28 of the M1, also boasting close proximity to East Midlands Airport. The Robin Hood Line has four stations in Ashfield connecting to Nottingham City, Mansfield and Worksop. Ashfield comprises three large settlements Kirkby-in-Ashfield, (population 25,030), Sutton-in-Ashfield, (population 41,265), and Hucknall, (population 29,210) alongside the rural parishes of Annesley, Felley and Selston. The 10,994ha district as a whole is home to 108,700 residents.

Childcare Information

Ashfield has the following breakdown of childcare providers across the district;

TYPE OF CHILDCARE	ASHFIELD 2015 (change from 2014)
CHILDMINDER	119 (-5)
HOME CHILDCARER	12 (+2)
TOTAL HOME-BASED	131 (-3)
OUT OF SCHOOL CLUBS	7 (-1)
CRECHE	0 (=)
DAY NURSERY/ FULL DAYCARE	18 (+2)
PRE-SCHOOL PLAYGROUP	10 (+ 1)
TOTAL GROUP CARE	35 (+2)

There is a good range of provision across this district, offering parental choice for the type of childcare place used. There is a high number of maintained nurseries for 3 and 4 year olds across Ashfield and a low number of PVI-run pre-schools. High levels of economic disadvantage across the District presents additional sustainability challenges for PVI childcare businesses. The increase in free early education places for two-year-olds created by capital and trajectory funding with existing provision has helped sufficiency in the district. In 2014-15 new provision for two-year-olds was developed in Huthwaite and Kirkby in Ashfield, which is being run by schools.

Turnover of providers has been relatively low, with some large group care closing, but smaller providers opening. This has resulted in a net loss of actual places available. There are 48 fewer childcare places with childminders in Ashfield and 62 fewer group childcare places.

Quality

The quality of Ashfield's registered providers currently on the Nottinghamshire directory of providers of free early education is as below;

	Total	Outstanding & Good	%	Requires Imp/ Satisfactory	Inadequate	Not Yet Inspected
Childminders	20	18	90%	1	0	1
Day Nurseries	16	13	81%	2	0	1
Preschools	10	9	90%	1	0	0
Total	46	40	87%	4	0	2

Targeted work is underway to improve quality to at least good for all providers with funded children. A "getting to good" Ofsted development programme is underway to improve quality on re-inspection.

Our Action Plan for Ashfield District in 2015/16

Identified Issue	Action/Solution
The number of places available for two year olds in Ashfield.	New places for two year olds will be delivered from the Kirkby West and Central children's centre in 2015, following the appointment of a provider from a tender process
	A small number of infant and primary schools are considering admitting funded two year olds as "rising threes" (i.e. children who become age three during that term) for one term or lowering their admissions age, which will enable them to admit two-year-olds from September 2015. These schools will be supported by NCC through this process.

b. Bassetlaw

The District of Bassetlaw is situated in North Nottinghamshire and boasts thousands of acres of countryside, parkland and ancient woodlands. Bassetlaw has two main population centres, the market towns of Worksop and Retford, which are home to the majority of its 107,713 residents.

Childcare Information

Bassetlaw District has the following breakdown of childcare providers across the District.

TYPE OF CHILDCARE	BASSETLAW 2015 (change from 2014)
CHILDMINDER	84 (-15)
HOME CHILDCARER	1 (-3)
TOTAL HOME-BASED CARE	85 (-18)
CRÈCHE	7 (-1)
DAY NURSERY/FULL DAY CARE	21 (-1)
PRE-SCHOOL PLAYGROUP	16 (+1)
TOTAL GROUP CARE	44 (-1)

While the district appears to have a good range of provision in the rural centres, there are challenges relating to the rural nature of the District. Some families living in the edges of the District access provision across the borders in Lincolnshire, Doncaster, Sheffield and Rotherham. The rural nature of the District impacts upon the sustainability of group provision, with childminders providing the only childcare in some very rural areas.

Turnover of providers has been relatively low for group care providers, but high for childminders. There are 77 fewer childcare places with childminders in Bassetlaw but only 22 fewer group childcare places.

Quality

The quality of Bassetlaw's registered providers currently on the Nottinghamshire directory of providers of free early education is as below;

	Total	Outstanding & Good	%	Requires Imp/ Satisfactory	Inadequate	Not Yet Inspected
Childminders	12	12	100%	0	0	0
Day Nurseries	16	13	81%	2	0	1
Preschools	12	10	83%	2	0	0
Total	40	35	88%	4	0	1

Targeted work is underway to improve quality to at least good for all providers with funded children. A "getting to good" Ofsted development programme is underway to improve quality on re-inspection

Our Action Plan for Bassetlaw District in 2015/16

Identified Issue	Action/Solution
Harworth and Bircotes in the north of the District have high numbers of eligible two year olds but there is a lack of capacity in the existing provision.	Plans are in place to relocate the preschool to a modular building will increase the times of day and number of sessions available for 2, 3 and 4 year olds.
The general number of places available for two year olds in Bassetlaw.	Rhodesia has a demand for places for two year olds and there is a tender process in place to appoint a provider to deliver sessional care from the children's centre building on the school site.
	Mattersey primary school has lowered its admissions age to 3 and is looking to offer places to "rising threes" in summer 2015, with a view to admitting eligible funded two-

	year-olds to their free entitlement from Autumn 2015.
	Manton has high numbers of eligible 2 year olds, though families seem content to access provision nearby, en route to the town centre.
	Bassetlaw is home to one of the DfE pilot schools, taking two year olds. Sir Edmund Hillary Primary School has a growing number of two year olds attending their setting and are now DfE Two-year-old Champions for Nottinghamshire.

c. Broxtowe

The Borough of Broxtowe lies to the west of the City of Nottingham and is bounded by the River Trent on the south and the River Erewash on the west. There are four main towns Beeston, Stapleford, Kimberley and Eastwood - each with its own character and individuality. The population of Broxtowe is approximately 101,656.

Childcare Information

Broxtowe has the following breakdown of childcare providers across the District.

TYPE OF CHILDCARE	Broxtowe (change from 2014)
CHILDMINDER	104 (-7)
HOME CHILDCARER	11 (+1)
Total Home Based Care	115 (-6)
OUT OF SCHOOL CLUBS	17 (-1)
CRECHE	3 (=)
DAY NURSERY/ FULL DAYCARE	27 (=)
PRE-SCHOOL PLAYGROUP	16 (=)
Total Group Care	63 (-1)

Broxtowe District has a good range of childcare places across the area and due to the Districts close proximity to the City families can choose to use childcare across the City border. There are a high number of families working at the University and QMC who use childcare in the Broxtowe District. Children eligible for early education for two-year-olds who live in City can access provision in Broxtowe District. There are cross border protocols in place to ensure there are enough places for all children requesting them.

Turnover of providers has been very low for group care providers, with only one out of school club closing during the year. However, there are 67 fewer childcare places with childminders in Broxtowe this year.

Quality

The quality of Broxtowe's registered providers currently on the Nottinghamshire directory of providers of free early education is as below;

	Total	Outstanding & Good	%	Requires Imp/ Satisfactory	Inadequate	Not Yet Inspected
Childminders	10	9	90%	0	1	0
Day Nurseries	25	20	80%	5	0	0
Preschools	15	12	80%	2	1	0
Total	50	41	82%	7	2	0

Targeted work is underway to improve quality to at least good for all providers with funded children. A "getting to good" Ofsted development programme is underway to improve quality on re-inspection.

Our Action Plan for Broxtowe District in 2015/16

Identified Issue	Action/Solution
Stapleford is the community with the highest number of eligible two year olds in Broxtowe.	PVI providers have been supported through capital and trajectory funding to expand their existing provision.
It is assessed that there is sufficient childcare in Broxtowe but some providers are separated from communities needing places by large roads, which are not easy to cross for parents with young children.	NCC would like to engage with schools who may be interested in admitting two-year-olds or "rising threes", to expand the choice for parents.

d. Gedling

The borough of Gedling is home to almost 112,000 people and covers an area of 46.3 sq. miles. The borough comprises the towns of Arnold and Carlton and the surrounding parishes. It borders Sherwood Forest to the north, the River Trent to the South East and the City of Nottingham to the South West. Children from this district access City provision, and City children attend County provision.

TYPE OF CHILDCARE	GEDLING (change from 2014)
CHILDMINDER	174 (-1)
HOME CHILDCARER	10 (-4)
TOTAL HOME BASE CARE	184 (-5)
OUT OF SCHOOL CLUBS	19 (-2)
CRECHE	0 (=)
DAY NURSERY/ FULL DAYCARE	22 (+2)
PRE-SCHOOL PLAYGROUP	18 (-1)
TOTAL GROUP BASED CARE	249 (-1)

Gedling District has a good range of childcare provision across the District and also has childcare providers who can offer City families childcare places. Gedling district has the highest number of child-minders in the County. Provision for 2 year olds has opened at Netherfield Primary, as part of the DfE pilots for places on school sites.

In this district, there has been a net gain in both the number of childminders and the number of childminder places over the year. With more group care opening than closing across the year, there are an additional 62 childcare places available in this district

Quality

The quality of Gedling's registered providers currently on the Nottinghamshire directory of providers of free early education is as below;

	Total	Outstanding & Good	%	Requires Imp/ Satisfactory	Inadequate	Not Yet Inspected
Childminders	26	26	100%	0	0	0
Day Nurseries	18	14	78%	2	0	2
Preschools	18	15	83%	3	0	0
Total	62	55	89%	5	0	2

Targeted work is underway to improve quality to at least good for all providers with funded children. A "getting to good" Ofsted development programme is underway to improve quality on re-inspection.

Our Action Plan for Gedling District in 2015/16

Identified Issue	Action/Solution
With the number of places remaining steady through the last 12 months in Gedling, we would aim to support settings to continue to expand and remain viable.	NCC are currently out to tender to appoint a childcare provider to deliver places for two year olds in Arnbrook Children's Centre in the district. It is hoped that places will be available later in 2015.
	There are fewer opportunities to develop places for two year olds in schools in Gedling, but NCC would be interested to work with any interested schools to increase the choice of provision for parents.

e. Mansfield

Mansfield District is a largely urban area in the North West of Nottinghamshire; Mansfield is home to a large, skilled workforce. The workforce is employed in a variety of sectors, providing a balanced economy. Mansfield town centre has grown to become the main retail and service centre for the North Midlands with over 350,000 people within a 30 minute drive. Mansfield has grown to be the largest town in Nottinghamshire with a population of 100,100 divided into 19 electoral wards.

TYPE OF CHILDCARE	MANSFIELD (change from 2014)
CHILDMINDER	98 (-7)
HOME CHILDCARER	4 (=)
TOTAL HOME-BASED CHILDCARE	102 (-7)
OUT OF SCHOOL CLUBS	14 (=)
CRECHE	0 (-4)
DAY NURSERY/ FULL DAYCARE	19 (+1)
PRE-SCHOOL PLAYGROUP	3 (=)
TOTAL GROUP BASED CARE	148 (-3)

The district appears to have a good range of provision, but provider numbers are small, given the population of the district. There is a high number of maintained places for 3 and 4 year olds across Mansfield hence the very small number of voluntary managed groups in the area. Economic disadvantage across the District can present additional sustainability challenges for new and existing private, voluntary and independent childcare businesses.

Two-year-old capital and trajectory funding has significantly increased the number of available places in Mansfield, compared to last year. This growth has been in the PVI sector.

Quality

The quality of Mansfield's registered providers currently on the Nottinghamshire directory of providers of free early education is as below;

	Total	Outstanding & Good	%	Requires Imp/ Satisfactory	Inadequate	Not Yet Inspected
Childminders	30	24	80	4	0	2
Day Nurseries	18	16	89%	2	0	2
Preschools	1	1	100%	0	0	0
Total	49	41	83%	4	0	2

Targeted work is underway to improve quality to at least good for all providers with funded children. A "getting to good" Ofsted development programme is underway to improve quality on re-inspection

Our Action Plan for Mansfield District in 2015/16

Identified Issue	Action/Solution
Due to the high numbers of two-year-olds eligible for a free childcare place in Mansfield District it has long been an area of concern for the expansion of places.	A number of new group care providers have opened recently to serve Newgate Lane and Ladybrook.
	The capital and trajectory grant funding has significantly increased the number of places available in existing settings in both Mansfield Woodhouse and Warsop.
Providers need to be commissioned to deliver places in this district.	NCC are commissioning providers to establish provision in Bellamy Road and Forest Town, targeted at two-year-olds in the children's centre buildings early in 2015/16.
Turnover of providers in Mansfield has been affected by the cancellation of sessional crèches' registration at children's centres	New registrations have resulted in 72 new childcare places for under-fives in Mansfield.

e. Newark and Sherwood

Newark and Sherwood is the largest district in Nottinghamshire and has a resident population of approximately 112,000 people. The district is made up of several distinct areas: the affluent market towns of Newark-on-Trent to the southeast and Southwell to the southwest which serve as the main shopping and service centres for the surrounding rural areas; the sparsely populated areas in the central and northern parts of the district, and the old mining areas to the north-western part of the district with relatively high levels of deprivation.

Business and enterprise has flourished in the district with a substantial increase in the number of VAT registered businesses. Further prospects for further economic development are excellent with a successful Growth Point bid that is estimated to generate over £1 billion of new investment forming the centre piece of a range of major developments across the district. The housing development planned as part of the Growth Point bid is significant across the South of Newark.

TYPE OF CHILDCARE	NEWARK AND SHERWOOD (change from 2014)
CHILDMINDER	110 (-5)
HOME CHILDCARER	14 (-1)
TOTAL HOME BASE CARE	124 (-6)
OUT OF SCHOOL CLUBS	15 (-1)
CRECHE	0 (=)
DAY NURSERY/ FULL DAYCARE	27 (-2)
PRE-SCHOOL PLAYGROUP	17 (-2)
TOTAL GROUP BASED CARE	59 (-5)

There is a good mix of childcare provision across the district; however the bulk of provision tends to be concentrated around the Newark Town area and the edges of the district such as Clipstone and Southwell. The provision is balanced across Day Nursery, Pre School provision and Child minders in the more rural and geographically isolated areas. There is a regular turnover of providers, with organisations changing hands and having a new registration with Ofsted.

Quality

The quality of Newark and Sherwood's registered providers currently on the Nottinghamshire directory of providers of free early education is as below;

	Total	Outstanding & Good	%	Requires Imp/ Satisfactory	Inadequate	Not Yet Inspected
Childminders	26	22	85%	4	0	1
Day Nurseries	25	20	80%	3	0	2
Preschools	19	15	79%	4	0	0
Total	71	57	80%	11	0	3

Targeted work is underway to improve quality to at least good for all providers with funded children. A "getting to good" Ofsted development programme is underway to improve quality on re-inspection.

Our Action Plan for Newark and Sherwood district in 2015/16

Identified Issue	Action/Solution
There is a lack of capacity in Ollerton	Capital work has been agreed at Ollerton Primary School to expand provision in that community. A childcare provider will be appointed via a tender to deliver places for funded two-year-olds on the school site.
Blidworth and Bilsthorpe have high numbers of eligible children with no group care and very few child-minders.	The schools are developing sessional childcare places for funded two-year-olds using the on-site children's centre.
The general number of places available for	Bowbridge primary school is to be the base for additional two-year-olds places in

two year olds in Newark and Sherwood.	Newark.
	Farndon is looking to expand provision by moving the Preschool from the restricted school site to a different area of the village.

e. Rushcliffe

Rushcliffe lies immediately south of the City of Nottingham and the River Trent and extends across towards Newark in the North East and Loughborough in the South West. Although parts of the Borough lie close to Nottingham, Rushcliffe has a strong identity of its own. The main centre of population is West Bridgford, where around 36,000 of the Borough's 100,000 plus population live. The remainder of the district is largely rural, with the centres of population split between small towns and villages

TYPE OF CHILDCARE	RUSHCLIFFE (change from 2014)
CHILDMINDER	93 (-13)
HOME CHILDCARER	27 (-4)
TOTAL HOME BASED CARE	120 (-17)
OUT OF SCHOOL CLUBS	22 (-1)
CRECHE	0 (=)
DAY NURSERY/ FULL DAYCARE	35 (-1)
PRE-SCHOOL PLAYGROUP	28 (=)
TOTAL GROUP BASED CARE	85 (-2)

Rushcliffe has the highest range and number of childcare providers within the County; it has a good range of private day nursery provision, voluntary managed preschool groups and a comparable number of child-minders.

There is a constant turn-over of ownership, and a healthy number of new childminders registering each year, though the last year saw a large drop in the number of childminders. There was a net increase in the number of actual childcare places available in group care.

There is limited capacity for urban schools to admit rising threes, or to consider offering places to two-year-olds, but this may be a viable option for more rural schools in the district.

Childcare costs are the highest in this district.

Quality

The quality of Rushcliffe's registered providers currently on the Nottinghamshire directory of providers of free early education is as below;

	Total	Outstanding & Good	%	Requires Imp/ Satisfactory	Inadequate	Not Yet Inspected
Childminders	19	16	84%	2	0	1
Day Nurseries	31	29	94%	2	0	0
Preschools	28	25	89%	2	0	1
Total	78	70	89%	6	0	2

Targeted work is underway to improve quality to at least good for all providers with funded children. A "getting to good" Ofsted development programme is underway to improve quality on re-inspection.

Our Action Plan for Rushcliffe district in 2015/16

Identified Issue	Action/Solution
Despite the amount of provision available in the District there are concerns that some communities where eligible children live will have little provision or capacity for expansion, such as in Bingham.	Capital and trajectory funding for two-year-olds has been used to expand provision with existing providers in Bingham. Childminders will be encouraged to join the Nottinghamshire directory of providers.
There are already a number of providers at capacity for places for three year olds and a further factor impacting upon the capacity within Rushcliffe is the decision by some providers to no longer offer places to eligible two year olds.	Many children in and around West Bridgford access their early education hours across more than one provider. Heymann primary school now offers parents in West Bridgford the choice of maintained early years provision.
In Radcliffe on Trent the pre-school provision is based on the secondary Academy site, which is to be rebuilt. There is a need to find an alternate location for	NCC are working with property services to secure an alternate site in Radcliffe on Trent for the preschool to operate from a modular building.

provision for two-, three and four-year olds.	
There is a demand for places for two-year-olds in rural communities with little or no group care.	Some rural schools are now looking at the possibility of admitting two-year-olds, when the legislation changes in 2015.

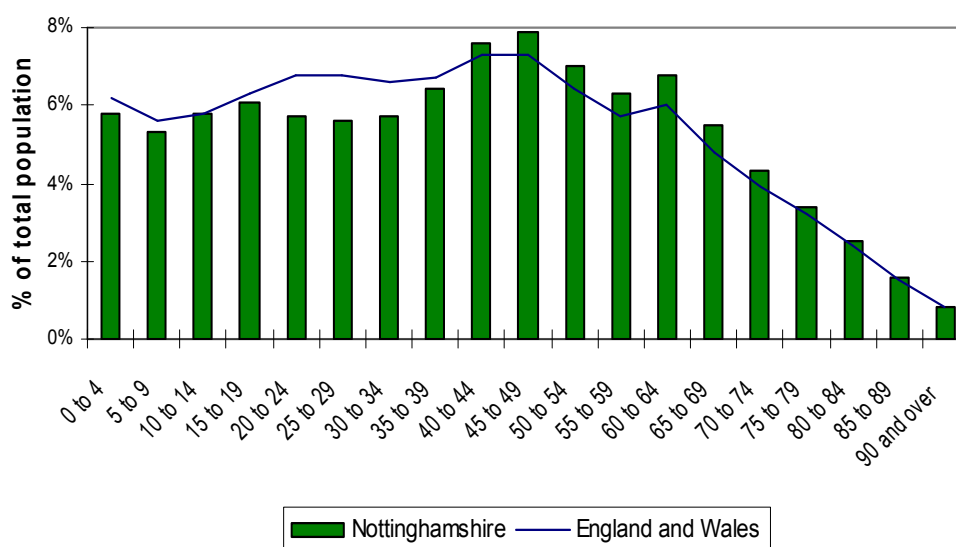
2011 Census (July 2012)

This is an analysis of data from the 2011 Census most relevant to the Children, Families & Cultural Services Department. Data used in this briefing can be accessed at: <http://www.ons.gov.uk/ons/guide-method/census/2011/index.html>

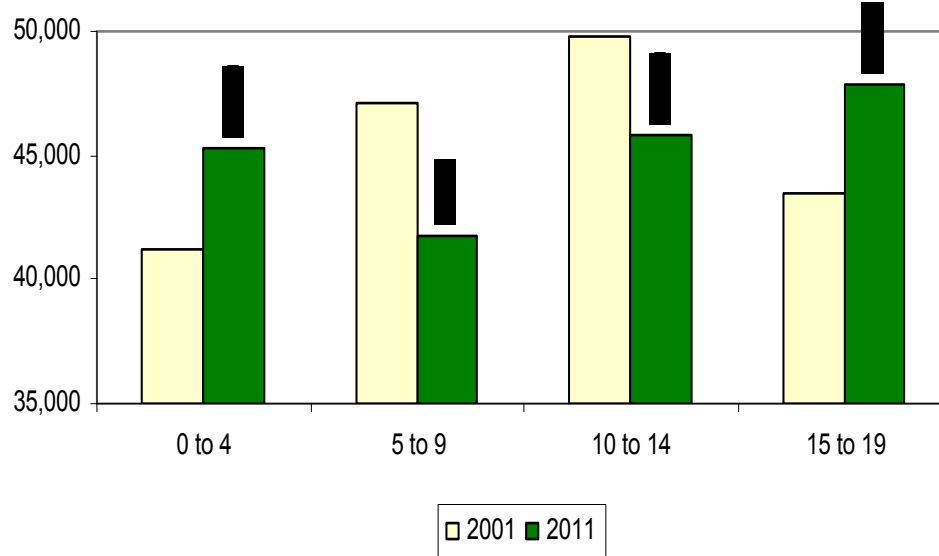
The County of Nottinghamshire in 2011:

- Total population is 785,800, an increase of 5.0% since 2001 (less than the England and Wales increase of 7.1%). Age distribution across the county is similar to the national distribution, but the proportion of residents aged over 45 is above the national average and the proportion in the 20-40 age groups is below.
- Children and young people make up 23.0% of the County's population, down from 24.0% in 2001 and slightly less than the 2011 England and Wales percentage of 24.0%.
- There are approximately 180,700 children and young people 0 - 19 years, a slight reduction of 0.5% since 2001 (in contrast to the England and Wales increase of 3.0%).
 - 0 - 4 population is now 45,300 (increase of 10.0%)
 - 5 - 9 population is now 41,700 (decrease of 11.5%)
 - 10 - 14 population is now 45,800 (decrease of 8.0%)
 - 15 - 19 population is now 47,900 (increase of 10.0%)
- The age 65 or over population is 18.0% - an increase from 16.5% in 2001, reflecting the long-term national trend towards an ageing population.
- There are 334,300 households in the county - an increase of 6.5% since 2001 (compared with a national increase of 7.5%).

Proportion of Nottinghamshire population by age (Census 2011)



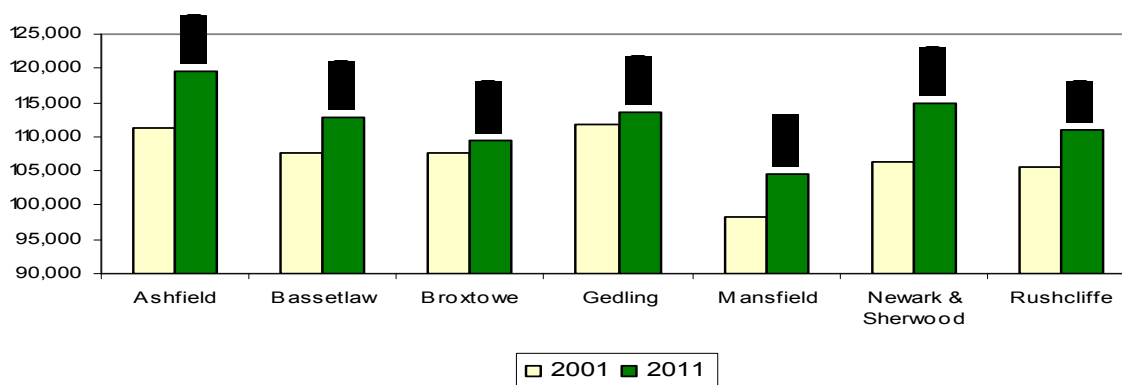
Population of children & young people in Nottinghamshire (Census 2011)



Districts in Nottinghamshire in 2011:

- Considerable variation in population numbers and changes across districts.
- Total population in all districts has increased - the largest increase since 2001 is in Newark & Sherwood (+8.0% or 8,500 people) and the lowest is in Gedling (+1.6% or 1,800 people).
- 0-19 year old population has increased most in Ashfield (+3.7%) and decreased most in Broxtowe (-4.0%).
- Highest number of households in Ashfield (50,900) and the largest increase in Newark & Sherwood (+9.7% or 4,300 new households).

**Total population in Nottinghamshire by district
(Census 2011)**



**Population of children & young people (0-19) in
Nottinghamshire (Census 2011)**

