

# EXCESS WINTER DEATHS AMONG OLDER PEOPLE IN NOTTINGHAMSHIRE

Mary Corcoran  
Joanna Cooper

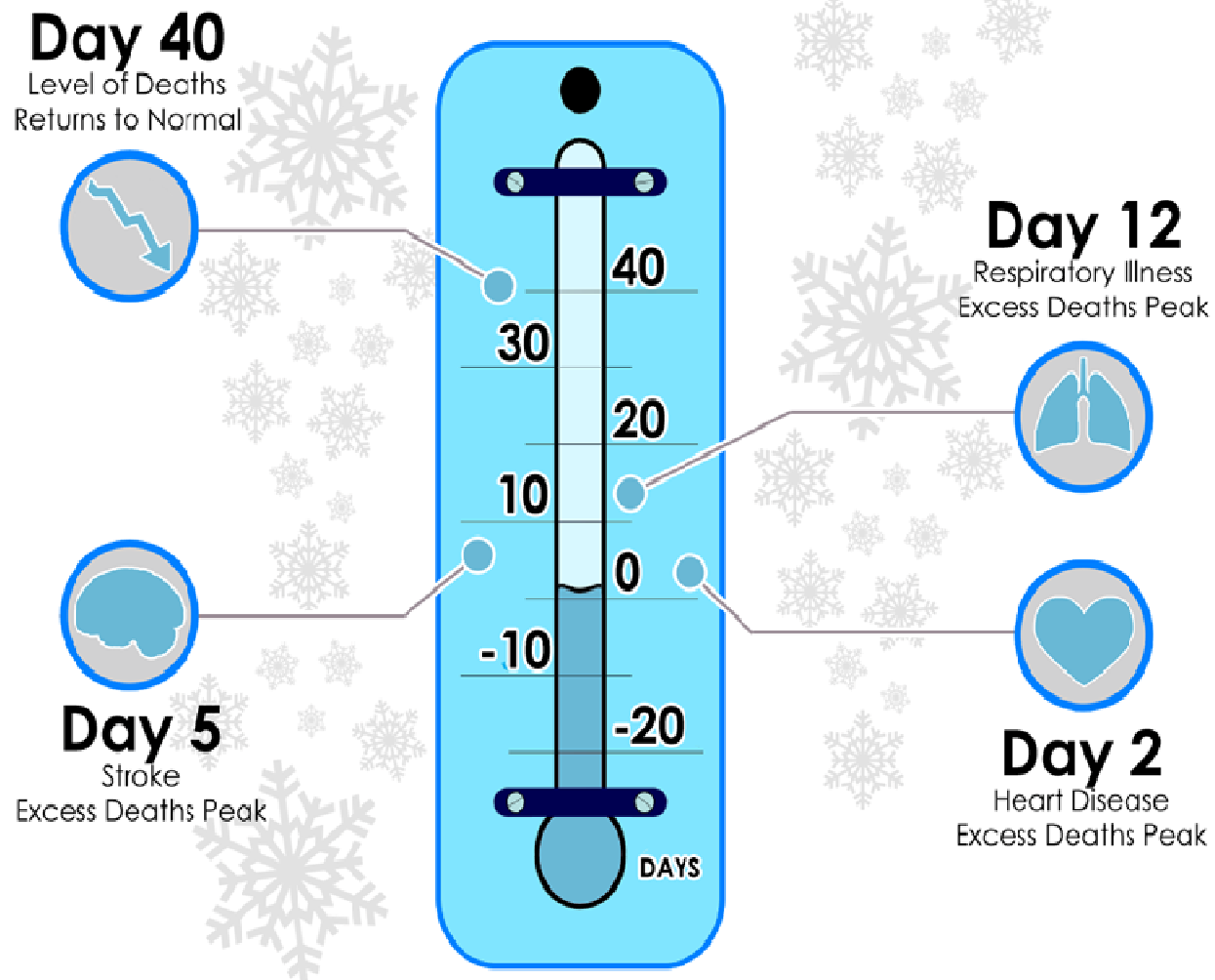


Nottinghamshire  
County Council

# The effects of cold on health

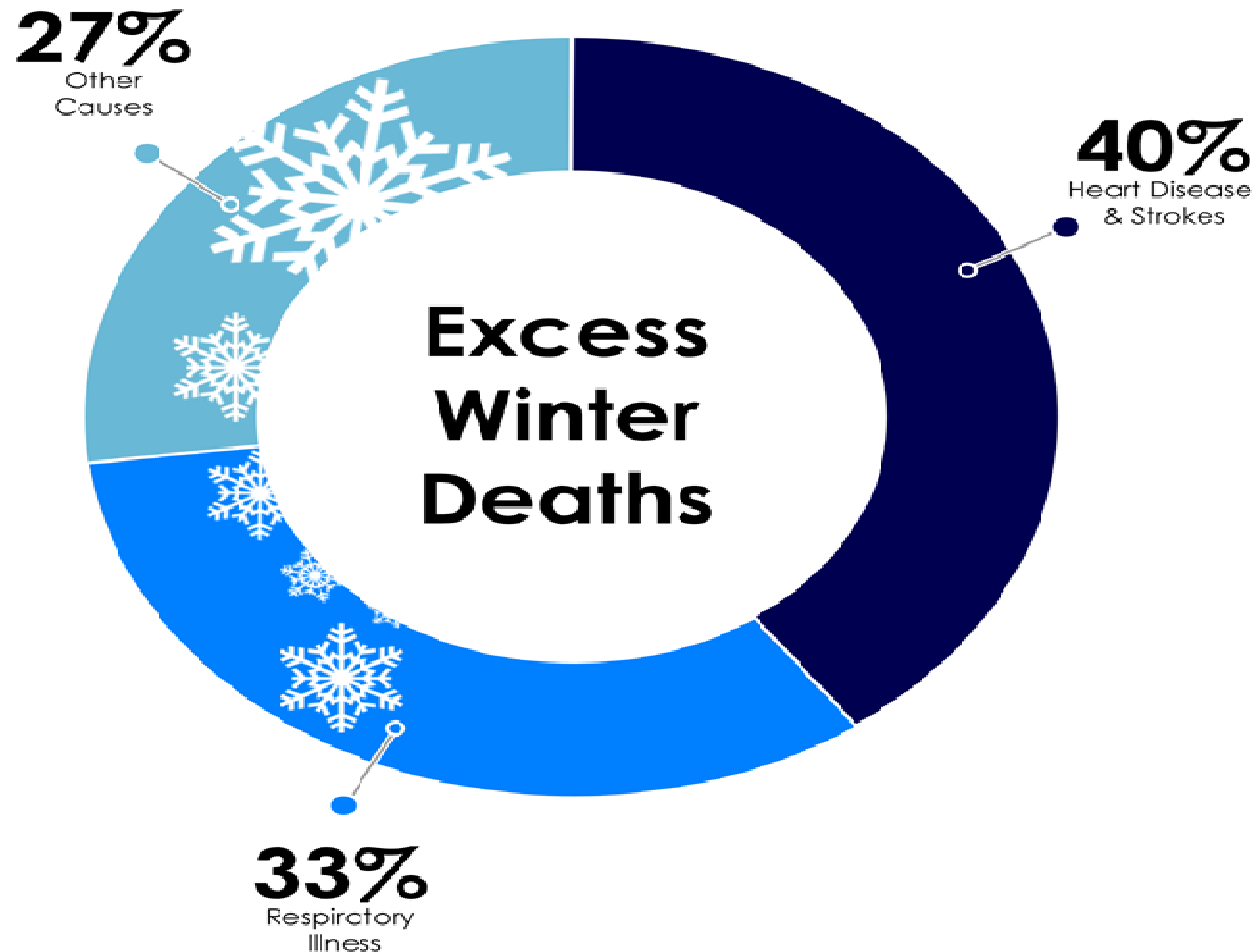
Indoor temperature	Effect on health
21°C (70°F)	Minimum recommended daytime temperature for rooms occupied during the day
18°C (65°F)	Minimum recommended night-time temperature. No health risks though occupants may feel cold
<16°C (<61°F)	May diminish resistance to respiratory diseases
9-12°C (48-54°F)	May increase blood pressure and risk of cardiovascular disease
5°C (41°F)	Poses a high risk of hypothermia

## Excess Winter Deaths



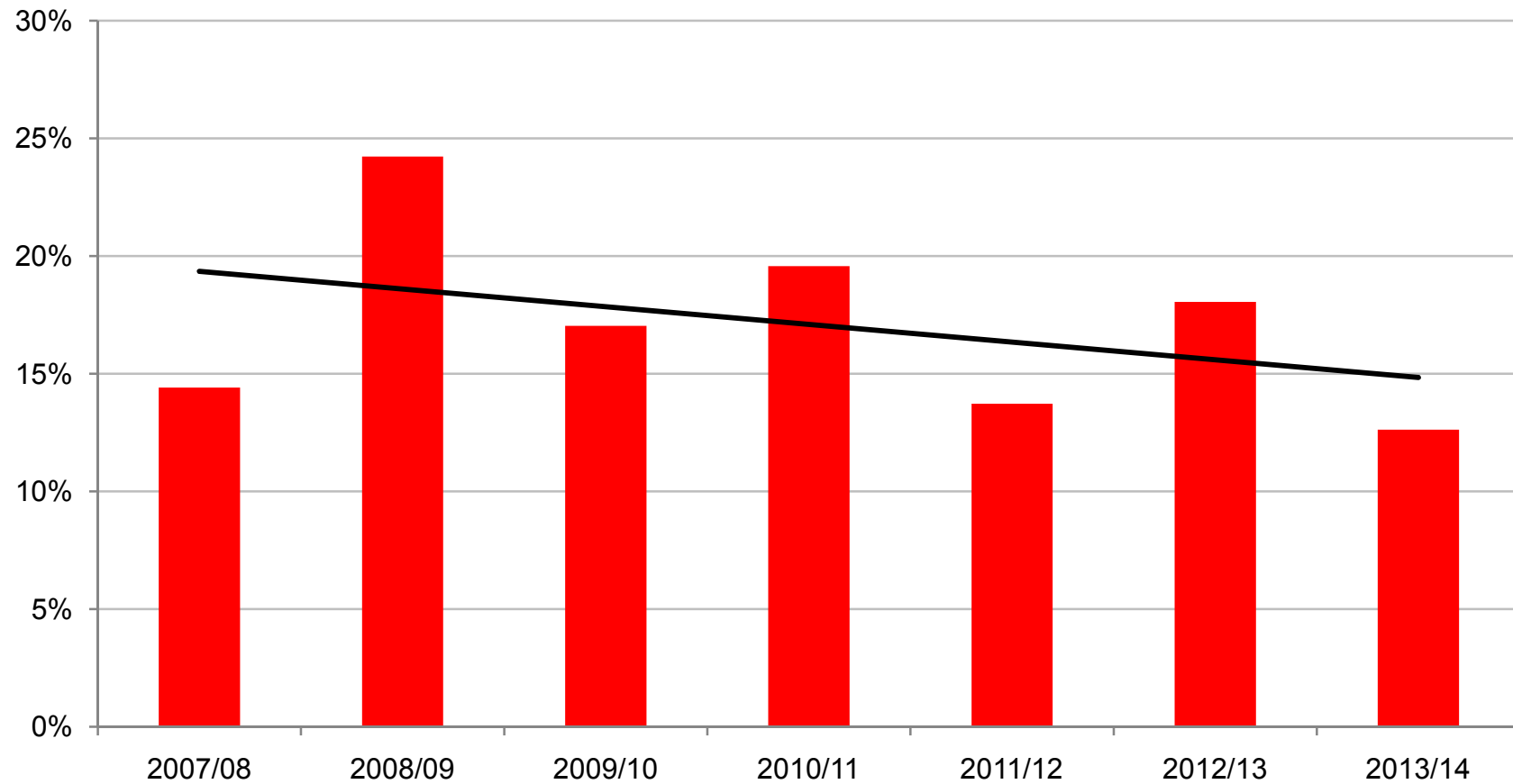
**Nottinghamshire  
County Council**

# Excess Winter Deaths

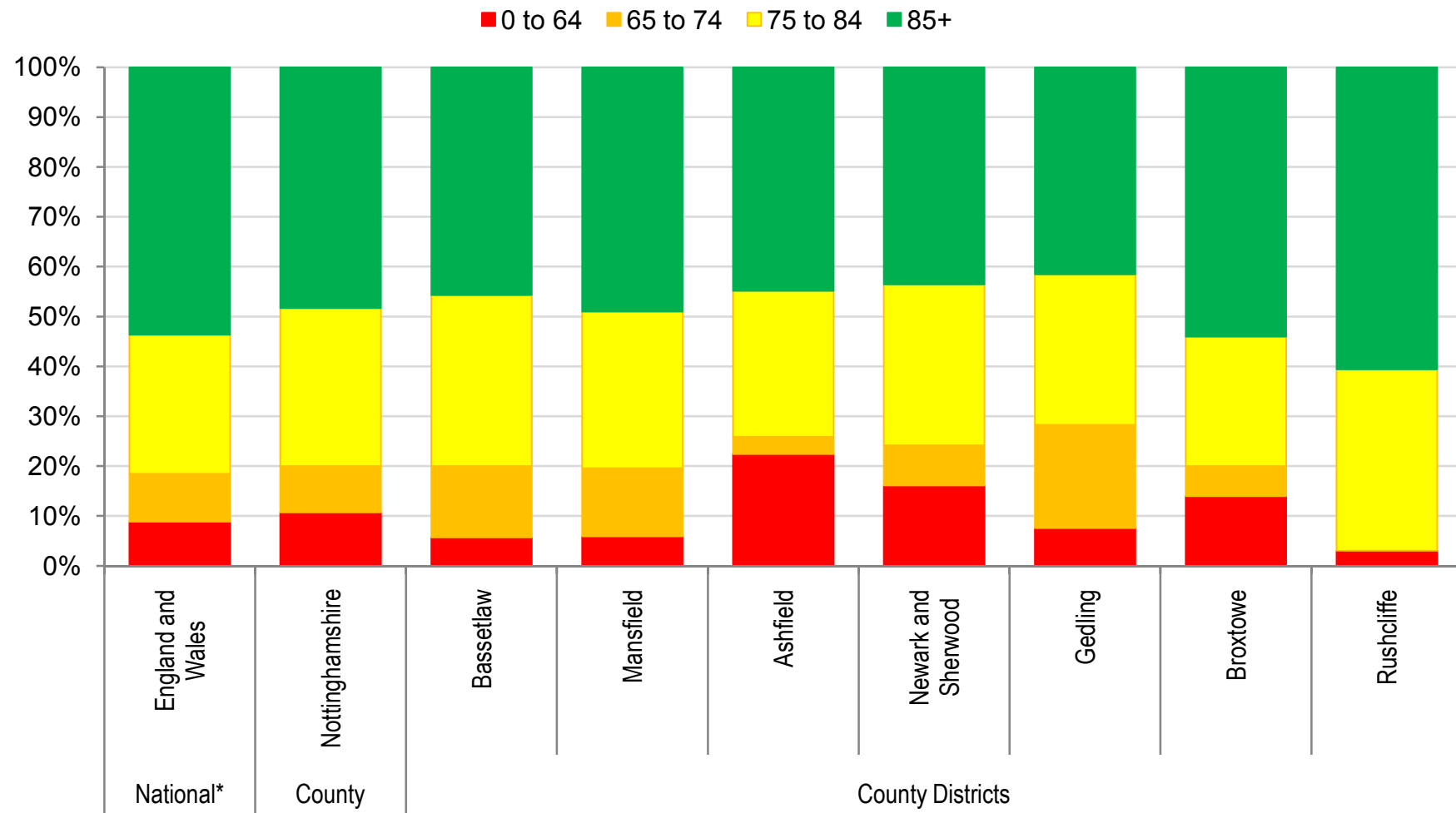


Nottinghamshire  
County Council

# Excess winter deaths in Nottinghamshire

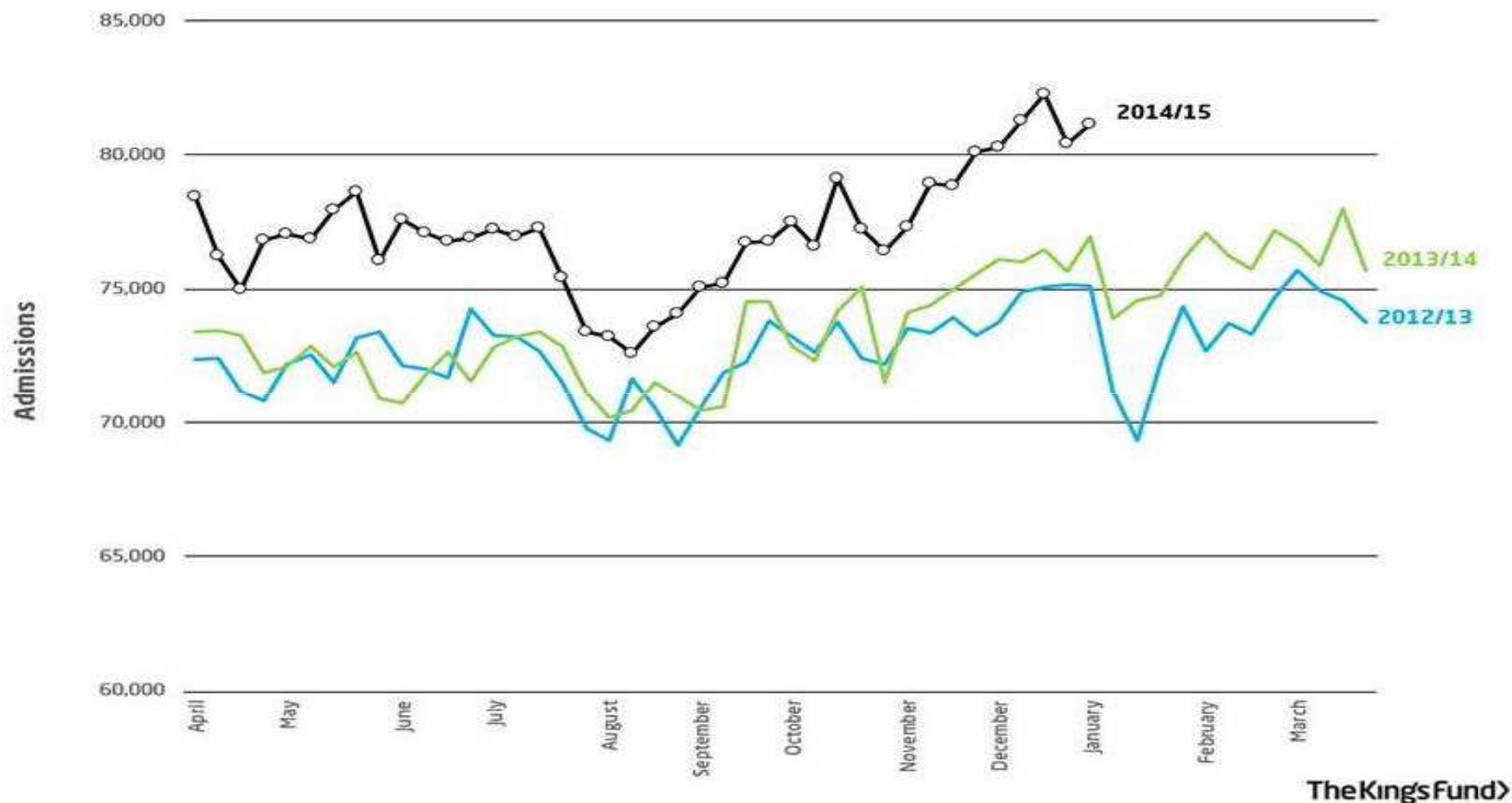


# The impact of age

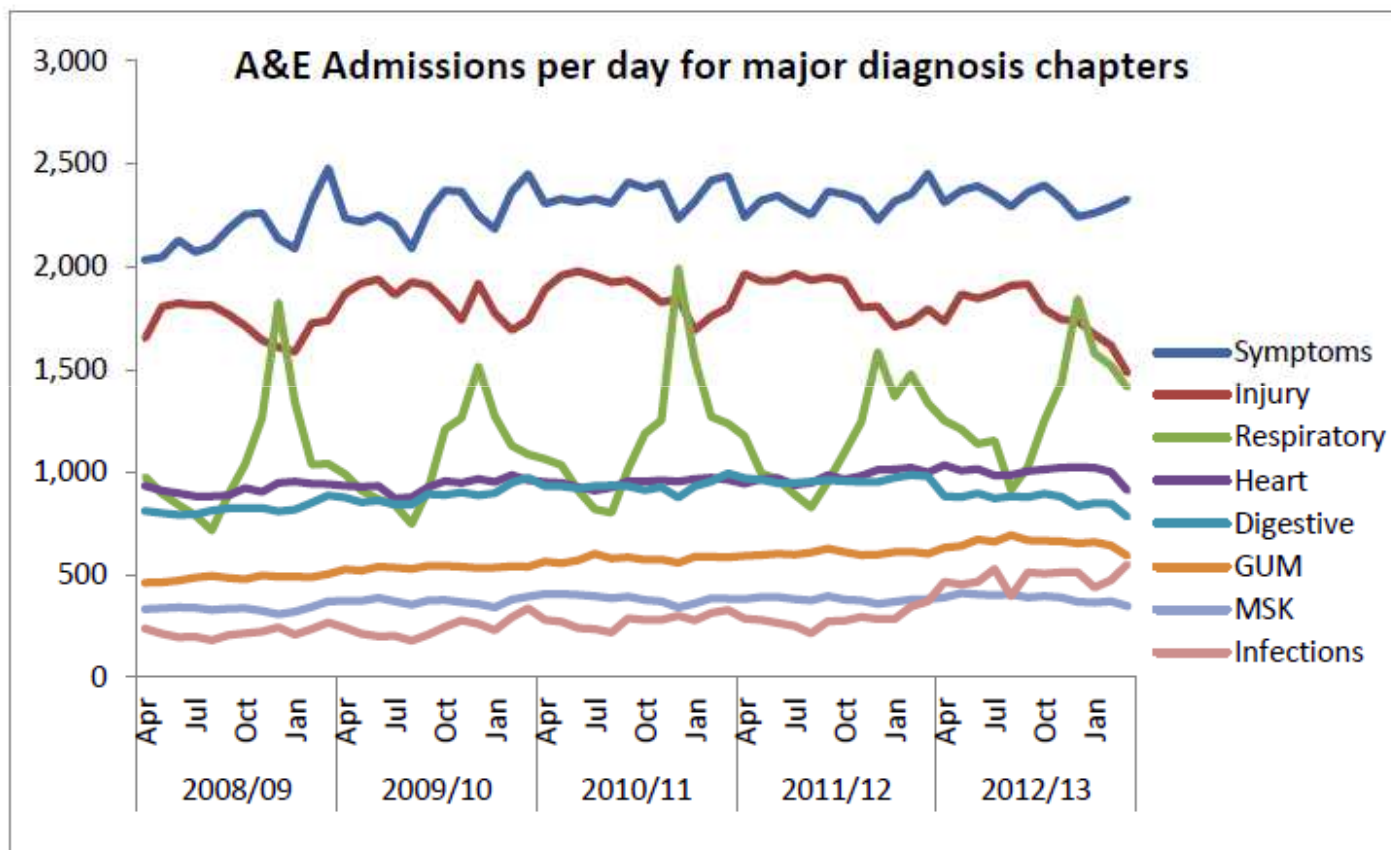


Nottinghamshire  
County Council

# Seasonal variation in emergency admissions



Nottinghamshire  
County Council



**Nottinghamshire  
County Council**



# NICE Guidance

Strategy

SPA

Tailored  
Solutions

Risk  
Stratify

MECC

Safe  
discharge

Training

Awareness  
Raising

Building  
Standards



Nottinghamshire  
County Council

# What are we doing?

- JSNA completed 2014
- Preventative Services:
  - Publicity
  - HPAS and Early Intervention services
  - Training
- Reviewed progress against NICE guidance
- LAEP Bids



# Recommendations to the Board

1. To note the progress made to date.
2. All relevant bodies should receive a report on excess winter deaths.
3. The Nottinghamshire Housing Integrated Commissioning Group should refresh the Affordable Warmth Strategy and develop an action plan.
4. An update is presented to the Board in April 2016,