

Services for Children & Young People in Nottinghamshire

Colin Pettigrew

Health & Wellbeing Board
5 October 2016

Context & Child Profile

- Approximately **162,500 children and young people** under the age of 18 years live in Nottinghamshire:
 - This constitutes around 20.5% of the total population in the area;
 - 153,705 children and young people in Nottinghamshire are of a school age (aged 3 – 19).
- Approximately **17%** of the local authority's children are living in poverty.
- Children and young people from **minority ethnic groups account for 7% of all children living in the area**, compared with 22% in the country as a whole.



Context & Child Profile

- Nottinghamshire is one of the **largest Children's Services authorities in the country**.
 - Services for children in need of help and protection, children looked after and care leavers were judged to be **'Good' by Ofsted** in May 2015.
- There are around **340 schools** in the County:
 - 238 Primary Schools (42 of these are Academies);
 - 46 Secondary Schools (41 of these are Academies);
 - 11 Special Schools (2 of these are Academies - in January 2016, 945 young people were on roll at one of Nottinghamshire's special schools/academies).
- As at August 2016:
 - **772** children are being **'Looked After'** by the local authority;
 - **808** children and young people are the subject of a **Child Protection Plan**;
 - **1,118** children and young people are the subject of a **Child in Need Plan**.

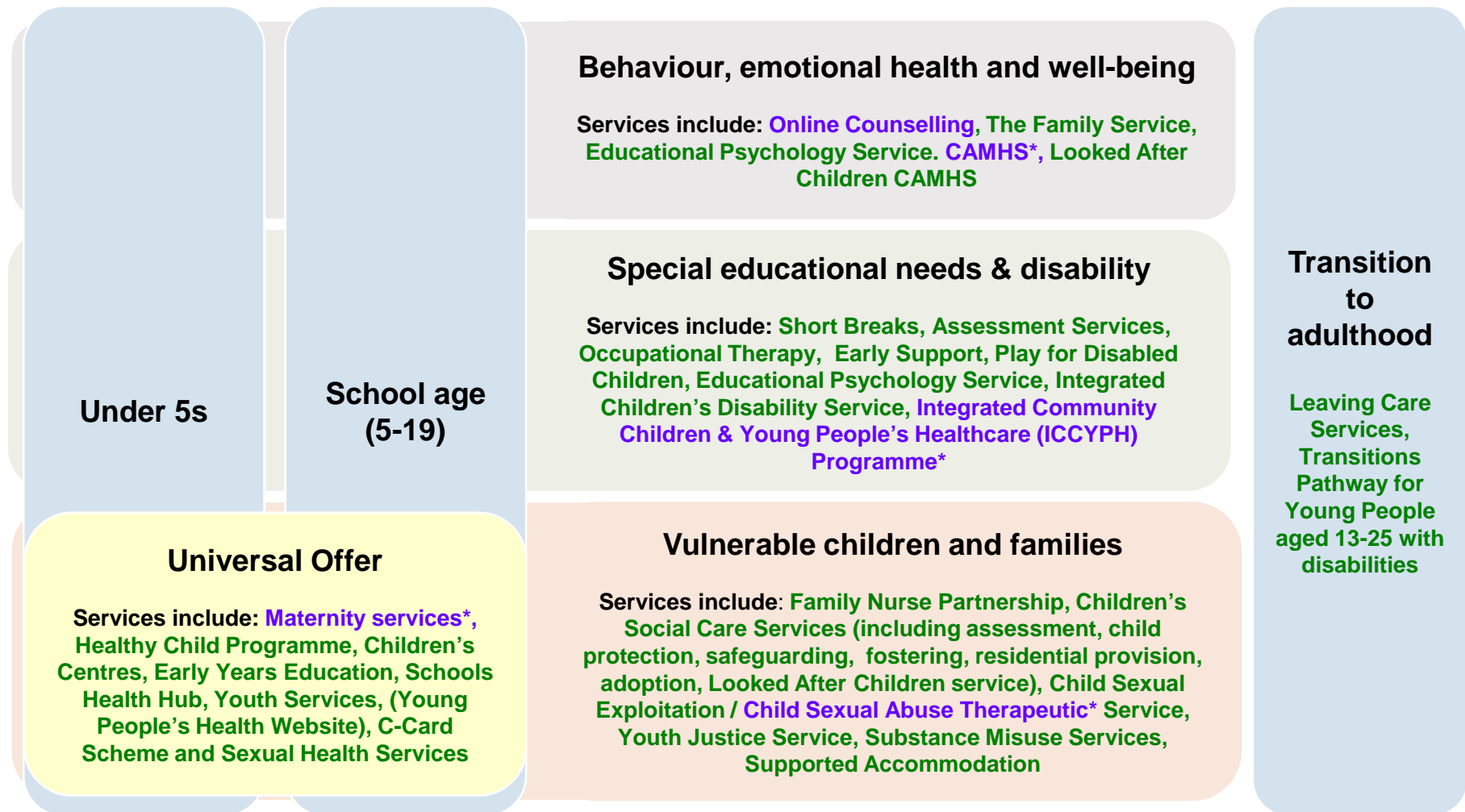


Services for Children & Young People

- Services for young people may be **delivered directly** by the County Council, or they may be **commissioned services** – for example, children and young people's health and wellbeing related commissioning. There are also a range of **partner agencies** and **independent providers** delivering key services for children and young people across the County.
- Services for children and young people are available from **conception to 19 years**, or **24 years if the young person has a learning difficulty or disability**. Most children and young people in Nottinghamshire will have their needs met by Universal Services.
- The services identified in this presentation are not intended to be a definitive list, but indicate some of the **key services** for Nottinghamshire's children.



Services for Children & Young People



* denotes services commissioned by CCGs

Key Priorities for Children's Services

- Managing demand with fewer resources, particularly for the most vulnerable children, young people and families.
- Continuing to strengthen partnerships and promote integration – to ensure we are working better together across services and agencies, reducing duplication and maximising outcomes and value.
- Capitalizing on opportunities for innovation and new ways of working.
- Managing in a changing policy landscape:
 - *“Educational Excellence Everywhere”* White Paper
 - *“Children's Social Care Reform: A Vision for Change”* policy paper
 - Regionalisation of Adoption Services
 - Children & Social Work Bill