

## Current and Future provision

Current Provision	Future Provision
<p>NPA Centres (4 centres)</p> <p>Saturday Morning Dance, Drama and Music Workshops</p>	<p><b>Dance/Drama</b></p> <p>Active placement to pre-existing dance and drama groups in all areas</p> <p>Targeted arts projects in areas of need identified with parents/carers, young people, existing Special educational Needs and Disability (SEND) groups</p> <p><b>Music</b></p> <p>Area Continuation Bands (7 districts) – Start April 2015</p> <p>Free Term Bands (7 districts)- October 2015</p> <p>Area vocal programmes (7 districts) – 7 singing hub schools</p> <p>Secondary Musical Futures projects (7 districts) – 1 set up 6 in process</p> <p>County Youth Arts existing provision and newly developing provision in schools, community settings and The Old Library</p> <p>Targeted arts workshops/events for 13 -19 years in areas of need identified by young people and professionals.</p> <p>Widening access of Able Orchestra Project piloted in February 2015. Jointly funded through Music Education Hub.</p> <p>Targeted arts projects in areas of need identified with parents/carers, young people, existing Special educational Needs and Disability (SEND) groups and professional. Jointly funded through Music Education Hub and Council contribution.</p>
<p>County Choir</p>	<p><b>7 district vocal programmes</b> (open access, all ages) run in conjunction with existing Singing Hub Schools – 3 set up, 4 more in negotiation.</p> <p>IMT/County Choir up and running and recruited to.</p> <p>Links in to Community Choir for Children and Adults.</p> <p><b>Workshop</b> opportunities throughout year to work with leading vocal coaches on specific techniques/genres</p>

	Planned 1 <sup>st</sup> event happening November 2015  Partnership with <b>National Youth Choir of Great Britain</b> for talent vocalists of all ages including audition held for all NYCGB age group choirs held in Nottinghamshire  Organised starting November 2015
Black Box Theatre Company	Active placement in pre-existing provision e.g. Playhouse Nottingham, Mansfield Palace Theatre, Newark Palace Theatre, Flying High in Gedling
Concert Band and Intermediate Band	Active placement in pre-existing provision e.g. Advanced Music Ensemble, Music Workshop (training ensemble), Newark and Sherwood Concert Band, Nottingham Winds, Bandwise (Music for Everyone)
Red Hot Band	Active placement in pre-existing provision e.g. Jazz Steps, East Midlands Jazz Orchestra
Steel Band	Active placement in pre-existing provision. Steel Pan group in Bassetlaw

## **Out of school provision – widen reach of existing open access provision**

### **First Access Area Bands – free term**

After school week day provision for young people unable to access Whole Class Ensemble Teaching at school. 7 partnership projects – free tuition and instrument at point of access. Funded by Music Education Hub. Commencing September 2015.

### **Area Continuation Bands**

Grow and extend after school week day provision for young people wishing to continue playing after a WCET programme. 7 projects delivered in partnership with schools. Open access, charged provision at £3.50 per week. Joint funded by Music Education Hub, partner schools and income. Commenced March 2015 with young people from partner schools, open access to all young people involved in WCET programme from September 2015.

### **Secondary Continuation Projects**

After school week day provision for young people wishing to continue playing after secondary consolidation project. Based on Musical Futures pedagogy. 7 projects delivered in partnership with schools. Open access, charged provision at £3.50 per week. Joint funded by Music Education Hub, partner schools and income. Commencing September 2015

## **Out of school provision for talented young people developing as part of new model post March 2016**

### **Vocal Programme – new model**

A series of events, workshop and performance opportunities building on and hosted by Singing Hub Schools. 7 areas covered with provision leading into opportunities provided in partnership with National Youth Choir of Great Britain for talented young vocalists and auditions for NYCGB age group choirs held in Nottinghamshire. Builds on established singing strategy and engagement with schools and young people through Singing Hub Schools. Jointly funded through Music Education Hub, NYCGB and The Royal Concert Hall.

### **Able Orchestra**

Short targeted projects based in Special Educational Needs settings using iPads and music technology to enable SEND young people opportunities to compose and perform music with other young people and professional musicians. Funded through Music Education Hub this represents existing provision piloted in February 2015 which will now be extended further.

### **Nottinghamshire Talent and Potential Project – all ages, higher ability**

Invitation or self-selected auditioned project providing young people opportunities to work alongside and be mentored by professional musicians, composers, conductors and world-class ensembles.

A series of workshops of differing lengths throughout the year for the young people to broaden and deepen their musical abilities through composing, arranging, conducting, recording and collaborating with other young people, musicians and artist.

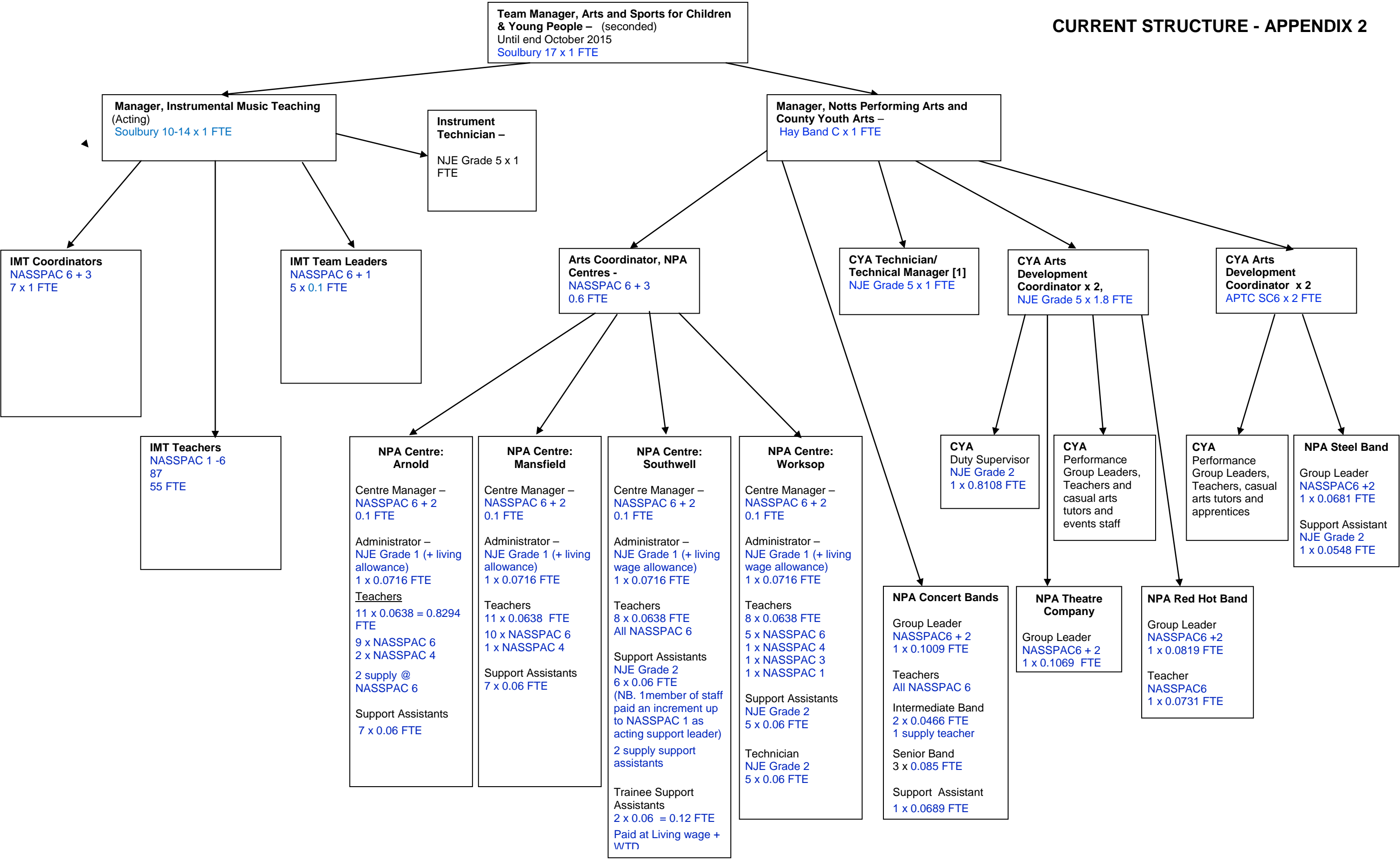
### **FastForward (working title)**

East Midlands provision for talented young musician from all genres, backgrounds and ages. Coordinated by Pedestrian Arts, backed by a consortium of East Midlands Music Education Hubs, the provision will be devised by young musicians for young musicians. Initial work being carried out from May 2015 to form youth panel(s), identify current opportunities in the region for talented musicians and start work on launch event(s) mid 2016.

### **ALLRCHESTR@ - a strand of FastForward**

A regional pilot event in the East Midlands run by Hand on Heart Arts, backed by a consortium of East Midlands Hubs providing a high quality performance event for any young musician regardless of background, genre or instrument. Young people will work with professional musician to devise new pieces and perform them nationally.





Arts and Sports for Children and Young People: Staffing Structure – May 7<sup>th</sup> 2015

**PROPOSED STRUCTURE - APPENDIX 3**

