

Emergency Care Achievements and Challenges

Ben Owens

Clinical Director for Urgent and
Emergency Care

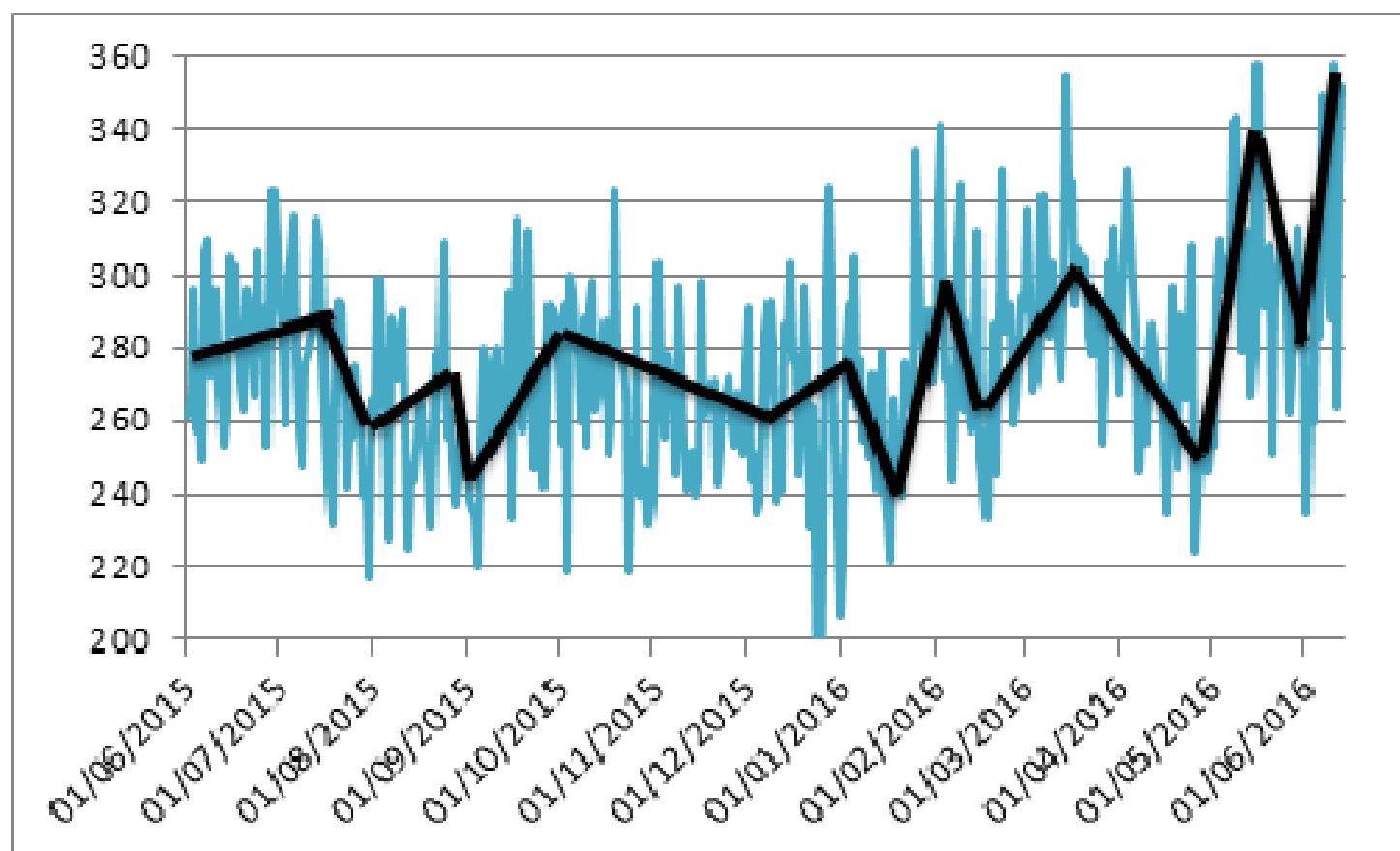


Performance

- 94.43% for the 4h access target in 15/16 year
 - 19th of 135 acute trusts
- 95.16% in May 16
- Ambulance handover best in region
- Mortality - 118 down to 88 HSMR
- Sepsis – 95% treated in 1h



Recent activity



Flow

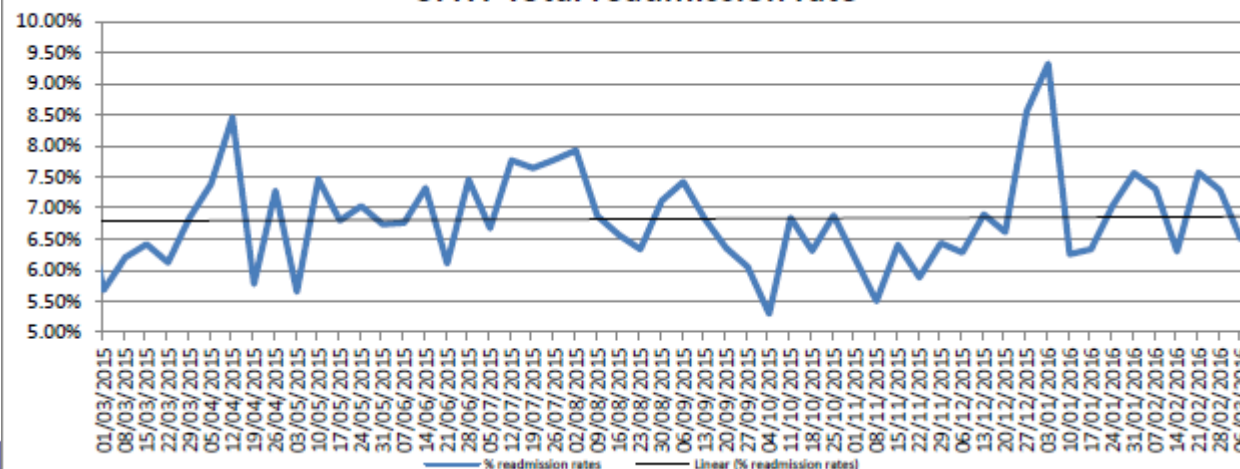
- 107 beds closed since Jan 15
 - Reducing risk and cost
- 1.5 days off emergency length of stay
- Ambulatory care/admission avoidance
- Short stay – 90 patients a week from 24
- Daily consultant review/Board round
- Discharge lounge with beds
- Consultant ward rounds at the weekend from every speciality



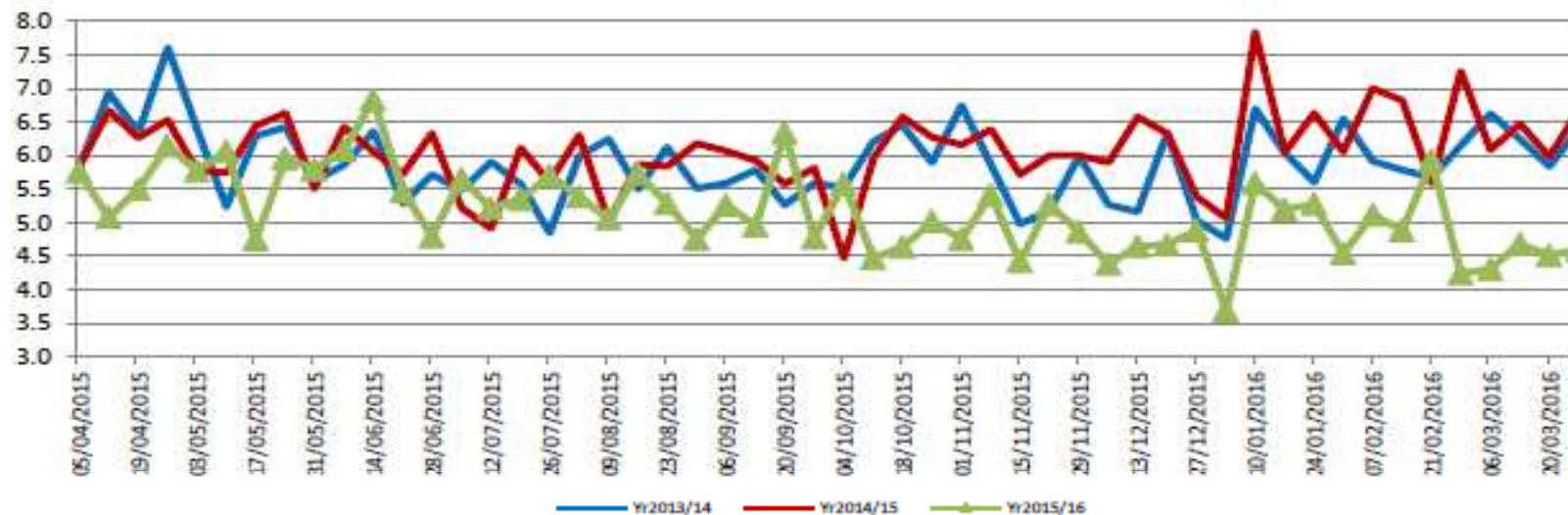
SFHT number of weekend Inpatient discharges



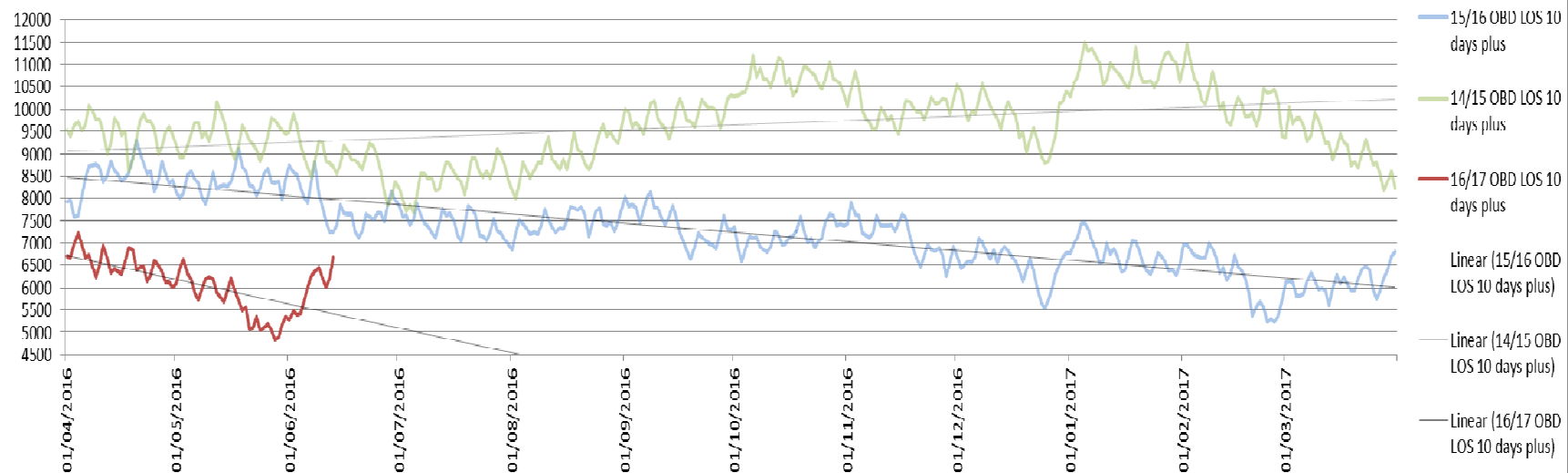
SFHT Total readmission rate



Crude Average Length of Stay - Non Elective Medical



SFH Trust Total



Community Interface

- FIT team
- PRISM
- Call 4 Care – new pathways
- Single front Door – 25% now seen in primary care

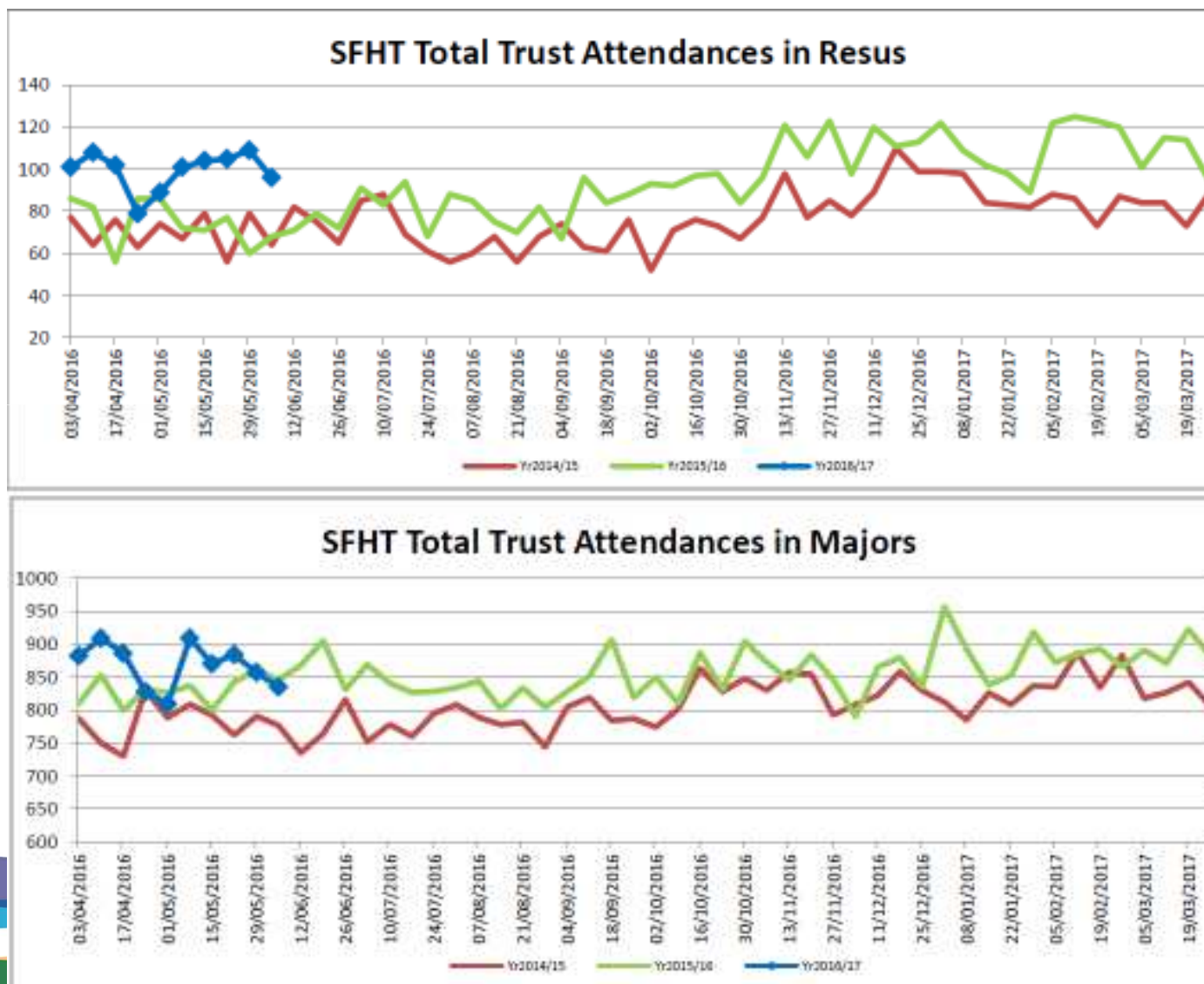


Challenges going forward

- Workload and case mix
 - 8% increase in attendances Jan- March
 - May 5% more than last year
 - Ambulance conveyances up 15% April/May
- Staffing – medical and nursing shortage
- Changes in Primary Care provider
- All the above areas of good performance need improving constantly



Case Mix



Questions?



