

Place Select Committee

Wednesday, 06 July 2022 at 10:30

County Hall, West Bridgford, Nottingham, NG2 7QP

AGENDA

- | | | |
|---|--|--------|
| 1 | Apologies for Absence | |
| 2 | Declarations of Interests by Members and Officers:- (see note below)
(a) Disclosable Pecuniary Interests
(b) Private Interests (pecuniary and non-pecuniary) | |
| 3 | Terms of Reference and Membership | 3 - 6 |
| 4 | Work Programme - Presentation and Discussion Item | 7 - 22 |

Notes

- (1) Councillors are advised to contact their Research Officer for details of any Group Meetings which are planned for this meeting.
- (2) Members of the public wishing to inspect "Background Papers" referred to in the reports on the agenda or Schedule 12A of the Local Government Act should contact:-

Customer Services Centre 0300 500 80 80

- (3) Persons making a declaration of interest should have regard to the Code of Conduct and the Council's Procedure Rules. Those declaring must indicate the nature of their interest and the reasons for the declaration.

Councillors or Officers requiring clarification on whether to make a declaration of interest are invited to contact Sara Allmond (Tel. 0115 977 3794) or a colleague in Democratic Services prior to the meeting.

- (4) Councillors are reminded that Committee and Sub-Committee papers, with the exception of those which contain Exempt or Confidential Information, may be recycled.
- (5) This agenda and its associated reports are available to view online via an online calendar - <http://www.nottinghamshire.gov.uk/dms/Meetings.aspx>

REPORT OF THE SERVICE DIRECTOR, CUSTOMERS, GOVERNANCE AND EMPLOYEES

TERMS OF REFERENCE AND MEMBERSHIP

Purpose of the Report

1. To set out the membership and terms of reference of the Place Select Committee.

Information

2. The Chairman and Vice-Chairman of Place Select Committee, Councillors Nigel Moxon and Tom Hollis, were appointed at Full Council on 12 May 2022, with the following Committee membership reported to the same meeting:

Richard Butler
Anne Callaghan BEM
Penny Gowland
Mike Introna
John Ogle
Nigel Turner
Roger Upton
Jonathan Wheeler
Elizabeth Williamson

3. At its meeting on Thursday 31 March 2022, the Council agreed the terms of reference for the Place Select Committee, as set out below:

PLACE SELECT COMMITTEE – TERMS OF REFERENCE	
The Place Select Committee will discharge the functions below:	
a.	Scrutinise and review any matter within the remit of the Place Department
b.	Statutory responsibility for crime and disorder scrutiny, having regard to paragraph 13 of Overview and Select Committee Procedure Rules
c.	Statutory responsibility for flood risk management scrutiny, having regard to paragraph 13 of Overview and Select Committee Procedure Rules

d.	Consider matters within their remit affecting the county of Nottinghamshire/its inhabitants
e.	Assist in the development of the Budget and Policy Framework and analysis of policy issues as they affect the Select Committee
f.	Work to engage communities in scrutiny and encourage community participation in policy development
g.	Liaise with external organisations to ensure the interests of local people are enhanced by collaborative working
h.	Review and/or scrutinise decisions made, or actions taken in connection with the discharge of the Council's functions
i.	Review/scrutinise performance of the Council against policy objectives and performance targets
j.	Consider Councillor Calls For Action (CCfA) within the remit of this Select Committee in accordance with agreed procedures
k.	Make reports and/or recommendations to Full Council/Cabinet/Committee or appropriate agencies in connection with the discharge of any functions
l.	May establish sub committees or working groups to undertake reviews where an issue merits in-depth scrutiny

Other Options Considered

4. None.

Reason/s for Recommendation/s

5. To inform the Place Select Committee of its membership and terms of reference.

Statutory and Policy Implications

6. This report has been compiled after consideration of implications in respect of crime and disorder, data protection and information governance finance, human resources, human rights, the NHS Constitution (public health services), the public sector equality duty, safeguarding of children and adults at risk, service users, smarter working, sustainability and the environment and where such implications are material they are described below. Appropriate consultation has been undertaken and advice sought on these issues as required.

RECOMMENDATION/S

That the Committee membership and terms of reference are noted.

Marjorie Toward
Service Director, Customers, Governance and Employees

For any enquiries about this report please contact:

Sara Allmond, Democratic Services Email: sara.allmond@nottsc.gov.uk
Tel: 0115 997 3794

Constitutional Comments (EKH 13/06/2022)

7. The report falls within the remit of the Place Select Committee.

Financial Comments (RWK 01/06/2022)

8. There are no specific financial implications arising directly from the report.

Background Papers and Published Documents

Except for previously published documents, which will be available elsewhere, the documents listed here will be available for inspection in accordance with Section 100D of the Local Government Act 1972.

- Reports to full Council on 31 March 2022 and 12 May 2022 (published)

Electoral Division(s) and Member(s) Affected

- All

Place Department



Adrian Smith
Corporate Director & Deputy
Chief Executive



Nottinghamshire
County Council

The Nottinghamshire Plan 2021-2031

Healthy Prosperous Green

The Nottinghamshire Plan is ambitious for all our futures in creating a healthier, more prosperous, and greener Nottinghamshire



 Nottinghamshire
County Council

- Approved at full Council – 25th November 2021
 - Improving health and well-being in all our communities
 - Growing our economy and improving living standards
 - Reducing the County's impact on the environment
 - Helping everyone access the best of Nottinghamshire.

Council Plan Ambitions

- 4 themes supported by 9 ambitions
 1. Helping our people live healthier, more independent lives
 2. Supporting our county's communities and families
 3. Keeping vulnerable children, adults, and communities safe
 4. Building skills that help people to get good local jobs
 5. Strengthening businesses and creating more good-quality jobs
 6. Making Nottinghamshire somewhere people love to live, work and visit
 7. Attracting investment in infrastructure, economy, and green growth
 8. Improving transport and digital connections
 9. Protecting the environment and reducing our carbon footprint.



**Nottinghamshire
County Council**

Universal place services

- The foundation on which everything is built
- Over 850,000 people use our services every day
- We're there at every stage and event of life
- The front line interface with elected Members
- The cornerstone of making Notts a great place to live
- Our performance is good and maintained through new financial context



**Nottinghamshire
County Council**

Place Department

- Two Divisions

Investment & Growth

- Planning
- Growth, Infrastructure & Economic Development
- Property Asset Management
- HS2

Service Director – Matthew Neal



Place Department cont.

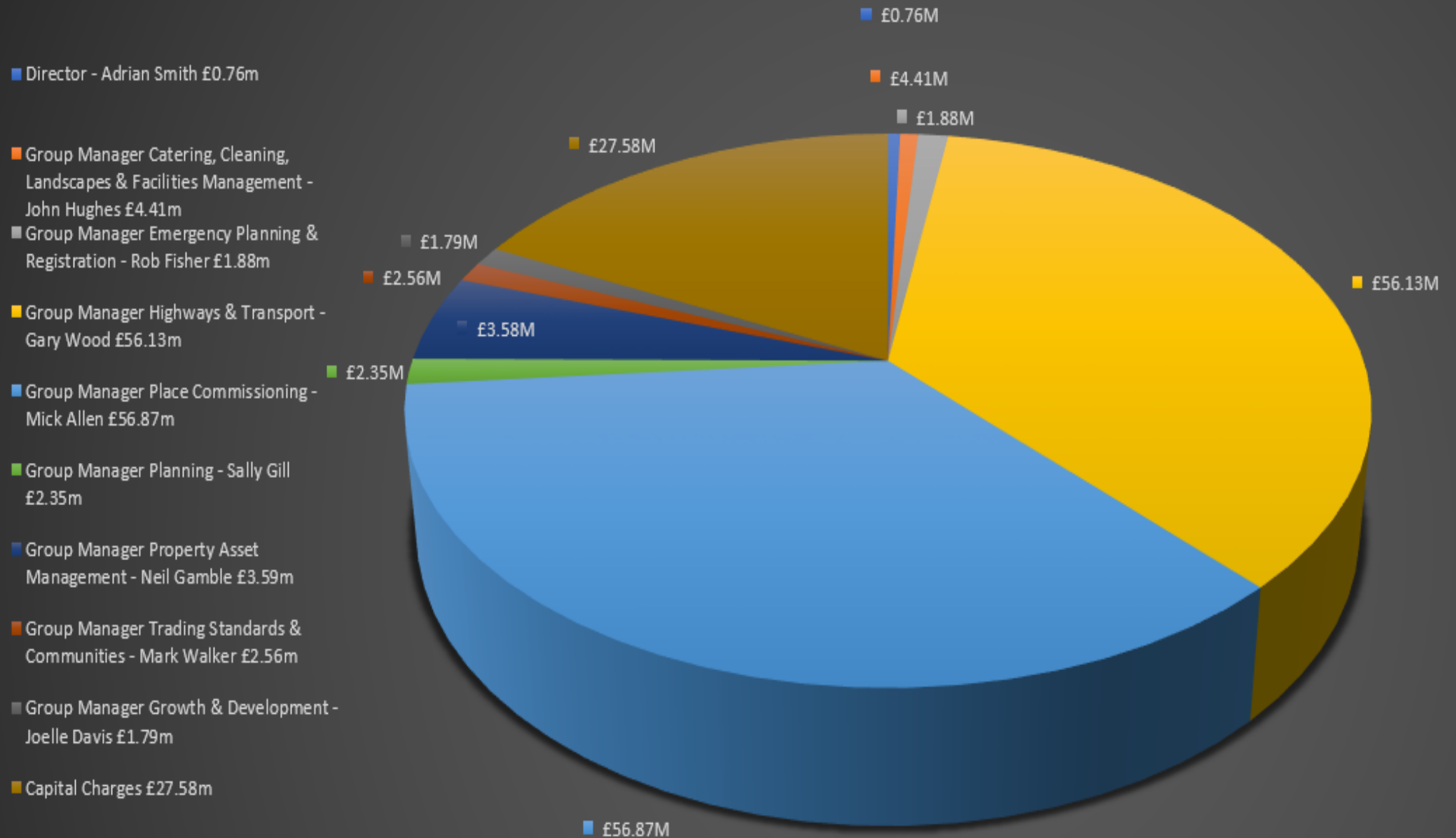
Place & Communities – focus on direct service provision

- Catering and Facilities Management
- Trading Standards & Communities
- Emergency Planning & Registration
- Highways, Transport and Flood Risk
- Waste disposal
- Libraries and cultural services
- Property maintenance and construction
- Carbon reduction

Service Director Derek Higon



2022-23 Place Department Original Budget £157.91M



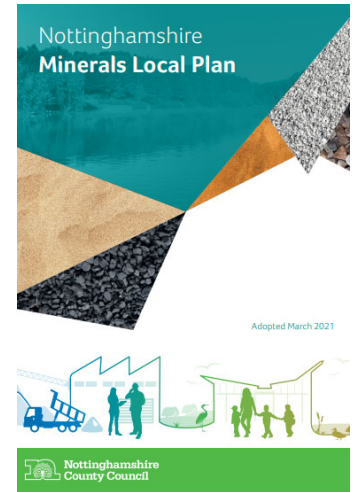
**Nottinghamshire
County Council**

Place Leadership Team

Name	Title		Name	Title
Adrian Smith	Corporate Director Place		Derek Higton	Service Director Communities & Place
Matthew Neal	Service Director Investment & Growth		John Hughes	Group Manager Catering, Facilities
Sally Gill	Group Manager Planning		Rob Fisher	Group Manager Emergency Planning & Registration
Joelle Davies	Group Manager Growth Infrastructure & Economic Development		Mark Walker	Group Manager Trading Standards & Communities
			Fiona Needham	Acting Head of Trading Standards
Neil Gamble	Group Manager Property & Asset Management		Gary Wood	Group Manager Highways & Transport
			Mick Allen	Group Manager Place Commissioning

Planning

- Planning Policy
- Highways Development Control
- Conservation



Growth, Infrastructure and Development

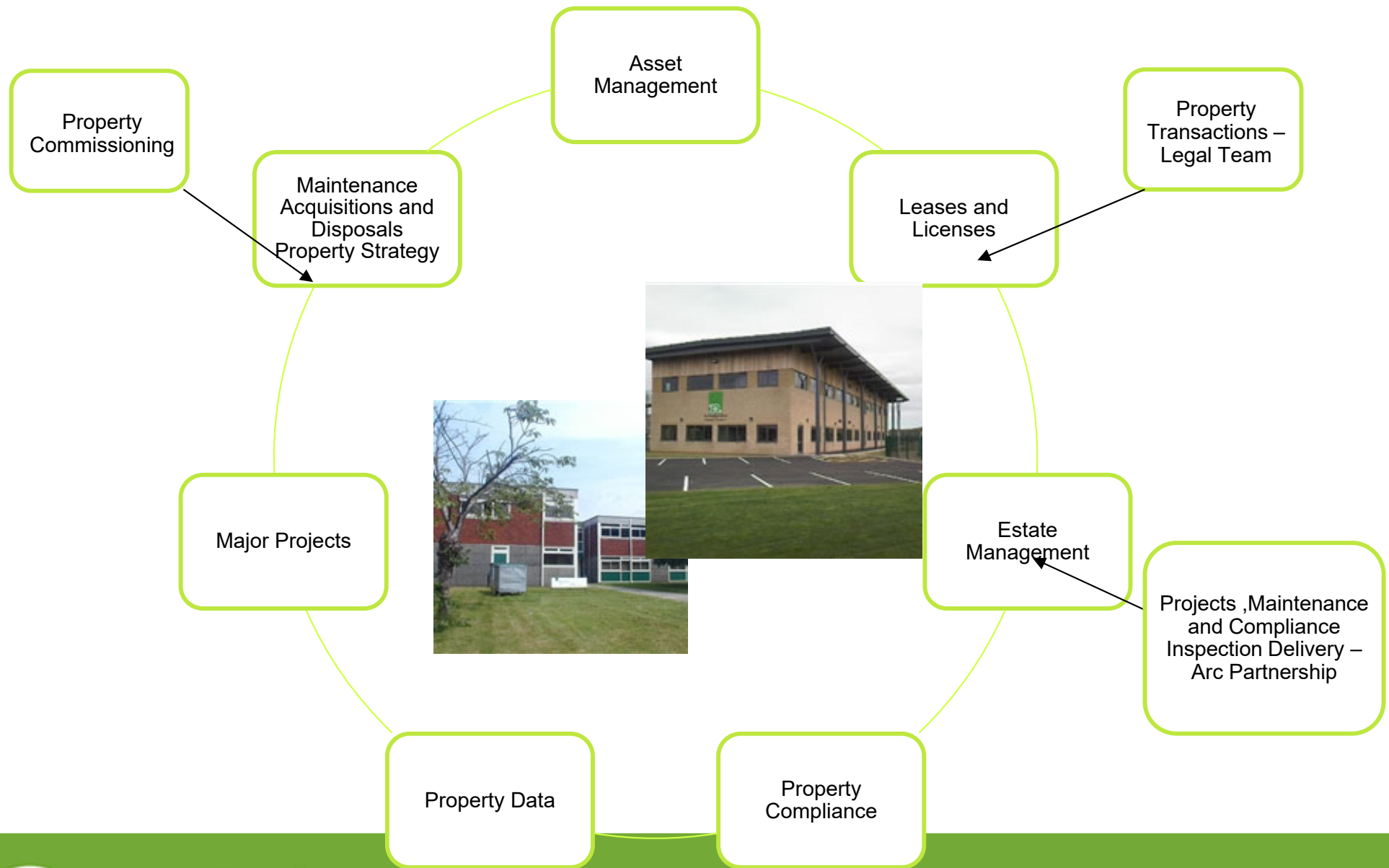
Lead: Sonja Smith

Lead: Nicola Stevens



**Nottinghamshire
County Council**

Property



**Nottinghamshire
County Council**

Catering & Facilities Management

- School catering - £18m annual turnover, 38,000 meals per day. 250 primary and secondary schools served. 900 employees.
- Cleaning and facilities management - £15.5m annual turnover, serving Council premises 300 schools and other public sector premises. 1000 employees.
- County Enterprise Foods – “meals on wheels” for Adult Social Care Clients, + paid for meals service and contracts. £4m annual turnover. Supported employment model.

Emergency Planning & Registration Services



- Planning and preparing for the County Councils part in a multi-agency response to an emergency affecting Nottinghamshire communities
- Business Continuity
- Safety of Sports Grounds
- Registration and Celebratory Services



Trading Standards & Communities

- **Trading Standards**
 - Weights & Measures, Food standards, Fair Trading/Fraud, Animal Health
 - Commercial Services
 - Regional Investigations Team
- **Communities**
 - Community Support Hub
 - Community Early Help & Support
 - Homes for Ukraine
 - Household Support Fund
 - Armed Forces & Queens Platinum Jubilee
 - Community safety



Highways & Transport

- Transport Strategy & Programmes (LTP)
- Traffic Manager Enforcement
- Highways Contract Management
- Flood Risk Management
- Countryside Access
- Transport: Travel Services
- Transport: Developments & Partnership



Place Commissioning

- Climate Emergency & Net Zero Strategy
- Energy and Carbon Management
- Waste Management
- Property Commissioning
- Schools PFI
- Cultural Services



Nottinghamshire
County Council