

# *Transforming health and social care in South Nottinghamshire*

*Rebecca Larder*  
*Director of Transformation*





**CityCare  
Partnership**  
County Health  
Partnerships

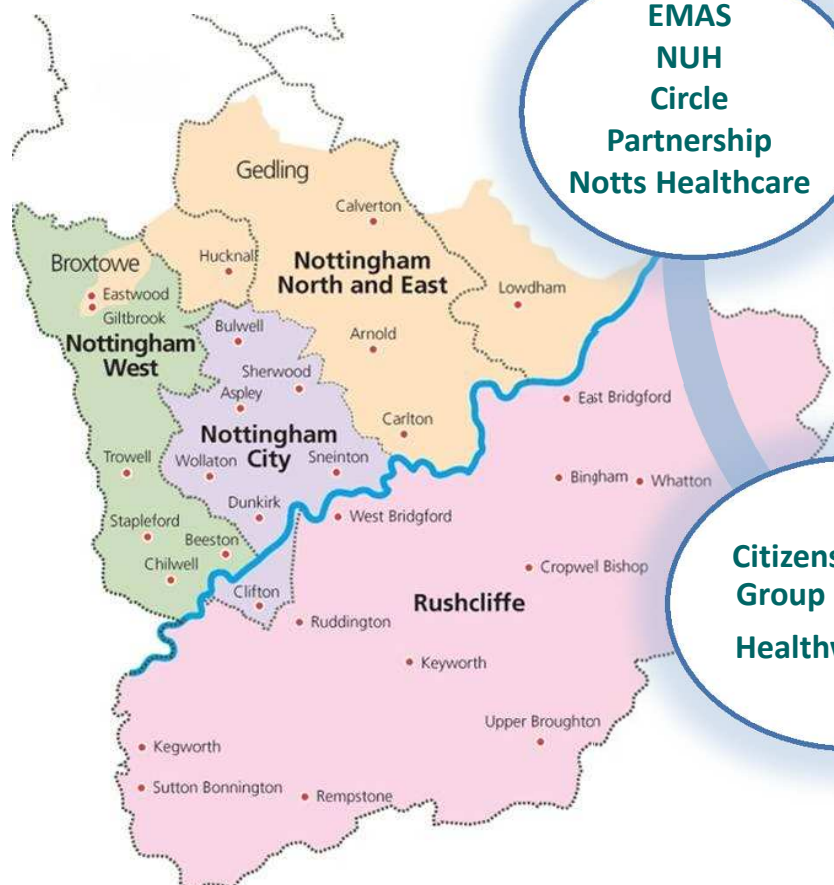
**Nottingham City  
Council**  
Nottinghamshire  
County Council

**South  
Nottinghamshire  
Transformation  
Partnership**

**NHS England  
City CCG  
NNE CCG  
Rushcliffe CCG  
West CCG**

**Citizens Advisory  
Group (CAG) rep**  
Healthwatch rep

**EMAS  
NUH  
Circle  
Partnership**  
Notts Healthcare



# Ambition



Care  
organised  
around  
individuals  
not  
institutions

Removal of  
organisational  
barriers  
enabling  
teams to work  
together

***“Creating a sustainable, high  
quality health and social care  
system for everyone.”***



Resources  
shifted to  
preventative,  
proactive care  
closer to  
home

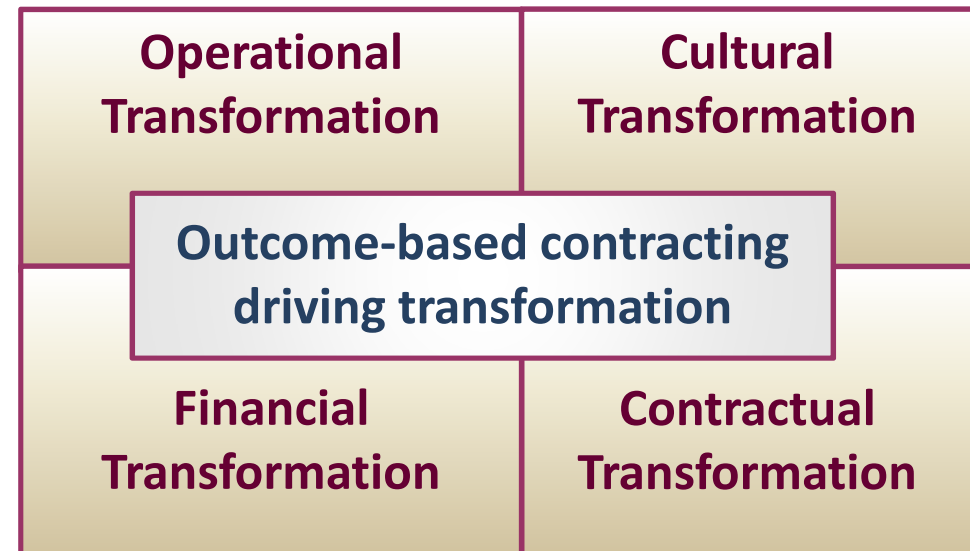
High quality,  
accessible,  
sustainable  
services

Services based  
on the real  
needs of the  
population

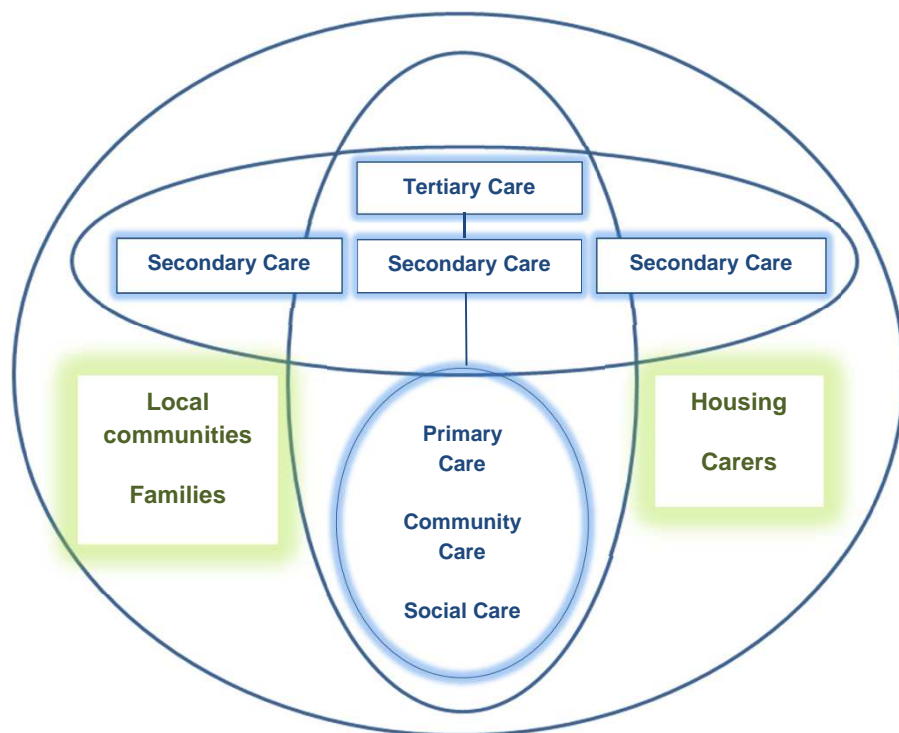
Hospital,  
residential  
and nursing  
homes only  
for people  
who need care  
there

## From Planning to Action

- Development of Strategic Sustainability Plan during 2015
- Greater Manchester's plan is setting out to describe how a clinically and financially sustainable landscape of commissioning and provision can be achieved over five years.



# Integrated Care – Incremental Building



## Integrated Care Hub

- A community based single point of access to health and social care
- Enabling proactive co-ordination of care to prevent admissions and support timely discharge
- Co-ordination of care includes rehabilitation services and social care response
- Development: September 2014 to April 2016



### Outcomes for the citizen

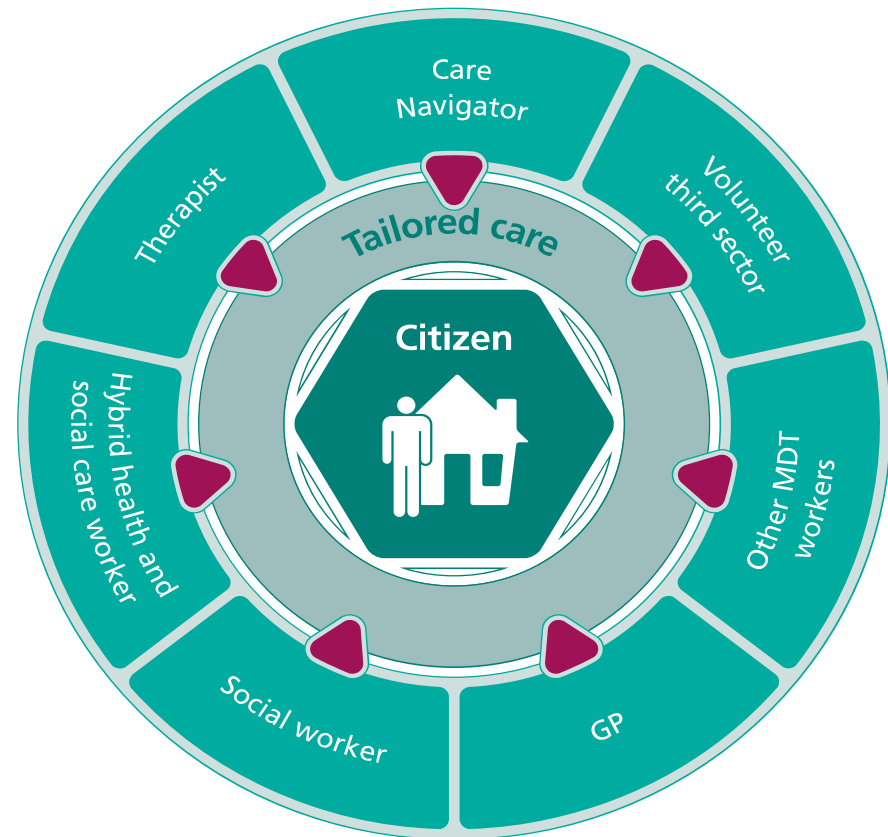




# Care Delivery Groups



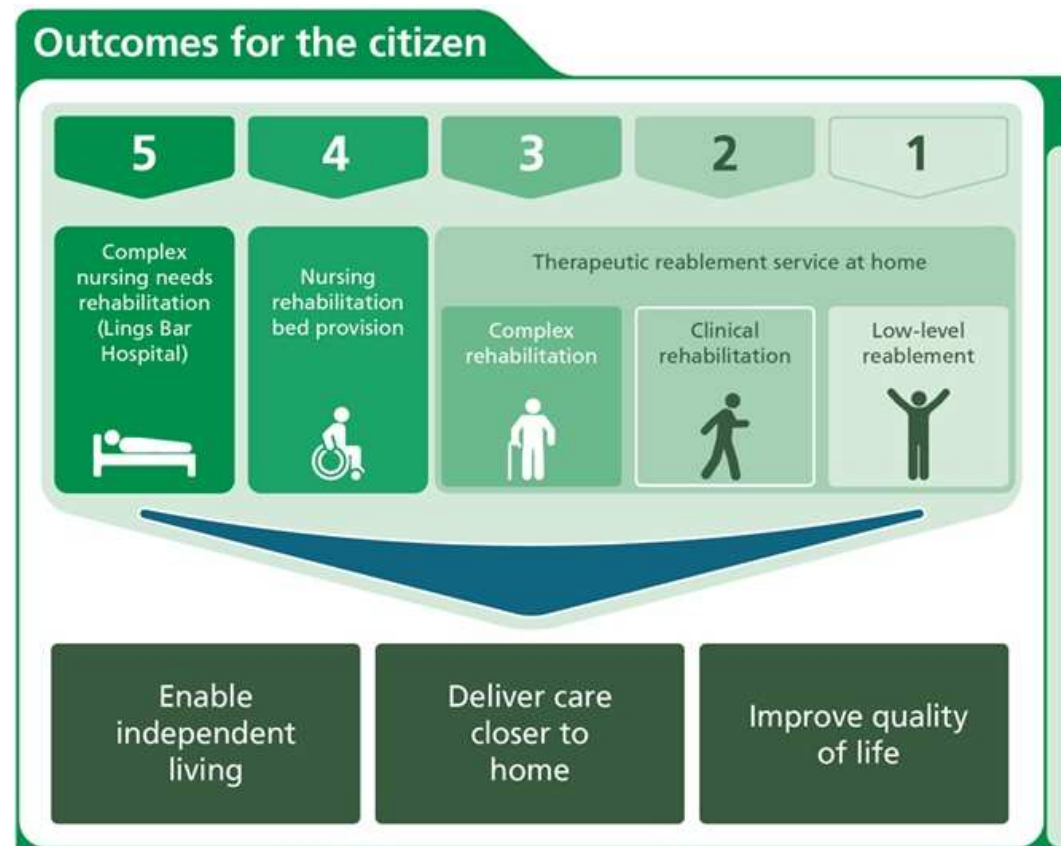
- Model of coordinated wrap-around care in the community
- Care navigation system with 3rd sector
- Initial focus on team alignment in Rushcliffe and Gedling
- Development September 2014 – April 2016



# Integrated Community Re-ablement



- Integrating community re-ablement services to:
  - Maximise independence and self-care
  - Promote faster recovery from illness
  - Prevent avoidable admissions, premature admissions to long-term residential care and support timely transfers of care from hospital
- Development: April 2014 to April 2017





# Better Care Fund

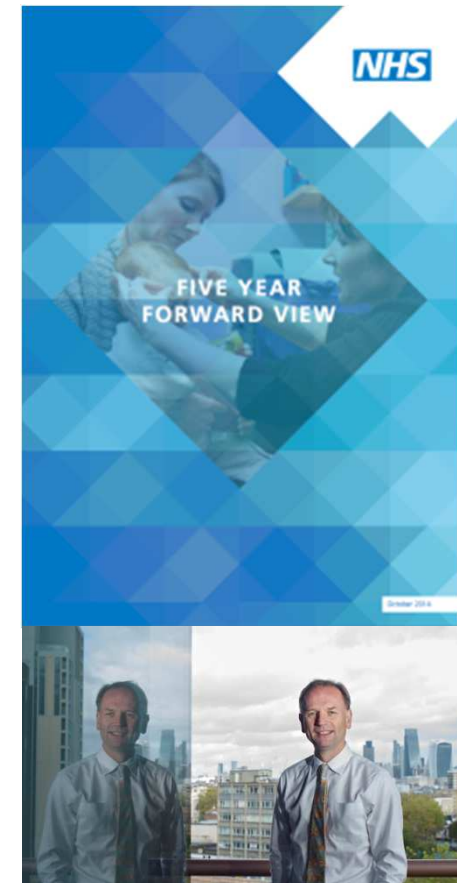


- **7 day services and GP Access**
- **Proactive and Personalised Care**
  - Named GPs for the over 75s
  - Proactive case management for people with complex needs
- **Community Care Co-ordination/ Intermediate Care/ Re-ablement**
- **Support for Carers**
  - Dementia 'Compass' support worker
  - End of Life Carers Service
  - Direct payments for Carers breaks
- **Additional Support for Social Care**
  - Interim home care services
  - Additional social work and occupational therapy capacity in the acute and community settings



# Multi-specialty Community Providers

- Build on strengths of primary care and being the focal point for wide ranging care
- Primary care employing or partnering with specialists to work alongside community health and care staff
- 'Shifting' the majority of outpatient and ambulatory care to the community as well as providing other services such as diagnostics, dialysis and chemotherapy
- Drawing on 'renewable energy' of carers, volunteers and service users with a key focus on changing health behaviours
- Potentially taking delegated responsibility for managing the health service budget for their registered population



# Rushcliffe MCP

- Primary care organisation forms the base component
- Principia and Partners Health
- Culture of mutual accountability, commitment and pride
- Model of integrated care focussed on early intervention, living well at home and avoiding unnecessary use of the hospital
- Impacting on fragmentation, delays, duplication and inefficiencies experienced by service users and carers
- Care will be delivered closer to patients' homes resulting in an enhanced experience and improved clinical outcomes, and better use of available resources
- 2015/16 intensive support from NHS England



# Integrated Care Pioneer



- Wave 1 focus on integrated commissioning and provision
- Wave 2 focus on whole systems transformation
- Bespoke support co-ordinated by NHS England with access to national expertise / partners
- Networking groups to resolve common challenges
- Evaluation by Policy Research Innovation Unit (PRIU); plus regular tracking of operational metrics





# Outcomes-based Commissioning – an enabler

- Current commissioning system is not fit for purpose
- Outcomes based commissioning:
  - Payment for outcomes
  - Fixed budget for a population's care
  - Incentives for systems of care
  - Provides better value
- South Notts case for change made and commissioning intentions confirmed
- Progress during 2015/16



Thank you  
...questions?

