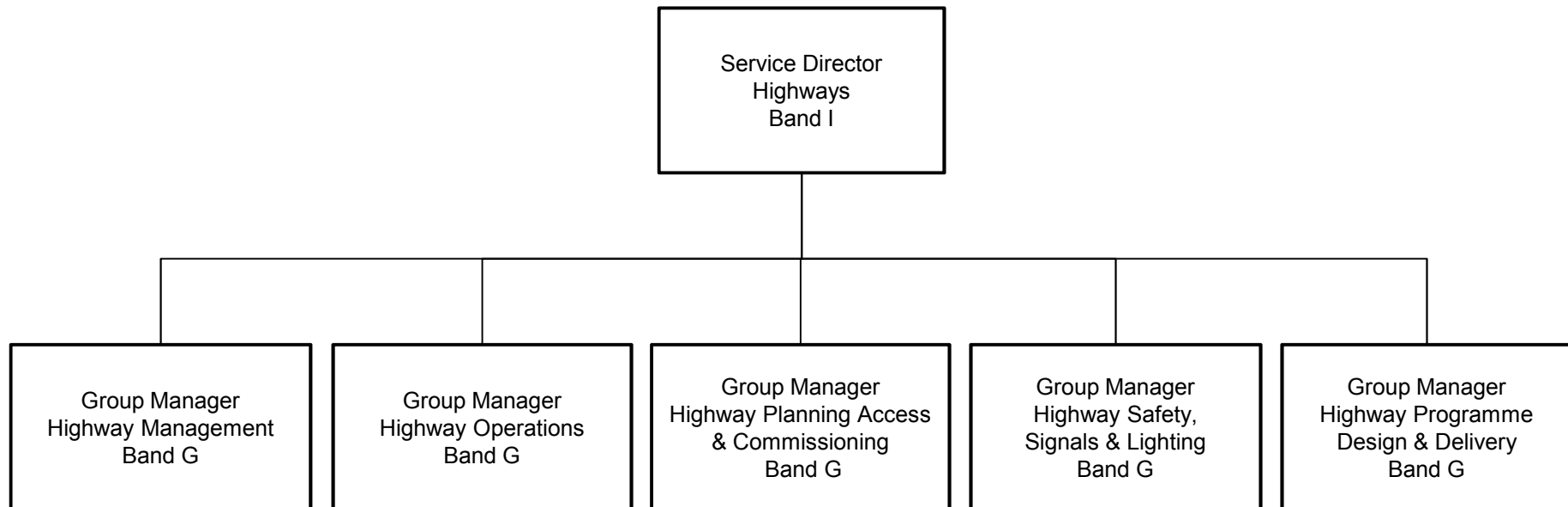
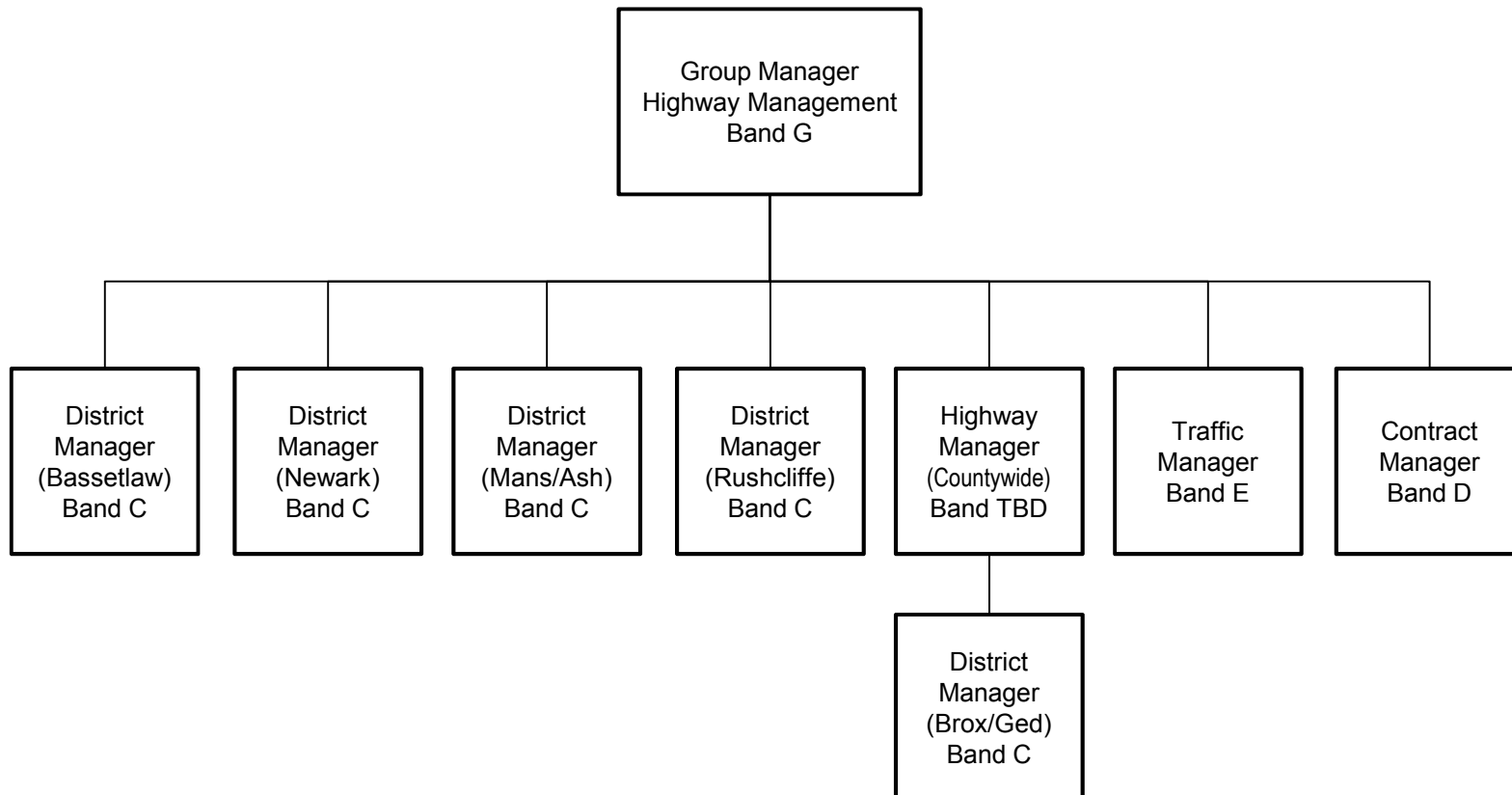


HIGHWAYS DIVISION

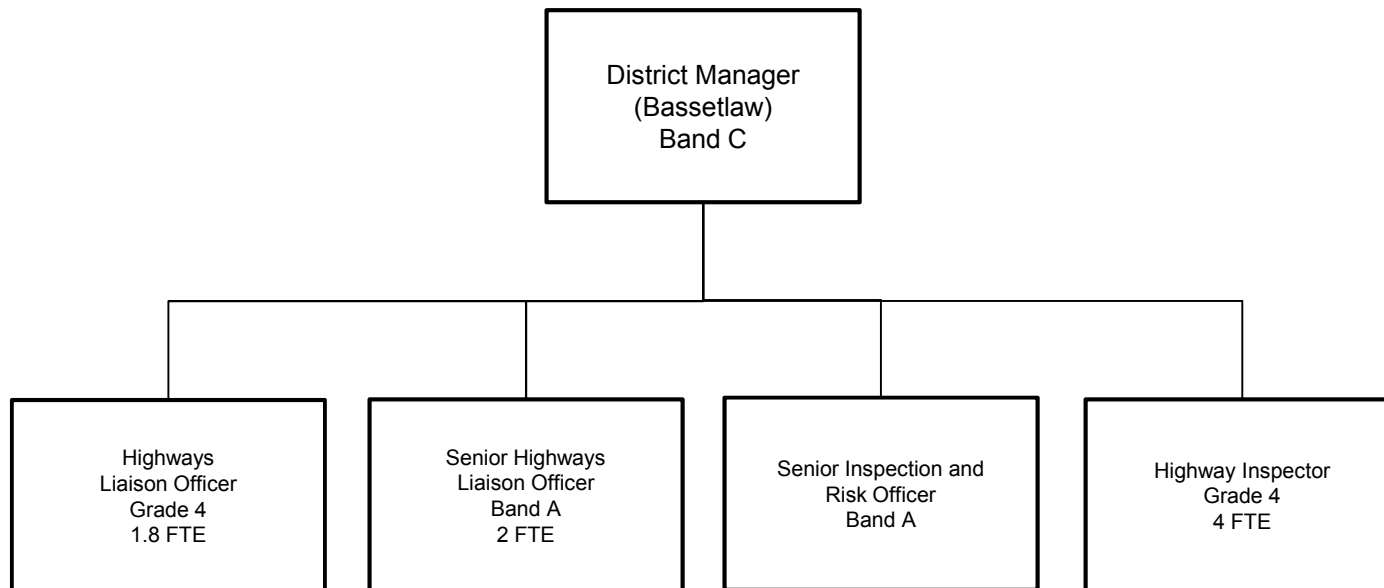


HIGHWAY MANAGEMENT



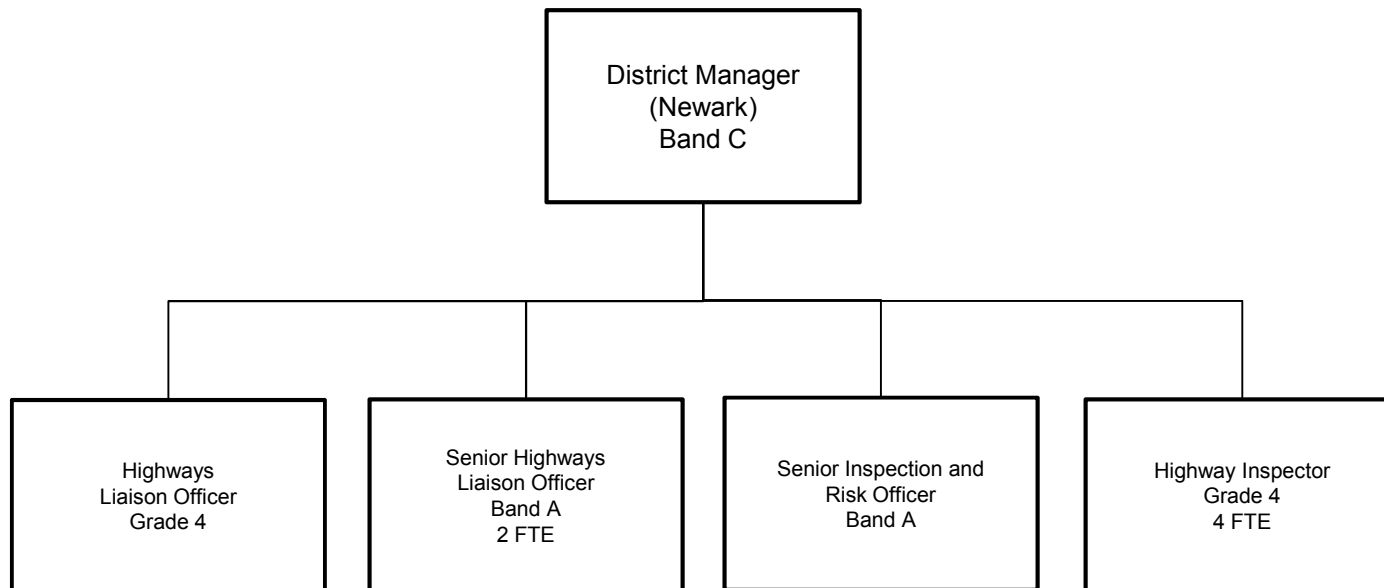
DISTRICT MANAGER (BASSETLAW)

Post numbers shown are
full time equivalents



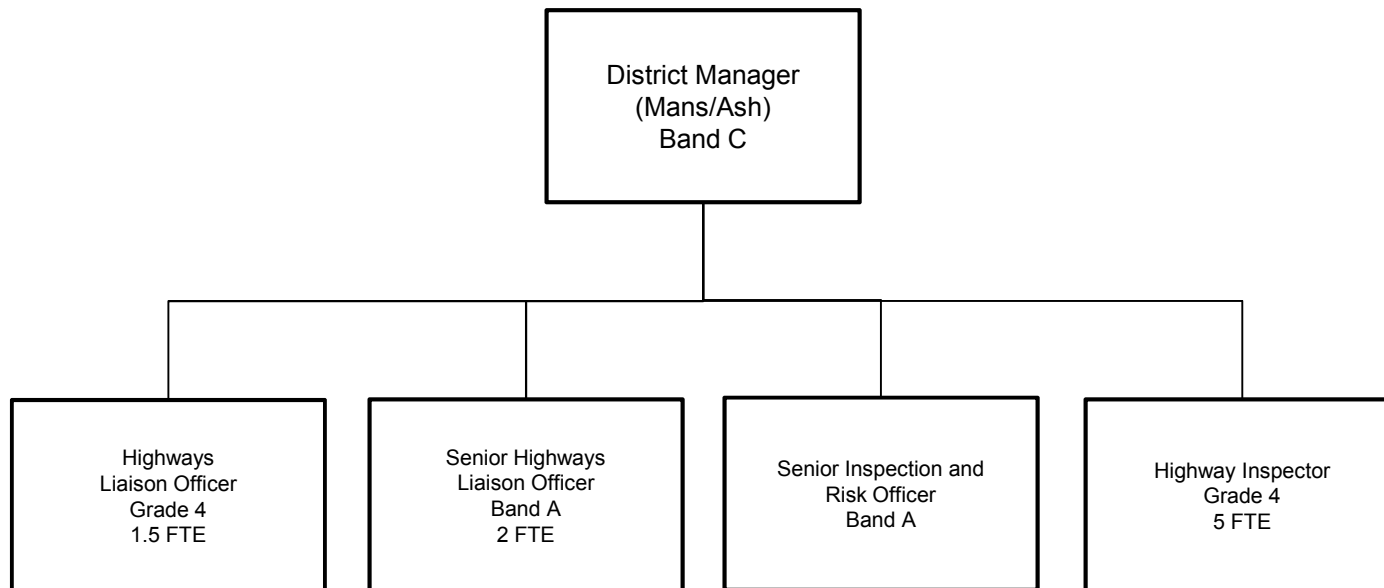
DISTRICT MANAGER (NEWARK)

Post numbers shown are
full time equivalents



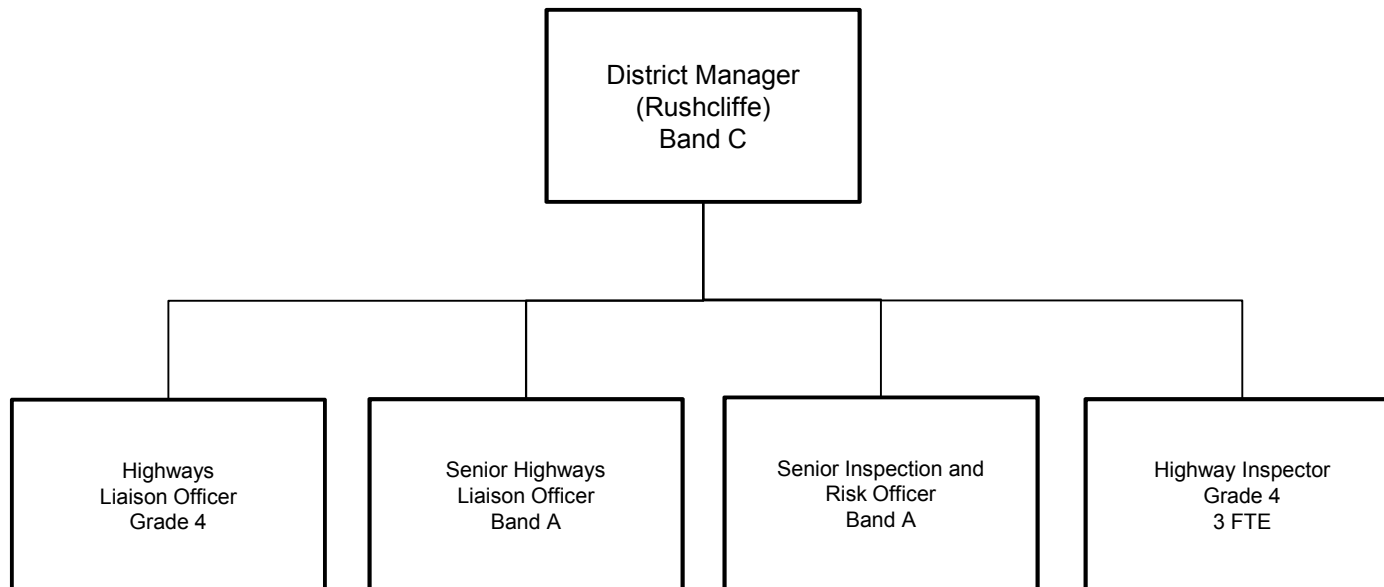
DISTRICT MANAGER (MANSFIELD/ASHFIELD)

Post numbers shown are
full time equivalents



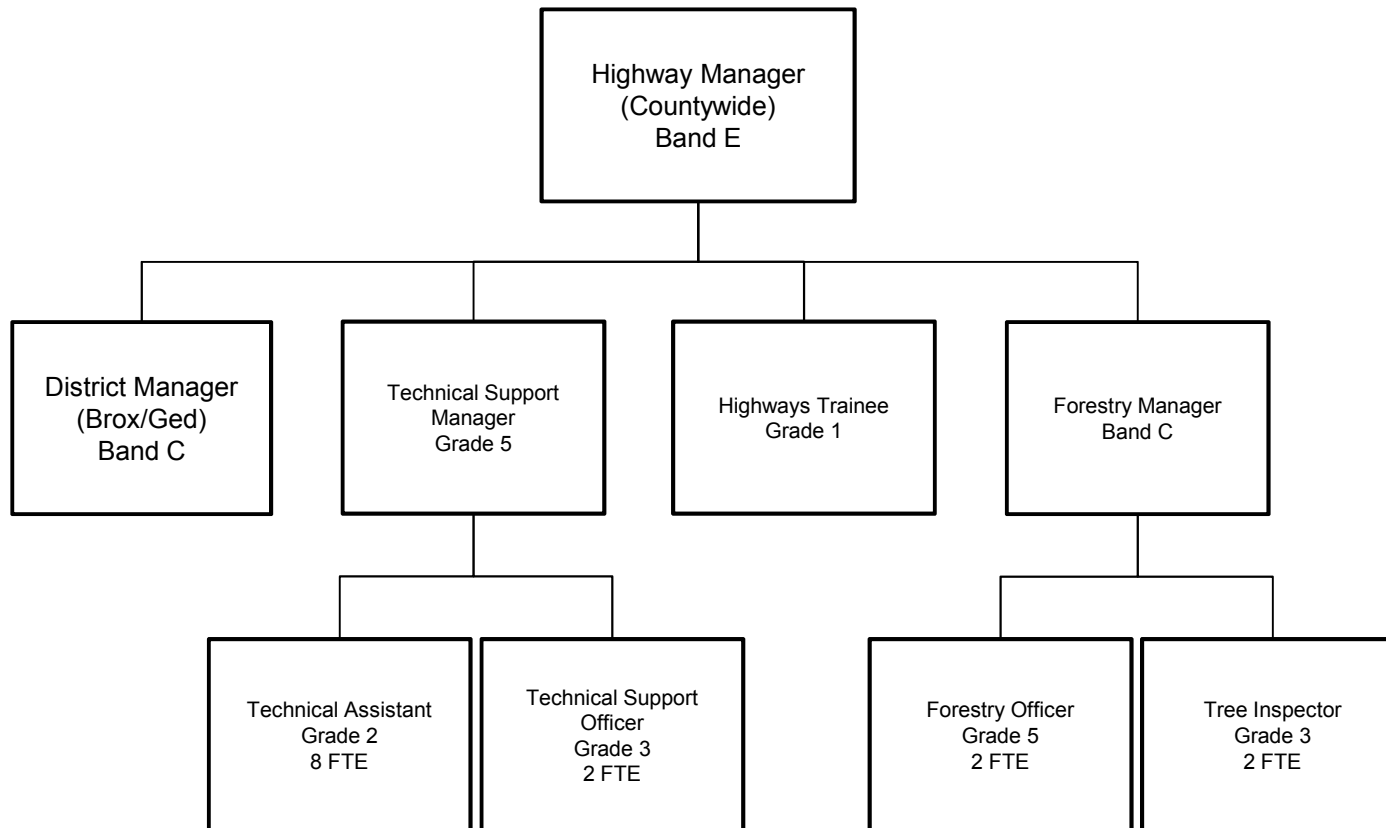
DISTRICT MANAGER (RUSHCLIFFE)

Post numbers shown are
full time equivalents



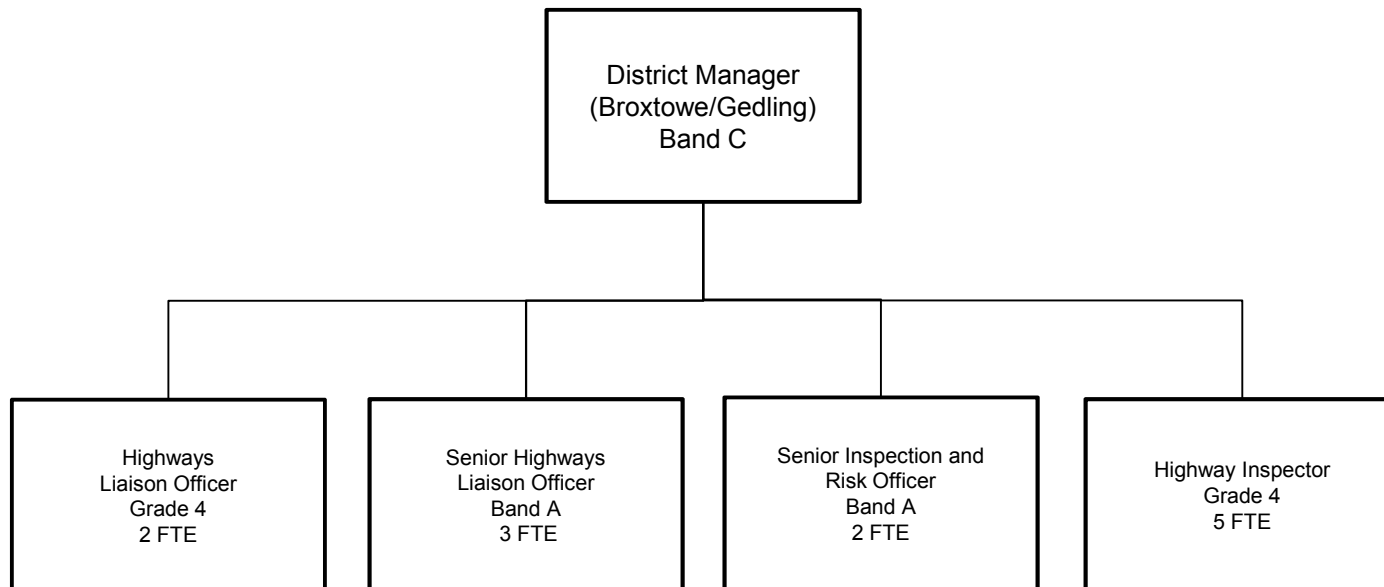
HIGHWAY MANAGER (COUNTYWIDE)

Post numbers shown are
full time equivalents



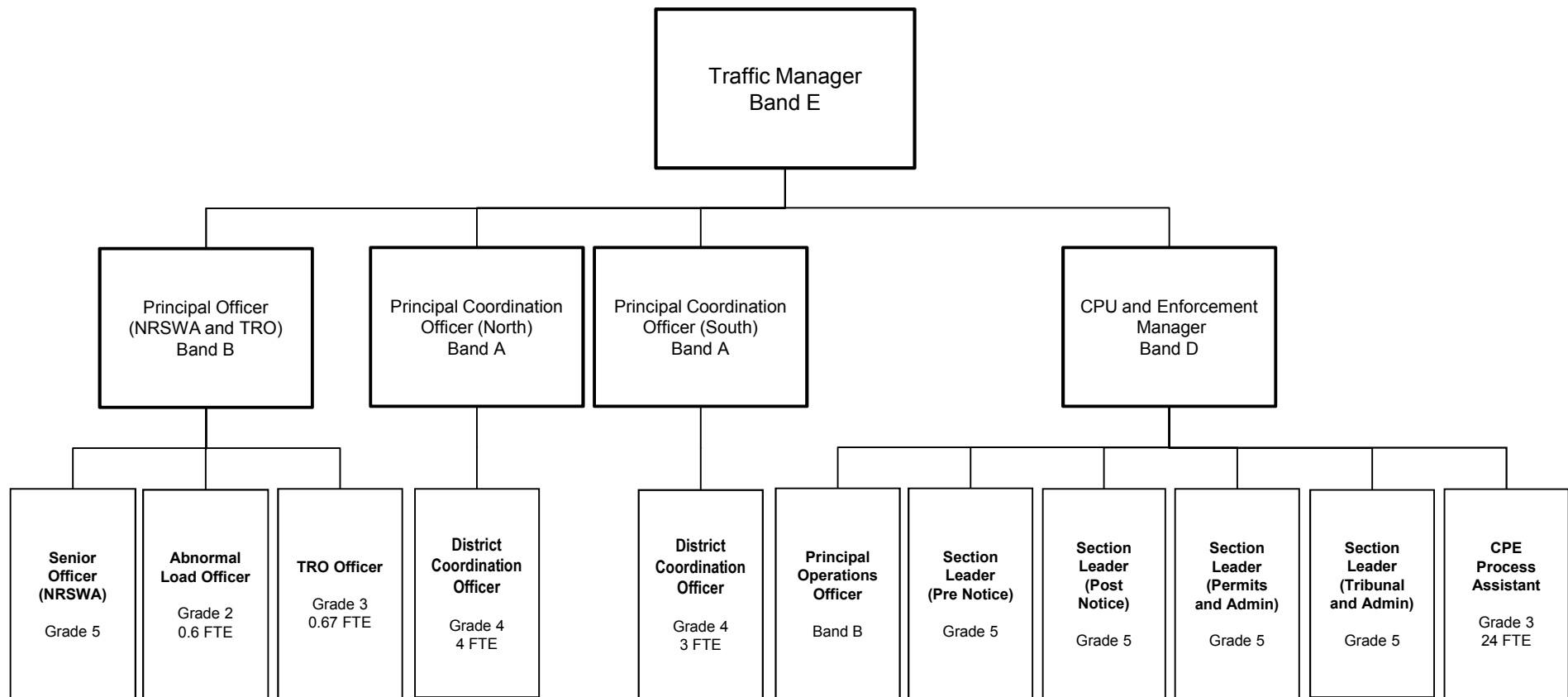
DISTRICT MANAGER (BROXTOWE/GEDLING)

Post numbers shown are
full time equivalents



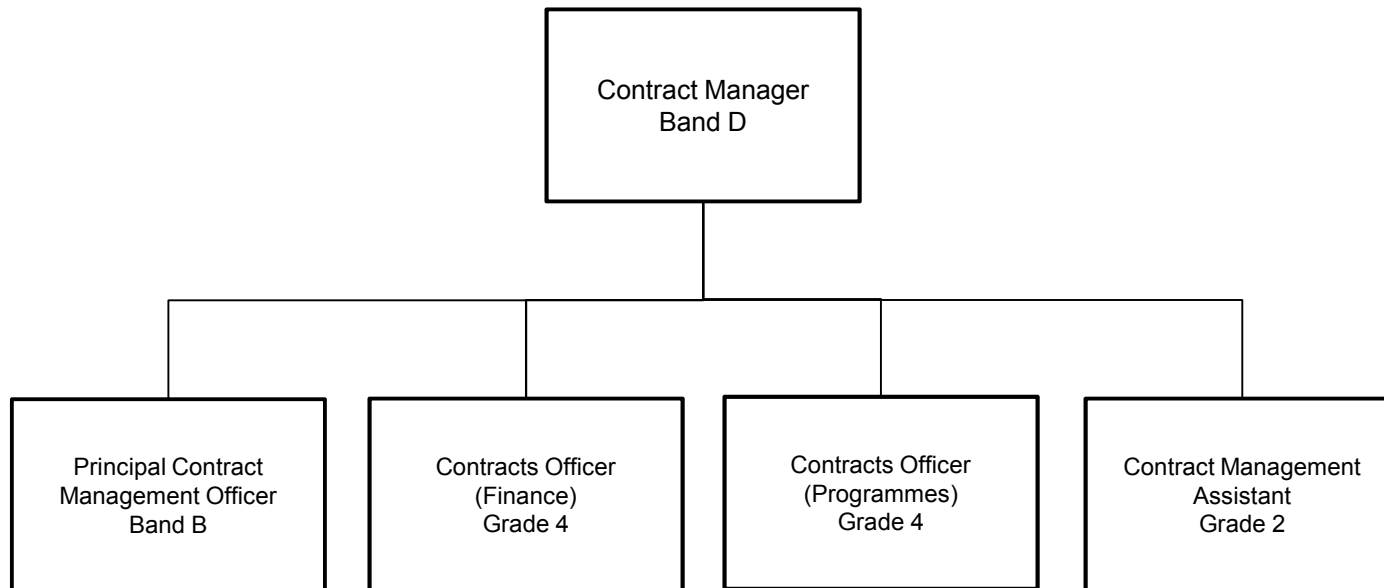
TRAFFIC MANAGER

Post numbers shown are
full time equivalents

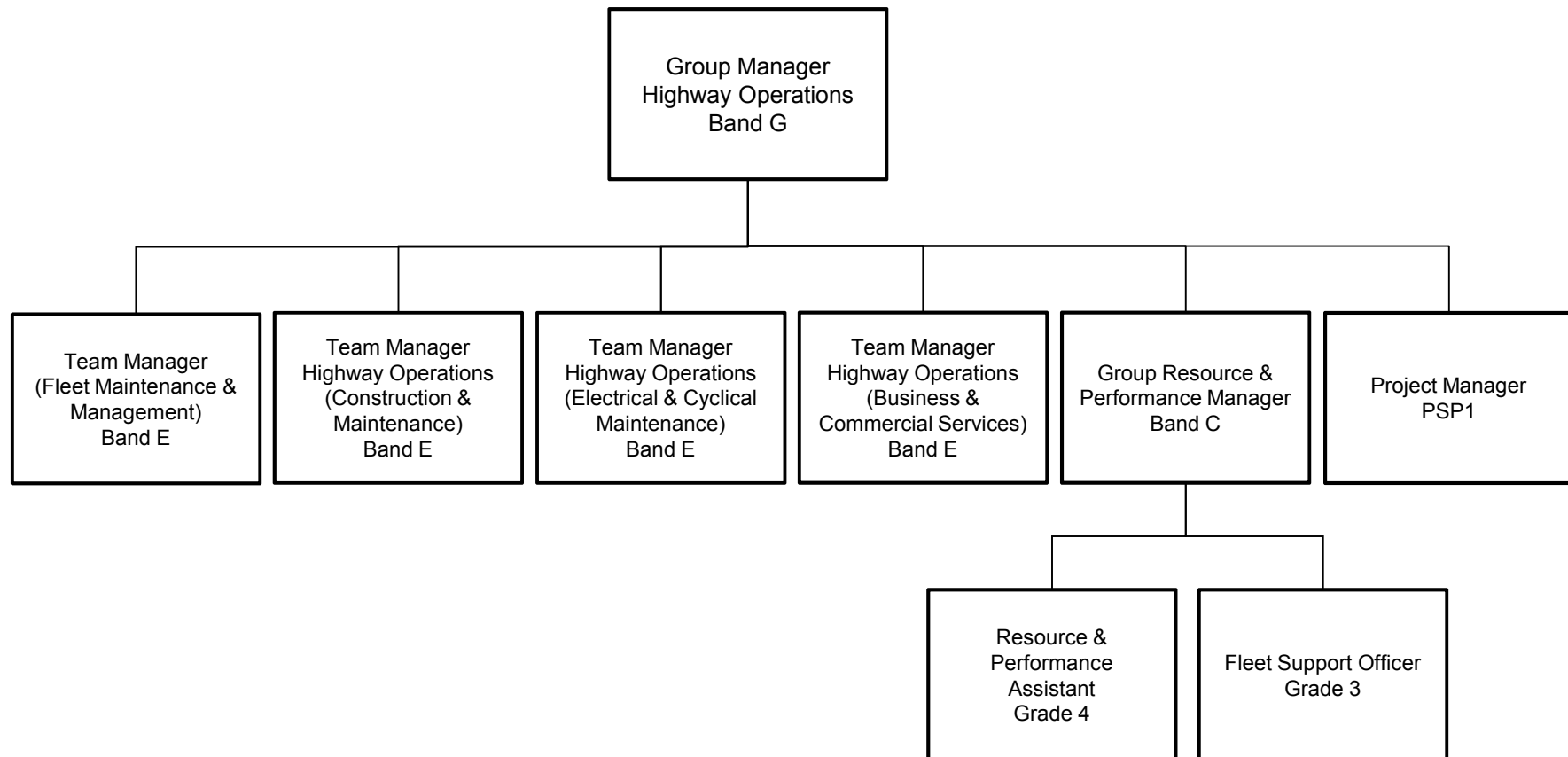


CONTRACT MANAGER

Post numbers shown are
full time equivalents

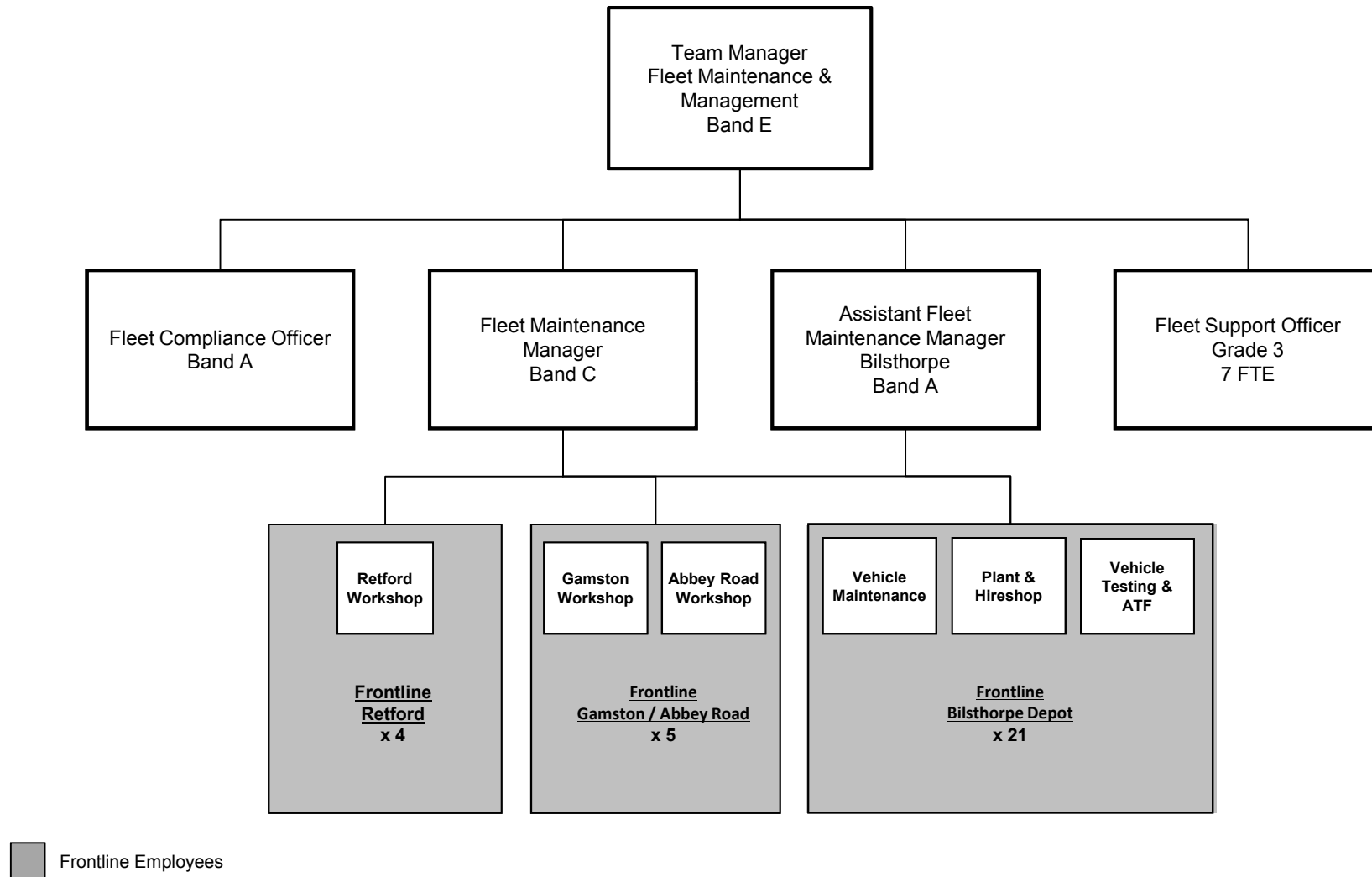


HIGHWAY OPERATIONS

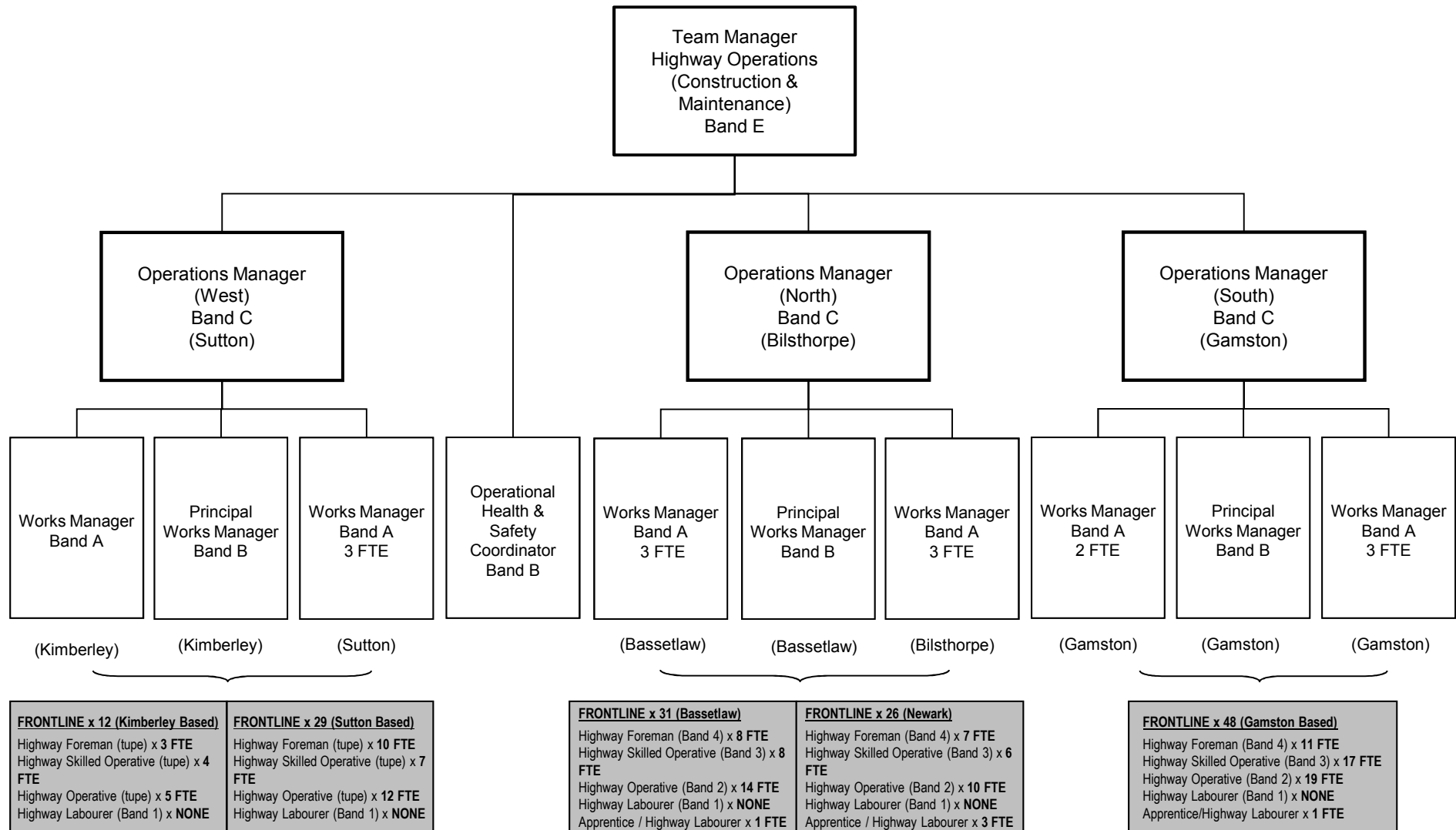


FLEET MAINTENANCE & MANAGEMENT

Post numbers shown are
full time equivalents



CONSTRUCTION AND MAINTENANCE

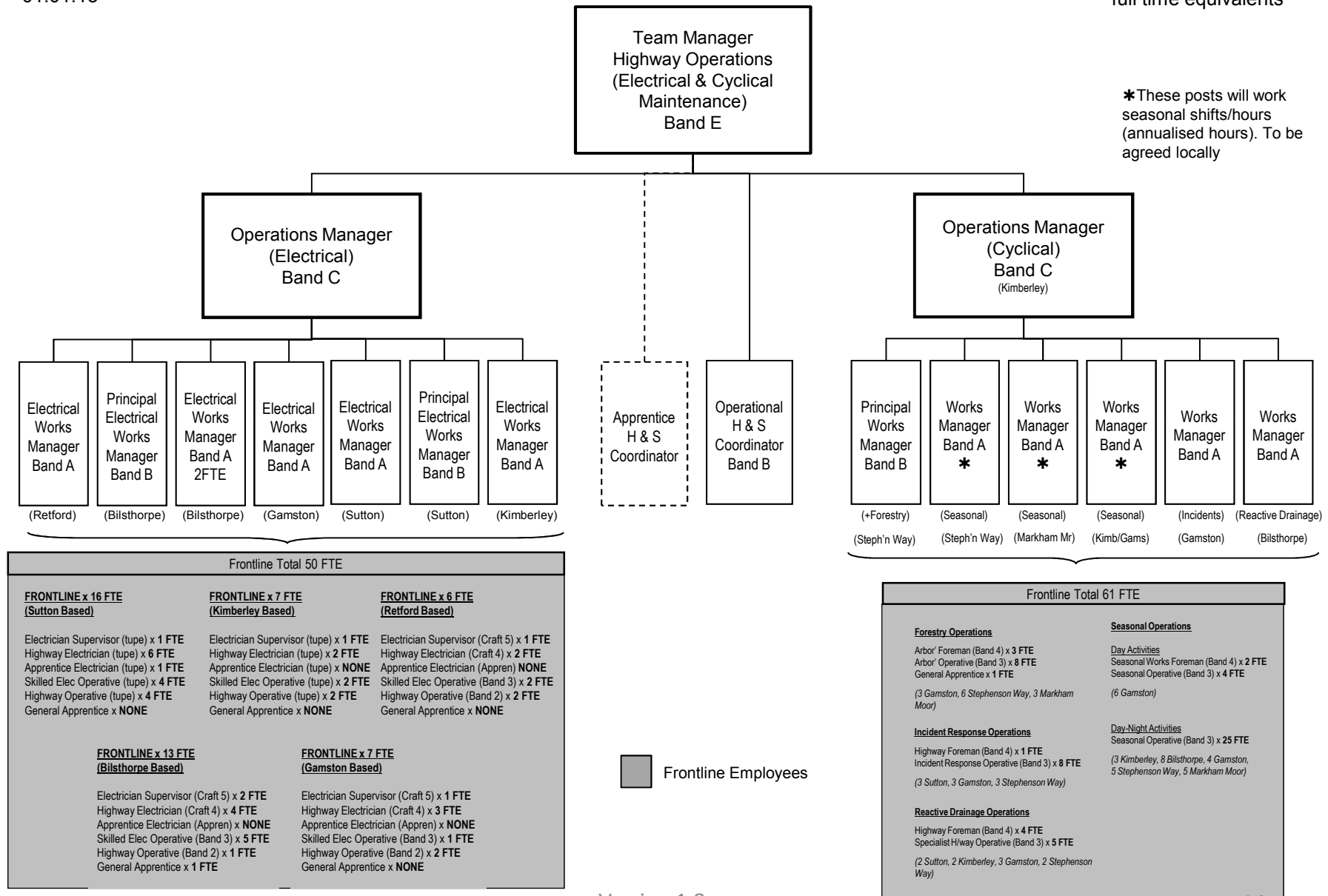


Frontline Employees

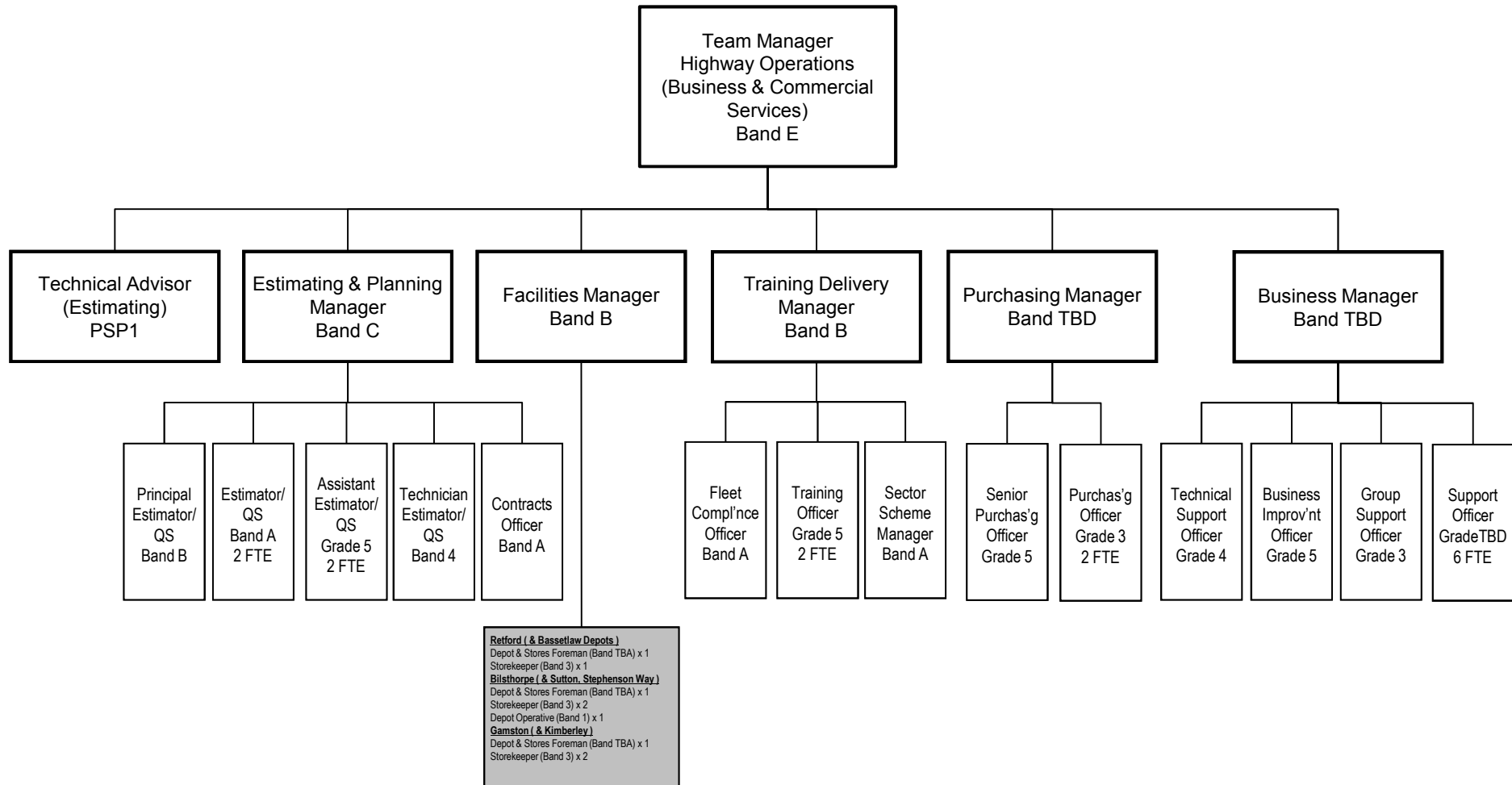
ELECTRICAL & CYCLICAL MAINTENANCE

Post numbers shown are
full time equivalents

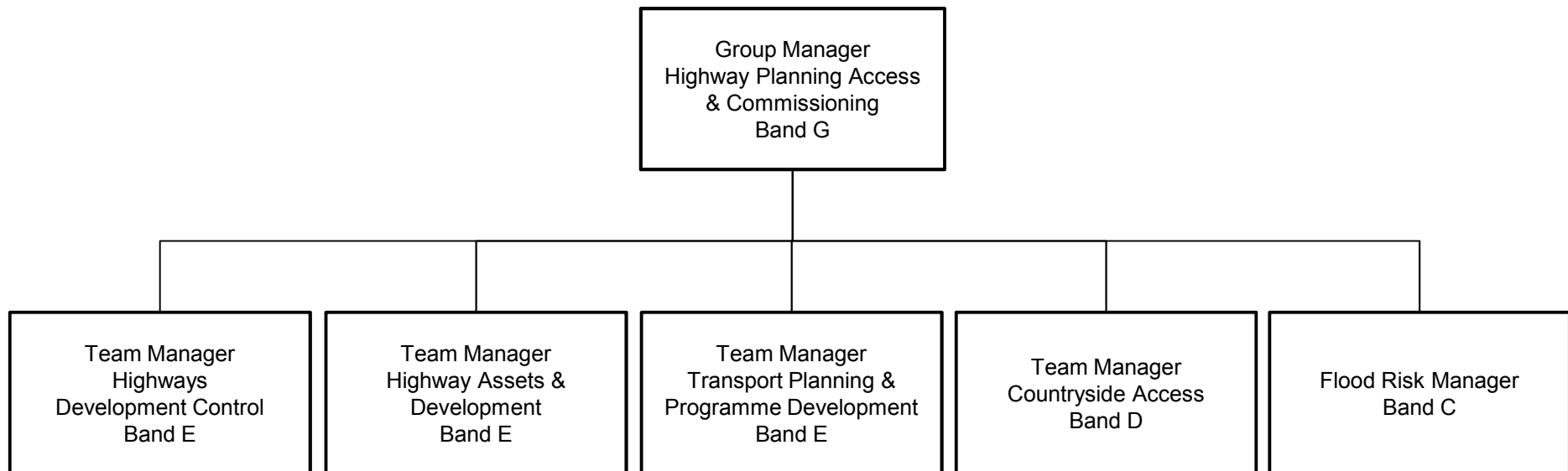
*These posts will work
seasonal shifts/hours
(annualised hours). To be
agreed locally



BUSINESS & COMMERCIAL SERVICES

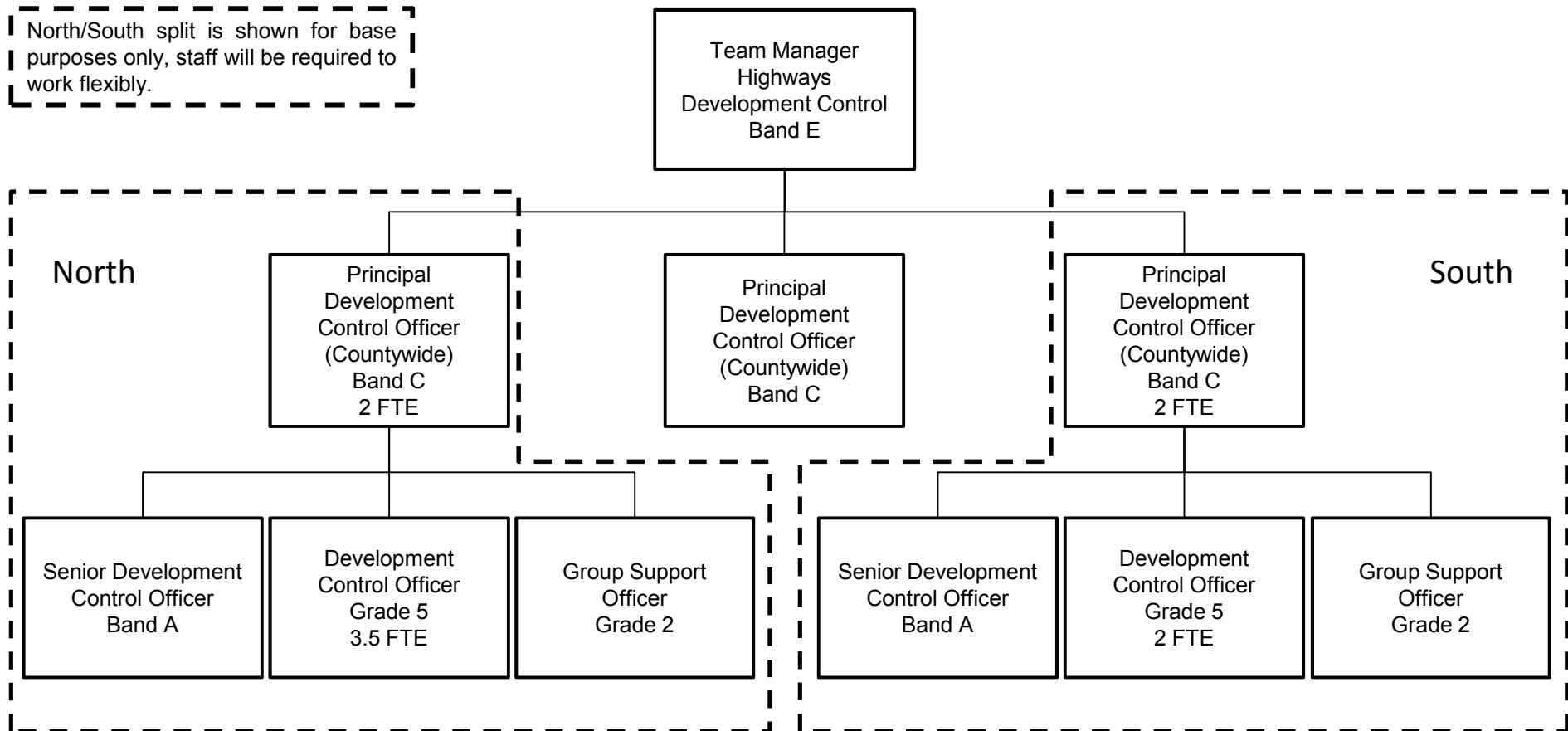


HIGHWAY PLANNING ACCESS & COMMISSIONING



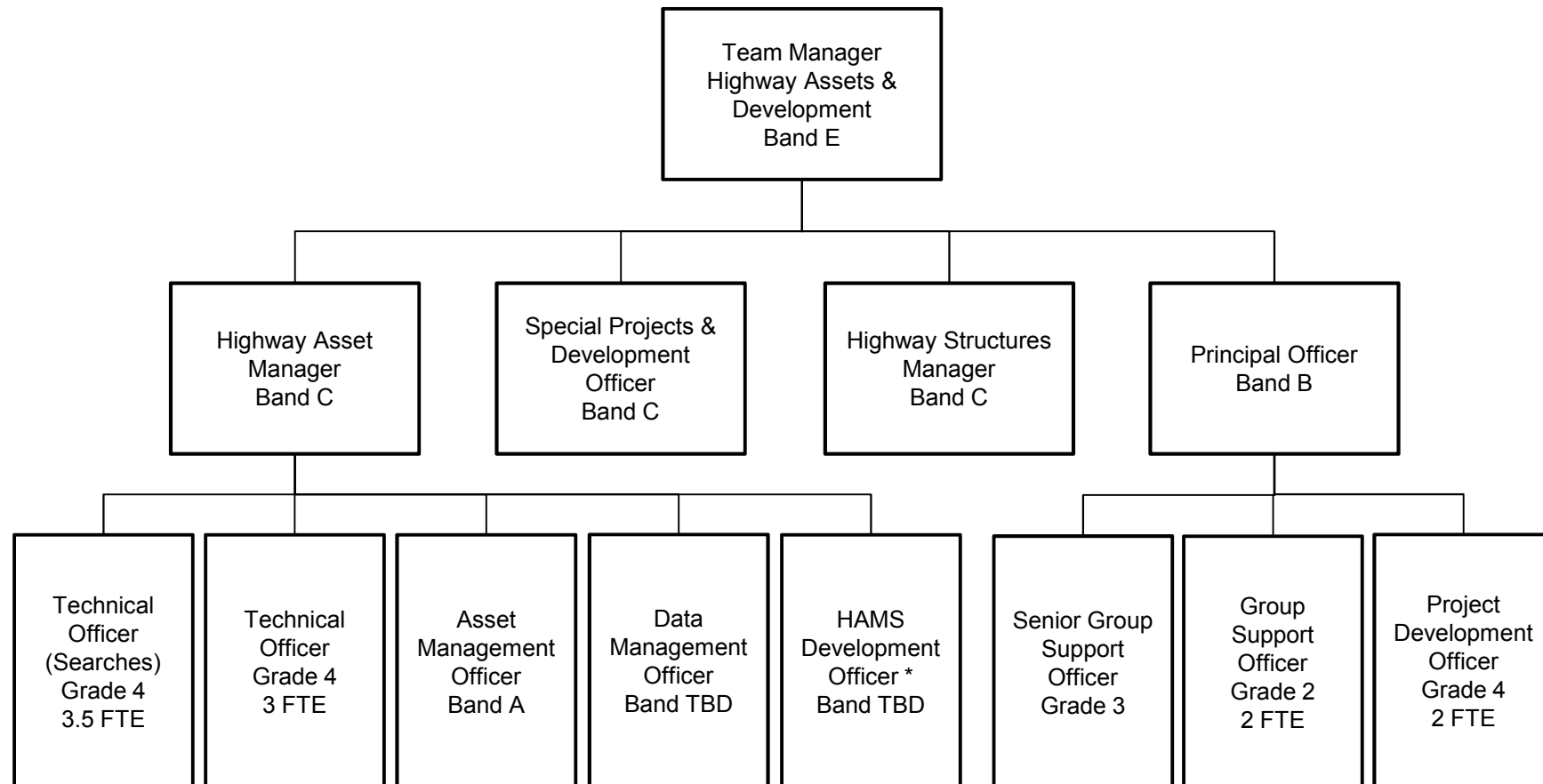
HIGHWAYS DEVELOPMENT CONTROL

Post numbers shown are
full time equivalents



HIGHWAY ASSETS & DEVELOPMENT

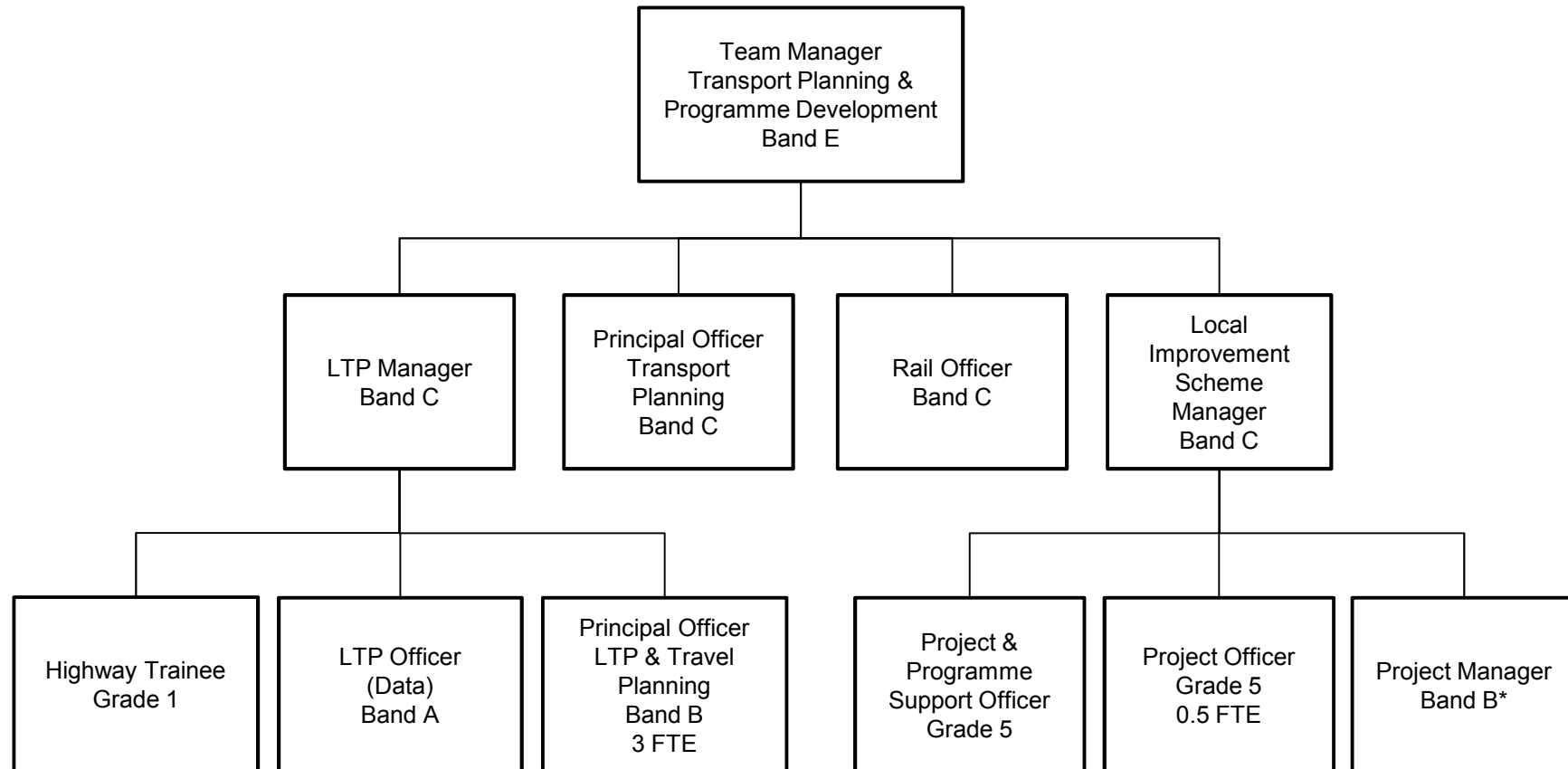
Post numbers shown are
full time equivalents



*2 Year Temporary

TRANSPORT PLANNING & PROGRAMME DEVELOPMENT

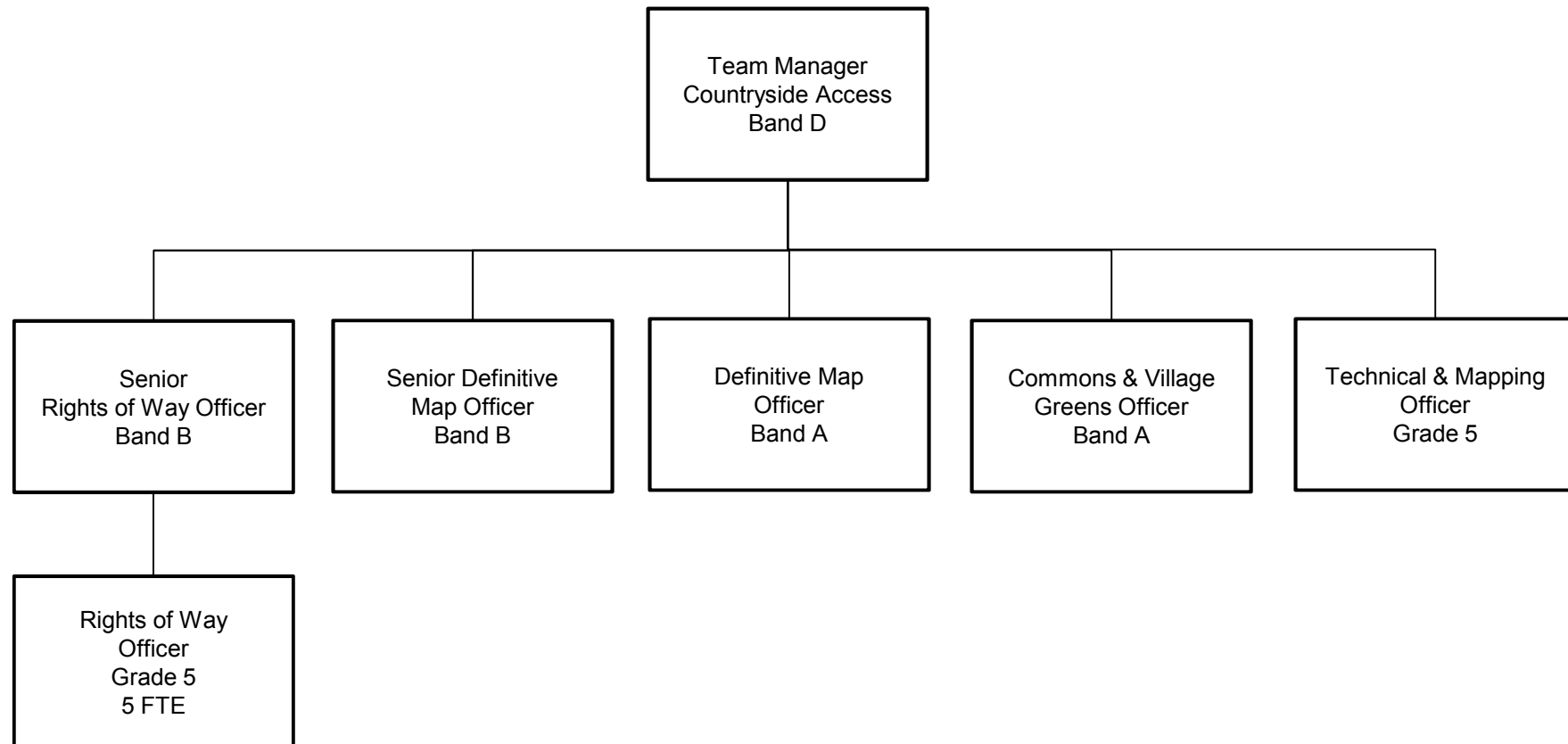
Post numbers shown are
full time equivalents



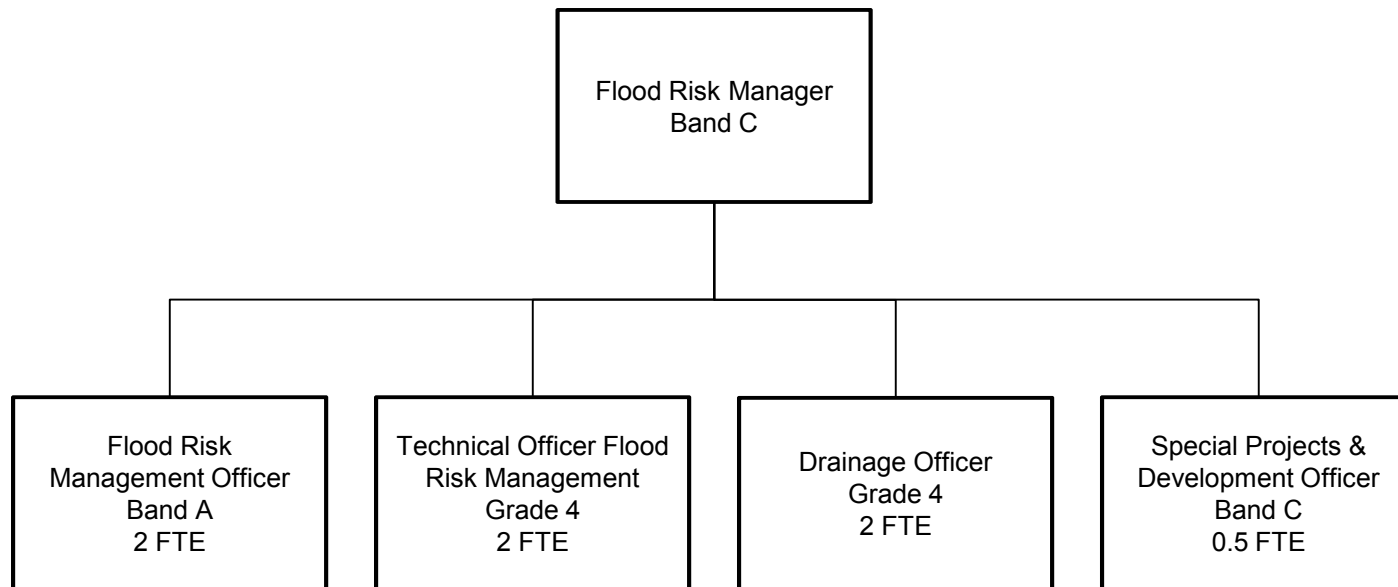
*2 Year Temporary

COUNTRYSIDE ACCESS

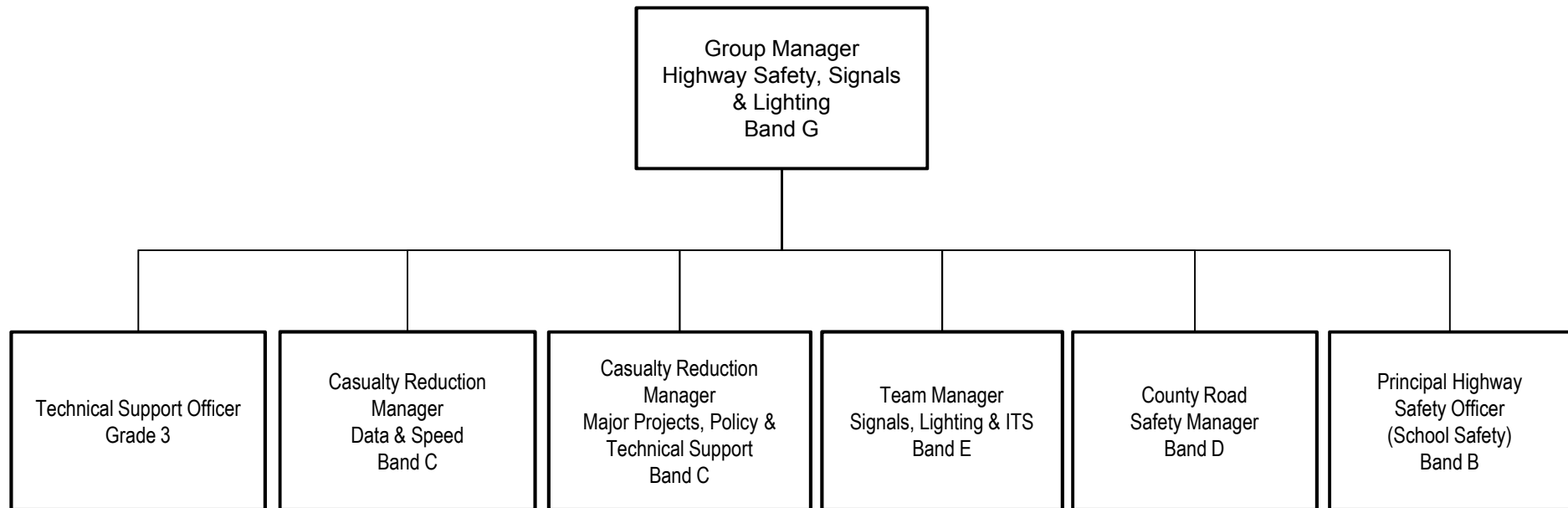
Post numbers shown are
full time equivalents



FLOOD RISK MANAGEMENT

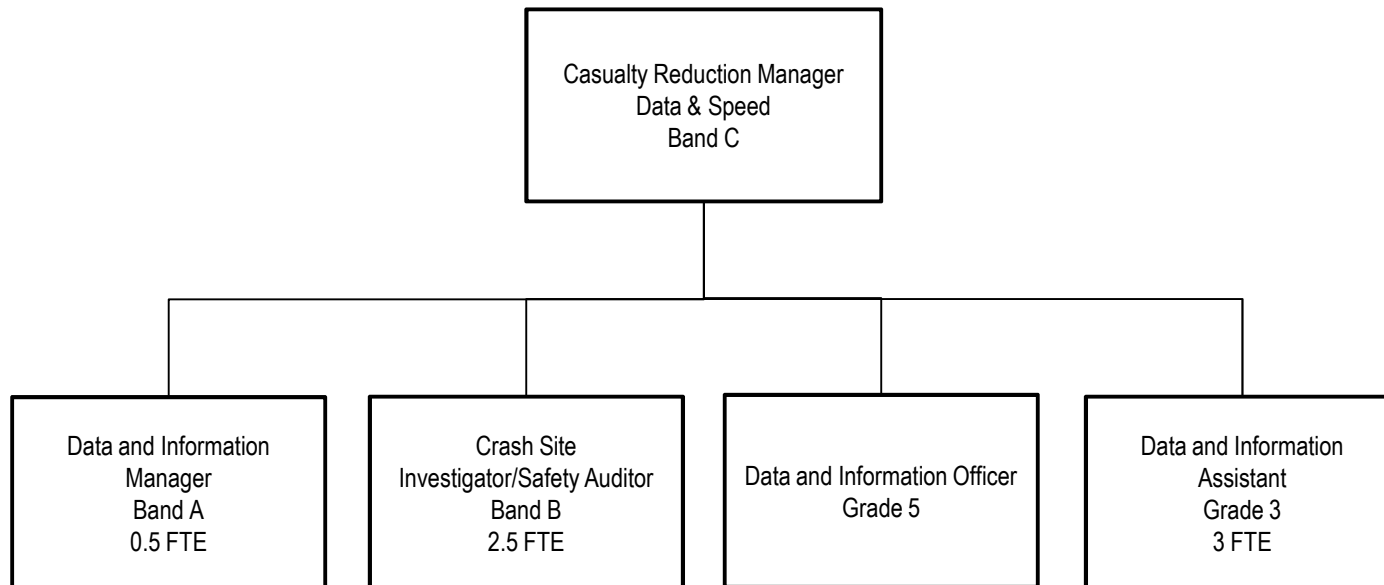


HIGHWAY SAFETY, SIGNALS & LIGHTING



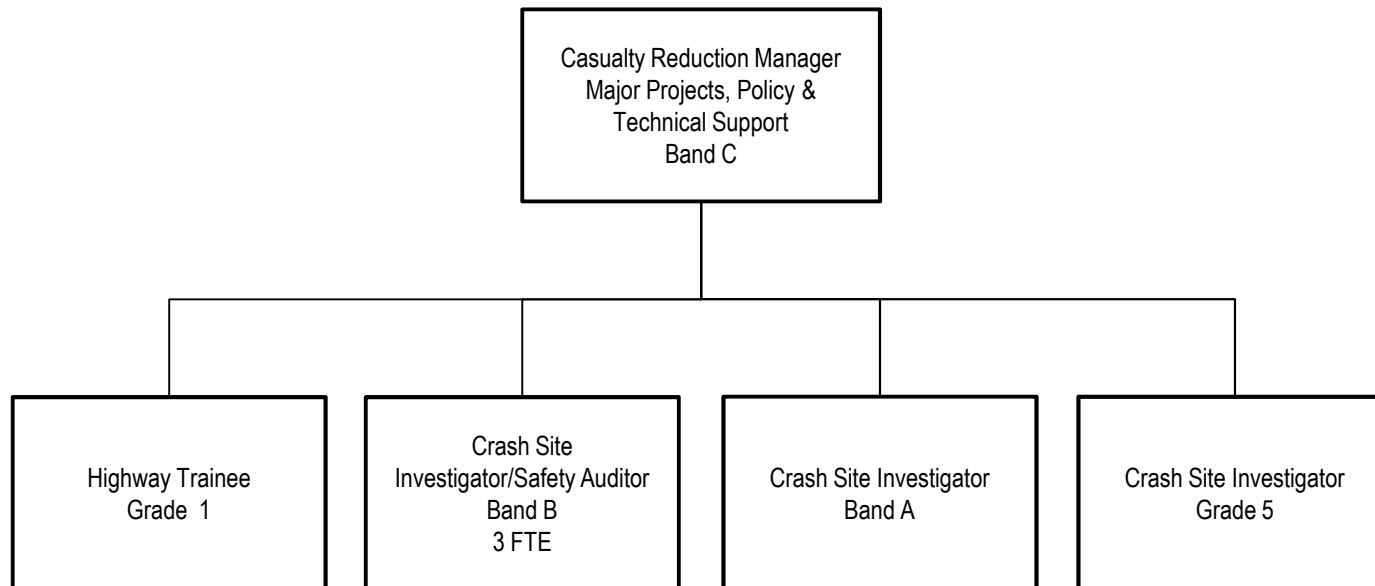
CASUALTY REDUCTION DATA & SPEED

Post numbers shown are
full time equivalents



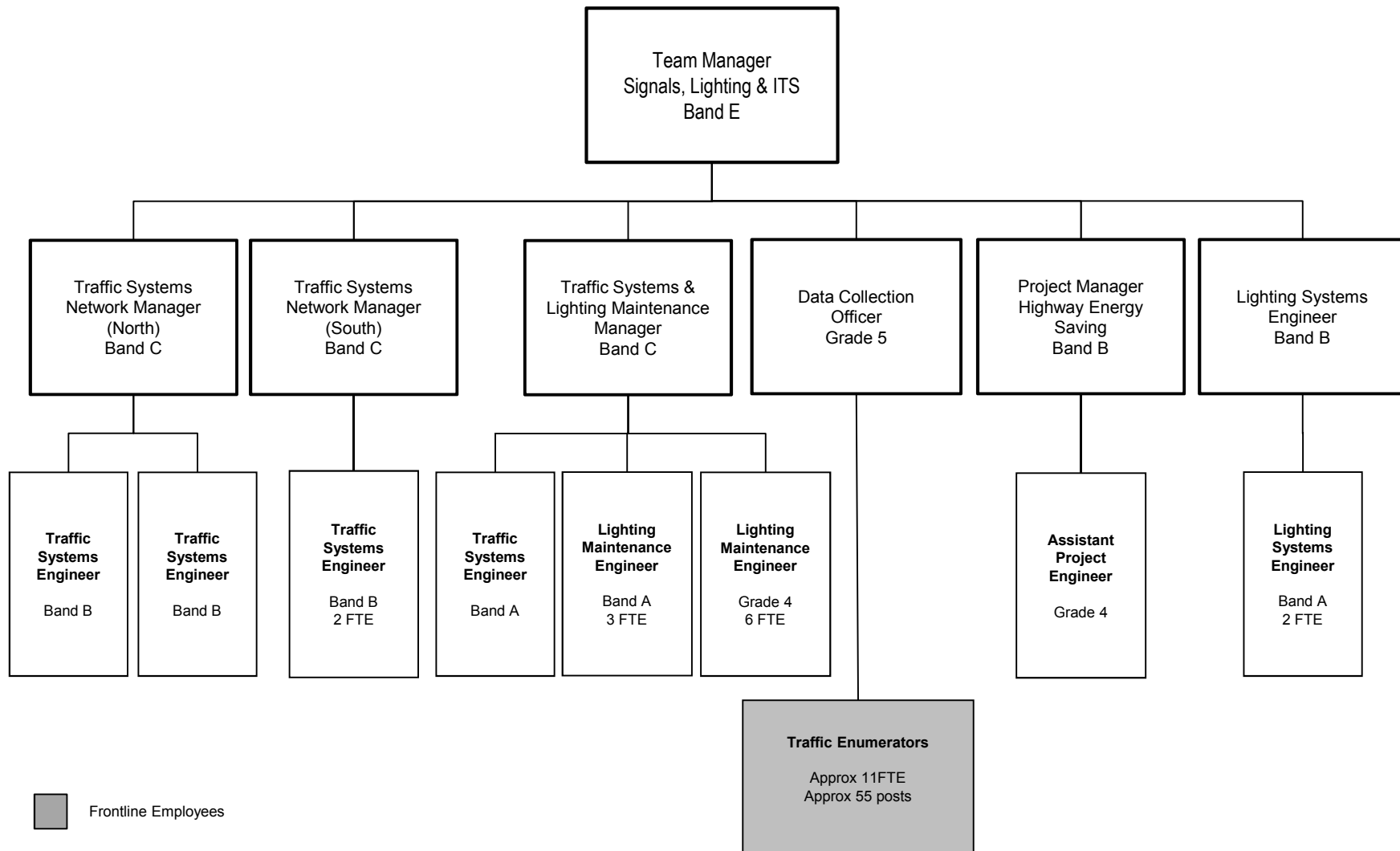
CASUALTY REDUCTION MAJOR PROJECTS, POLICY & TECHNICAL SUPPORT

Post numbers shown are
full time equivalents



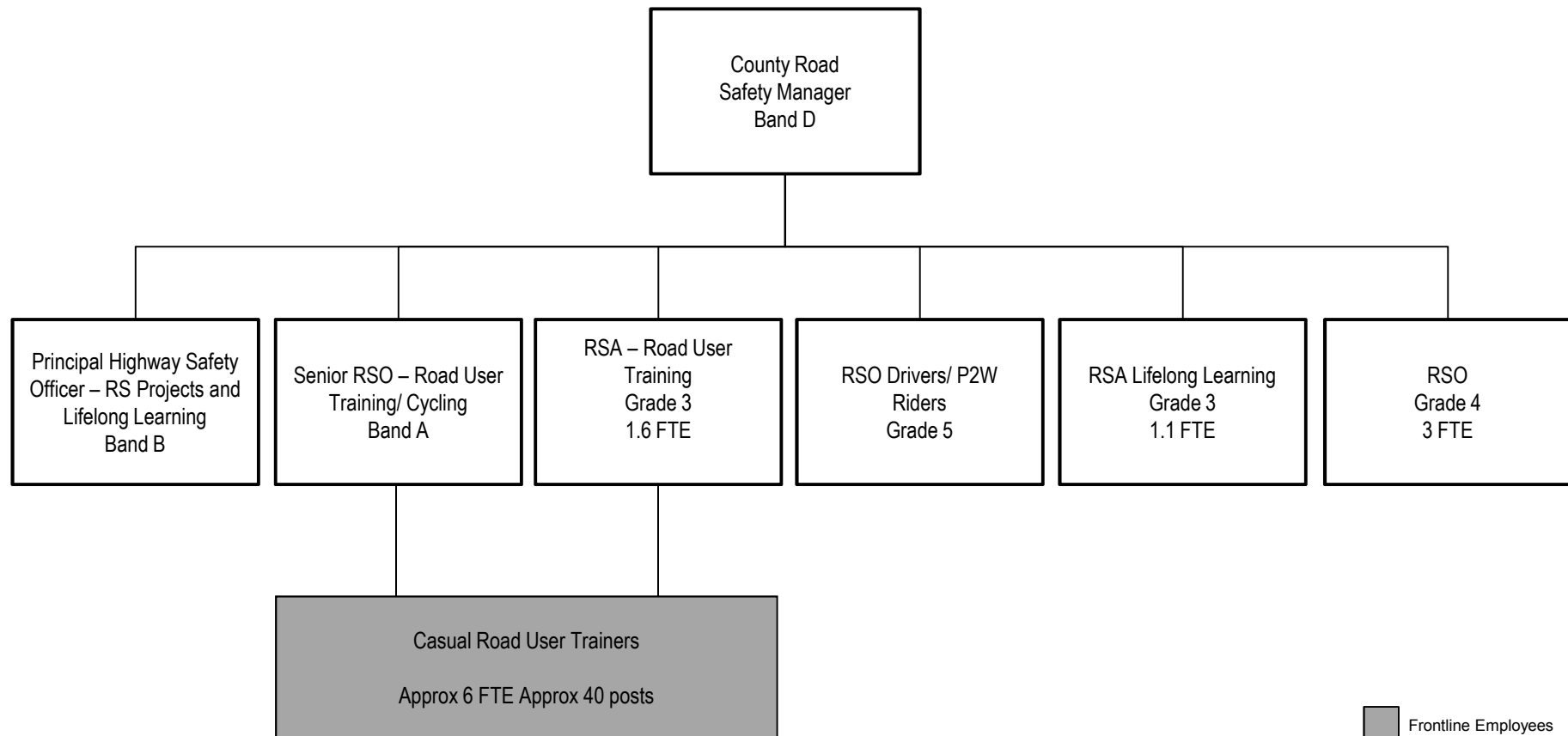
SIGNALS, LIGHTING & ITS

Post numbers shown are
full time equivalents



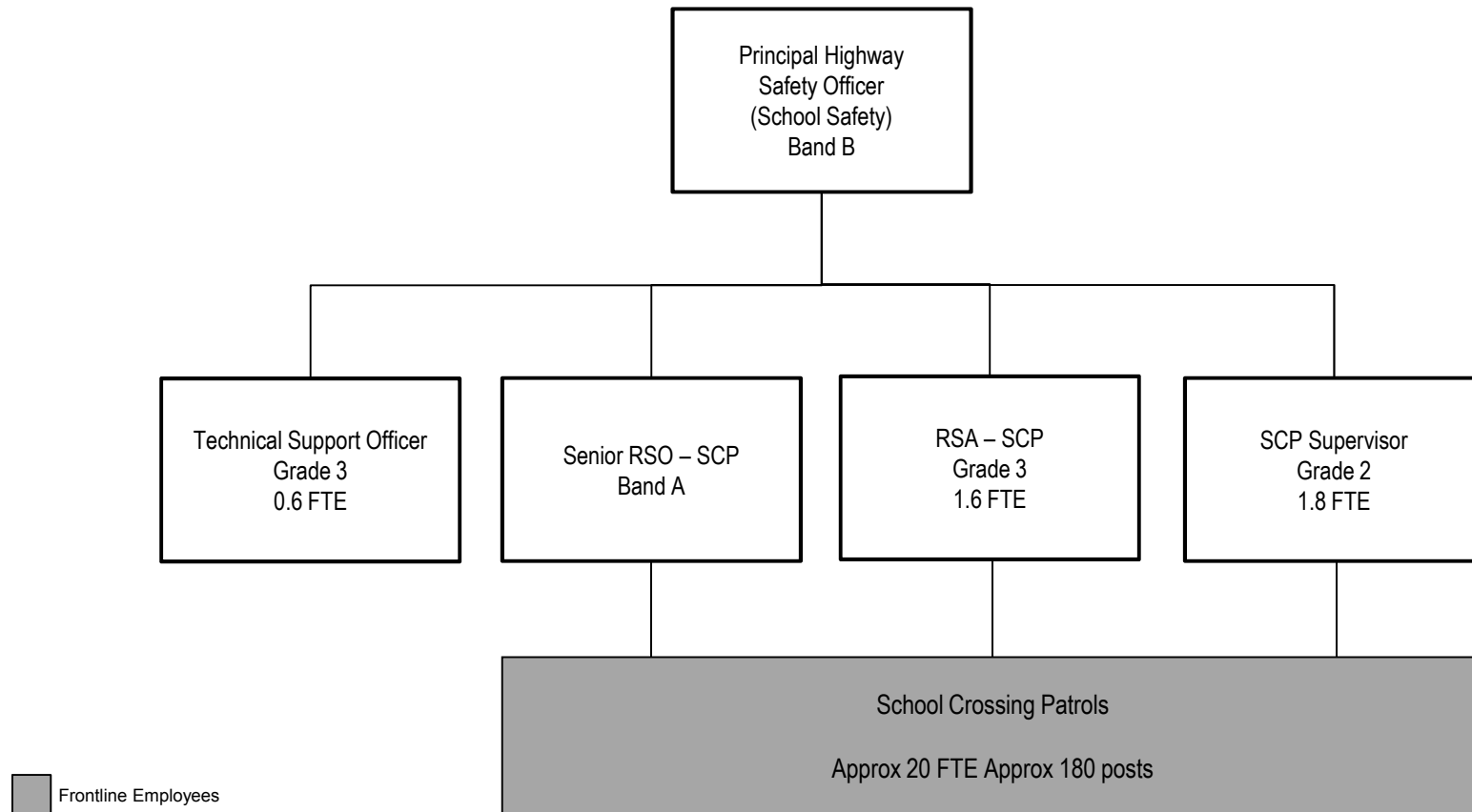
COUNTY ROAD SAFETY

Post numbers shown are
full time equivalents



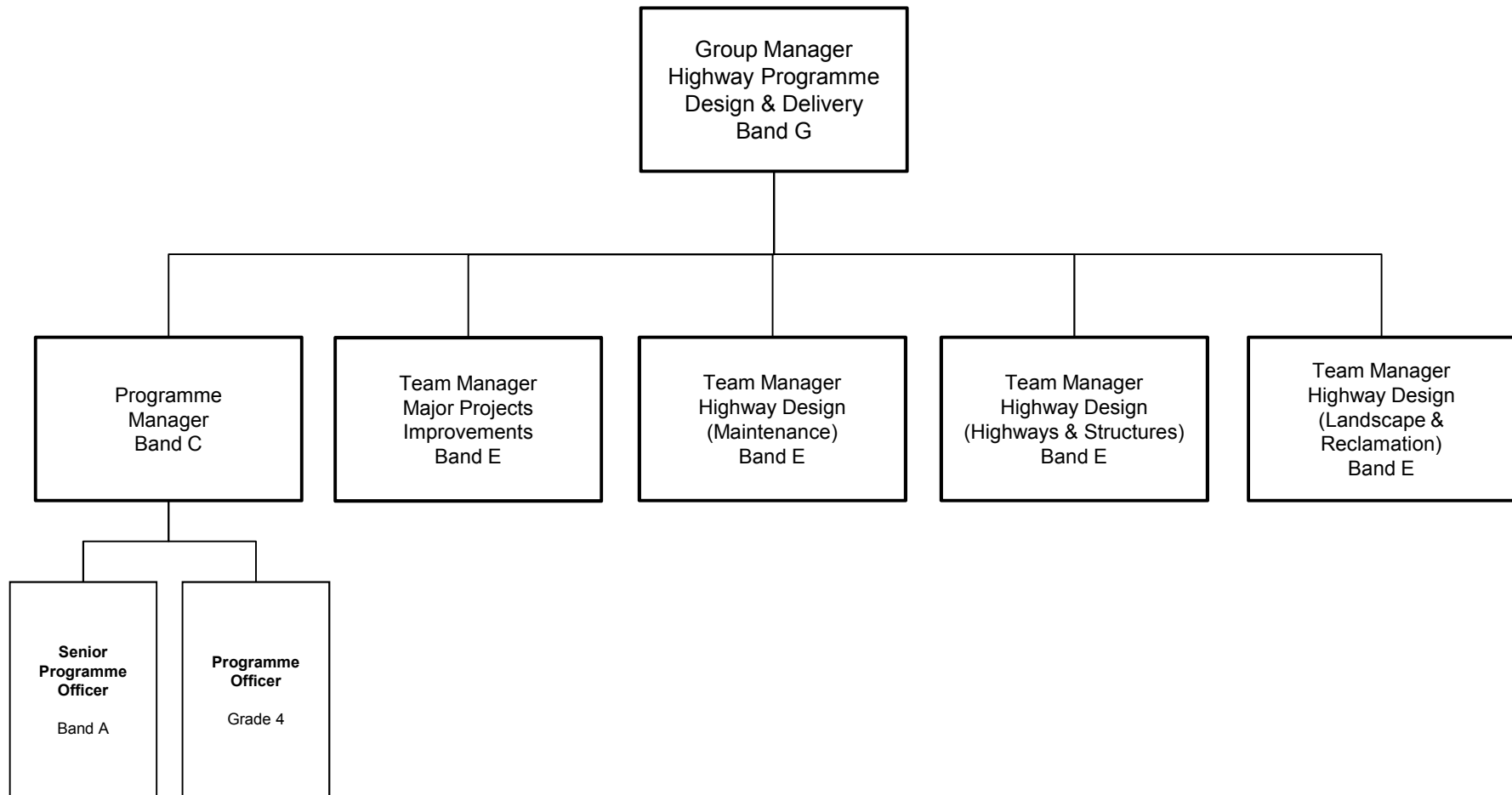
SCHOOL SAFETY

Post numbers shown are
full time equivalents



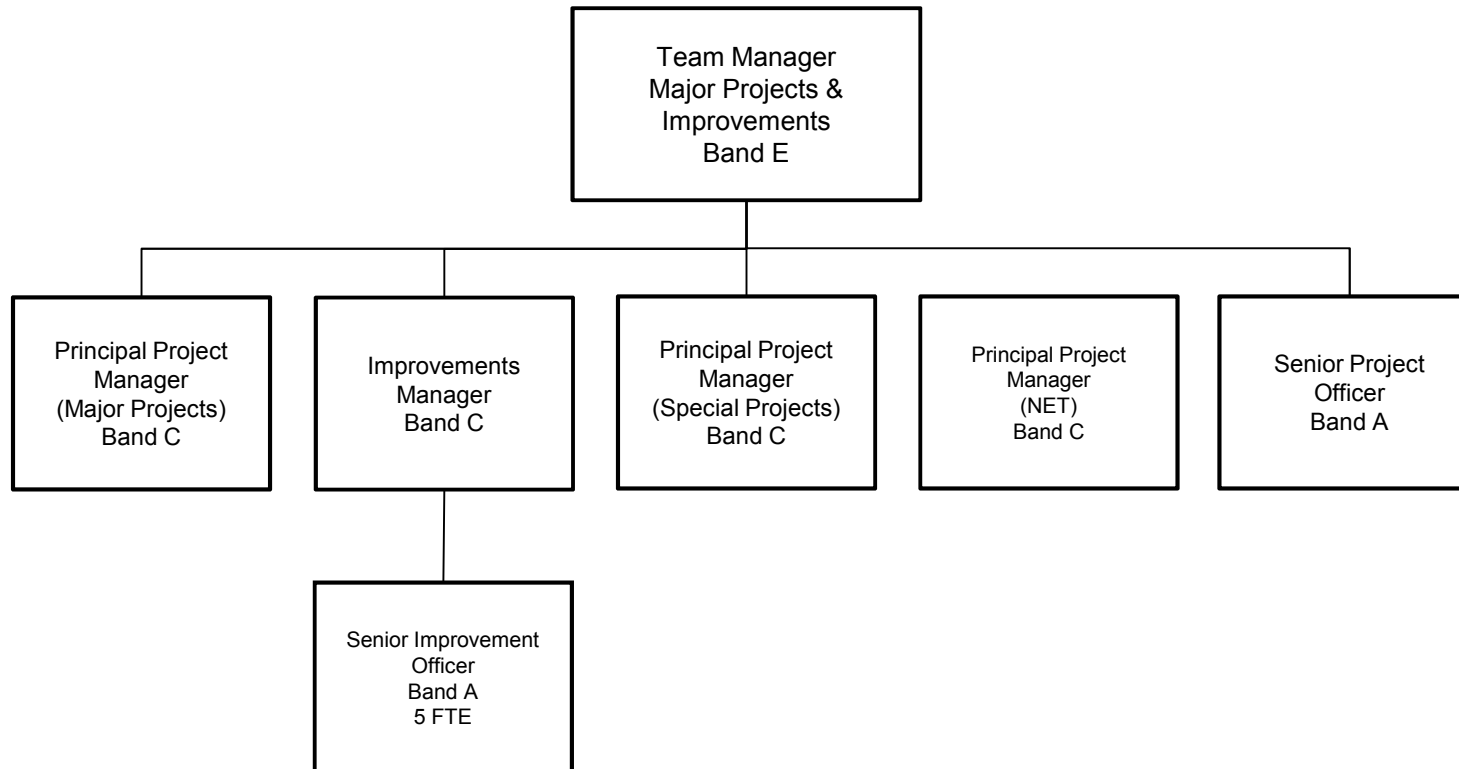
HIGHWAY PROGRAMME DESIGN & DELIVERY

Post numbers shown are
full time equivalents



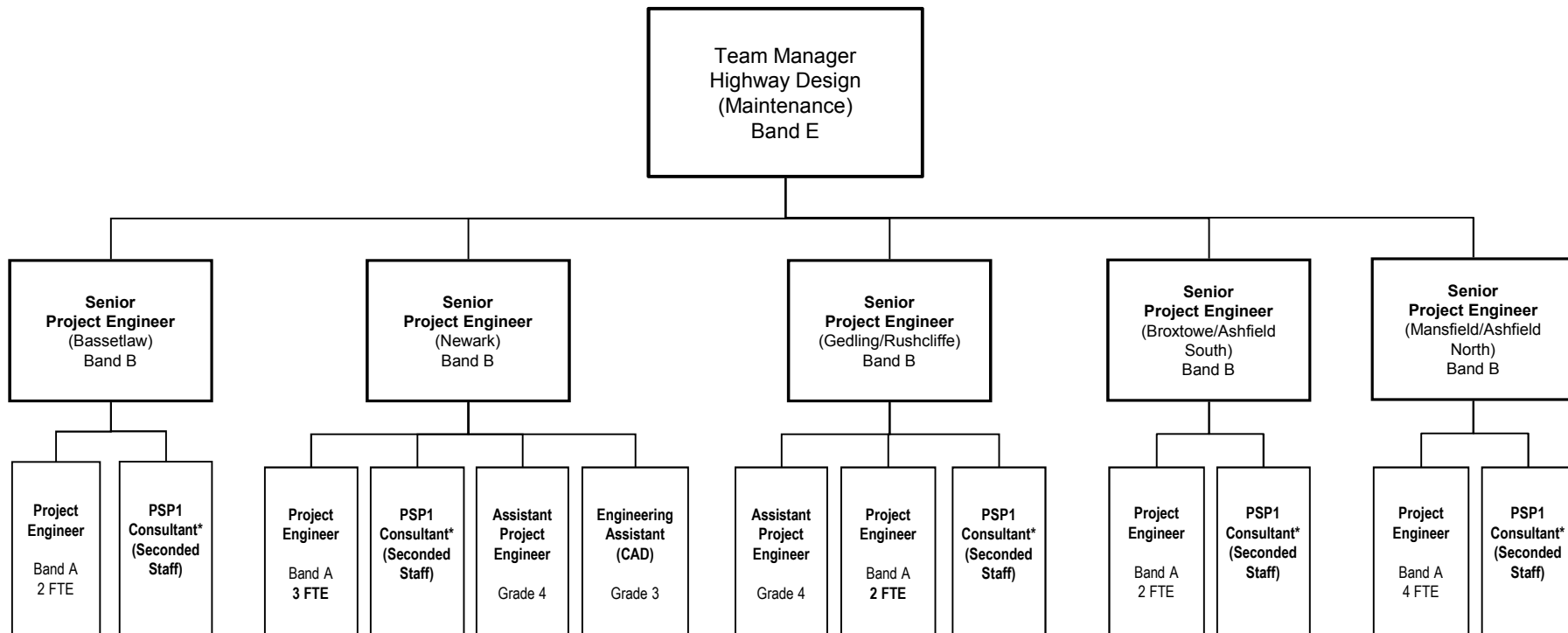
MAJOR PROJECTS & IMPROVEMENTS

Post numbers shown are
full time equivalents



HIGHWAY DESIGN (MAINTENANCE)

Post numbers shown are
full time equivalents



Notes:

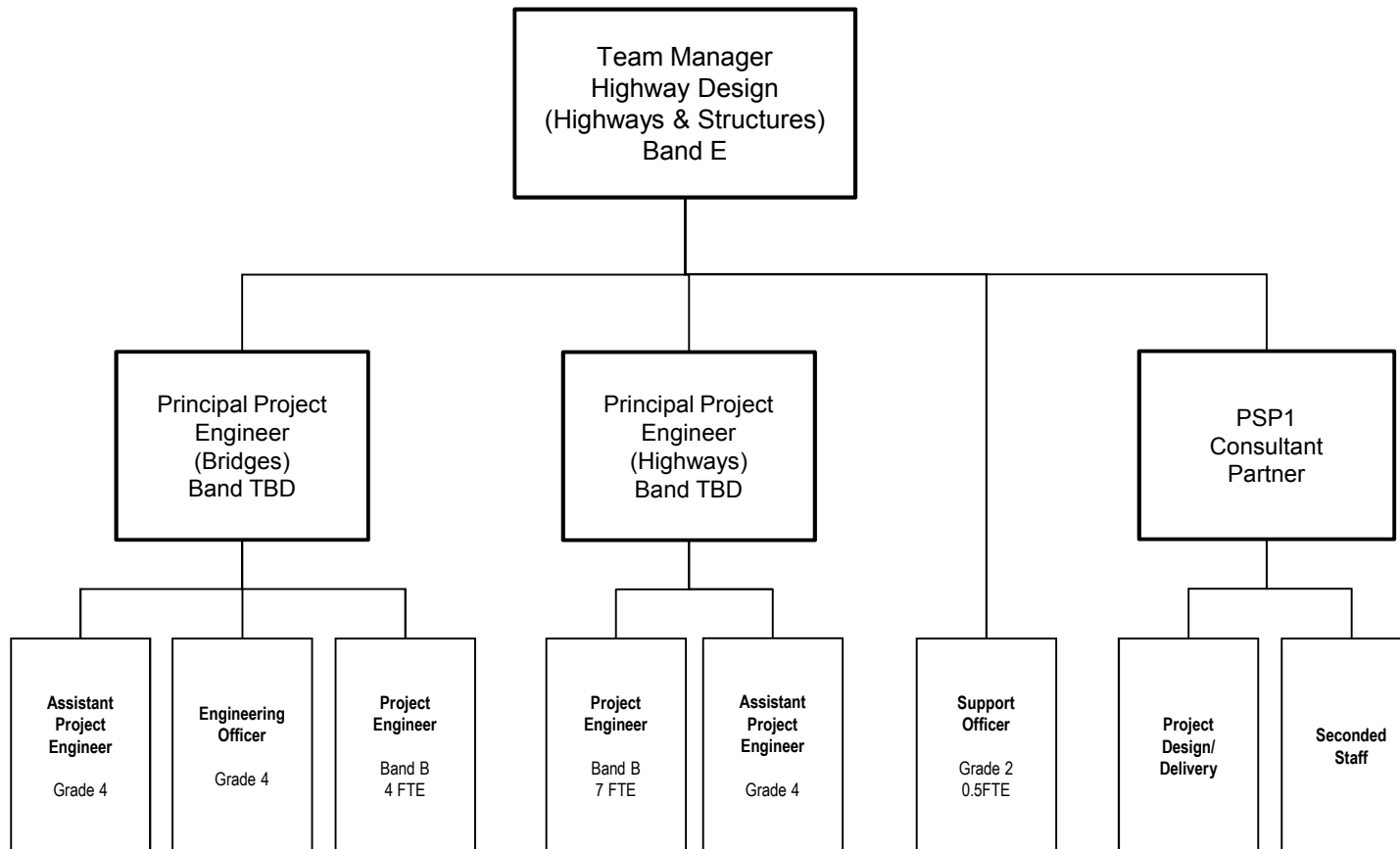
Although based on Districts, post will need to be flexible to cover all work across the County

Assistant Project Engineer posts will work across all Teams / Areas and between Groups to maximise training opportunities and experience.

*Seconded Professional Services Partnership Contract (PSP1) consultant staff to be determined based on project workload

HIGHWAY DESIGN (HIGHWAY & STRUCTURES)

Post numbers shown are
full time equivalents



HIGHWAY DESIGN (LANDSCAPE & RECLAMATION)

Post numbers shown are
full time equivalents

