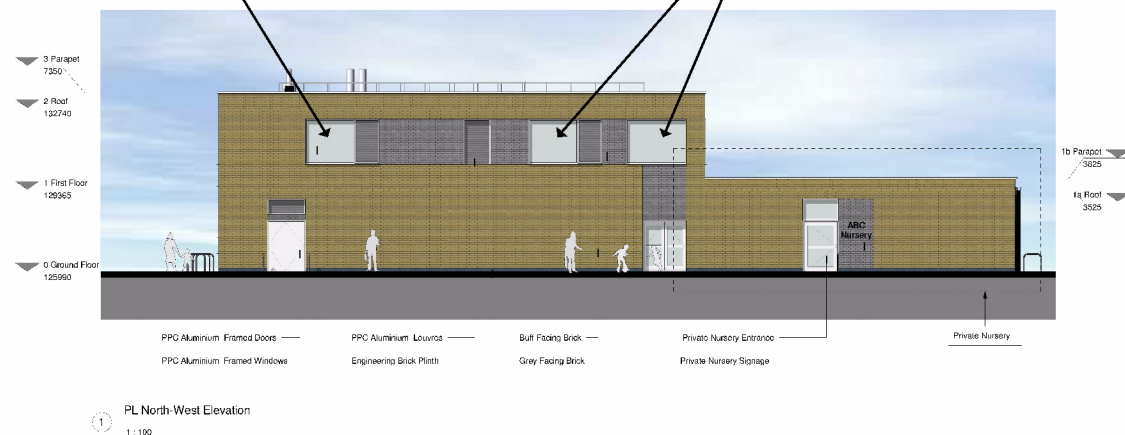


STAFF ROOM WINDOW

WINDOWS PROVIDING  
LIGHT TO VOID OVER HALL



**Nottinghamshire  
County Council**

Erection of a two storey replacement 420 place primary and 26 place nursery school, with additional single storey 13 place private nursery, additional car parking, lighting and CCTV, and landscaping. Alteration to pedestrian and vehicular access including widening of junction with Stuart Avenue and school gates. New and re-use of 2.4m high weldmesh fencing. Sprinkler tank, pump house and bin store with 3.5m and 2.5m high timber enclosure. Demolition of concrete shelter, removal of former school building foundations, replaced by new building, hardstanding play areas and landscaping.

Former Sherwood Hall School site, Stuart Avenue, Forest Town, Mansfield.  
Planning Application No. 2/2015/0031/NT

This map is reproduced from Ordnance Survey material with the permission of Ordnance Survey on behalf of the  
Controller of Her Majesty's Stationery Office © Crown copyright.  
Unauthorised reproduction infringes Crown copyright and may lead to prosecution or civil proceedings. (1000019713) (2015)



Not to Scale  
Produced by: JW  
Date: MARCH 2015

**PLAN 6**