



## **Domestic Violence Performance Dashboard Quarter 2 (July-September) 2011/12**

**Compiled for Safer Nottinghamshire Board  
By Gary Hutson (SNB SAU)  
16 January 2012.**

## Table of contents

<b>1. Summary of this report .....</b>	<b>2</b>
<b>2. Performance Dashboard Notes and Methodology .....</b>	<b>3</b>
<b>3. Domestic Violence Performance Dashboard – Quarter 2 2011/12.....</b>	<b>4</b>
<b>4. Domestic Violence – Partnership Plus Areas – Q2 2011/12 .....</b>	<b>5</b>
<b>5. Performance Overview.....</b>	<b>6</b>
5.1 Domestic Violence recorded crime offences.....	6
5.2 DV –Domestic Violence crime map – 2011/12 .....	7
5.3 DV – Domestic violence within the Partnership plus areas .....	8
5.4 DV – Domestic Violence Incident Calls .....	9

### 1. Summary of this report

This report contains the summary and target performance sections for quarter 2 of this financial year and utilises data published in October 2011. The data on the dashboard is cumulative data up to the relevant quarter; comparisons will also be based on cumulative data.

A Performance Dashboard has been developed and has been commissioned by the Domestic Violence lead officers.

The performance dashboard shows the current performance for the relevant quarter, and highlighted is the Domestic Violence levels within each Partnership Plus geographical area.

This report is intended to inform the SNB on progress against levels from the previous financial year (by relevant quarter) and to highlight areas of positive, negative performance, and to highlight risks at a strategic level.

## **2. Performance Dashboard Notes and Methodology**

The following table shows data sources and notes for the performance information.

<b>Measure</b>	<b>Data source</b>	<b>Notes</b>
<b>DV – Repeat incidents of DV within 12 months through MARAC</b>	DV lead officers – MARAC data.	Obtained from the DV lead officers. Baseline 27% 2010/11.
<b>DV Incidents</b>	Notts Police – Crime Recording Management System (CRMS).	DV incidents extracted using the qualifier ‘Domestic Incident’. Cumulative data used. Performance compared to the same quarter of the previous year.
<b>DV Incidents – Proxy 1 – Proportion of incidents which are honour based.</b>	Notts Police – POETS.	Honour based incidents extracted using the qualifier ‘Honour Based’. Cumulative data used. Performance compared to the same quarter of the previous year.
<b>DV offences</b>	Notts Police Management Information	Cumulative data used. Performance compared to the same quarter of the previous year.
<b>Proxy measure 1 – DV offences where violence was against a person(s)</b>	Notts Police Management Information	Crimes recorded with violence against a person element. Cumulative data used and compared against the quarter of the previous year for performance monitoring.
<b>Proxy measure 2 – Rate of DV offences which have a sexual element.</b>	Notts Police Management Information	Rate of Domestic Violence offences which have a sexual tag attribute.
<b>Proxy Measure 3 – Percentage of DV offences which have resulted in sanction detections<sup>1</sup>.</b>	Notts Police – Crime Recording Management System (CRMS)	Percentage of Domestic Violence offences which have the Crime State Description field within CRMS equal to sanction detection result.
<b>Proxy Measure 4 – Repeat DV offences within 12 months at the same address</b>	Notts Police Management Information	Calculated using geographical repeat locations within 12 months at the same address.

Rates are calculated using ONS 2010 mid-year estimates.

<sup>1</sup> Sanction detections are charges/summonses, cautions, offences taken into consideration, penalty notices for disorder and formal warning (such as for cannabis possession, etc.). Therefore, any offence showing ‘undetected’ does not have sanction detection as a result.

### 3. Domestic Violence Performance Dashboard – Quarter 2 2011/12

INDICATOR	2010/11	2011/12	CSP Level				Comments
			Ashfield	Mansfield	BNS	South Notts	
1. <b>DV</b> – Repeat incidents of DV within 12 months through MARAC	27% Baseline from 2010/11.	24.89%	22.07% Mansfield & Ashfield CSP repeat figure.		31.29%	22.2%	Baseline 27% for 2010/11. Moving to 2 MARACs on 01/10/2011.
2. <b>DV</b> - No. of DV incidents	3992 – Q2 2010/11	4657	819 (730)	943 (730)	1437 (1211)	1458 (1321)	Figures in brackets display volume levels from the previous financial year cumulative up to Q2.
3. <b>DV</b> - Proxy Measure 1 Proportion of DV incidents which are honour based (HBV).	0%.	0%	0%	0%	0%	0%	Cumulative data used. Honour based incidents display higher rates within Nottingham City (this may be a recording issue).
4. <b>DV</b> – DV offences	1790 – Q2 2010/11	2105	437 (388)	413 (409)	590 (411)	665 (582)	Figures in brackets display volume levels from the previous financial year cumulative up to Q2.
5. <b>DV</b> – Proxy measure 1 – DV offences where violence was against a person(s)	1391 – Q2 2010/11	1626	332 (303)	324 (344)	465 (316)	505 (428)	Figures in brackets display volume levels from the previous financial year cumulative up to Q2.
6. <b>DV</b> – Proxy measure 2 – Rate of DV offences which have a sexual element.	No data available	0.9%	0.9%	0.5%	1%	0.9%	Data processed through the SAU data hub.
7. <b>DV</b> - Proxy measure 3 - Percentage of DV offences which have resulted in Sanction Detections.	No data available	57%	59%	62%	59%	52%	Taken from the Crime State Description in CRMS.
8. <b>DV</b> - Proxy measure 4- Repeat DV offences within 12 months at the same address	No data available	19.4%	21.8%	23.4%	15.9%	18.1%	

Table 1

#### KEY:

Traffic Light Performance Monitoring
Red = >10% under achieving
Amber = 5-10% under achieving
Yellow = <5% under achieving
Light Green = <10% over achieving
Dark Green = >10% over achieving

#### **4. Domestic Violence – Partnership Plus Areas – Q2 2011/12**

Area	CSP	DV offences	(% of total DV crime in Partnership Plus areas)	Rank
Sutton East	APAC	107	10.5%	1
Sutton Central	APAC	87	8.5%	2
Portland	MPAC	80	7.8%	3
Worksop South East	BNS	79	7.8%	4
Kirkby East	APAC	76	7.5%	5
Sutton North	APAC	75	7.4%	6
Ravensdale	MPAC	74	7.3%	7
Netherfield & Colwick	South Notts	70	6.9%	8
Castle	BNS	66	6.5%	9
Eastwood South	South Notts	66	6.5%	10
Sherwood	MPAC	61	6%	11
Harworth	BNS	61	6%	12
Worksop North West	BNS	48	4.7%	13
Carlton	South Notts	44	4.3%	14
Trent Bridge	South Notts	24	2.4%	15*

**Table 1**

The partnership plus areas have been chosen because of the high overall all crime levels. Trent Bridge ward is ranked 70<sup>th</sup> in terms of domestic violence volume overall, these rankings are purely based on the order of volume crime within each area.

## **5. Performance Overview**

This report has been commissioned by the SNB Domestic Violence lead officers. It is intended as an analytical product for the SNB, and will provide a brief overview of performance and exception reporting.

### **5.1 Domestic Violence recorded crime offences**

Performance monitored against the previous quarter of the previous financial year. The following positives, areas for concern and barriers to success have been identified.

#### **Exception reporting**

The main issues for concern are highlighted below along with areas that have seen an improvement in performance during the quarter:

##### **POSITIVE EXCEPTIONS**

- i) Mansfield has the highest rate of sanction detections at 62% of all domestic violence crimes. An additional measure would be to introduce the offences brought to justice data to look at post arrest figures.
- ii) Mansfield is the only district not to have an emergent trend in relation to domestic violence in the comparison period (01/04/2010-30/09/2011).
- iii) When comparing Q2 of 2010/11 to the current quarter - Rushcliffe is the only district to have achieved a reduction (-17.7%) in relation to Domestic Violence crimes overall.
- iv) Trend levels show that Domestic violence crimes within the County have shown a trough in September 2011 (with a decline from August 2011) at the lowest levels since February 2011, within 2011/12. This also happens in the previous financial year in September 2010.
- v) Further demographic breakdowns to be included in Quarter 3 – 2011/12.

##### **AREAS FOR CONCERN & BARRIERS TO SUCCESS**

- a) Bassetlaw, Newark and Sherwood have the greatest levels of sexual attributable domestic violence in Q2 (1% of all offences). This is a small proportion of all domestic violence but still remains problematic, also honour based violence at low levels.
- b) South Notts has the lowest proportion of sanction detections, when compared to all domestic violence crime.
- c) DV repeats by geographical location within 12 months (proxy measure 4) shows that Mansfield and Ashfield have the highest percentages of repeats.
- d) Demographic age banding show the most victimised age band for male and female gender types are between 18-25 years of age. The main suspect age band/gender is for males between 18-25 years of age.
- e) When looking at the proportion of violence against a person to total domestic violence - BNS and Mansfield have the highest proportions.
- f) Emerging trend patterns within DV crime when looking back (01/04/2010 – 30/09/2011), show that domestic violence related crime is on the increase in Ashfield, Bassetlaw, Broxtowe, Gedling, Newark and Sherwood and Rushcliffe. The County also shows an emergent pattern.
- g) Domestic violence homicide levels in 2011/12 show an area for concern, and focus should now be around how the partnership handles domestic abuse cases to avoid another Casey Brittle tragedy. This will be introduced in quarter 3 as an additional proxy measure.
- h) Actual Bodily Harm (ABH) is the main crime type in relation to domestic violence VAP crimes within Q2, accounting for 57.1% of all DV offences in this quarter. The greatest proportion of this indicator types happens in dwelling (78% of all offences) premise types.

## 5.2 DV –Domestic Violence crime map – 2011/12

The map below shows the levels of Domestic Violence crimes within the County, broken down to Lower Super Output (LSOA) geographical level for 2011/12.

### Domestic Abuse crimes - 2011/12 - Aggregated to LSOA

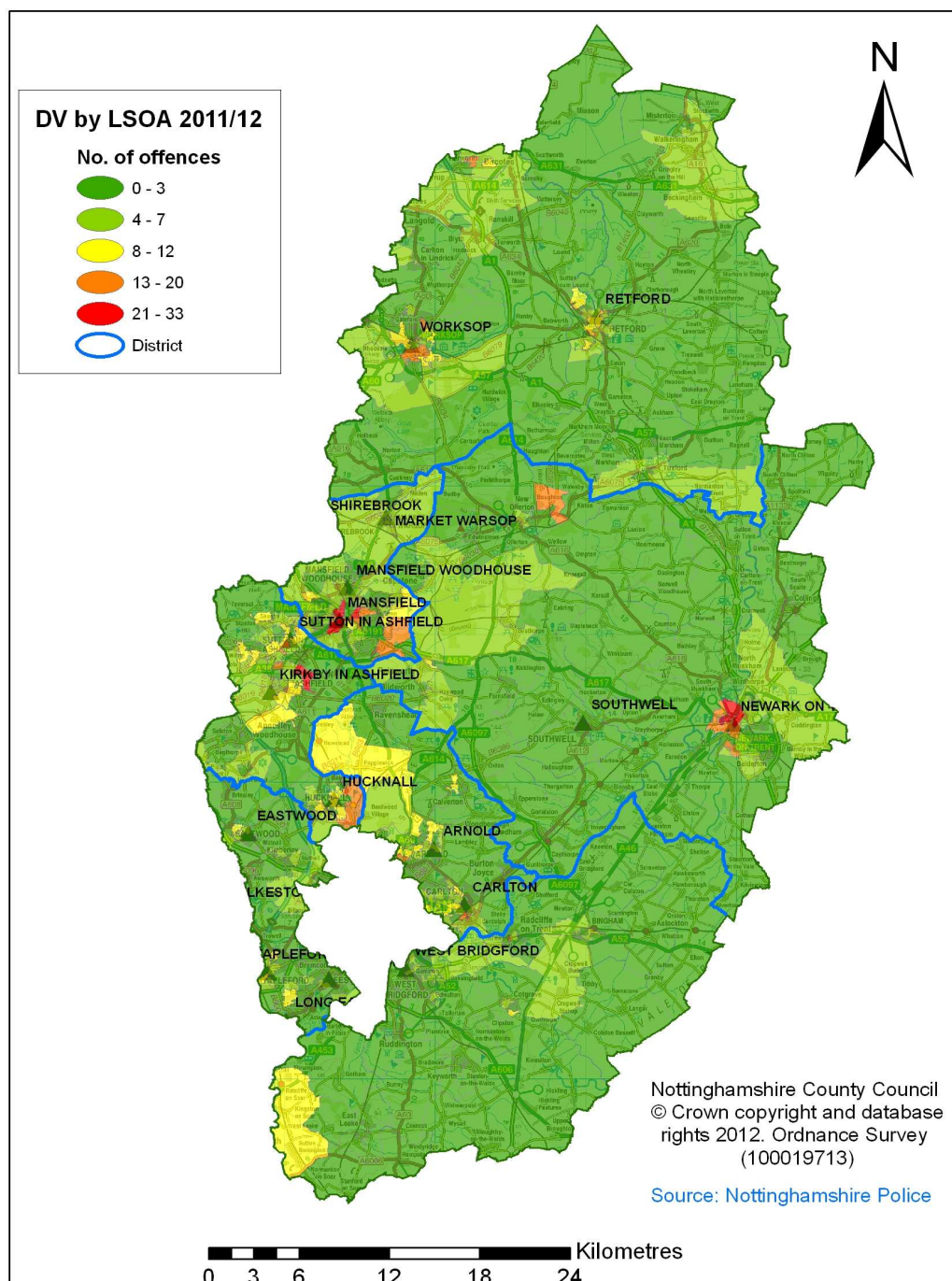


Figure 1

### 5.3 DV – Domestic violence within the Partnership plus areas

These geographical ward areas have been established via the SNB Strategic Assessment 2011/12, targets have been set against the reduction of all crime within these geographical areas to achieve an overall reduction in all crime across Nottinghamshire.

#### Exception reporting

The main issues for concern are highlighted below along with areas that have seen an improvement in performance during the quarter:

##### POSITIVE EXCEPTIONS

- Trent Bridge and Carlton have the lowest volumes of domestic violence crimes.

##### AREAS FOR CONCERN & BARRIERS TO SUCCESS

- Higher volume DV could occur outside of the partnership plus areas. In Q3 2011/12, an additional table will be included showing the highest wards where DV is most prevalent.
- Sutton East, Sutton Central and Portland are the areas for concern in this quarter.



## **5.4 DV – Domestic Violence Incident Calls**

The Domestic violence incident data has been taken from the Crime Recording Management System (CRMS) – Nottinghamshire Police. Honour based incidents (HBV) extracted from the POETS incident recording system using incident qualifier 'honour based'. The priority to increase domestic violence reporting needs to be managed effectively. However, this is problematic and targets haven't been set for the following reasons:

1. Increased reporting can be viewed as positive, or not.
2. Increased repeat reporting could show confidence in reporting Domestic Violence to the relevant agencies.
3. Data changes can reflect changes in agency behaviour, as much as changes in criminal behaviour.

From a meeting with the domestic violence leads the points above were proposed as the reasons for not establishing targets at this stage. The domestic violence strategy group would be an ideal time to discuss such viewpoints, as this report is the first produced by the SNB and shall remain an evolving report.