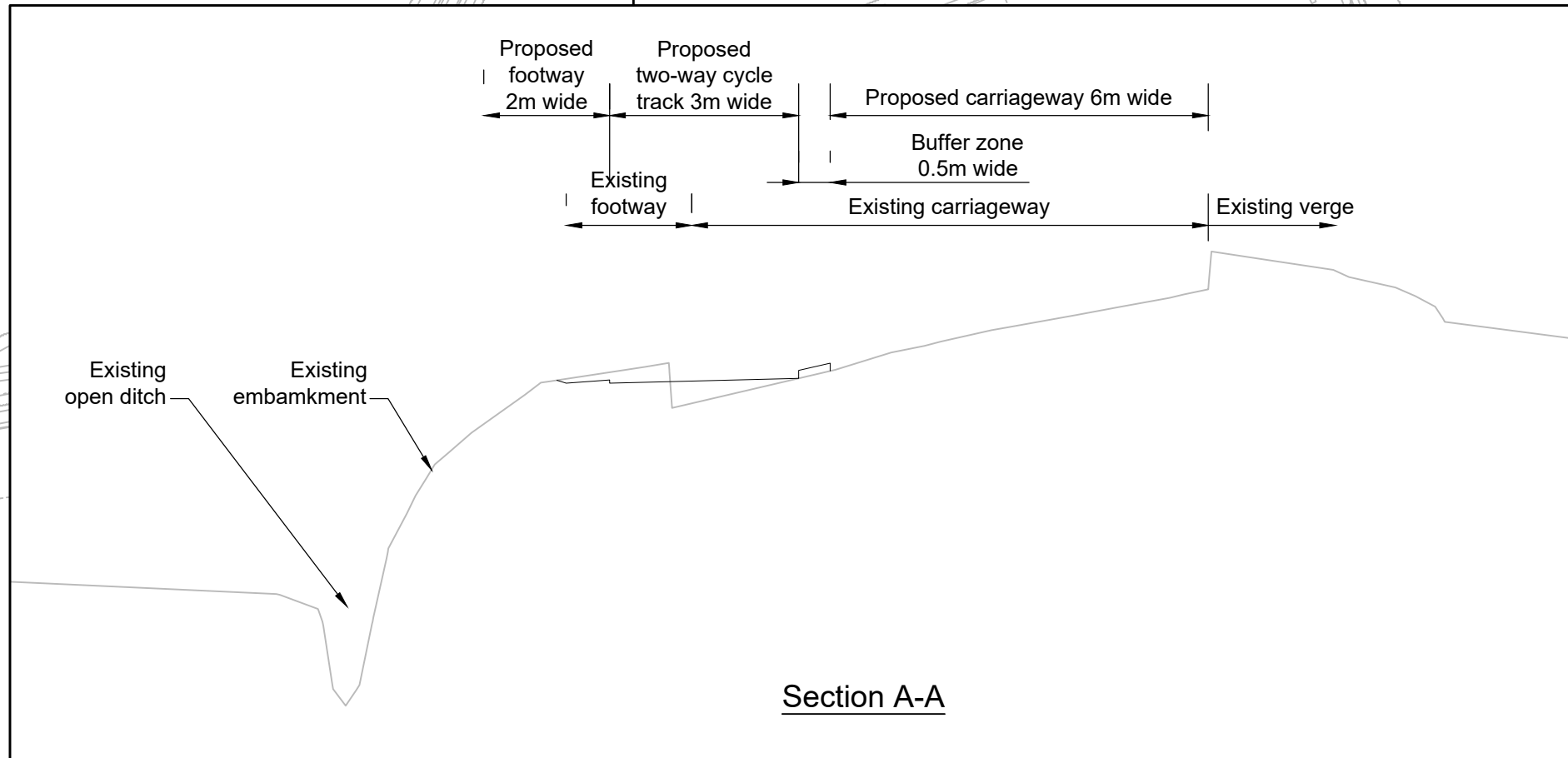
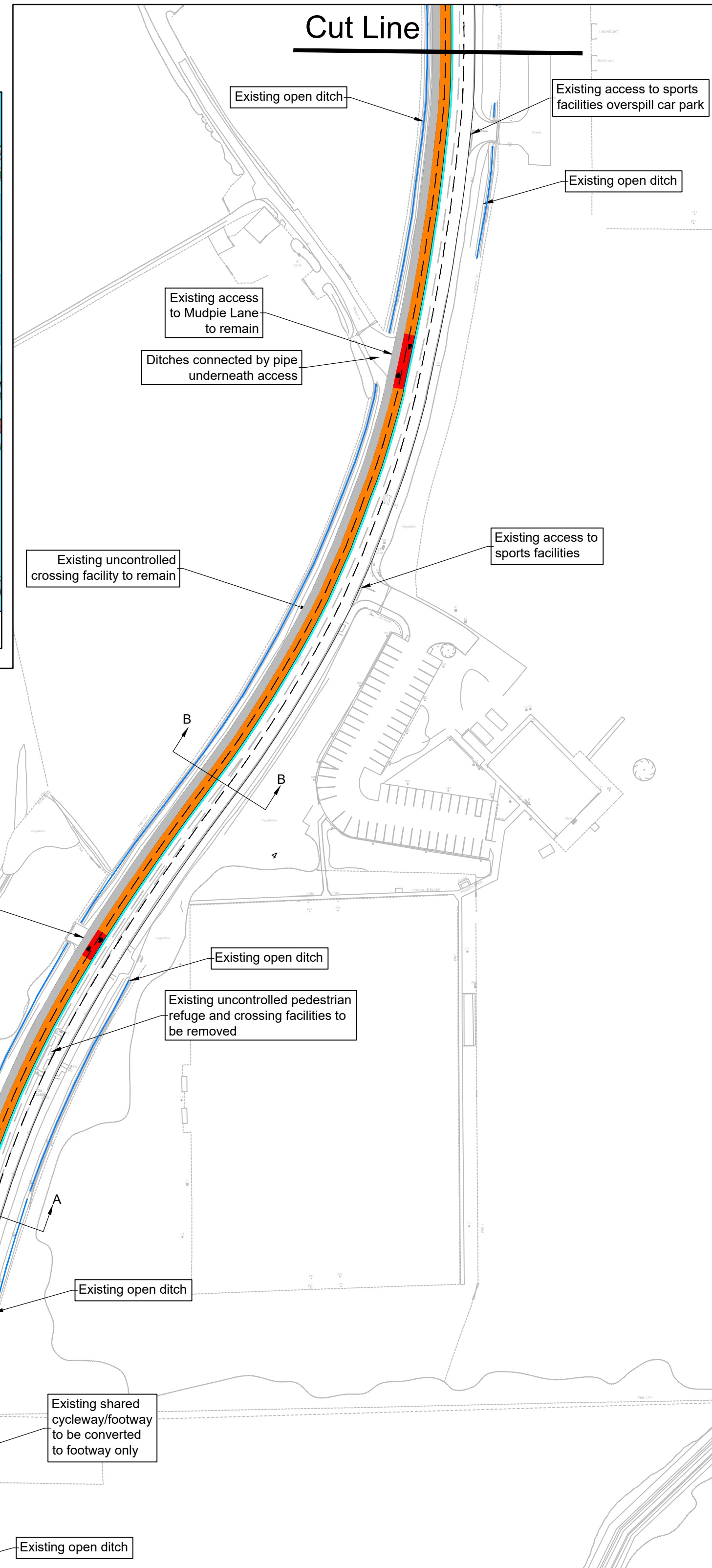
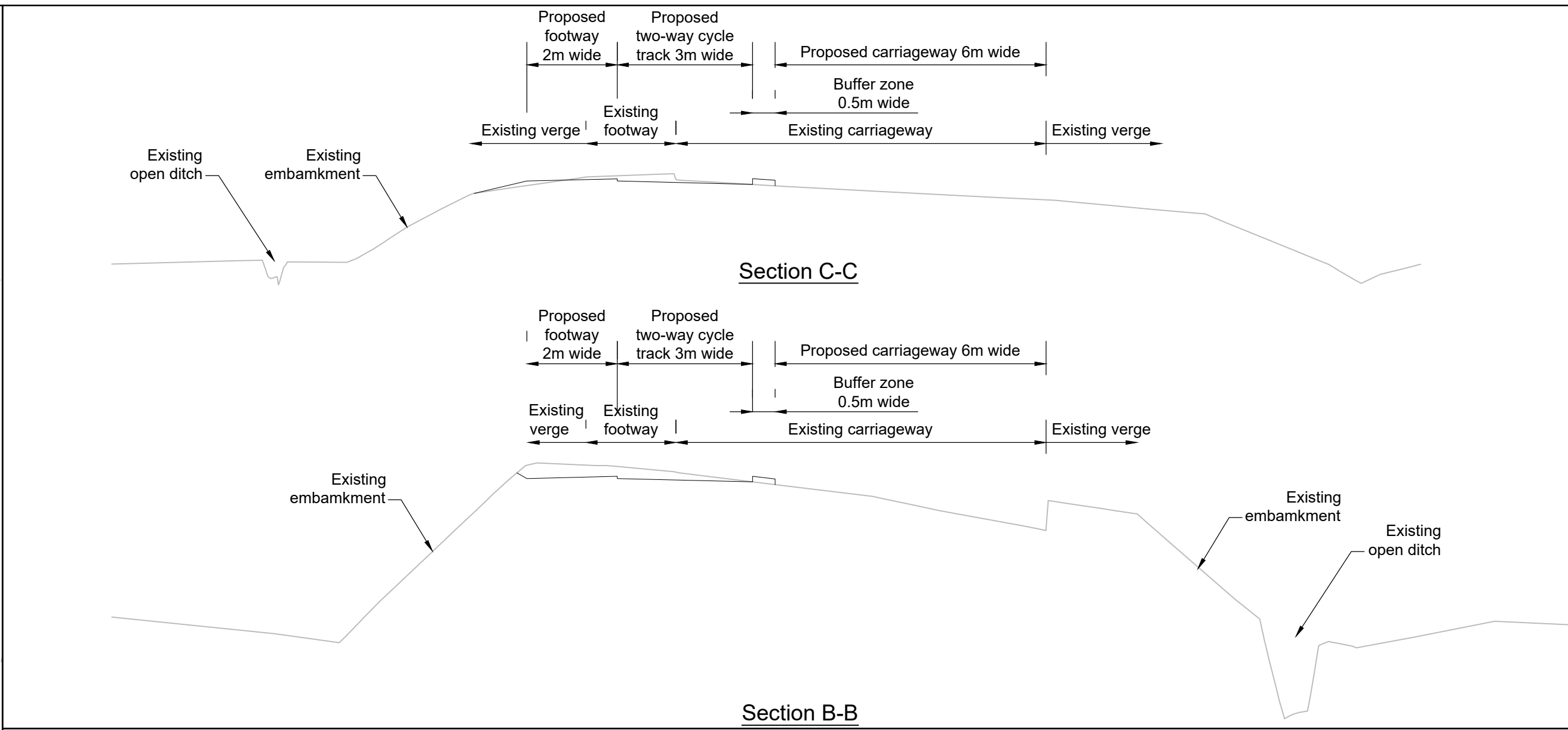


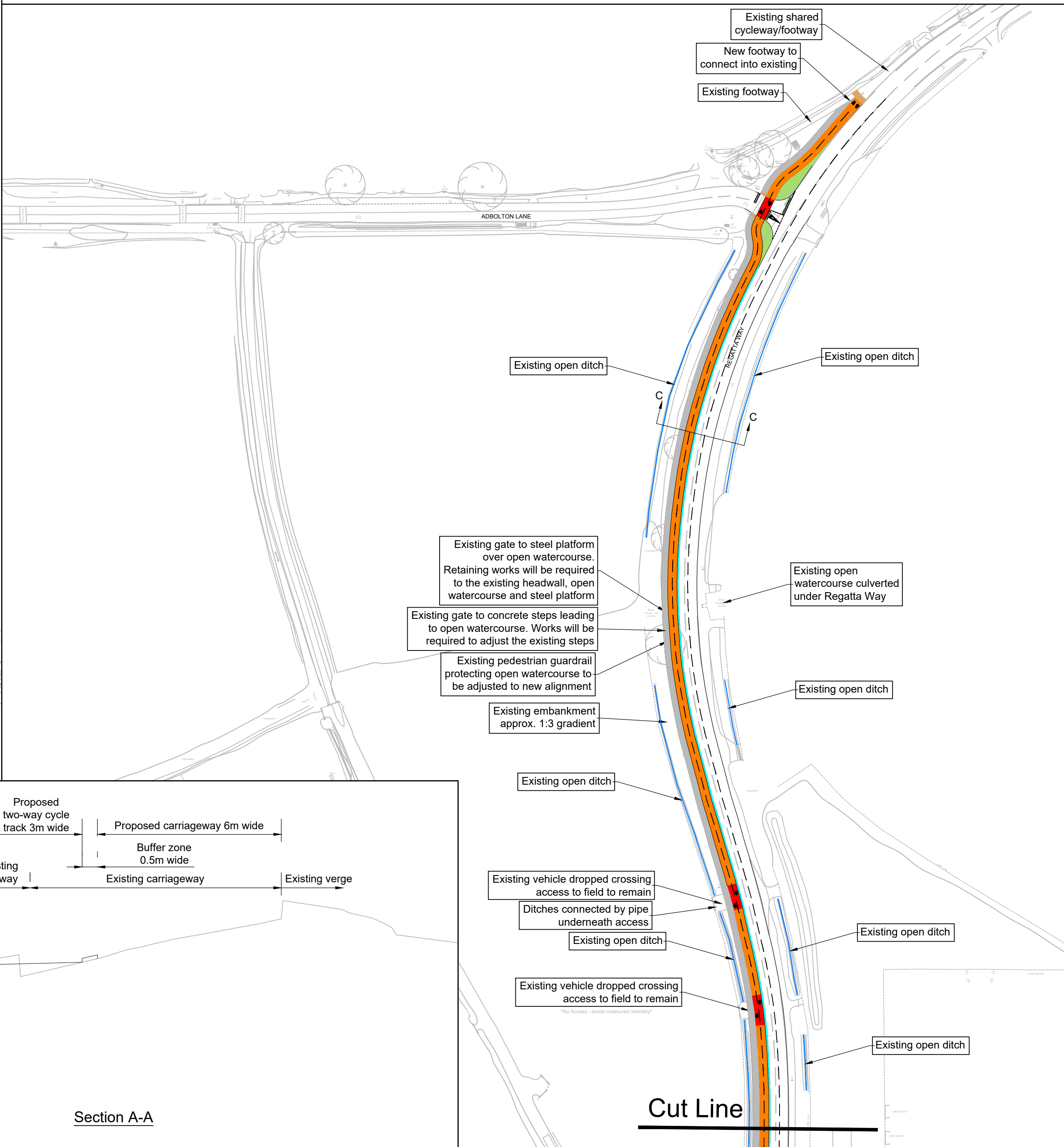
General Arrangement (1:1000)



Cross Section (1:1000H, 1:500V)



Cross Section (1:1000H, 1:500V)



General Arrangement (1:1000)

KEY	
	Existing Layout
	Buffer Zone (0.5m width)
	3m wide two-way cycle track, 0.5m kerbed buffer zone between cycle track and carriageway. Cycle track to be 50mm below existing footway. Footway and cycle track segregated by kerbing
	2m wide footway adjacent to carriageway or cycle track
	Carriageway extents
	Shared use footway (Min 3m wide)
	Coloured bituminous surfacing across junctions and accesses on Segregated Cycle Track
	Proposed Highway Layout
	Existing Grassed Verge
	Tactile Paving / Corduroy Paving
	Existing open ditch

- NOTES**
1. This drawing is to be read in conjunction with all other relevant drawings, details and specifications.
  2. Do not scale from this drawing.
  3. All measurements are given in metres unless otherwise stated.

Rev.	Description	Drawn	Ch'kd	Auth	Date
Project					
Active Travel Fund Regatta Way, West Bridgford					
Status					
Project No. TP2150478					
Information					
Drawing Title					
Proposed Segregated Cycle Track With Annotation					
Scale					
1:1000 @A1					
Drawing No.					
ATF-HSP-HGN-RW-DR-CH-001					
Rev.					
0					



www.viaem.co.uk Tel 0115 804 2100  
Bilthorpe Depot, Bilthorpe Business Park,  
Bilthorpe, Nottinghamshire, NG22 8ST