

Preventing Deaths from Liver Disease?

Dr Martin James

Dr Robert Scott

Consultant Hepatologist NUH

NIHR Academic Clinical Fellow

Dr Rebecca Harris

NIHR Academic Clinical Fellow

Nottinghamshire Health & Wellbeing Board

October 4th 2017

Overview

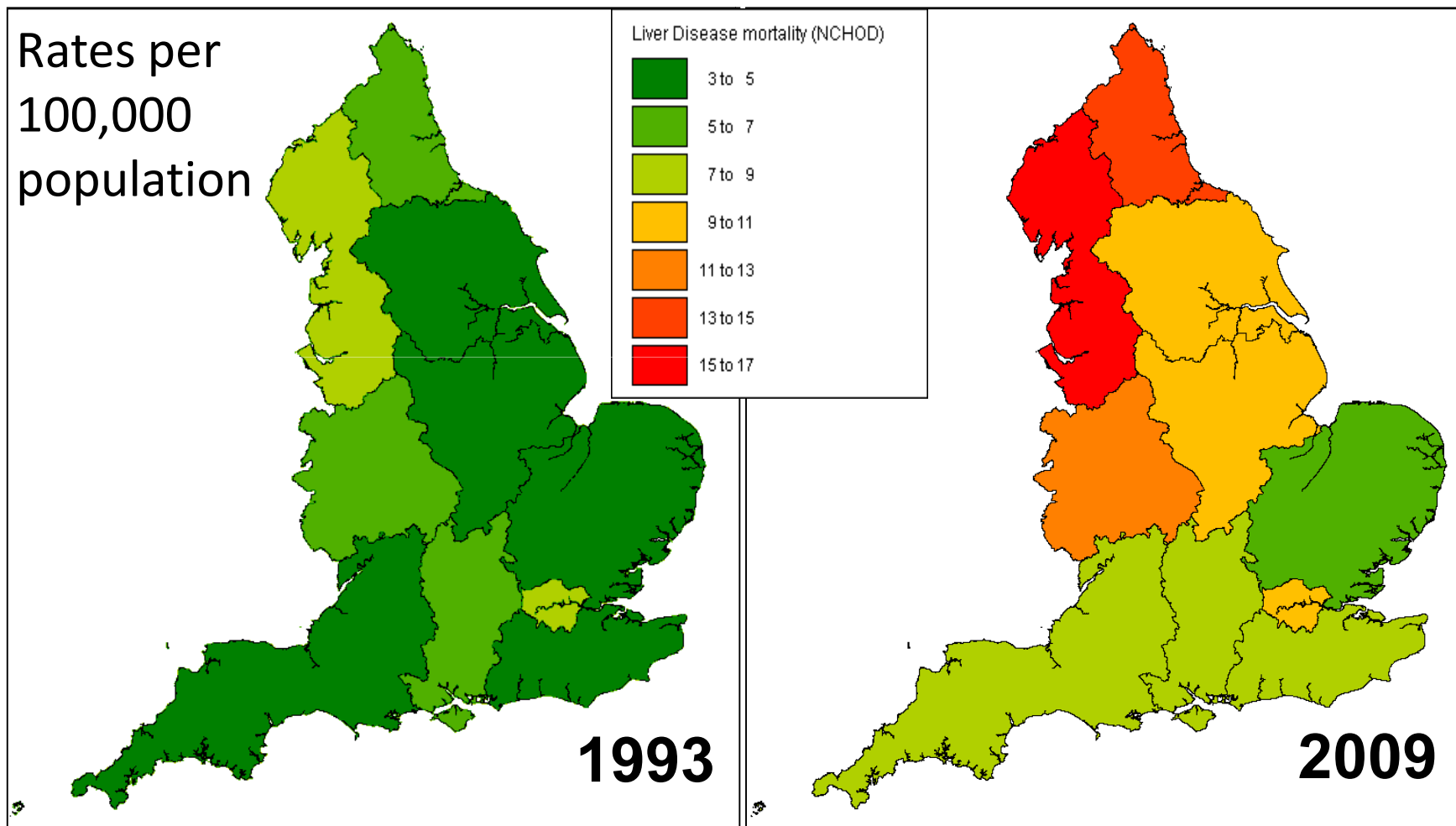


- The burden of liver disease in the UK & Nottinghamshire
- Prevention
- Case finding
- The way forward together

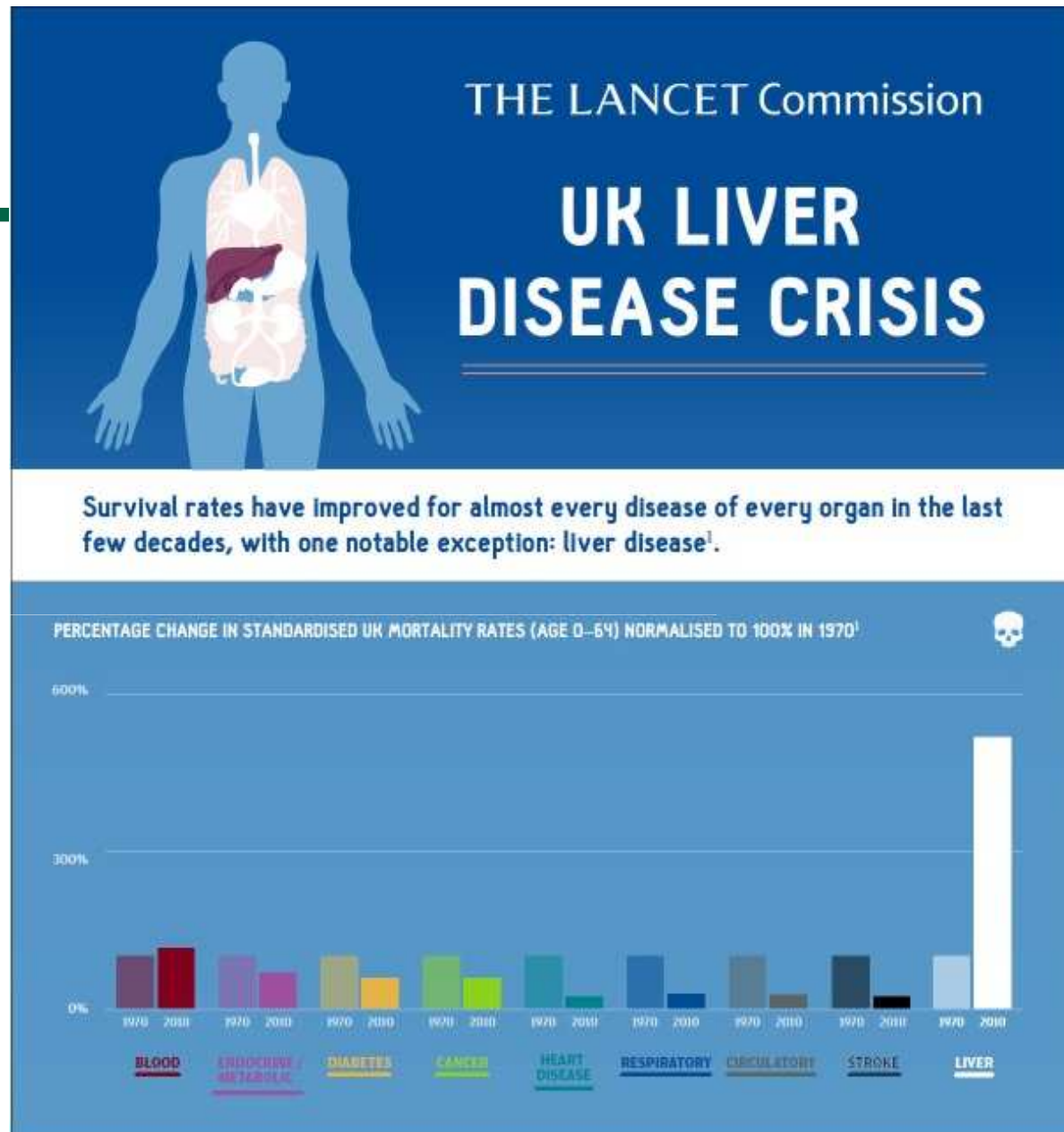


DISEASE BURDEN

Deaths from Chronic Liver Disease

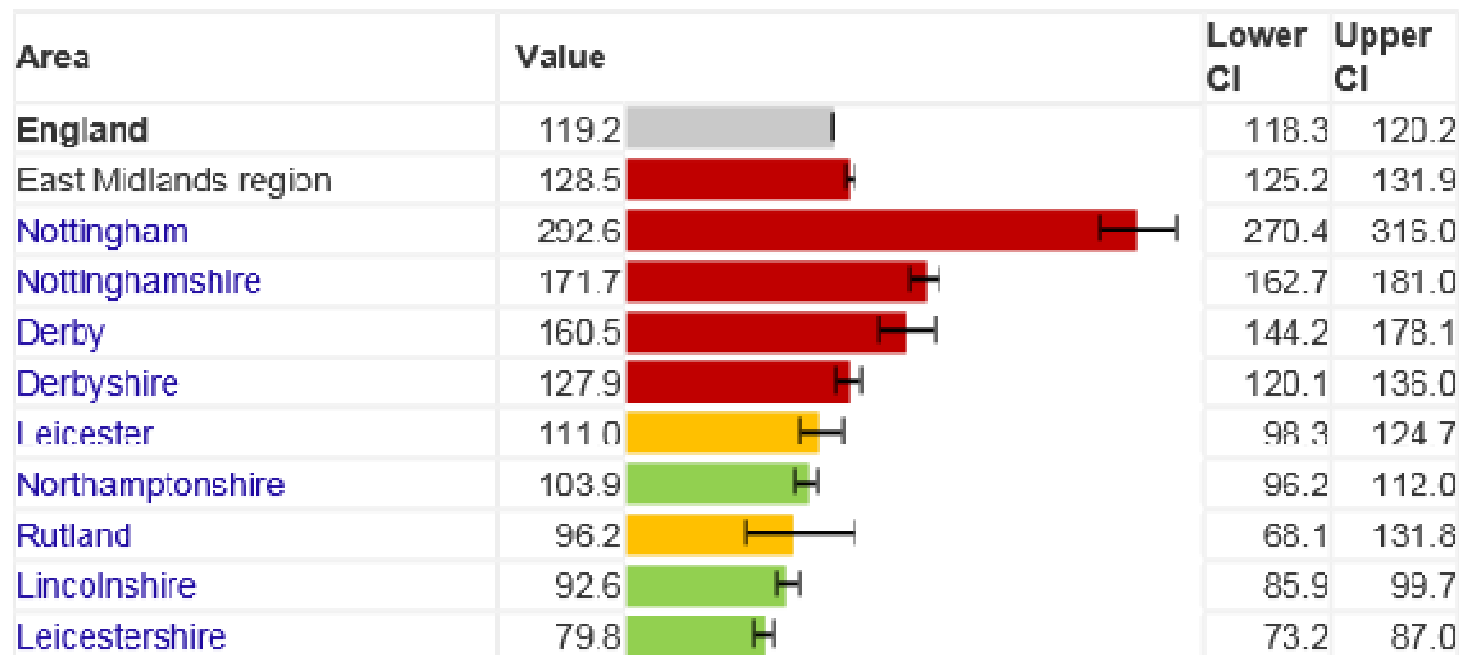


Bhala, Aithal & Ferguson, *BMJ*, 2013



Hospital admissions

- Nottingham highest rates in the UK

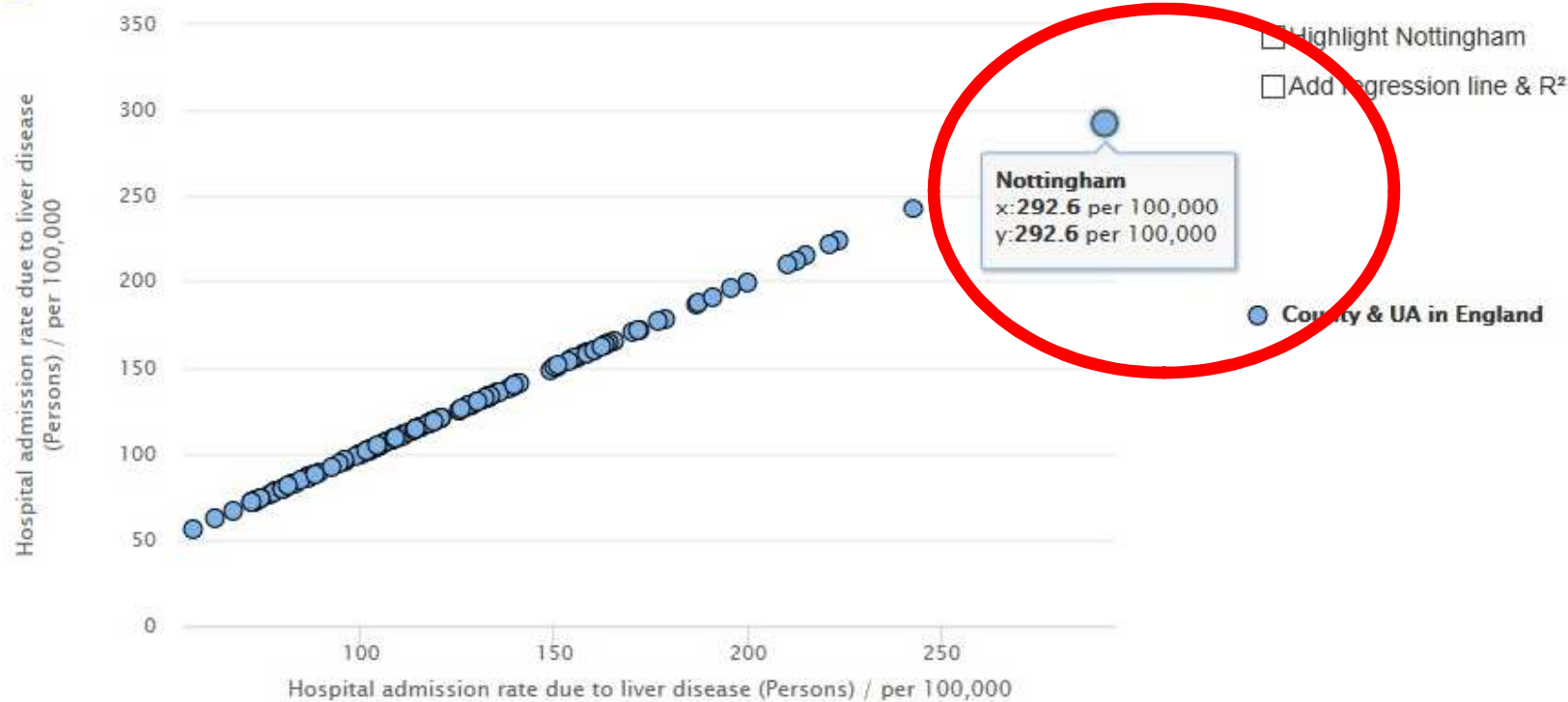


Area	Value	Lower CI	Upper CI
England	119.2	118.3	120.2
East Midlands region	128.5	125.2	131.9
Nottingham	292.6	270.4	315.0
Nottinghamshire	171.7	162.7	181.0
Derby	160.5	144.2	178.1
Derbyshire	127.9	120.1	135.0
Leicester	111.0	98.3	124.7
Northamptonshire	103.9	96.2	112.0
Rutland	96.2	68.1	131.8
Lincolnshire	92.6	85.9	99.7
Leicestershire	79.8	73.2	87.0

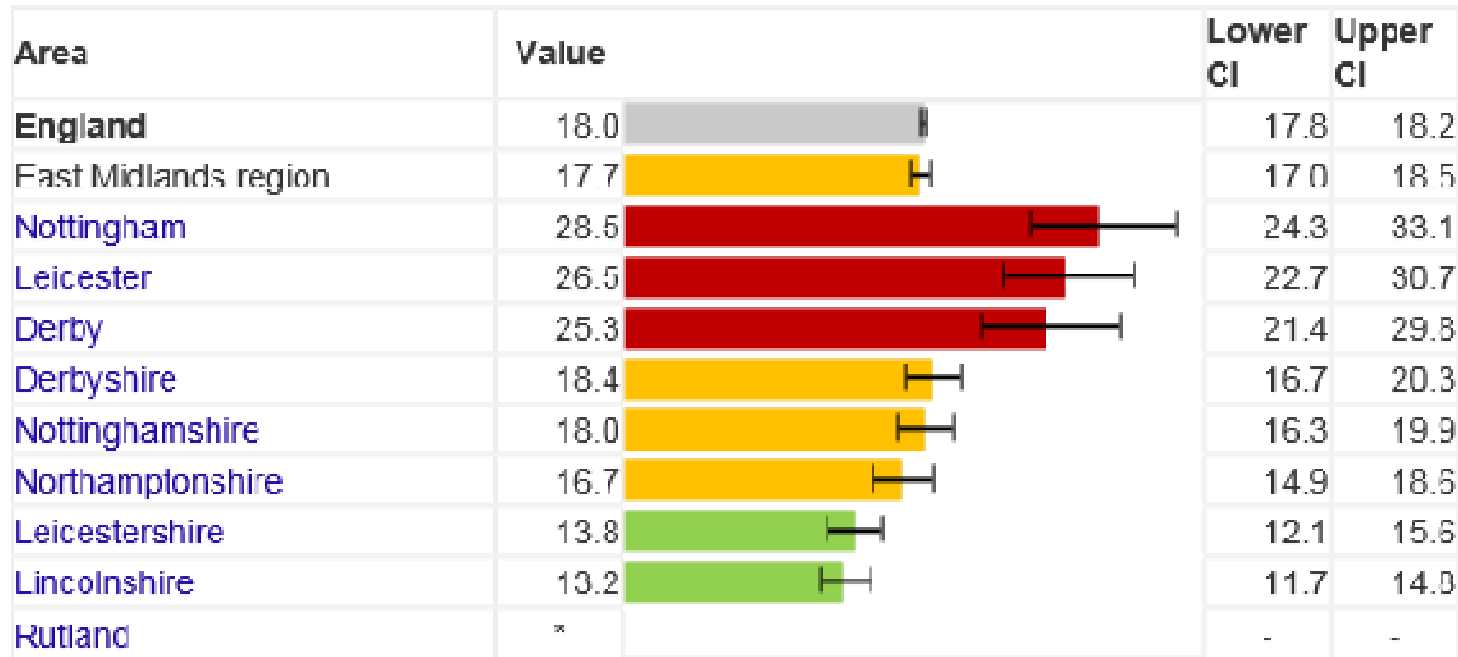
Source: Calculated by Public Health England: Clinical Epidemiology Knowledge and Intelligence from data from the Health and Social Care Information Centre (HSCIC) - Hospital Episode Statistics (HES) and Office for National Statistics (ONS) - Mid Year Population Estimates

Indicator on Y axis Hospital admission rate due to liver disease (Persons)

 Export chart as image



Under 75s mortality



Area	Value	Lower CI	Upper CI
England	18.0	17.8	18.2
East Midlands region	17.7	17.0	18.5
Nottingham	28.5	24.3	33.1
Leicester	26.5	22.7	30.7
Derby	25.3	21.4	29.8
Derbyshire	18.4	16.7	20.3
Nottinghamshire	18.0	16.3	19.9
Northamptonshire	16.7	14.9	18.5
Leicestershire	13.8	12.1	15.6
Lincolnshire	13.2	11.7	14.0
Rutland	*	-	-

Source: Public Health England (based on ONS source data)



PREVENTION

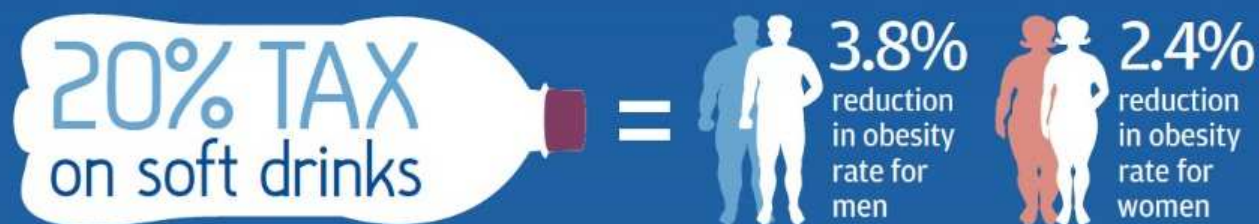
POLICY MAKERS

Introduce a **minimum price of 50p** to reduce alcohol consumption.

PROJECTED MINIMUM PRICE PER UNIT OF ALCOHOL AND RESULTING PERCENTAGE DECREASE IN CONSUMPTION⁵



Introduce a **tax on soft drinks** to reduce sugar intake⁹.





CASE FINDING – RISK FACTORS

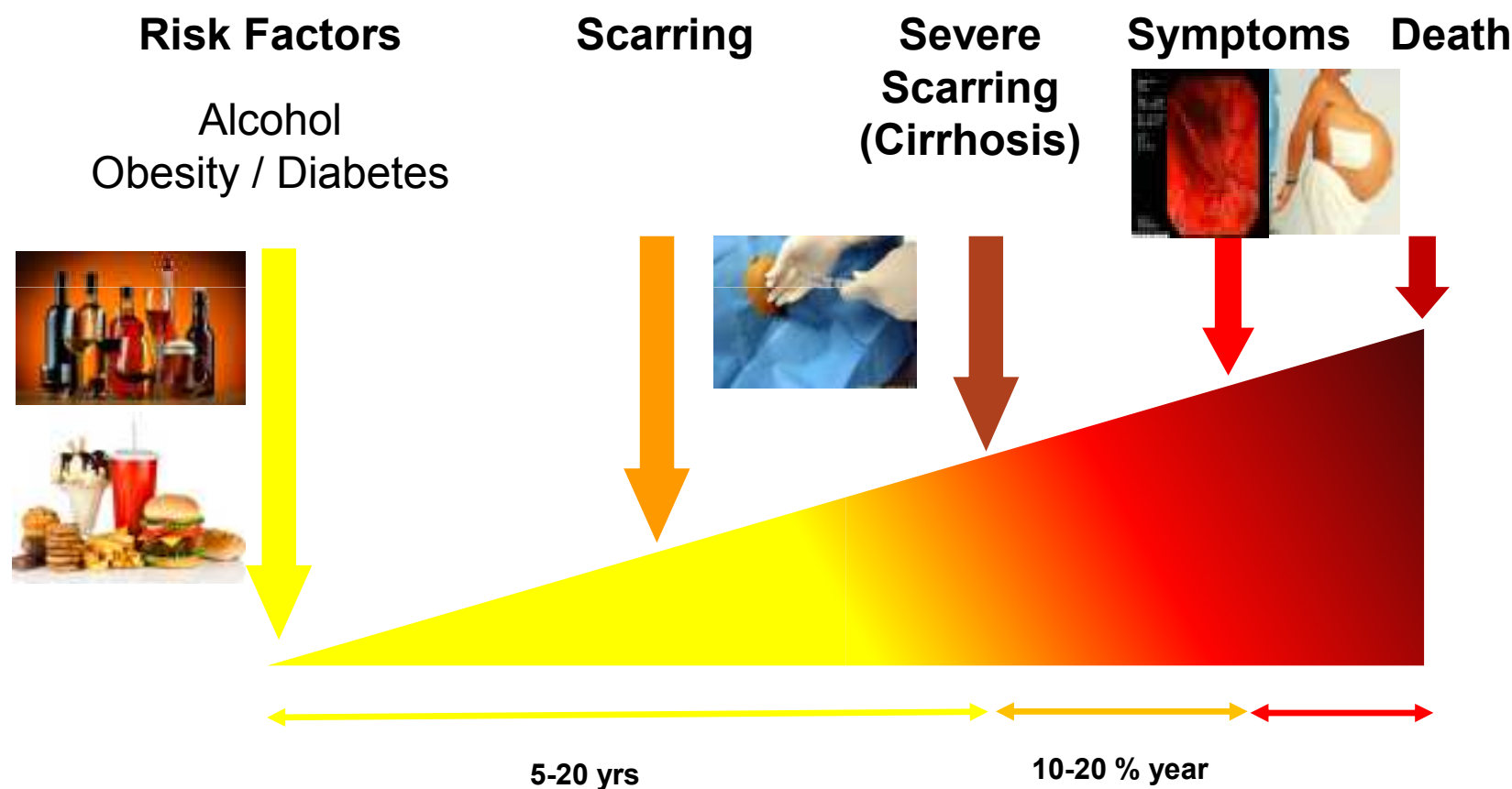


The Scarred Liver Project

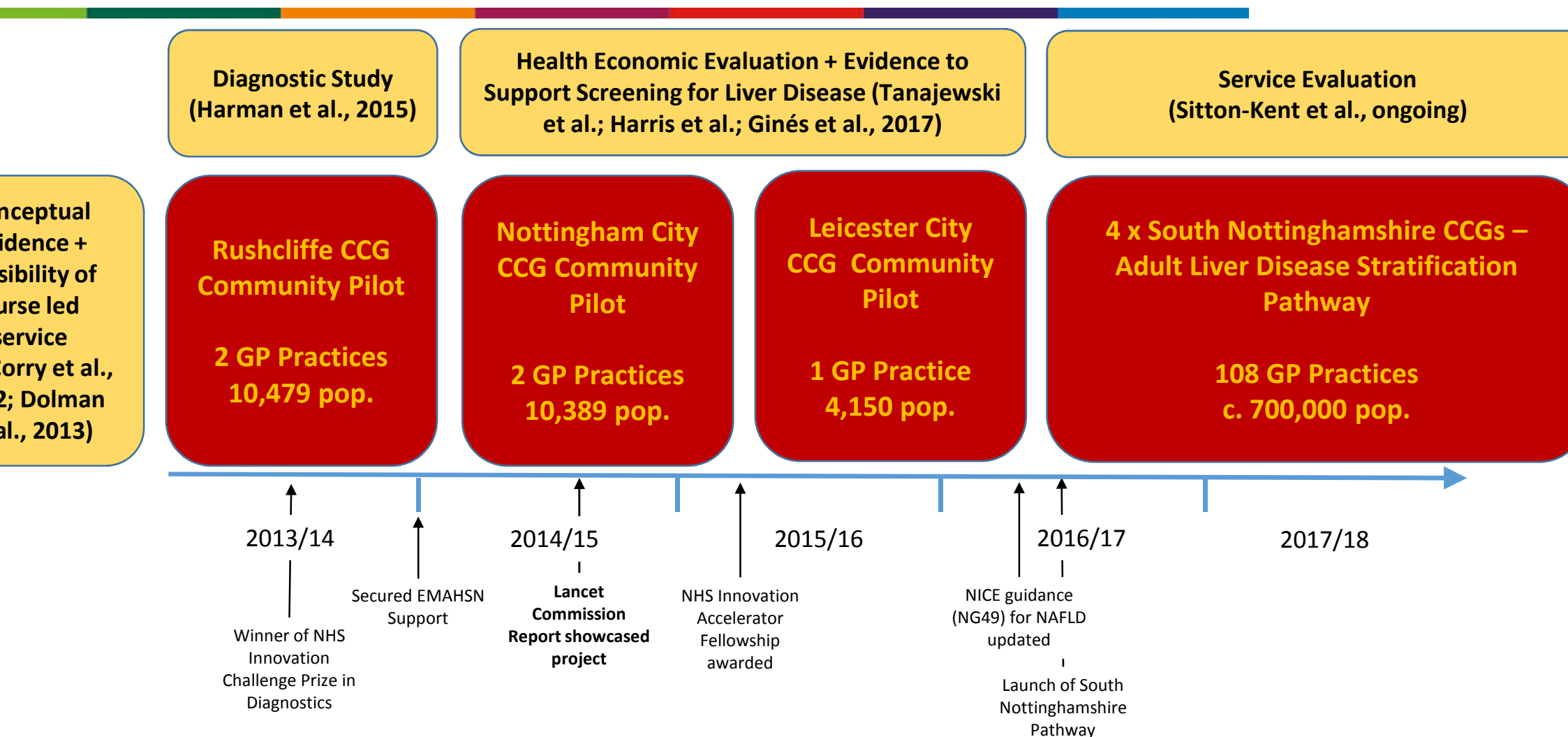
**A novel diagnostic pathway to detect
significant liver disease in the community**

Mr Nick Hamilton and Dr Rebecca Har

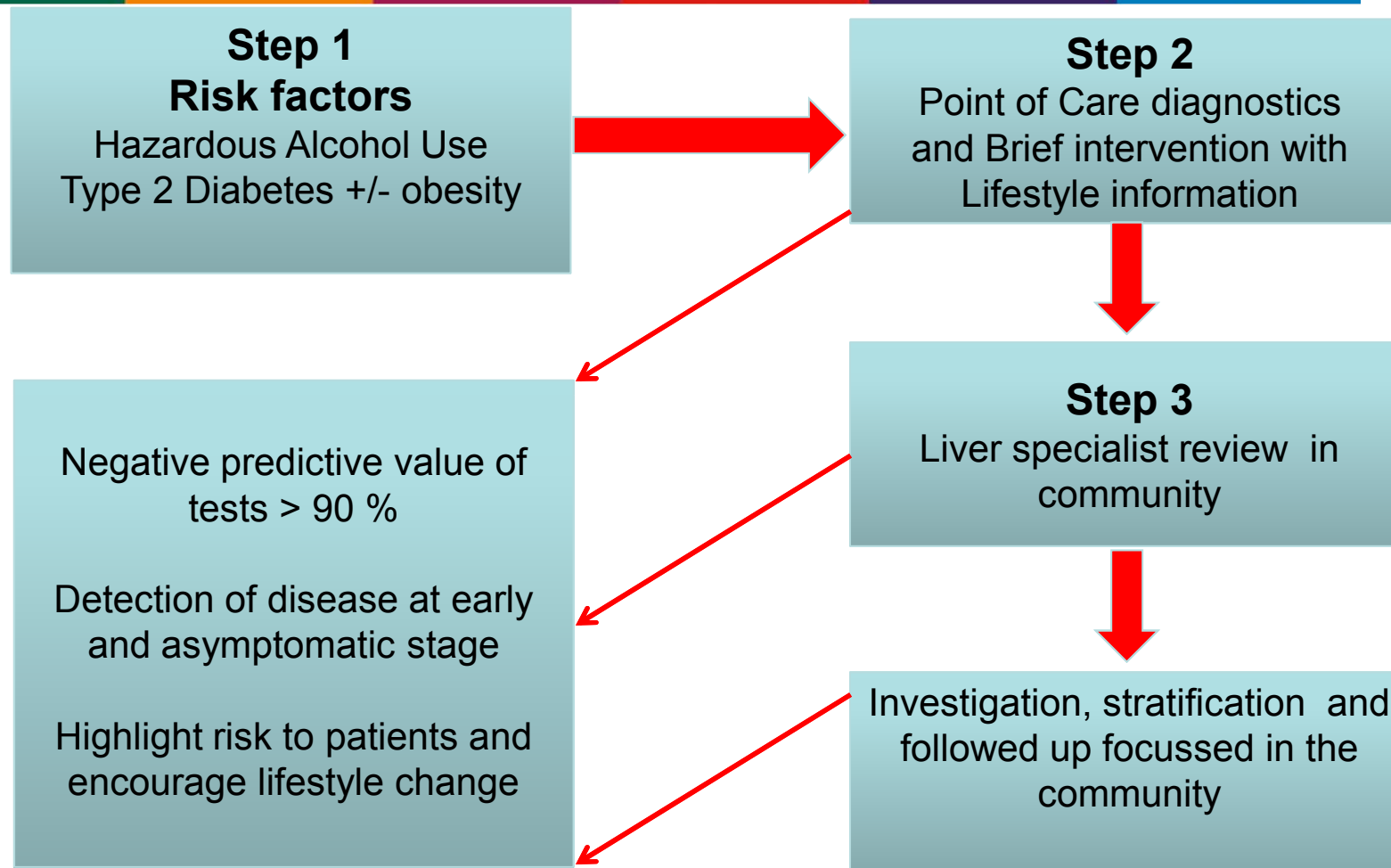
Natural History of Chronic Liver Disease



Evolution of the clinical pathway



3 step pathway



Harman et al BMJ open 2015



THE WAY FORWARD TOGETHER?