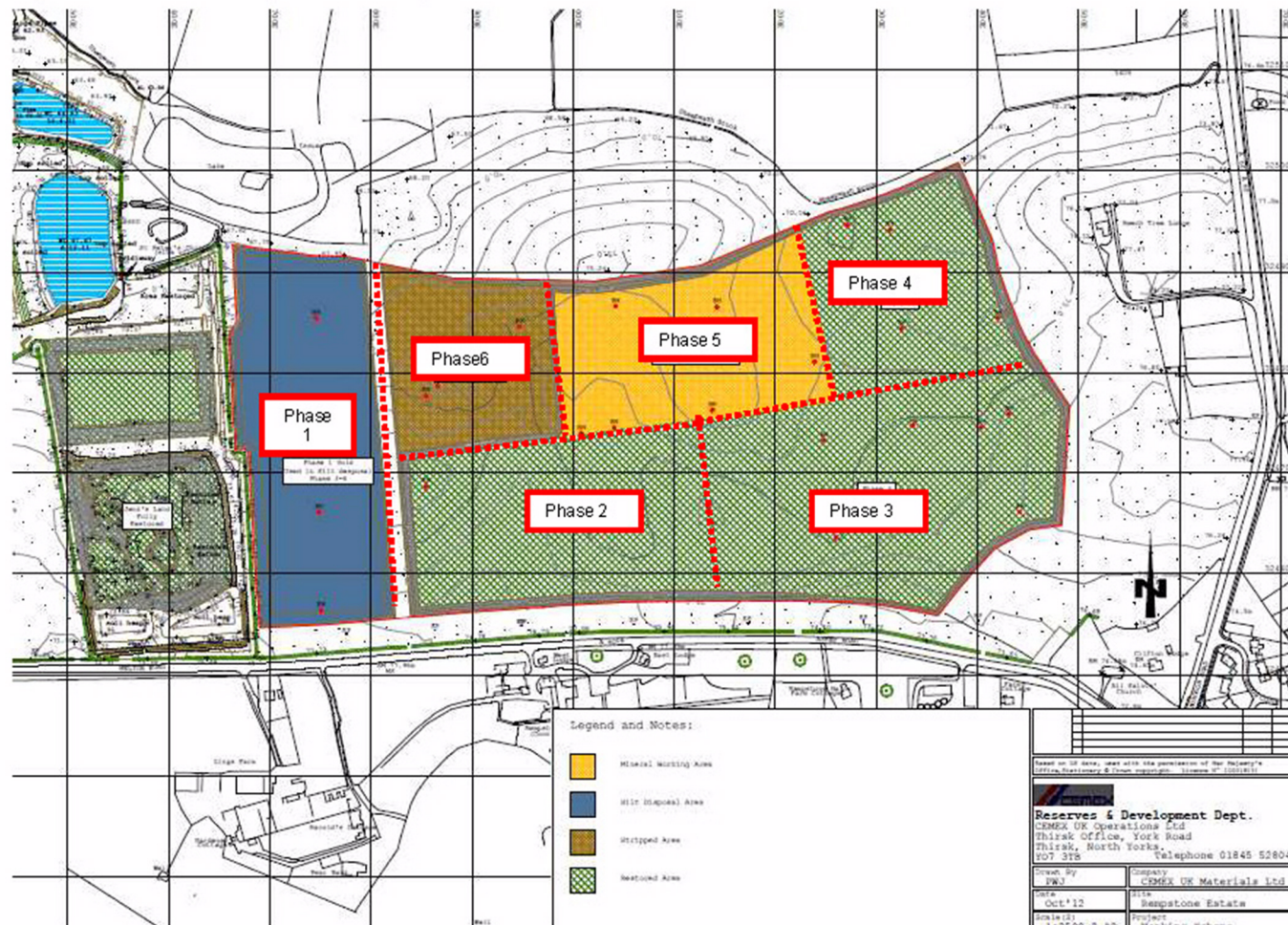


Figure 9 Phase 5 of Proposed Development



K0300_EastLeake_Rep1Rev0.doc

Page 15 of 27



**Nottinghamshire
County Council**

Application to consolidate previous planning permissions and an extension (Rempstone) of existing quarry for sand and gravel extraction with restoration to agriculture and conservation wetland.
Ashby Road, Rempstone, Nottinghamshire.
Planning Application No. 8/14/01781/CMA

This map is reproduced from Ordnance Survey material with the permission of Ordnance Survey on behalf of the Controller of Her Majesty's Stationery Office © Crown copyright.
Unauthorised reproduction infringes Crown copyright and may lead to prosecution or civil proceedings. (1000019713) (2015)



Not to Scale
Produced by: JW
Date: OCTOBER 2015

PLAN 2