

Community Safety

Chris Walker

Temp. Group Manager, Safer and
Engaged Communities



**Nottinghamshire
County Council**

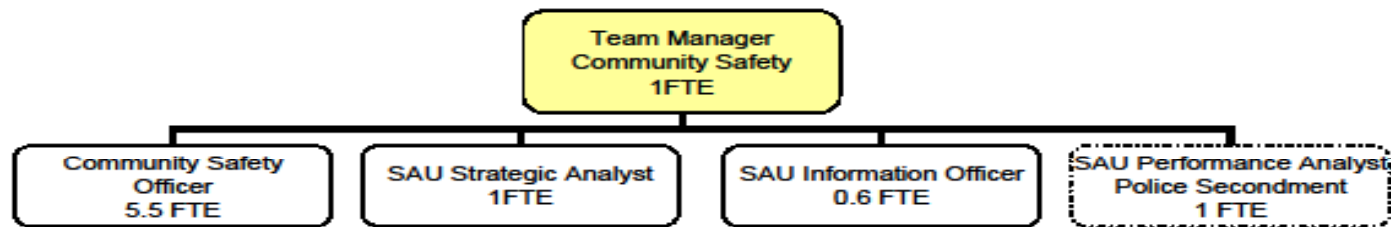
Background

- 1998 Crime and Disorder Act
 - Community Safety Partnerships and statutory partners
- County Council response and countywide approaches
- Community Safety Team currently sit in PPCS
- Improved performance on crime and anti social behaviour now under challenge

Community Safety Team

Structure Chart for Community Safety

Ref: PPCS 1.2.1



Version: 3.0

Date: 22 Mar 12

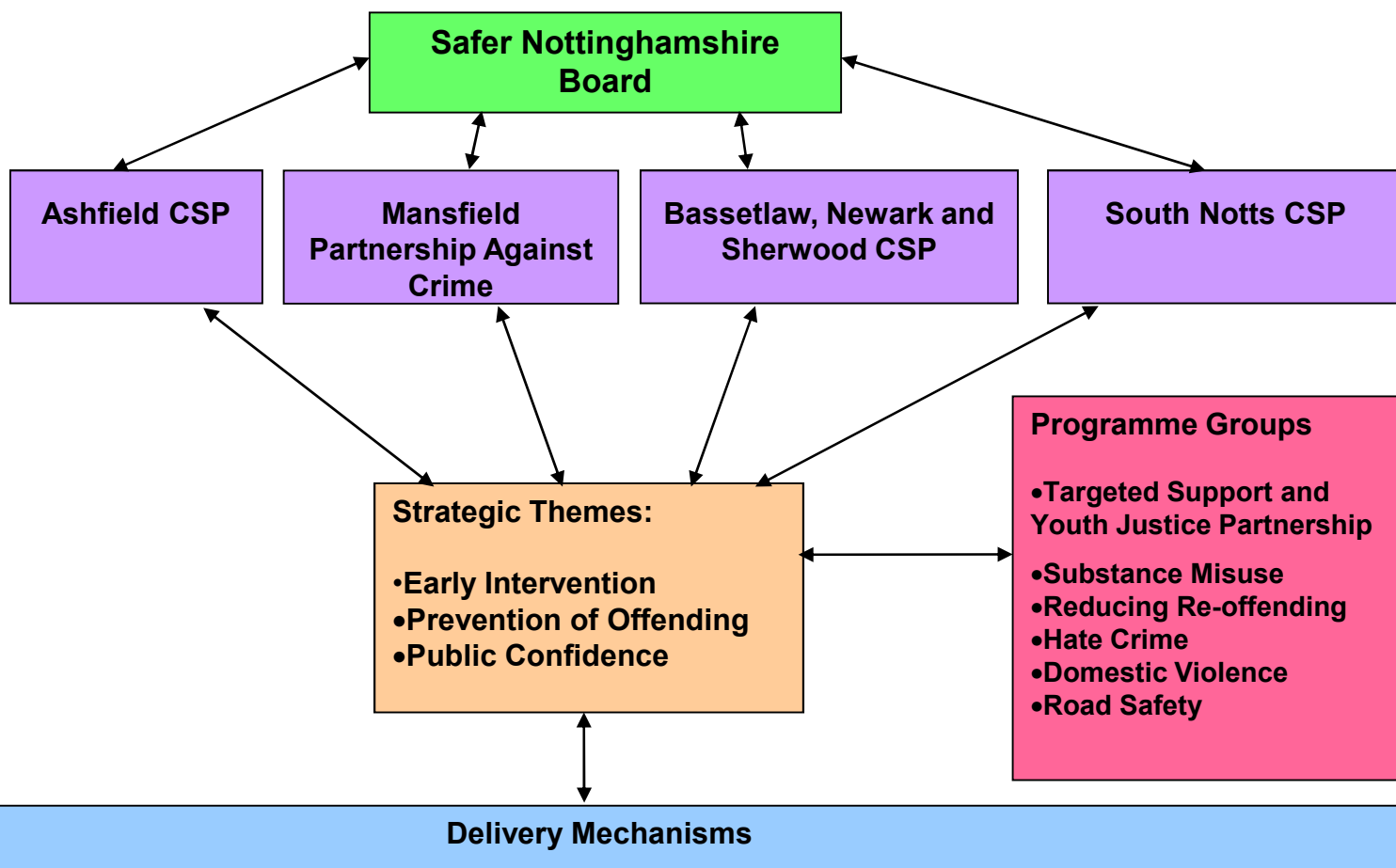
Geographic and Thematic

- Community Safety Officer role.
 - Thematic leads (DV, ASB, YP, Prevent, Hate Crime)
 - Geographic leads (BNS, South Notts, Ashfield/Mansfield)
- Safer Nottinghamshire Board role.
- Budget.
- High profile initiatives: support for Multi Agency Risk Assessment Conferences, I Pledge, In Our Hands, Car Cruising, Partnership Plus Areas

Community Safety Budget 2013/14

- **Staffing budget - £486K**
 - *Manager, 5.5 fte CSOs, Strategic Analyst, Information Officer, Business Support*
- **Initiatives budget - £564K**
 - *£200K contribution to SNB*
 - *£120K contribution to MARACs*

Safer Nottinghamshire Board: Delivery Framework



**Nottinghamshire
County Council**

Strategic Analytical Unit

- Strategic intelligence assessment – new role linking with PCC strategic assessment
- SNB performance – Performance Group
- Target setting and performance for all SNB delivery groups
- Data management and performance of Supporting Families Programme

Performance

- At end of 2012/13 overall crime levels in the county were at their lowest level for thirty years.
- However, first quarter figures showed marked rise in crime statistics (Q2 figures at next Committee meeting)
- Challenge to Partnership Plus Areas, CSPs and SNB
- Gold Groups

Cross Cutting

- Mainstream core services are key for delivering community safety.
- Close work with:
 - Trading Standards (doorstep calling, alcohol issues)
 - Targeted Support Youth Justice Services (youth crime)
 - Safeguarding (Adults and Children)
 - Supporting Families (vulnerable families)
 - Multi Agency Safeguarding Hub (vulnerable adults)
 - Highways and Rights of Way (lighting, environment, gating orders)
- Potential for more integrated services.

Future Challenges

- Crime reductions – sustainability issues.
- Still adjusting to Police and Prime Commissioner role and how work develops around them.
- Finding new ways of working with less resources – options for integrating services.
- Working with partners who are also experiencing these pressures.