

# PLAN 4

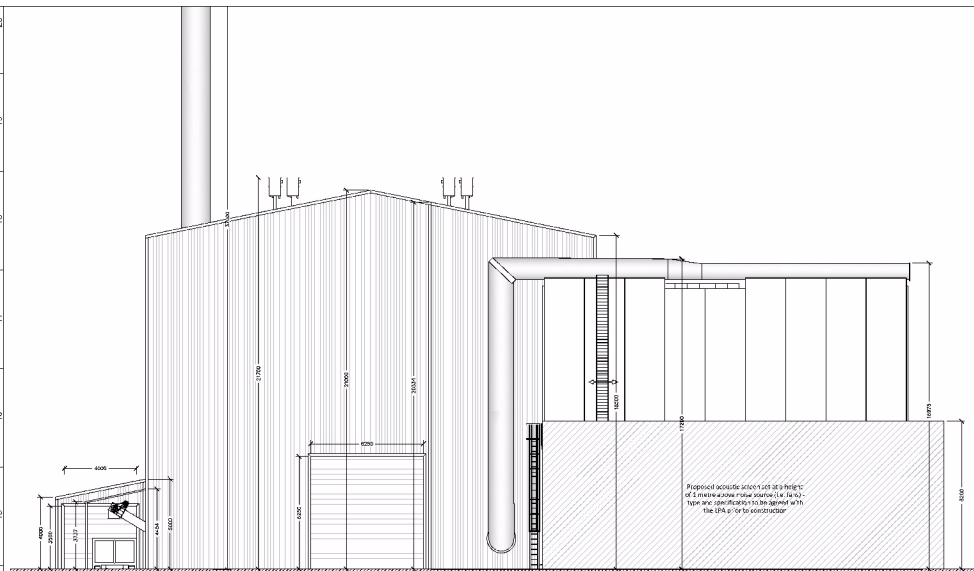


Figure 1: Elevation facing West-South-West (WSW)

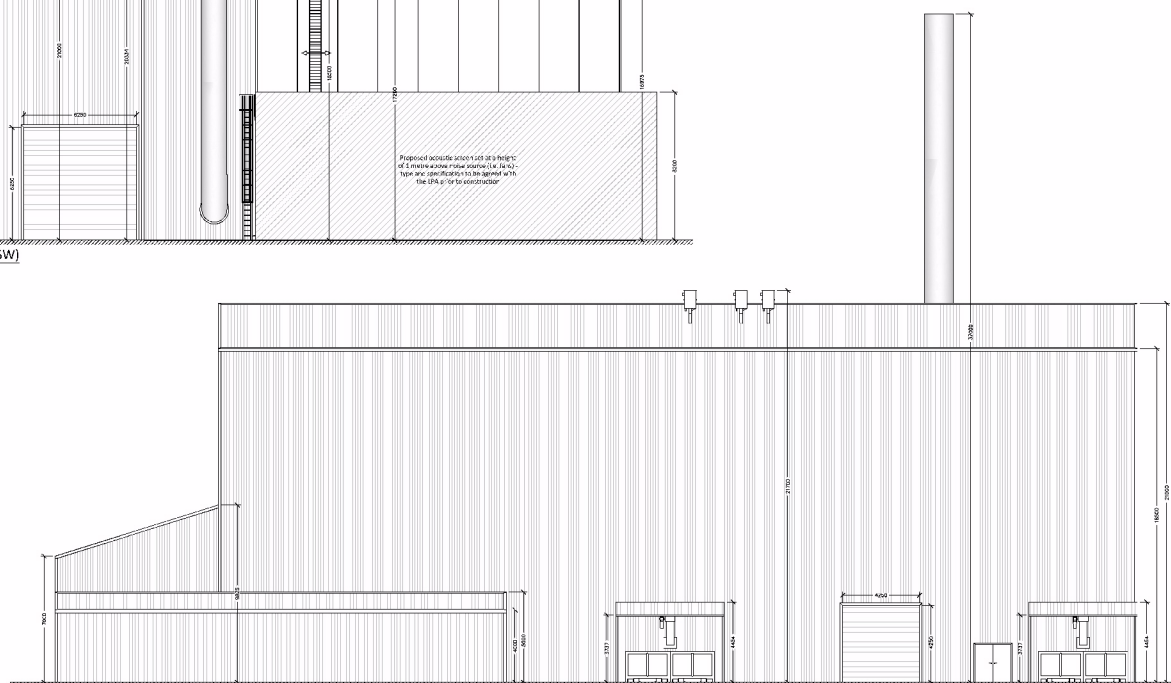


Figure 2: Elevation facing North-North-West (NNW)

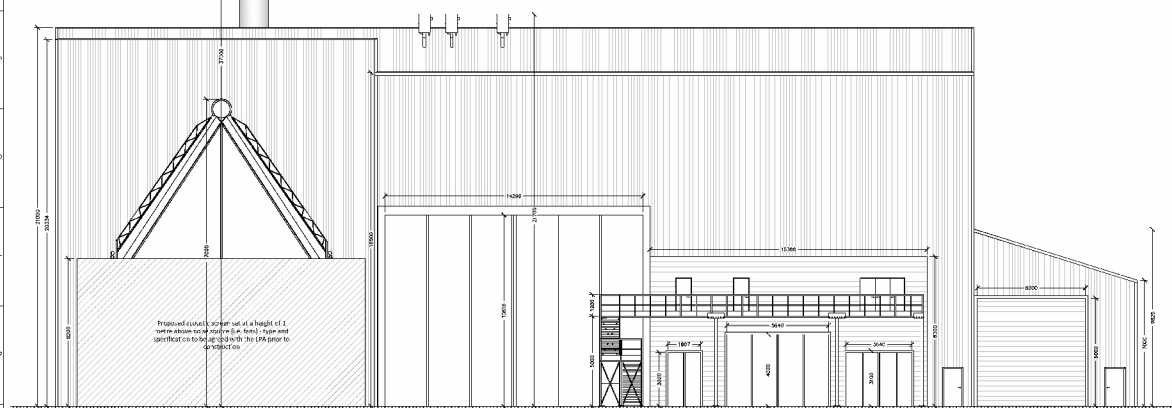


Figure 3: Elevation facing South-South-East (SSE)

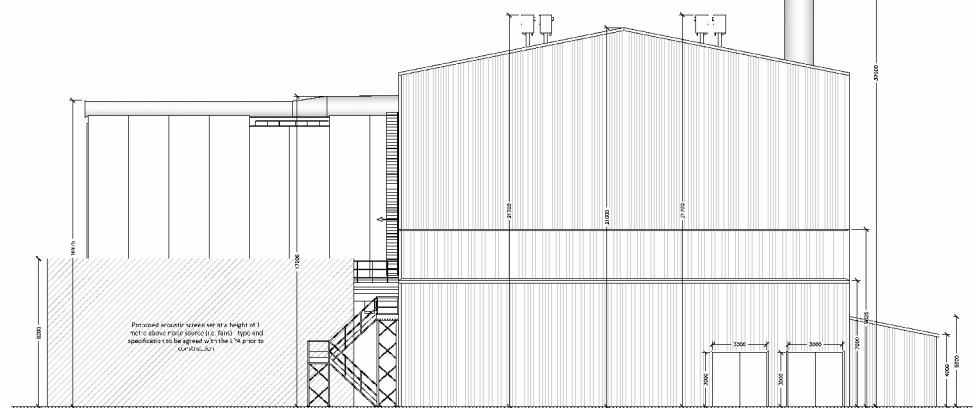


Figure 4: Elevation facing East-North-East (ENE)



**Nottinghamshire  
County Council**

The Erection of 2 New Industrial Buildings and Installation of 7MW (approximate) Wood Fuelled Renewable Energy Biomass Plant, retaining existing wood recycling and composting operations. John Brooke (Sawmills) Limited,  
The Sawmill, Fosse Way, Widmerpool.  
Planning Application No. 8/13/02185/CMA

This map is reproduced from Ordnance Survey material with the permission of Ordnance Survey on behalf of the Controller of Her Majesty's Stationery Office © Crown copyright.  
Unauthorised reproduction infringes Crown copyright and may lead to prosecution or civil proceedings. (1000019713) (2014)



Not to Scale  
Produced by: JW  
Date: APRIL 2014