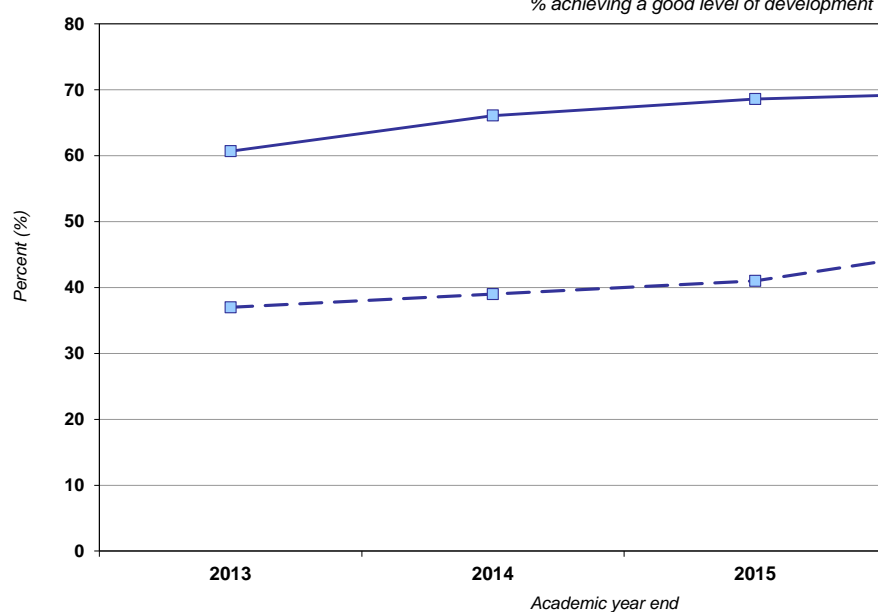


Closing the Gap – FSM against Non FSM outcomes

Achievements at Early Years Foundation Stage Profile Time Series 2013 - 2016

% achieving a good level of development



		2013	2014
Nottinghamshire LA	Non-FSM	60.7	66.1
	FSM	37.0	39.0
	FSM / Non-FSM GAP	23.7	27.1
National	Non-FSM	55.2	63.7
	FSM	36.2	44.8
	FSM / Non-FSM GAP	19.0	18.9

Nottinghamshire Districts	Ashfield	Non-FSM	56.3	62.7
		FSM	38.2	36.7
		GAP	18.1	26.0
	Bassetlaw	Non-FSM	51.7	60.9
		FSM	29.6	43.5
		GAP	22.1	17.4
	Broxtowe	Non-FSM	61.7	64.2
		FSM	42.4	40.1
		GAP	19.3	24.1
	Gedling	Non-FSM	61.7	67.5
		FSM	41.8	37.6
		GAP	19.9	29.9
	Mansfield	Non-FSM	59.3	66.3
		FSM	38.4	38.5
		GAP	20.9	27.8

Figures represent percent of pupils attaining the measure with the exception of the gap which represents the percentage point difference between the two groups

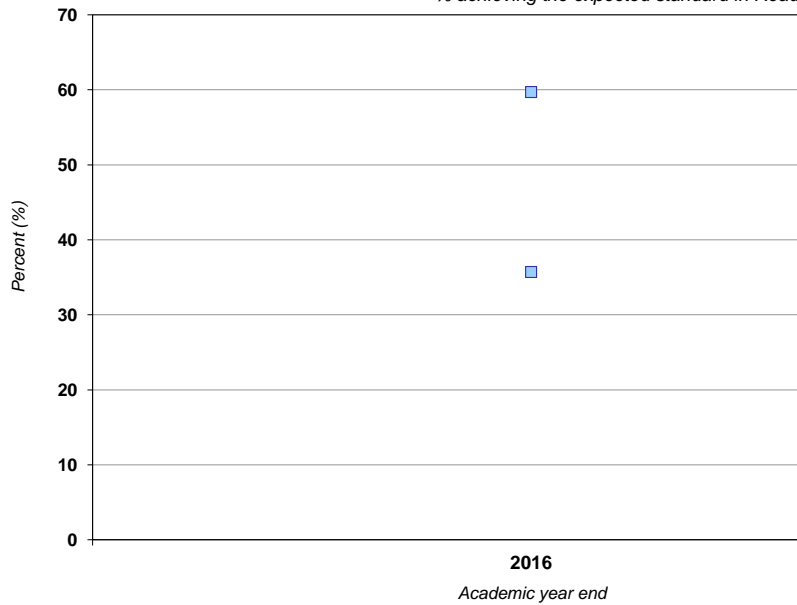


Closing the Gap – FSM6 against Non FSM6 outcomes

Achievements in Key Stage 2

2016

% achieving the expected standard in Reading



Nottinghamshire LA		Non-FSM6
		FSM6
		FSM6 / Non-FSM6 GAP
National		Non-FSM6
		FSM6
		FSM6 / Non-FSM6 GAP

Nottinghamshire Districts	Ashfield	Non-FSM6
		FSM6
		GAP
	Bassetlaw	Non-FSM6
		FSM6
		GAP
	Broxtowe	Non-FSM6
		FSM6
		GAP
	Gedling	Non-FSM6
		FSM6
		GAP
	Mansfield	Non-FSM6
		FSM6
		GAP
	Newark and Sherwood	Non-FSM6
		FSM6
		GAP
	Rushcliffe	Non-FSM6
		FSM6
		GAP

Figures represent percent of pupils attaining the measure with the exception of the gap which represents the percent point difference between the two groups

Data source:

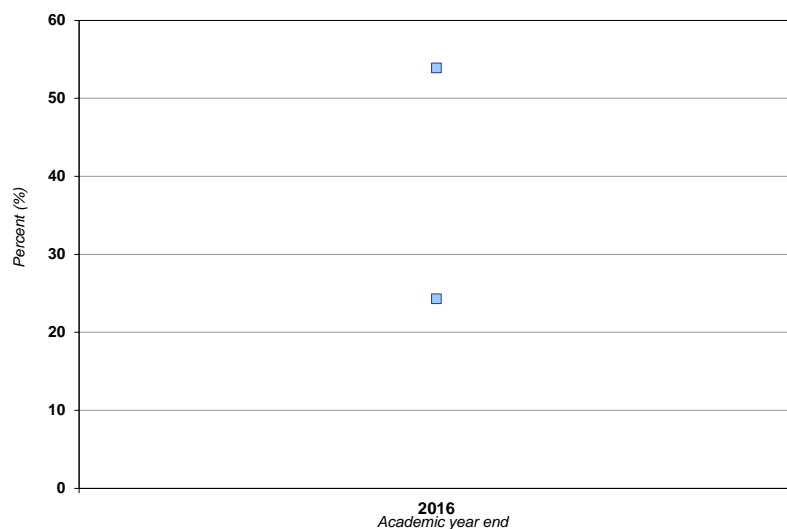
Local data - KS2 provisional
January 2016 Census



Performance, Intelligence & Policy
Nottinghamshire Local Authority

Closing the Gap –White British FSM boys against white British Non FSM boys outcomes

Achievements in Key Stage 2 Time Series 2016



			2016
Nottinghamshire LA		White British Non-FSM	53.9
		White British FSM	24.3
		FSM / Non-FSM GAP	29.6

Nottinghamshire Districts	Ashfield	White British Non-FSM	51.5
		White British FSM	20.5
		GAP	31.0
	Bassetlaw	White British Non-FSM	54.0
		White British FSM	29.5
		GAP	24.5
	Broxtowe	White British Non-FSM	58.3
		White British FSM	26.8
		GAP	31.5
	Gedling	White British Non-FSM	50.5
		White British FSM	22.7
		GAP	27.8
	Mansfield	White British Non-FSM	45.1
		White British FSM	21.3
		GAP	23.8
	Newark and Sherwood	White British Non-FSM	53.5
		White British FSM	25.4
		GAP	28.1
	Rushcliffe	White British Non-FSM	63.2
		White British FSM	30.3
		GAP	32.9

Figures represent percent of pupils attaining the measure with the exception of the gap which represents the percentage point difference between the two groups

Data source:

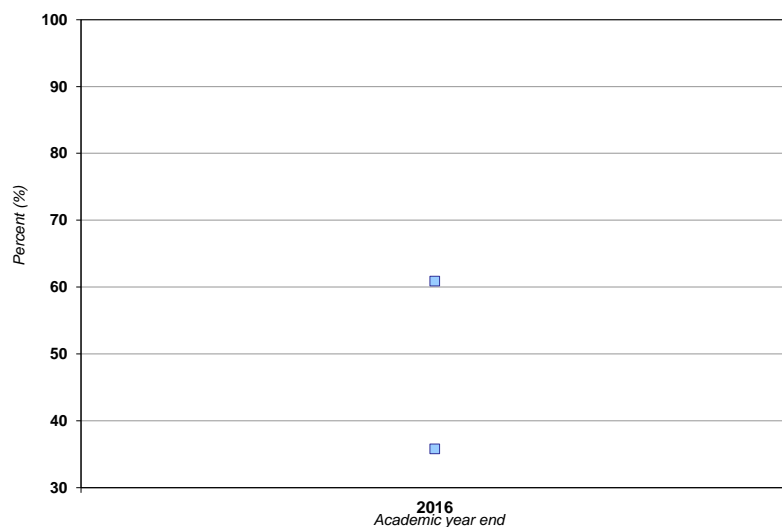
Local data - KS2 provisional data
January 2016 Census



Performance, Intelligence & Policy
Nottinghamshire Local Authority

Closing the Gap –White British FSM girls against white British Non FSM girls outcomes

Achievements in Key Stage 2 2016



		2016
Nottinghamshire LA	White British Non-FSM	60.9
	White British FSM	35.8
	FSM / Non-FSM GAP	25.1

Nottinghamshire Districts	Ashfield	White British Non-FSM	54.4
		White British FSM	35.1
		GAP	19.3
	Bassetlaw	White British Non-FSM	56.3
		White British FSM	32.4
		GAP	23.9
	Broxtowe	White British Non-FSM	60.8
		White British FSM	41.7
		GAP	19.1
	Gedling	White British Non-FSM	58.7
		White British FSM	35.3
		GAP	23.4
	Mansfield	White British Non-FSM	60.3
		White British FSM	36.1
		GAP	24.2
	Newark and Sherwood	White British Non-FSM	59.6
		White British FSM	30.9
		GAP	28.7
	Rushcliffe	White British Non-FSM	74.6
		White British FSM	50.0
		GAP	24.6

Figures represent percent of pupils attaining the measure with the exception of the gap which represents the percentage point difference between the two groups

Data source:

Local data - KS2 provisional data
January 2016 Census

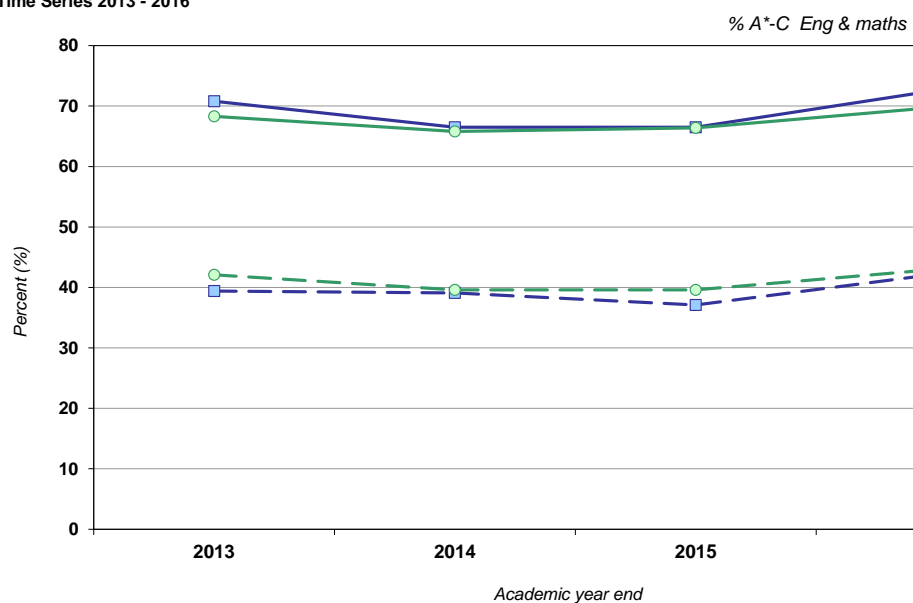


Performance, Intelligence & Policy
Nottinghamshire Local Authority

Closing the Gap – FSM6 against Non FSM6 outcomes

Achievements in Key Stage 4 (GCSE and equivalent)

Time Series 2013 - 2016



		2013	2014	2015
Nottinghamshire LA	Non-FSM6	70.8	66.5	66.5
	FSM6	39.4	39.1	37.1
	FSM6 / Non-FSM6 GAP	31.4	27.4	29.4
National	Non-FSM6	68.3	65.8	66.4
	FSM6	42.1	39.6	39.6
	FSM6 / Non-FSM6 GAP	26.2	26.2	26.8

Nottinghamshire Districts	Ashfield	Non-FSM6	65.2	61.6	62.2
		FSM6	38.6	36.0	35.0
		GAP	26.6	25.6	27.2
	Bassetlaw	Non-FSM6	73.5	69.9	74.2
		FSM6	52.0	56.7	46.2
		GAP	21.5	13.2	28.0
	Broxtowe	Non-FSM6	65.3	65.5	64.2
		FSM6	36.0	33.5	37.7
		GAP	29.3	32.0	26.5
	Gedling	Non-FSM6	69.0	65.0	66.9
		FSM6	37.9	36.3	45.0
		GAP	31.1	28.7	21.9
	Mansfield	Non-FSM6	67.4	63.2	60.2
		FSM6	33.0	35.2	32.5
		GAP	34.4	28.0	27.7
	Newark and Sherwood	Non-FSM6	70.2	58.9	58.2
		FSM6	32.7	28.0	24.0
		GAP	37.5	30.9	34.2
	Rushcliffe	Non-FSM6	82.4	77.6	75.4
		FSM6	51.4	51.7	42.9
		GAP	31.0	25.9	32.5

Figures represent percent of pupils attaining the measure with the exception of the gap which represents the percentage point difference between the two groups
 2014 figures relate to first entries. Prior figures relate to best entries

Data source:

Local data - KS4 AAT file

National / Stat Neighbour data - SFR

January 2016 Census



Performance, Intelligence & Policy
 Nottinghamshire Local Authority