

Children and Young People's Committee

Monday, 16 January 2017 at 10:30

County Hall, County Hall, West Bridgford, Nottingham, NG2 7QP

AGENDA

- | | | |
|----|---|---------|
| 1 | Minutes of the last meeting held on 19 December 2016 | 3 - 6 |
| 2 | Apologies for Absence | |
| 3 | Declarations of Interests by Members and Officers:- (see note below) (a) Disclosable Pecuniary Interests (b) Private Interests (pecuniary and non-pecuniary) | |
| 4 | Rejuvenating secondary education in Newark in partnership with all stakeholders through the Torch Academy Gateway Trust - Presentation by John Tomasevic, CEO Torch Academy Gateway Trust. | |
| 5 | Response to petition - Fairness4Siblings | 7 - 10 |
| 6 | Nottinghamshire's small schools working group | 11 - 24 |
| 7 | Deletion of two posts from the Education, Standards and Inclusion division to secure departmental savings | 25 - 30 |
| 8 | Rota visits to children's homes - Autumn 2016 | 31 - 34 |
| 9 | National Children and Adult Services Conferemce 2016 - 2-4 November 2016 | 35 - 38 |
| 10 | Work programme | 39 - 44 |

Notes

- (1) Councillors are advised to contact their Research Officer for details of any Group Meetings which are planned for this meeting.
- (2) Members of the public wishing to inspect "Background Papers" referred to in the reports on the agenda or Schedule 12A of the Local Government Act should contact:-

Customer Services Centre 0300 500 80 80

- (3) Persons making a declaration of interest should have regard to the Code of Conduct and the Council's Procedure Rules. Those declaring must indicate the nature of their interest and the reasons for the declaration.

Councillors or Officers requiring clarification on whether to make a declaration of interest are invited to contact Alison Fawley (Tel. 0115 993 2534) or a colleague in Democratic Services prior to the meeting.

- (4) Councillors are reminded that Committee and Sub-Committee papers, with the exception of those which contain Exempt or Confidential Information, may be recycled.
- (5) This agenda and its associated reports are available to view online via an online calendar - <http://www.nottinghamshire.gov.uk/dms/Meetings.aspx>

Meeting CHILDREN & YOUNG PEOPLE'S COMMITTEE

Date 19 December 2016 (commencing at 10.30am)

Membership

Persons absent are marked with an 'A'

COUNCILLORS

John Peck JP (Chairman)
Kate Foale (Vice-Chairman)
Liz Plant (Vice-Chairman)

| | |
|----------------|----------------|
| John Allin | Keith Longdon |
| Maureen Dobson | Philip Owen |
| Boyd Elliott | Sue Saddington |
| Alice Grice | A Andy Sissons |

A Ex-officio (non-voting)
Alan Rhodes

CO-OPTED MEMBERS (NON-VOTING)

A Vacancy
Mr David Richards JP

OFFICERS IN ATTENDANCE

| | |
|----------------|--|
| Jude Burgess | Children, Families and Cultural Services |
| Steve Edwards | Children, Families and Cultural Services |
| Linda Foster | Children, Families and Cultural Services |
| Derek Higton | Children, Families and Cultural Services |
| Laurence Jones | Children, Families and Cultural Services |
| Irene Kakoulis | Children, Families and Cultural Services |
| Pip Milbourne | Children, Families and Cultural Services |
| Alison Fawley | Resources |
| Geoff Russell | Resources |

MINUTES OF THE LAST MEETING

The minutes of the meeting held on 21 November 2016, having been circulated to all Members, were taken as read and were signed by the Chair.

APOLOGIES FOR ABSENCE

Apologies for absence were received from Councillor Andy Sissons.

DECLARATIONS OF INTEREST

None.

THE ESTABLISHMENT AND FUNDING ROUTES FOR NEW SCHOOLS

The Chair introduced the report and lead officers responded to questions and comments from Members.

RESOLVED 2016/071

That:

- 1) The involvement of the DfE in the establishment and building of new schools in Nottinghamshire, where circumstances enable the financial risks to be reduced/removed for the County Council and where school places could be provided at a much earlier date than allowed by housing developer education contributions and associated trigger payments, be approved.
- 2) A review of the Schools Policy and the Place Planning and Schools Capital Strategy (2014) to reflect changes to national policy and funding including the Free School programme and to identify the 'direct route' as the Committee's preferred route to fund new schools wherever possible, be recommended.
- 3) The strategic public place planning information that the County holds with regard to where new schools may be required as a result of house building and basic need, if relevant, should be shared through a public event, or other effective means of public notice open to all national and local sponsors of new schools (Free Schools), be approved.

YOUTH HOMELESSNESS PREVENTION PLAN 2016-2020

The Chair introduced the report and lead officers responded to questions and comments from Members.

RESOLVED 2016/072

That the Youth Homelessness Prevention Plan 2016-2020, attached as appendix 1 to the report, be approved.

NOTTINGHAMSHIRE EARLY YEARS IMPROVEMENT PLAN 2015-2017 - UPDATE

The Chair introduced the report and lead officers responded to questions and comments from Members.

RESOLVED 2016/073

That the progress with the Nottinghamshire Early Years Improvement Plan 2015-2017 be noted.

NOTTINGHAMSHIRE OUTSTANDING ACHIEVEMENT 4UTH AWARD 2016

The Chair introduced the report and lead officers responded to questions and comments from Members.

RESOLVED 2016/074

That the recent activity of the Youth Service in facilitating the delivery of Nottinghamshire County Council's sixth annual Outstanding Achievement 4Uth Award be noted.

CHANGES TO THE STAFFING ESTABLISHMENT IN THE FAMILY SERVICE

Laurence Jones introduced the report and responded to questions and comments from Members.

RESOLVED 2016/075

That the changes to the staffing establishment of the Family Service, as detailed in paragraphs 4 and 6 of the report, be approved.

LOCAL AUTHORITY GOVERNOR APPOINTMENTS TO SCHOOL GOVERNING BODIES DURING THE PERIOD 1 JULY TO 31 OCTOBER 2016

RESOLVED 2016/076

That the appointment of Local Authority governors to school governing bodies during the period 1 July to 31 October 2016, as listed in paragraph 4 of the report, be noted.

WORK PROGRAMME

RESOLVED 2016/077

That the Committee's work programme be noted and updated as agreed.

The meeting closed at 11.05 am.

CHAIRMAN

16 January 2017**Agenda Item: 05****REPORT OF THE ACTING SERVICE DIRECTOR, EDUCATION STANDARDS
AND INCLUSION****RESPONSE TO PETITION: FAIRNESS4SIBLINGS****Purpose of the Report**

1. This report informs Committee of the petition from the Fairness4Siblings campaign group which was presented to Full Council on 24 November 2016. The report also asks the Committee to note that the petition has been included as part of the response to the statutory consultation on admission arrangements for 2018-2019 and the lead petitioner will be informed accordingly.

Information and Advice

2. The decision of Elected Members to change the oversubscription criteria for Nottinghamshire community and voluntary controlled schools, made by the Children and Young People's Committee on 9 March 2015, was informed by responses to the formal consultation carried out in compliance with the School Admissions Code between 1 December 2014 and 31 January 2015.
3. Elected Members within Nottinghamshire take an active interest in admissions, are knowledgeable and understand admissions issues. They talk to residents in their areas, receive correspondence and other enquiries about admissions and place planning. This all helps to inform their decision making, taking into account knowledge of their immediate local area, the wider local area of the whole County and the national context. They understand issues for families and know the implications of removing priority for out of catchment siblings in the admission oversubscription criteria for community and voluntary controlled schools.
4. In October 2014, at the request of Elected Members, cross-party admission workshops were organised. Elected Members had concerns that children living outside catchment but close to a school were sometimes unable to secure places at that school because places had been allocated to children who lived further away - sometimes at a considerable distance from the school - but had a sibling attending the school and therefore had priority within the oversubscription criteria.
5. Elected Members were also aware of the report from the Office of the Schools Adjudicator (OSA) 2013 which echoed the concerns outlined above that had already been clearly articulated within Nottinghamshire.

“Objections concerning priority for siblings also related to younger siblings retaining priority for a popular and oversubscribed school when a family moves a significant distance away from the school resulting in those new to the area, or first born children being unable to have a place because siblings, wherever they live, retain priority. The advantages for one family of keeping siblings at the same, popular school lead to disadvantages for other families who, in the worst case scenario, end up with children in different schools, while those from further away have their highest preference met and attend the same school.”

Cross-party agreement

6. There was cross-party agreement on the need to consult on this policy change. Members were of the view that the existing priority for out of catchment siblings needed to change if schools were to best serve the needs of local families. High priority within the oversubscription criteria is still given to children living in catchment and who have a brother or sister attending the school or the linked school. This supports families who wish their children to attend the same publicly funded local school.
7. The arrangements determined for 2016-2017 in March 2015 support the principle of fair access for all children to local schools. Out of catchment siblings are not excluded from consideration for places at a school, but are considered within the last criterion alongside all other children living out of catchment. Therefore, within that criterion, all children living closer to a school – whether or not they have a sibling attending the school – are ranked higher than all other children (with or without a sibling) who live further away from that school.

Petition and other views received by the Council

8. The County Council's admission arrangements - in particular, the change of priority within the oversubscription criteria - have been subject to challenge from a parents' campaign group called Fairness4Siblings. A petition from the group containing about 4,580 signatures was presented to Full Council on 24 November 2016 by Councillor John Peck. The group believes that the removal of priority for out of catchment siblings, which was consulted on during 2014-15 and determined in the arrangements for 2016-2017, is unfair and has disadvantaged them. At the request of the group, the petition has also been included as part of the response to the statutory consultation on admission arrangements for 2018-2019.
9. Key arguments presented by the group include:
 - siblings now attend different schools
 - the policy change is 'anti-family'
 - the change has been unfair, causing emotional and financial strain to some families
 - the change should have been phased over an extended period of time to reduce the adverse impact to those already with older siblings in a school before the policy was introduced
 - their belief that the consultation was inadequate.
10. These matters have been referred to the Office of the Schools Adjudicator (OSA) and the outcome is awaited.

11. Meetings have taken place between representatives of the Fairness4Siblings campaign group and with other parents affected by the change to the oversubscription criteria. These have included a meeting with the MP, Gloria De Piero, and representative parents in her constituency. There has also been a meeting of campaigners with the Chair of the Children and Young People's Committee and the Corporate Director for Children's Services.
12. The main purpose of the campaign is to request that the Council reinstates the priority previously given to out of catchment siblings.

Other Options Considered

13. No other options have been considered.

Reason/s for Recommendation/s

14. To inform Committee of the petition from the Fairness4Siblings campaign group which was presented to Full Council on 24 November 2016.

Statutory and Policy Implications

15. This report has been compiled after consideration of implications in respect of crime and disorder, finance, human resources, human rights, the NHS Constitution (public health services), the public sector equality duty, safeguarding of children and adults at risk, service users, sustainability and the environment and ways of working and where such implications are material they are described below. Appropriate consultation has been undertaken and advice sought on these issues as required.

RECOMMENDATION/S

That:

- 1) the Committee notes the petition from the Fairness4Siblings campaign group which was presented to Full Council on 24 November 2016
- 2) the Committee notes that the petition has also been included as part of the response to the statutory consultation on admission arrangements for 2018-2019 and
- 3) the lead petitioner be informed accordingly.

Marion Clay
Acting Service Director, Education Standards and Inclusion

For any enquiries about this report please contact:

Mary Kiely
Access and Admissions Strategy Team Manager
T: 0115 9774274
E: mary.kiely@nottscs.gov.uk

Constitutional Comments (LM 16/12/16)

16. The recommendations in the report fall within the Terms of Reference of the Children and Young People's Committee.

Financial Comments (TMR 16/12/16)

17. There are no financial implications arising from this report.

Background Papers and Published Documents

Except for previously published documents, which will be available elsewhere, the documents listed here will be available for inspection in accordance with Section 100D of the Local Government Act 1972.

Nottinghamshire school admission arrangements 2016-2017 – report to Children and Young People's Committee on 9 March 2015

Electoral Division(s) and Member(s) Affected

All.

C0918

16 January 2017**Agenda Item: 06****REPORT OF THE ACTING SERVICE DIRECTOR, EDUCATION STANDARDS
AND INCLUSION****NOTTINGHAMSHIRE'S SMALL SCHOOLS WORKING GROUP****Purpose of the Report**

1. The purpose of this report is to inform Members of the progress of the small schools working group currently being developed across the County. The report aims to acknowledge and celebrate the achievements of small schools and to highlight some of the particular challenges faced by small schools at this time.
2. The report also seeks approval for a further report to be brought to the Committee when the impact of the new schools funding formula is known.

Information and Advice

3. Nottinghamshire's small schools are successful and popular with parents. Moreover, small schools are an integral part of Nottinghamshire's school provision and play an essential role in ensuring that Nottinghamshire County Council meets its statutory duty to provide a school place for every primary aged child.
4. As of October 2016, there are currently 281 primary schools in Nottinghamshire, of which 34 are Infant and 26 are junior schools. 62 of the 281 schools have cohorts of less than 150. 40 schools have fewer than 105 pupils and 11 schools have 60 or fewer pupils. These schools primarily serve small rural communities. However, a number of small schools are in urban areas geographically close to many other neighbouring larger schools. This contrasts to rural small schools that are quite geographically spread in some cases. There are 68 schools with a net capacity of less than 150, or, schools with a total number on roll of less than 150. There are 4 in Ashfield, 26 in Bassetlaw, 3 in Broxtowe, 5 in Gedling, 3 in Mansfield, 16 in Newark and 11 in Rushcliffe. Further information is attached as **Appendix 1**.
5. Small schools are an integral part of Nottinghamshire's provision of primary school places. Almost 25% of primary schools are small (under 150 pupils). Small schools have the total capacity to provide approximately 7,350 school places. As of October 2016, 6,813 pupils attend small schools from a primary school cohort of 69,648. Whilst some small schools are full and oversubscribed, taking the small schools as a whole, there is capacity in many. Some families select out of catchment small schools because they are seeking a nurturing environment for their child. Half of the small schools (34 out of 68) are Faith schools; there are currently 33 Church of England (C of E) Voluntary

Aided (VA) or Voluntary Controlled (VC) schools and 1 Roman Catholic (RC) small school across the County.

6. In December 2013, a delegation of small school head teachers requested a meeting with the Director of Children's Services to outline their particular concerns. These headteachers focussed on four key areas:
 - Finance – particularly the impact of the changes to the lump sum allocation to all schools
 - IT – particularly in relation to the cost of broadband to small schools
 - Special Educational Needs and Disability (SEND) – particularly in relation to the funding arrangements for pupils with SEND
 - Governance – particularly in relation to exploring alternative leadership models in relation to partnership working, collaborations and federations.
7. Following this meeting with the Director of Children's Services, 15 small school headteachers volunteered to join a working party to explore with officers their concerns. As a result, a series of small focus groups were chaired by these headteachers with relevant lead officers in the relevant services and a summary paper was presented to Schools Forum in February 2015, which is attached as **Appendix 2**.
8. Whilst the paper to the Schools Forum presents a summary of key issues raised by the focus groups, two particular issues were identified as key challenges: the funding formula for all schools and its impact on small schools in particular and, secondly, the pressing need for small schools to explore alternative leadership models other than the traditional, one school, one head teacher model.
9. In March 2015 and May 2015, two twilight workshops were arranged in partnership with the Southwell Diocese of the Church of England and the small schools working group, to reaffirm the commitment of the County Council to Nottinghamshire's small schools and also to invite chairs of governors in particular to engage with the pressing need to explore alternative leadership models in some small schools, particularly when a head teacher either retires or moves to another school. Case studies of successful school to school partnerships, collaborations and federations were presented by headteachers and chairs of governors.
10. Following these successful workshops, Local Authority officers from Governing Body Services (GBS), Education Improvement Service (EIS) and Human Resources (HR) have worked in partnership with governors and the Southwell Diocese to develop a Leadership and Governance toolkit, which has been widely used by headteachers and chairs of governors to develop alternative models of leadership and governance, particularly when headteachers resign or retire. As a result there are now 9 small schools working in formal collaborative partnerships, with 1 headteacher leading 2 or more schools. In addition, there are 2 small schools in a federation, 3 in a mixed collaboration (made up of 1 academy and 2 maintained schools) and 1 small school has recently joined a Multi-Academy Trust (MAT).
11. The small schools working group continues to evolve with new headteacher membership. The most recent planning group meeting in spring 2016 requested further work on financial modelling to inform future direction. The high cost of headteachers' salaries is a

particular challenge. Of the 60 schools with fewer than 150 pupils, 47 headteachers are paid above the Individual School Roll. This does not include schools where executive headteachers support more than one school. Whilst many governing bodies are aware of this, the challenge has been exacerbated by the recent increases to national insurance and pension contributions. At present, the small schools working party is being supported by Finance and HR officers to understand the size of collaborations and the staffing structures which would ensure financial sustainability of small schools serving their local communities, through effective use of resources.

12. The other current challenges include effective provision for pupils with special educational needs in times of financial constraint. Local Authority officers from the Support to Schools Service are supporting headteachers and chairs of governors to understand how Families of Schools can work effectively together to address these challenges.
13. The recent commitment by the then Prime Minister, David Cameron, in March 2016 confirming that no rural small school would be forced to become an academy or to join a multi-academy trust, ensures that Nottinghamshire small schools' governing bodies continue to determine their own governance arrangements in line with Nottinghamshire's Schools Policy, unless they are judged by Ofsted as requiring improvement or to require special measures. Small cohort size in small schools means that they are less likely to be judged as coasting or to be below the floor target set by the government. Nonetheless, small schools face ongoing challenges particularly around finances and recruitment of senior leaders.
14. Despite the challenges, Nottinghamshire small schools are led by committed leaders and governors, who continue to ensure that 88% of these schools were last judged as good or outstanding by Ofsted (as at 31st October 2016). Small schools fulfil a key role to ensure that the Council can fulfil its statutory duty to provide a school place for every child whose family wishes one. Having identified the particular challenges, Nottinghamshire's small schools are well placed to shape their own future through effective collaborative working, supported by Local Authority officers.
15. Headteachers and governors of small schools are anticipating that the consultation on changes to the schools funding formula will result in an increase to the per pupil funding for Nottinghamshire schools. They are hopeful that this will reduce the level of challenge in securing balanced budgets. The impact of changes is as yet unknown.

Other Options Considered

16. This report seeks to update Members on the key role that small schools play in Nottinghamshire to ensure that pupils living in rural areas, in particular, can access their local, small school. In more urbanised settings, the small school provides an alternative preference to parents who wish a smaller and nurturing environment for their child. As such, no other options were considered.

Reason/s for Recommendation/s

17. Within Nottinghamshire, small schools are highly valued and play a fundamental role in ensuring that every child has a school place. Effective small schools provide high quality personalised education, appropriate to the need of individual pupils.
18. Ensuring every child in Nottinghamshire is able to access a preferred school, near to their home, remains a key priority for the County Council. Completing statutory primary education ensures that each child has the necessary knowledge, skills and understanding to access the secondary curriculum and therefore to become a responsible citizen within society with the confidence and skills to secure economic independence.
19. The new schools funding formula may increase the amount of funding per pupil in Nottinghamshire. There is a need to determine whether this will be sufficient to alleviate the budget pressures currently faced by small schools in Nottinghamshire.

Statutory and Policy Implications

20. This report has been compiled after consideration of implications in respect of crime and disorder, finance, human resources, human rights, the NHS Constitution (Public Health only), the public sector equality duty, safeguarding of children and vulnerable adults, service users, sustainability and the environment and ways of working and where such implications are material they are described below. Appropriate consultation has been undertaken and advice sought on these issues as required.

RECOMMENDATION/S

That the Committee:

- 1) notes the progress of Nottinghamshire's small schools working group.
- 2) notes the achievement of and challenges faced by small schools in Nottinghamshire.
- 3) receives a further report when the impact of the new schools funding formula is known.

Marion Clay

Acting Service Director, Education Standards and Inclusion

For any enquiries about this report please contact:

Linda Foster
Acting Group Manager, Support to Schools Service
T: 0115 9772502
E: linda.foster@nottscc.gov.uk

Constitutional Comments (LM 21/12/16)

21. The recommendations in the report fall within the Terms of Reference of the Children and Young People's Committee.

Financial Comments (TMR 16/12/16)

22. There are no financial implications arising from this report.

Background Papers and Published Documents

Except for previously published documents, which will be available elsewhere, the documents listed here will be available for inspection in accordance with Section 100D of the Local Government Act 1972.

Nottinghamshire's small schools working group – report to Children and Young People's Committee on 15 June 2015.

Electoral Division(s) and Member(s) Affected

All.

C0917

Appendix 1

List of small schools

* Pupils on roll as at October 2016 and include those in nursery settings

Schools with fewer than 150 pupils on roll or with a net capacity fewer than 150 pupils:

| DfE | School Name | School District | Inf / Jnr | Faith | Pupils on roll |
|------|---|-----------------|-----------|----------|----------------|
| 3774 | All Saints CofE Infant School | Ashfield | Infant | CofE | 85 |
| 3031 | Selston CofE Infant and Nursery School | Ashfield | Infant | CofE | 98 |
| 2013 | Skegby Junior Academy | Ashfield | Junior | | 144 |
| 2450 | Westwood Infant and Nursery School | Ashfield | Infant | | 57 |
| 2679 | Beckingham Primary School | Bassetlaw | | | 92 |
| 3088 | Dunham CofE Primary School | Bassetlaw | | CofE | 92 |
| 2734 | East Markham Primary School | Bassetlaw | | | 117 |
| 2741 | Elkesley Primary and Nursery School | Bassetlaw | | | 83 |
| 2742 | Everton Primary School | Bassetlaw | | | 110 |
| 3546 | Gamston CofE Primary School | Bassetlaw | | CofE | 73 |
| 2614 | Haggonfields Primary and Nursery School | Bassetlaw | | | 99 |
| 2346 | Hallcroft Infant and Nursery School | Bassetlaw | Infant | | 116 |
| 3118 | Leverton Church of England Academy | Bassetlaw | | CofE | 104 |
| 2779 | Mattersey Primary School | Bassetlaw | | | 34 |
| 2781 | Misson Primary School | Bassetlaw | | | 92 |
| 3287 | North Wheatley CofE Primary School | Bassetlaw | | CofE | 95 |
| 3514 | Primary School of St Mary and St Martin Blyth | Bassetlaw | | CofE | 105 |
| 2813 | Rampton Primary School | Bassetlaw | | | 73 |
| 3061 | Ranby CofE Primary School | Bassetlaw | | CofE | 96 |
| 2876 | Ranskill Primary School | Bassetlaw | | | 118 |
| 3494 | St Luke's CofE Primary School | Bassetlaw | | CofE | 123 |
| 3117 | St Matthew's CofE Primary | Bassetlaw | | CofE | 40 |
| 3764 | St Patrick's Catholic Primary School (Harworth) | Bassetlaw | | Catholic | 104 |
| 3548 | St Peter's CofE Primary School (Gringley) | Bassetlaw | | CofE | 87 |
| 3390 | St Swithun's CofE Primary and Nursery School | Bassetlaw | | CofE | 122 |
| 3586 | Sturton CofE Primary School | Bassetlaw | | CofE | 89 |
| 3592 | Sutton-cum-Lound CofE Primary School | Bassetlaw | | CofE | 66 |
| 2844 | Walkeringham Primary School | Bassetlaw | | | 73 |
| 3021 | St John's CofE Primary (Stapleford) School | Broxtowe | | CofE | 101 |
| 3350 | Burntstump Seely CofE Primary Academy | Gedling | | CofE | 90 |
| 2775 | Lambley Primary School | Gedling | | | 127 |
| 3568 | Linby-cum-Papplewick CE Primary School | Gedling | | CofE | 119 |
| 2787 | Newstead Primary and Nursery School | Gedling | | | 134 |
| 2237 | Standhill Infant School | Gedling | Infant | | 135 |
| 2175 | Eastlands Junior School | Mansfield | Junior | | 140 |
| 2176 | Netherfield Infant School | Mansfield | Infant | | 132 |
| 3539 | All Saints Primary School | Newark | | CofE | 101 |

| | | | | | |
|------|--|------------|--------|------|-----|
| 3450 | Christ Church CofE Infant School | Newark | Infant | CofE | 48 |
| 3076 | Dean Hole CofE Primary School | Newark | | CofE | 60 |
| 3550 | Gunthorpe CofE Primary School | Newark | | CofE | 89 |
| 3104 | Halam CofE Primary School | Newark | | CofE | 116 |
| 3132 | Holy Trinity CofE Infant School | Newark | Infant | CofE | 56 |
| 2772 | Kirklington Primary School | Newark | | | 72 |
| 3112 | Kneesall CofE Primary School | Newark | | CofE | 106 |
| 2673 | Manners Sutton Primary School | Newark | | | 38 |
| 2793 | North Clifton Primary School | Newark | | | 41 |
| 3119 | Norwell CofE Primary School | Newark | | CofE | 55 |
| 2751 | Queen Eleanor Primary School | Newark | | | 56 |
| 3534 | St Marys CofE Primary School Edwinstowe | Newark | | CofE | 123 |
| 2829 | Sutton-on-Trent Primary School | Newark | | | 101 |
| 3145 | Walesby CofE Primary School | Newark | | CofE | 134 |
| 2853 | Winthorpe Primary School | Newark | | | 93 |
| 3511 | Archbishop Cranmer Church of England Academy | Rushcliffe | | CofE | 144 |
| 3072 | Bunny CofE Primary School | Rushcliffe | | CofE | 89 |
| 3084 | Costock CofE Primary School | Rushcliffe | | CofE | 79 |
| 3530 | Cotgrave CofE Primary School | Rushcliffe | | CofE | 108 |
| 2745 | Flintham Primary School | Rushcliffe | | | 102 |
| 2924 | Keyworth Primary School | Rushcliffe | | | 126 |
| 2769 | Kinoulton Primary School | Rushcliffe | | | 128 |
| 3113 | Langar CofE Primary School | Rushcliffe | | CofE | 98 |
| 2790 | Normanton-on-Soar Primary School | Rushcliffe | | | 69 |
| 2850 | Willoughby Primary School | Rushcliffe | | | 39 |

Small Schools

A representative group of small school headteachers met with Anthony May at their request to share their concerns about the significant issues facing small schools primarily as result of the changes to the funding arrangements for schools in April 2013. This meeting took place on 3rd December 2013, when the primary school headteachers from Walkeringham, Sturton Le Steeple, and Ranby Primary schools identified key issues facing small schools at this time. These primarily focussed on 3 key areas:

- Finance – particularly the impact of the changes to the lump sum allocation to all schools
- IT – particularly in relation to the ICT cost of broadband to small schools
- SEND – particularly in relation to the funding arrangements for pupils with SEND:
- Governance – particularly in relation to exploring alternative leadership models in relation to partnership working, collaborations and federations

Anthony May confirmed a commitment to small schools in Nottinghamshire, recognising the unique role these schools play, mainly in small rural communities. As a result, he agreed that a task and finish group would be established to consider the issues raised and to explore the possibility of developing shared solutions. The meeting recognised that a particular challenge was to ensure that this 'review' was owned and driven by small schools, in partnership with the County Council.

Small School Review

All small schools were invited to nominate in areas, representative small school headteachers to be part of the small school task and finish group to ensure that the needs and concerns of small school headteachers were the key drivers. Whilst it had been initially intended to limit the representatives to between 6-8, in the event, every small school headteacher who 'volunteered' was invited to the initial meeting. As a result of this invitation, the following headteachers volunteered to be part of the review:

- Paul Higginbottom – Everton Primary
- Jane Mellor – Costock C of E Primary
- Mark Elliott – Sturton-Le-Steeple C of E primary
- Adrienne Alcock – Walkeringham Primary
- Joanna Hall – North Wheatley C of E Primary
- Nadine Lacey – Sutton-cum-Lound C of E (VA) Primary
- Helen Woodward – Newstead Primary
- Tracey Burn-Smith – Kirklington Primary
- Alan Guilder – Willoughby Primary
- Claire McKinder – Ranby C of E (VC) Primary
- Sharon Patton – Mattersey Primary

- Kathryn Thompson – Southwell Holy Trinity C of E (V?)Primary
- Andy Pullin – St Peter's C of E (V?) Gringley on the hill
- Samantha Bradbury – Halam Primary
- Elizabeth Moore – Beckingham Primary

Representatives from the Church of England and RC Dioceses were also informed of the review and invited to participate.

Key NCC officers who supported the group included:

- Emma McGeown – HR
- Andy Wilson – HR
- Leonie Meikle – Governing Body Services
- Jane Mansell – Governing Body Services
- Adam Crevald – ICT
- Steve Dennis – ICT
- Charles Savage – SEND Policy and Provision
- Pat Somerset – Education Improvement Service
- Katie Adamson – Finance
- Jayne Littlewood – Place Planning and Admissions (review coordinator)
- Marion Clay – Group Manager Support to Schools

Following an initial scoping meeting on 27th February 2014, a series of focus groups met with relevant officers during March and April 2014 to explore in depth, the issues and concerns shared initially with Anthony May and subsequently expanded by the small school headteacher representative group at the February meeting. (Minutes of the focus group meetings are attached as appendices)

A feedback and reflection day took place on the 1st May 2014. This was attended by small schools and officers. to share and reflect on the information that had been discussed during the March/April focus group meetings. This day also offered the opportunity for the small school headteachers to prioritise those issues that were felt to pose the greatest challenge to small schools at this time.

Summary of Discussions of 1st May 2014

Leadership, Governance and HR

Key issues raised by the Leadership, Governance and HR focus groups were around:

- Financial implications and cost effectiveness of Executive headship role across small schools
- Strategies to prepare aspirant leaders/ support existing Executive headteachers in small schools
- Models of governance models to facilitate formal partnerships across small schools (federation, collaboration, amalgamation)
- Governing Bodies knowledge and understanding of the current challenges and opportunities available to deliver good and outstanding education

Small schools headteachers are increasingly aware of the challenges of the current traditional leadership model of one headteacher in one small school. Their greatest concern is that, whilst they recognise the need for consideration of new governance arrangements as opportunities, some governing bodies perceived this as a threat to the existence of the small, village school.

Outstanding challenges faced by small schools in this area were identified and included:

- The understanding of some headteachers and staff that new ways of working in partnership and collaboration can be advantageous to the continued delivery of high quality education in a small community.
- The understanding of Governors that new leadership models can provide significant opportunities to enrich curricular provision and secure a sustainable future
- The need for a clear and unambiguous vision for small schools in Nottinghamshire provided at County Council level developed in partnership with small school communities.

Admissions and Place Planning (including Early Years Place Planning)

Key issues raised by the PPA focus group were around

- Concerns by small schools in relation to their medium and long term viability
- Place Planning data, its interpretation and use.
- The need to clarify current funding streams to determine the sufficiency of school places as well as early years provision.

The geographical location of most small schools ensures that families living in villages can access a local school. In addition, it provides families, primarily living on the outskirts of larger conurbations, the opportunities to access a small school in preference to their larger catchment school. Almost all of the small schools have surplus places which contribute to the financial and educational provisional challenges. However, these small schools provide essential places, not only to catchment families but increasingly to out of catchment families, who are expressing a preference for a smaller setting. The increase in population across the county, as well as the expansion of rural housing developments, mean that small primary schools will continue to be an key part of the County Council's strategic place planning for statutory school and early years into the foreseeable future and beyond.

Outstanding challenges faced by small schools

- The need to develop the understanding of small school heads and governors of place planning data and projections.
- The need to address in the first instance, the impact of surplus places within their school.
- To consider the medium and long term implications on budget and quality of provision if there continues to be a challenge to balance the budget.

SEND

Key issues raised by the SEND focus groups were around:

- A perception that small schools have a disproportionate high number of SEND pupils in the context of national and local guidance that the school must evidence the spending of £6K before seeking additional family funding.
- The role of the SENCO and whether there was a possibility of a shared SENCO role across a group of small schools
- The use of AFN/HLN moneys and the possibility of family money to be used more flexibly in

This was a contentious area for the SEND focus group. This was driven by their view a small number can impact negatively on provision and resourcing within small cohorts and across the school. There was recognition that in particular, if SENCOs could be shared across schools, economies of scale could be achieved. It was the view that parents with needy children, unable to access special school provision were looking to small schools to provide tailored and personalised provision. Whilst skilled at meeting the needs of small and diverse cohorts, it is a challenge to provide adequately when faced with a small number of SEND admissions.

Outstanding challenges faced by small schools are:

- The diseconomies of scale faced by small schools who are expected to allocate £6K of funding to the provision of pupils with high needs, prior to any request being made for AFN or HLN funding
- The staffing implications particularly in regards to capacity, cover and employing high quality support staff for longer than 2 years
- How long it sometimes takes for a school to access additional funding (AFN/HLN), the consequence in some cases of having to take resources away from other children in order to cater for new children with complex needs.

Finance

Key issues raised by the finance focus group were around:

- The lump sum allocation to all schools being the same as for small schools
- The implications on setting deficit budget as a strategic tool to support small school sustainability in relation to staffing and provision
- The DSG guidance to distribute funds on the basis of the October headcount

It was the view of the small school headteachers that they have not benefited sufficiently from other funding streams such as Pupil Premium, SEND Allocations and AWPU. As a result, their dependence on the lump allocation was higher than that of a larger primary or secondary school. In addition, there was a particular challenge as economies of scale could not easily be achieved within a small school setting. In addition, the impact of this limited budget militates against the negotiations of a deficit budget as their yearly budgets are entirely spent on the current staffing and provision within the school. The particular challenge around the once yearly headcount directing budget decisions cannot be addressed through a local solution as the current arrangements comply with national prescribed guidance.

Outstanding challenges faced by small school include

- Supply cover for teaching headteachers in small schools
- Pupils with additional needs including Pupil Premium and SEND

- In year fluctuation in numbers e.g. movement of a sibling group of 3 cannot easily be absorbed by a small school

ICT Provision

Key issues raised by the ICT focus group were around:

- The cost of broadband and the costing mechanisms by NCC sold service which has resulted in schools essentially paying the same almost regardless of size (£6K or £12K)
- The investigation by schools about the need to find more cost effective providers has been complicated by the existing partnership arrangements between NCC and BT
- Operational concerns around speed, high volume of signal failures resulting in no broadband provision for periods of time
- Inability of the service desk to provide tailored support to small schools seeking support

It was the view of the ICT focus group that the current delivery of broadband was neither cost effective nor reliable. The geographical remoteness of small schools has added a greater level of complexity to providing broadband connectivity which has been compounded by a perception that the NCC service desk has been unable to respond in a timely manner to problems and questions as they arise. The overriding issue has been a sense of injustice that the costing mechanism has not acknowledged the particular challenges of a small school budget.

Emerging Conclusion

Within Nottinghamshire, small schools are highly valued and play a fundamental role in ensuring that every child has a school place. Effective small schools provide high quality personalised education, appropriate to the need of individual pupils.

Small school headteachers have accurately identified key challenges at this time. Finance, creates the most significant challenge because it impacts on the ability to:

- recruit high quality leaders and teachers.
- sustain effective provision for particularly vulnerable pupils,
- provide choice and flexibility in relation to curricular provision.

In addition small school headteachers have begun to recognise the impact of surplus places within their schools and the importance of place planning projection data which could support them to engage with the current challenges as well as informing leadership options that could secure a successful future for small school communities.

Out of these adverse challenges a unique opportunity is offered for governing bodies to think beyond 'traditional' school models to future proof educational provision in localities that are fit for purpose in the 21st Century. In order to achieve this, brave leadership will be necessary at all levels from elected members, strategic leadership and governing bodies along with a clear vision that can inform both policy and practice.

Key next step

This paper is an adaptation of the summary paper sent to all small school headteachers who participated in the task and finish groups. A key action agreed is the need to ensure that Chairs

of Governors share the understanding of their headteachers in relation to sustaining vibrant and successful small schools into the future. As a result 2 small schools workshops are being led by small school headteachers on the 25 March 2015 and 5 May 2015. Officers will provide support to the small school headteachers during these workshops. Headteachers and Chairs of Governors in schools with less than 105 pupils on roll will be initially invited. If places are available, interested others in schools of 150-200, will be welcome.

RECOMMENDATION/S

That the Schools Forum:

- Note the contents of this report

For any enquiries about this report please contact:

Marion Clay – Group Manager, Support to Schools Service – Children, Families and Cultural Services

T: 0115 977 3736

E: marion.clay@nottsccl.gov.uk

16 January 2017**Agenda Item: 07****REPORT OF THE ACTING SERVICE DIRECTOR, EDUCATION STANDARDS
AND INCLUSION****DELETION OF TWO POSTS FROM THE EDUCATION STANDARDS AND
INCLUSION DIVISION TO SECURE DEPARTMENTAL SAVINGS****Purpose of the Report**

1. This reports seeks approval to delete the following two posts, which are currently vacant, from the Education Standards and Inclusion (ESI) division to secure financial savings of £132,999:
 - 1 full-time equivalent (FTE) Adviser (Soulbury 17-20 plus 3 Structured Professional Assessment points)
 - 1 FTE Consultant (Soulbury 9-12 plus 3 Structured Professional Assessment points).

Information and Advice

2. In a context of ongoing financial pressures within ESI, which is facing a budget pressure of £2.4M in the current financial year, predominately relating to Special Education Home to School Transport, it has been necessary to review all current spend and staffing structures to identify Council savings. The immediate area in which savings can be secured is in relation to two posts within the Education Improvement Service which are currently vacant.
3. The total cost of the staffing structure for ESI is £8.004M. However, most of this structure in 2016-2017 is funded by the schools budget (£5.76M) and increasingly from sold service income (£0.984M). The Council contributes only £1.137M to the cost of the overall staffing structure from its core budget. Therefore the opportunity to identify savings to the Council's budget is limited.
4. The Education Improvement Service is currently transitioning to a more commercial basis as the funding from central grants such as the Education Services Grant end. Following the agreement of the Policy Committee in November 2016 to develop a Commercial Development Unit (CDU) with effect from April 2017, ESI has been identified as one of the three service areas to be part of this commercial unit. Therefore, the reduction of these two posts will be mitigated by the new ways of working that will emerge further from April 2017.

5. It is therefore the view of the service that support and challenge for maintained schools will continue from April 2017, despite the deletion of 1 FTE Adviser post and 1 FTE Consultant post (see **Appendix 1**).
6. The division as a whole will be subject to departmental review as part of the corporate commitment of securing wider savings. However, in order to contribute £100,000 to the wider savings target by April 2017, it is necessary to delete these two vacant posts from April 2017.
7. Appropriate consultation has taken place.

Other Options Considered

8. Consideration has not been given to developing alternative options. This is because the Education Improvement Service is part of the first services to join the Commercial Development Unit from April 2017. In addition, as almost all of this service is funded by revenue other than Council revenue, the opportunity to secure savings is limited.

Reason/s for Recommendation/s

9. As a result of ongoing financial pressures and the overspend of the Special Education Home to School Transport budget, it is necessary to secure Council savings immediately.

Statutory and Policy Implications

10. This report has been compiled after consideration of implications in respect of crime and disorder, finance, human resources, human rights, the NHS Constitution (public health services), the public sector equality duty, safeguarding of children and adults at risk, service users, sustainability and the environment and ways of working and where such implications are material they are described below. Appropriate consultation has been undertaken and advice sought on these issues as required.

Financial Implications

11. The deletion of the two vacant posts will reduce the budget required by the Education Standards and Inclusion division by £132,999.

RECOMMENDATION/S

- 1) That the following two posts, which are currently vacant, are deleted from the Education Standards and Inclusion division to secure financial savings of £132,999 with effect from 1 April 2017:
 - 1 full-time equivalent (FTE) Adviser (Soulbury 17-20 plus 3 Structured Professional Assessment points)
 - 1 FTE Consultant. (Soulbury 9-12 plus 3 Structured Professional Assessment points).

Marion Clay
Acting Service Director, Education Standards and Inclusion

For any enquiries about this report please contact:

Linda Foster
Acting Group Manager, Support to Schools Service
T: 0115 9772502
E: linda.foster@nottsc.gov.uk

Constitutional Comments (LM 22/12/16)

12. The recommendations in the report fall within the Terms of Reference of the Children and Young People's Committee.

Financial Comments (SH 23/12/16)

13. The financial implications of the report are set out in paragraph 11 above.

Background Papers and Published Documents

Except for previously published documents, which will be available elsewhere, the documents listed here will be available for inspection in accordance with Section 100D of the Local Government Act 1972.

Commercial Development unit – report to Policy Committee on 16 November 2016.

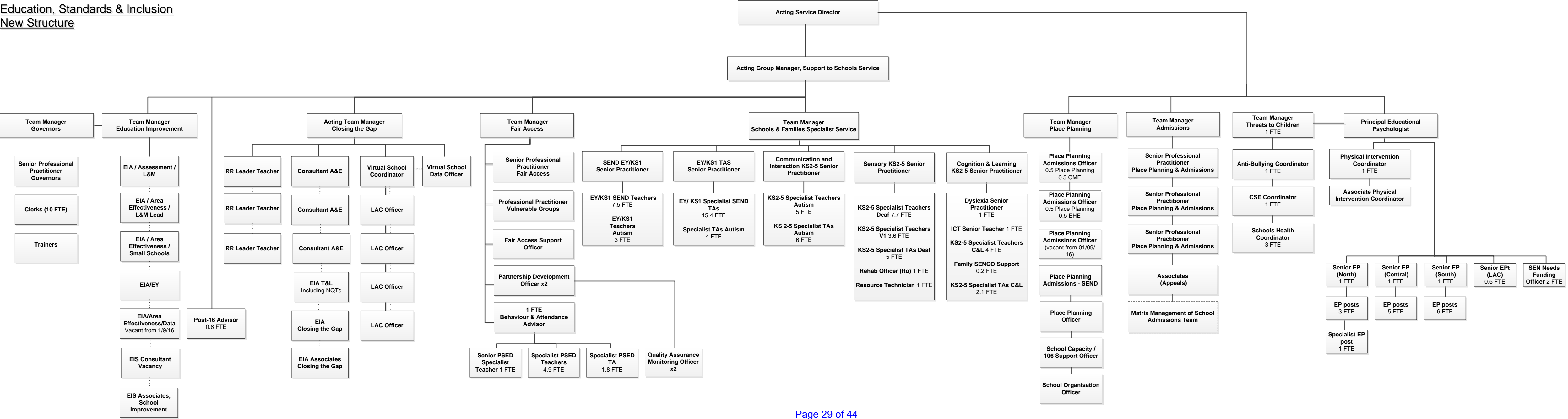
<http://ws43-0029.nottsc.gov.uk/dmsadmin/Meetings/tabid/70/ctl/ViewMeetingPublic/mid/397/Meeting/3747/Committee/475/Default.aspx>

Electoral Division(s) and Member(s) Affected

All.

C0925

Education, Standards & Inclusion
New Structure



16 January 2017

Agenda Item: 08

REPORT OF THE SERVICE DIRECTOR, CHILDREN'S SOCIAL CARE**ROTA VISITS TO CHILDREN'S HOMES: AUTUMN 2016****Purpose of the Report**

1. To inform the Committee of the outcome of six-monthly rota visits to Nottinghamshire County Council's children's homes that took place in Autumn 2016. Recommendations are made by Councillors when they visit and officers act on any recommendations that are made.

Information and Advice

2. **Lyndene** – Councillor John Allin visited Lyndene on 13th October and a report is awaited.
3. **Caudwell House** was visited on 28th September by Councillor Boyd Elliott, who noted that every opportunity is given for each child to maximise their experiences under the care of the home. During the visit Councillor Elliott noted that the home was clean, and welcoming. There was one recommendation made relating to the costs of the night time monitoring system required, and this has now been progressed.
4. **Minster View** was visited by Councillor Boyd Elliott on 28th September. He noted that each child has an independent care plan, with procedures in place to ensure each young person is safe and supported. He noted that carers form extremely positive relationships with the young people, and that the home's recent Ofsted grading as Outstanding should be welcomed. There was one recommendation relating to the concerns about referrals to Minster View being limited. This is being addressed by Vonny Senogles Children's Service Manager, with the Manager of the home and the Service Manager for the Children's Disability Service.
5. **Oakhurst** – Councillor Colleen Harwood has been unable to visit Oakhurst for this period.
6. **West View** was visited on 10th October by Councillor Philip Owen who noted the downstairs areas look inviting and in good order, with the new furnishings chosen by the young people complementing the overall décor. During the visit Councillor Owen was able to talk to the Child and Adolescent Mental Health Services (CAMHS) worker who was in the home at the time of his visit. There was one recommendation made to review the emergency admission procedures, which related to the home being instructed to take an emergency placement over and above the home's registration. This review of procedures has now taken place.

7. **The Big House** was visited by Councillor Jacky Williams on 26th October. Councillor Williams reported that the home remains very warm and inviting, with robust care plans in place for each young person. Councillor Williams recorded that the learning from a significant incident where several members of staff had been injured due to one young person's behaviours, has informed behaviour management plans and health and safety procedures. Councillor Williams made one recommendation of sharing Regulation 44 reports between rota visits, and this has been actioned.
8. **Clayfields House** was visited on 16th November by Councillor Jacky Williams, who recorded the progress status of the plans for the rebuilding of one of the units, and the progress made with updating local residents on the work, and ensuring deliveries, where possible, are made before 8am to avoid local disruption. Councillor Williams recorded recognition that the vast majority of the residents in the home have multiple mental ill health issues, which are being addressed by the CAMHS team, complemented by a well trained staff team. Following the admission of a deaf young person to Clayfields House, Councillor Williams recorded that ensuring he has signing support should be a priority, and this is being addressed.

Other Options Considered

9. As this is a report for noting, it is not necessary to consider other options.

Reason/s for Recommendation/s

10. The report is for noting only.

Statutory and Policy Implications

11. This report has been compiled after consideration of implications in respect of crime and disorder, finance, human resources, human rights, the NHS Constitution (Public Health only), the public sector equality duty, safeguarding of children and vulnerable adults, service users, sustainability and the environment and ways of working and where such implications are material they are described below. Appropriate consultation has been undertaken and advice sought on these issues as required.

RECOMMENDATION/S

- 1) That the outcome of the six-monthly rota visits to Nottinghamshire County Council's children's homes that took place in Autumn 2016 be noted.

Steve Edwards
Service Director, Children's Social Care

For any enquiries about this report please contact:

Shelagh Mitchell
Group Manager, Access to Resources
T: 0115 9774153
E: Shelagh.mitchell@nottsccl.gov.uk

Constitutional Comments

12. As this report is for noting only, no Constitutional Comments are required.

Financial Comments (TMR 06/12/16)

13. There are no financial implications arising from this report.

Background Papers and Published Documents

None.

Electoral Division(s) and Member(s) Affected

All.

C0916

16 January 2017**Agenda Item: 09****REPORT OF THE CORPORATE DIRECTOR OF CHILDREN, FAMILIES AND
CULTURAL SERVICES****NATIONAL CHILDREN AND ADULT SERVICES CONFERENCE 2016:
2 – 4 NOVEMBER 2016****Purpose of the Report**

1. To report back on Member and officer attendance at the National Children and Adult Services Conference, which took place in Manchester between 2nd and 4th November 2016.

Information and Advice**Background**

2. The County Council's representatives were Councillor John Peck, Chair of the Children and Young People's Committee; Councillor Muriel Weisz, Chair of the Adult Social Care and Health Committee; Colin Pettigrew, Corporate Director of Children, Families and Cultural Services; David Pearson, Corporate Director of Adult Social Care, Health and Public Protection; and Paul McKay, Service Director, Adult Social Care, Health and Public Protection.
3. The report is supported by reference to the speeches and presentations which are on the conference website, hosted by the Local Government Association (LGA).

Purpose/Aim of the Event

4. The National Children and Adult Services Conference is the major annual national conference for adults' and children's services. Organised by the Association of Directors of Social Services (ADASS), the Local Government Association (LGA) and the Association of Directors of Children's Services (ADCS), the National Children and Adult Services Conference considers issues in relation to social care, children's services, education, health and related fields.
5. The Conference is designed to provide an opportunity to further understand and get up-to-date information on proposals to deal with issues in adults' and children's services.
6. The programme included a mix of keynote and ministerial addresses, including government ministers, opposition spokespeople, the Schools Commissioner, Ofsted,

Care Quality Commission (CQC), NHS England and the Greater Manchester Health and Social Care Partnership. Major topics covered included: workforce issues, the educational progress of looked after children and a sub-plenary topic on supporting unaccompanied children.

Summary

7. The Conference opened on Wednesday 2nd November with speeches from ADCS president, Dave Hill; ADASS immediate past president, Ray James; and LGA Vice Chairman, Councillor Nick Forbes.
8. In his speech, Dave Hill touched on some of the challenges facing councils, including rising demand for children's social care and creating the conditions where successful social work can thrive with limited resources. The golden thread throughout his speech was the importance of meaningful, lasting relationships in improving outcomes for children, young people and their families.
9. Other themes included: doing better for children in care and care leavers, the importance of early help and prevention, and partnership working. He also praised local authorities for their commendable efforts in helping to support hundreds of unaccompanied children following the closure of the Calais camp.
10. On Wednesday afternoon, ISOS Partnership shared emerging findings from a new study they are undertaking on behalf of the LGA on models of support and intervention in children's services. Other topics included transition planning and how best to prepare children and young people with Special Educational Needs and Disability (SEND) for adulthood; a session on grooming, controlling and coercive behaviour chaired by BBC Radio 4's Jane Garvey; and improving the mental health and wellbeing of children in care, care leavers and adopted children.
11. On Thursday, Debbie Barnes, chair of the Association's Educational Achievement Policy Committee, led a discussion on the development of a new data tool to measure the progress and attainment of children in care.
12. Later that day, the Secretary of State for Education, Justine Greening, and the Minister of State for Vulnerable Children and Families, Edward Timpson, addressed the conference. In her speech, Justine Greening highlighted the importance of stability in promoting children's longer-term outcomes and the crucial role of social workers in supporting vulnerable children and families. She announced eleven new teaching partnerships and the publication of the first evaluation reports from some of the innovation fund programmes. This was followed by a closed session on unaccompanied asylum seeking and refugee children.
13. The day ended with a series of evening fringe meetings.
14. A variety of sessions ran throughout the Friday morning, including Education Question Time, which looked at the ever-changing education system and delegates discussed the future role for councils in education. We also heard from the National Schools Commissioner, Sir David Carter, and there was an interesting session on innovation in children's social care, which highlighted creative practices being used

by local authorities in order to improve outcomes for children and young people. A session with Ofsted on what will replace the Single Inspection Framework brought the conference to a close.

15. Speeches and presentations from the event can be found on the conference website:

www.adass.org.uk/ncasc2016

Other Options Considered

16. The report is for noting only.

Reason/s for Recommendation/s

17. The report is for noting only.

Statutory and Policy Implications

18. This report has been compiled after consideration of implications in respect of crime and disorder, finance, human resources, human rights, the NHS Constitution (Public Health only), the public sector equality duty, safeguarding of children and vulnerable adults, service users, sustainability and the environment and ways of working and where such implications are material they are described below. Appropriate consultation has been undertaken and advice sought on these issues as required.

RECOMMENDATION/S

- 1) That the report on Member and officer attendance at the National Children and Adult Services Conference, which took place in Manchester between 2nd and 4th November 2016, be noted.

Colin Pettigrew

Corporate Director, Children, Families and Cultural Services

For any enquiries about this report please contact:

Natasha Wrzesinski
Senior Practitioner, Quality & Improvement Group
T: 0115 9934648
E: natasha.wrzesinski@nottsccl.gov.uk

Constitutional Comments

19. As this report is for noting only, no Constitutional Comments are required.

Financial Comments (TMR 06/12/16)

20. There are no financial implications arising from this report.

Background Papers and Published Documents

Except for previously published documents, which will be available elsewhere, the documents listed here will be available for inspection in accordance with Section 100D of the Local Government Act 1972.

National Children and Adult Services Conference 2016 – report to Children and Young People’s Committee on 21 March 2016.

Electoral Division(s) and Member(s) Affected

All.

C0915

16 January 2017**Agenda Item: 10**

REPORT OF CORPORATE DIRECTOR, RESOURCES

WORK PROGRAMME

Purpose of the Report

1. To consider the Committee's work programme for 2016-17.

Information and Advice

2. The County Council requires each committee to maintain a work programme. The work programme will assist the management of the committee's agenda, the scheduling of the committee's business and forward planning. The work programme will be updated and reviewed at each pre-agenda meeting and committee meeting. Any member of the committee is able to suggest items for possible inclusion.
3. The attached work programme has been drafted in consultation with the Chairman and Vice-Chairman, and includes items which can be anticipated at the present time. Other items will be added to the programme as they are identified.
4. As part of the transparency introduced by the new committee arrangements, committees are expected to review day to day operational decisions made by officers using their delegated powers. It is anticipated that the committee will wish to commission periodic reports on such decisions. The committee is therefore requested to identify activities on which it would like to receive reports for inclusion in the work programme. It may be that the presentations about activities in the committee's remit will help to inform this.

Other Options Considered

4. None.

Reason for Recommendation

5. To assist the committee in preparing its work programme.

Statutory and Policy Implications

6. This report has been compiled after consideration of implications in respect of finance, equal opportunities, human resources, crime and disorder, human rights, the safeguarding of children, sustainability and the environment and those using the service and where such implications are material they are described below. Appropriate consultation has been undertaken and advice sought on these issues as required.

RECOMMENDATION

That the committee's work programme be noted and consideration be given to any changes which the committee wishes to make

Jayne Francis-Ward
Corporate Director, Resources

For any enquiries about this report please contact:

Alison Fawley
Democratic Services Officer
T: 0115 993 2534
E: alison.fawley@nottsc.gov.uk

Constitutional Comments (HD)

7. The Committee has authority to consider the matters set out in this report by virtue of its terms of reference.

Financial Comments (NS)

8. There are no direct financial implications arising from the contents of this report. Any future reports to Committee on operational activities and officer working groups, will contain relevant financial information and comments.

Background Papers

None

Electoral Division(s) and Member(s) Affected

All.

CHILDREN & YOUNG PEOPLE'S COMMITTEE - WORK PROGRAMME 2016-17

| REPORT TITLE | BRIEF SUMMARY OF AGENDA ITEM | LEAD OFFICER | REPORT AUTHOR |
|---|------------------------------|---------------|-------------------------------|
| 20 February 2017 | | | |
| Nottinghamshire School Admission Arrangements 2018/19 | | Marion Clay | Mary Kiely |
| Performance reporting (Quarter 3 2016/17) – Services for Children and Young People | Quarterly performance report | Celia Morris | Matt Garrard |
| School Capital Programme progress report | Six month update report | Jas Hundal | Sara Williams |
| Review of the Schools Swimming Service offer | | Derek Highton | Chris Warren |
| Youth Service update | | Derek Highton | Chris Warren/ Pom Bhogal |
| Changes to the licensing arrangements of the Duke of Edinburgh Award for Nottinghamshire schools | | Derek Highton | Chris Warren |
| Outcome of Ofsted inspections of Home Care service and Play for Disabled Children | | Derek Highton | Louise Benson/ Jill Norman |
| SEND Implementation Grant & High Needs Strategic Planning Fund | | Derek Highton | Jill Norman |
| Developing Family Resilience | | Derek Highton | Laurence Jones |
| Children, Young People and Families Plan 2016-18 – six-month update | Six monthly update report | Derek Highton | Chris Jones |
| Troubled Families Programme in Nottinghamshire – six-month update | Six monthly update report | Derek Highton | Laurence Jones |
| Children & Young People's Mental Health & Wellbeing Transformation Plan | Six-monthly report | Kate Allen | Kate Allen/ Lucy Peel |
| Disestablishment of posts in the Integrated Children's Disability Service | For decision | Marion Clay | Louise Benson |
| Proposal to revise the staffing structure of the Sensory Team within Schools and Families Specialist Services | For decision | Marion Clay | Linda Foster |
| 20 March 2017 | | | |
| Performance figures for Nottinghamshire schools and academies – academic year 2015/16 | For information | Marion Clay | Marion Clay |

| REPORT TITLE | BRIEF SUMMARY OF AGENDA ITEM | LEAD OFFICER | REPORT AUTHOR |
|--|------------------------------|---------------|-------------------------------|
| Key Stage 2 performance – analysis and actions | For information | Marion Clay | Marion Clay |
| National Minimum Fostering Allowances and Fees for Foster Carers and new carer payment model | Annual determination | Steve Edwards | Naomi Sills/ Tara Pasque |
| Changes to special school nursing provision – update | | Kate Allen | Catherine O’Byrne |
| National Children and Adult Services Conference 2017 | For decision | Derek Higton | Philippa Milbourne |
| Local Authority governor appointments and re-appointments to school governing bodies | For information | Marion Clay | Jane Mansell |
| Schools Forum and Education Trust Board officer group report | Annual officer group report | Marion Clay | Marion Clay |
| 24 April 2017 | | | |
| Exceptional payments for school clothing and footwear 2017/18 | Annual determination | Marion Clay | Marion Clay/ Linda Foster |
| School Capital Programme progress report | Six month update report | Jas Hundal | Sara Williams |
| Children’s Workforce Health Check Survey 2016-17 | | Derek Higton | Liz Maslen |
| 19 June 2017 | | | |
| Performance reporting (Quarter 4 2016/17) – Services for Children and Young People | Annual performance report | Celia Morris | Matt Garrard |
| Home to school and Post 16 transport policies 2018-19 | | Marion Clay | Dave Litchfield |
| Financial support for students in post-16 education | Annual determination | Marion Clay | Linda Foster |
| Children & Young People’s Mental Health & Wellbeing Transformation Plan | Six-monthly report | Kate Allen | Kate Allen/ Lucy Peel |
| A Strategy for Closing the Educational Gaps in Nottinghamshire | Six monthly review report | Marion Clay | Marion Clay/ Janeen Parker |
| Looked After Children and Care Leavers Strategy 2015-18 – annual progress report | Annual report | Steve Edwards | Amanda Collinson |
| Principal Child and Family Social Worker - annual report 2016 | | Steve Edwards | Diana Bentley |

| REPORT TITLE | BRIEF SUMMARY OF AGENDA ITEM | LEAD OFFICER | REPORT AUTHOR |
|--|------------------------------|---------------|--------------------------------|
| Children, Young People and Families Plan 2016-18 – six-month update | Six monthly update report | Derek Higton | Chris Jones |
| Troubled Families Programme in Nottinghamshire – six-month update | Six monthly update report | Derek Higton | Laurence Jones |
| Child Sexual Exploitation and Children Missing from Home and Care: update | Six-monthly update | Steve Edwards | Pam Rosseter/ Terri Johnson |
| Local Authority governor appointments and re-appointments to school governing bodies | For information | Marion Clay | Jane Mansell |
| 17 July 2017 | | | |
| Rota visits to children's homes – Spring 2017 | Six monthly report | Steve Edwards | Vonny Senogles |
| Nottinghamshire Childcare Sufficiency Assessment 2017 | | Derek Higton | Laurence Jones |
| Nottinghamshire Early Years Improvement Plan 2015-17 – annual update | | Derek Higton | Irene Kakoullis |
| Members' visit to Outdoor & Environmental Education residential centres | For decision | Derek Higton | Phil Baker |
| To be placed | | | |
| Short Breaks offer – outcome of review | | Derek Higton | Jill Norman |

