

Delivering a 'whole system' Child and Adolescent Mental Health Service [CAMHS]

Sally Handley
Nottinghamshire County
January 2009

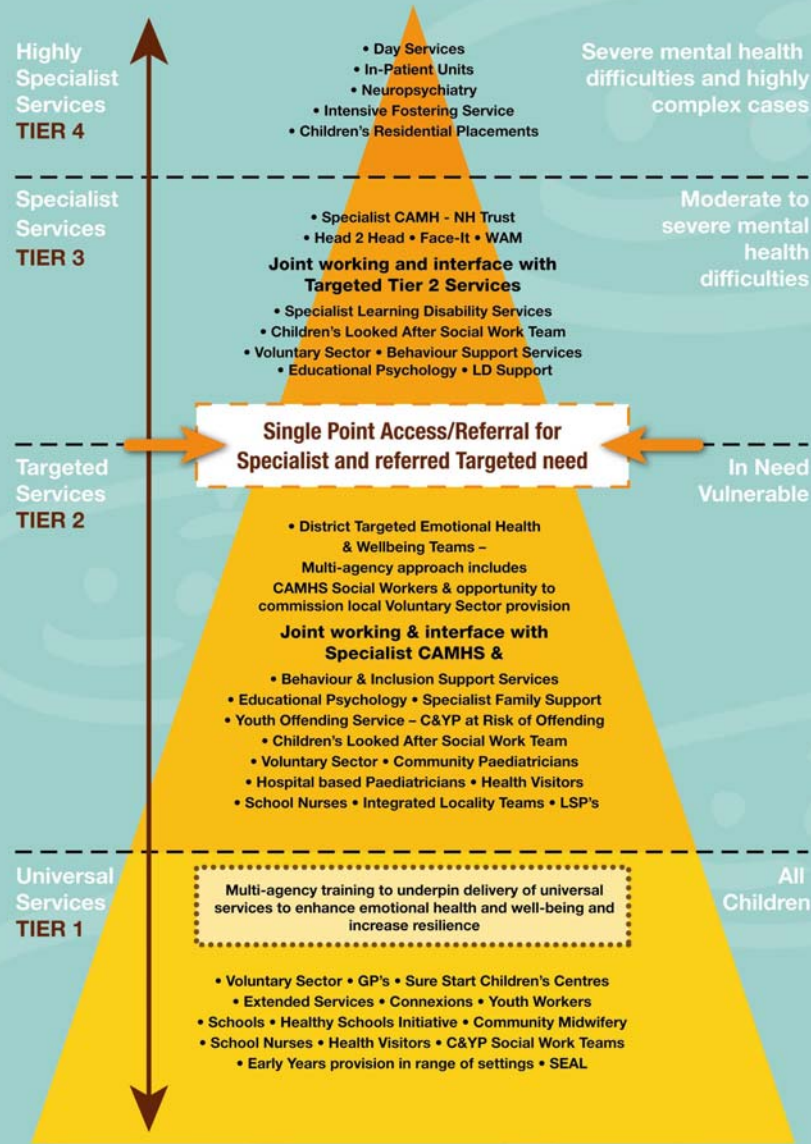


CAMHS is everyone's
business...



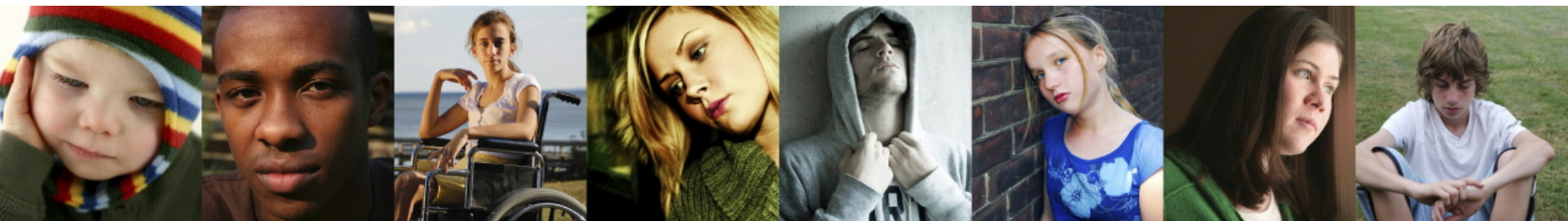


Comprehensive Child and Adolescent Mental Health Service In Nottinghamshire

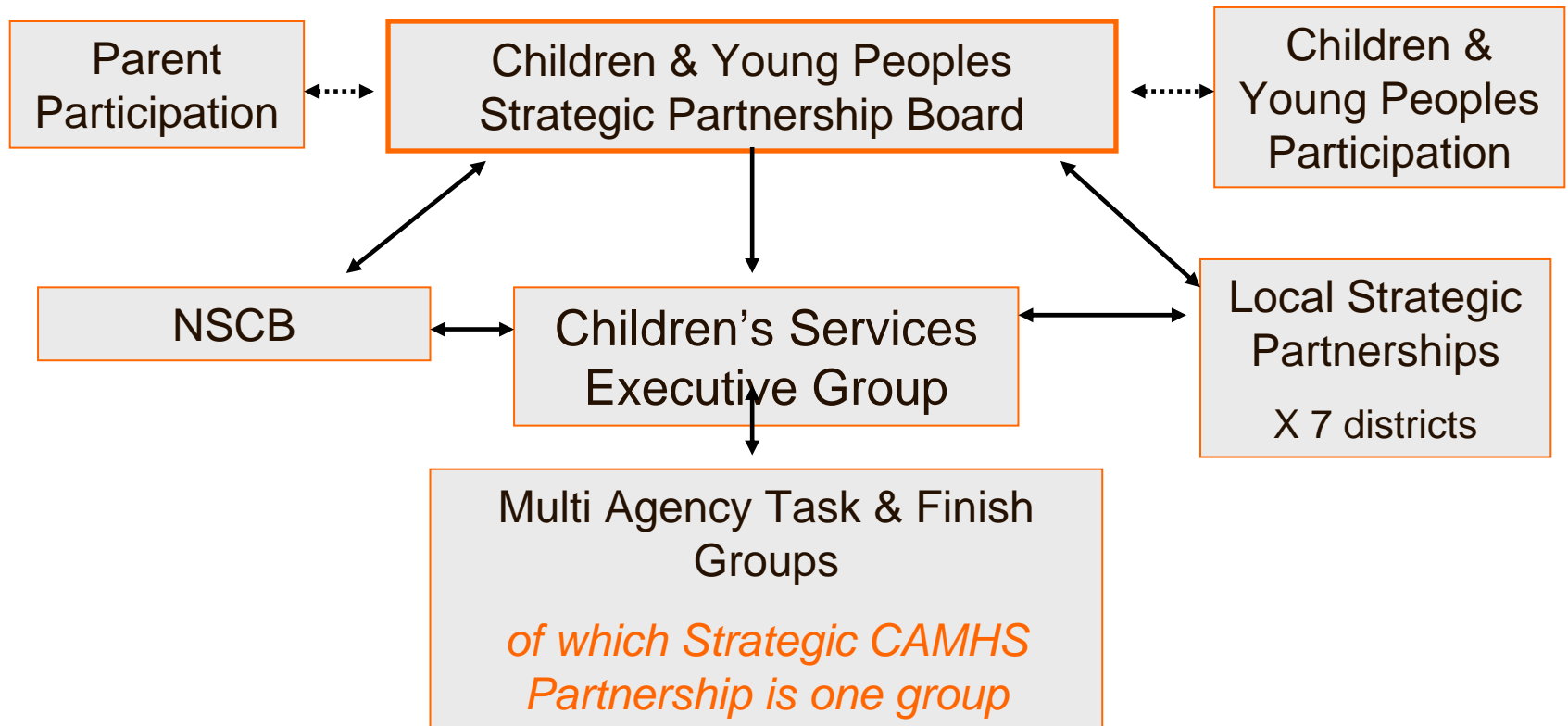


Working in partnership with children, young people and their parents/carers.

Nottinghamshire CAMHS Partnership



Children & Young Peoples Strategic Partnership



Nottinghamshire CAMHS Partnership decision making structure

Children's Services Executive Group



Nottinghamshire County Strategic
CAMHS Partnership



NI 50 Emotional Health
Reference Group

**Nottingham
City CAMHS
Partnership**

‘Whole system’ CAMHS-
embracing an *‘integrated
delivery philosophy...’*



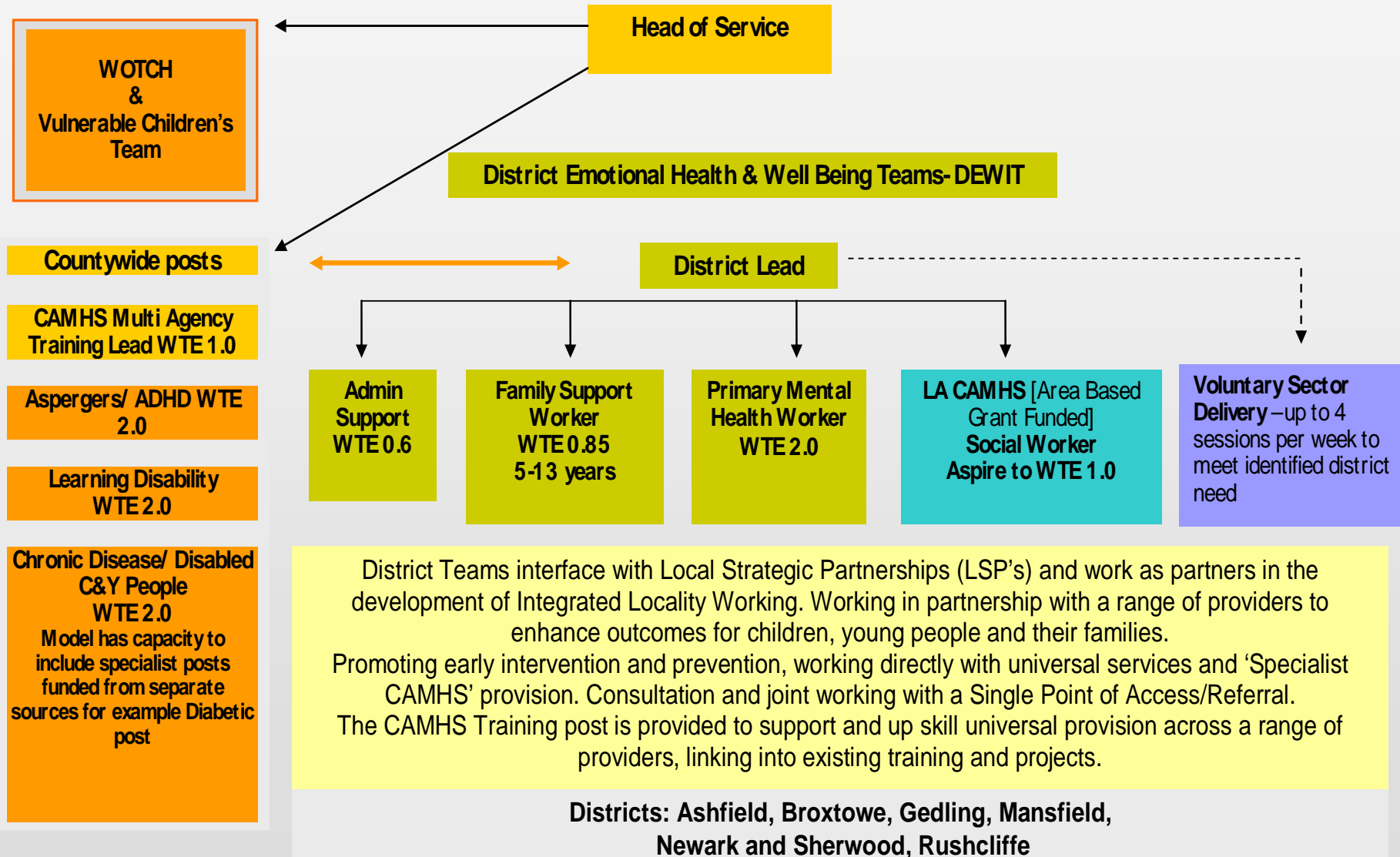
Recent service investment and development...



Targeted [Tier 2] -significant service investment ...this includes commissioning needs led provision from the Voluntary sector

Enabling the remodelling of Specialist CAMHS [Tier 3]

Targeted Emotional Health and Well Being Service 04/08



Integrated, joint working with Targeted [Tier 2] providers

Specialist Child and Adolescent Mental Health Tier 3

Specialist Services are managed in three overarching teams

Emotional
Disorders Team

EIP
Early Intervention in
Psychosis Team

Neurodevelopmental
Disorders Team

Self Harm, Paediatric Liaison,
Children Looked After & Support After
Adoption

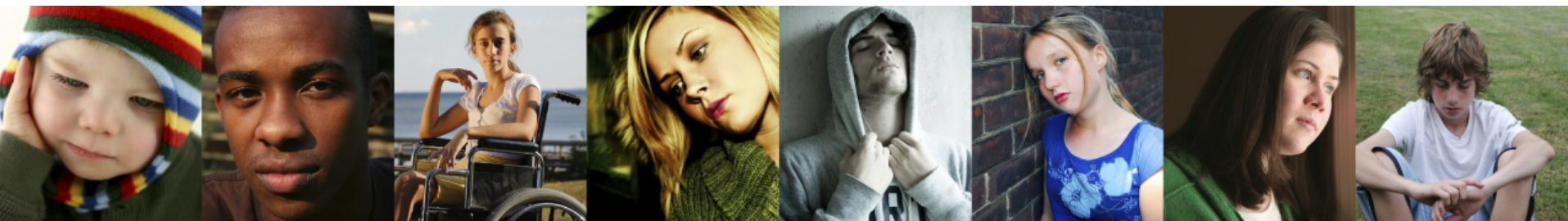
WOTCH & Specialist
Learning Disability Team
[provided by NCH]

Highly Specialist Child and Adolescent Mental Health Tier 4

Specialist and Highly Specialist Services

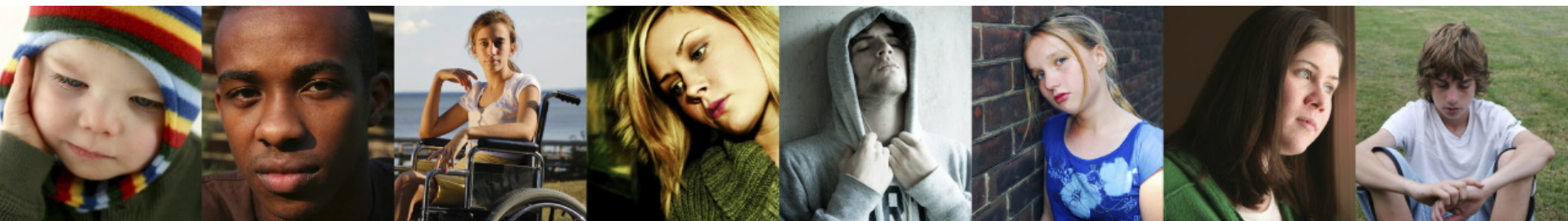
Number of developments that include:

- Countywide Targeted Tier 2 service
- Remodelled Specialist Tier 3 Service
- Development of Integrated Care Pathway(s)
- Single Point of access/referral
- CAMHS Publicity Materials-information for professionals, children, young people and families
- Access/Referral (CD Rom) includes slides that outline most appropriate support for clients, built around '*Presenting Issues Triangles*'

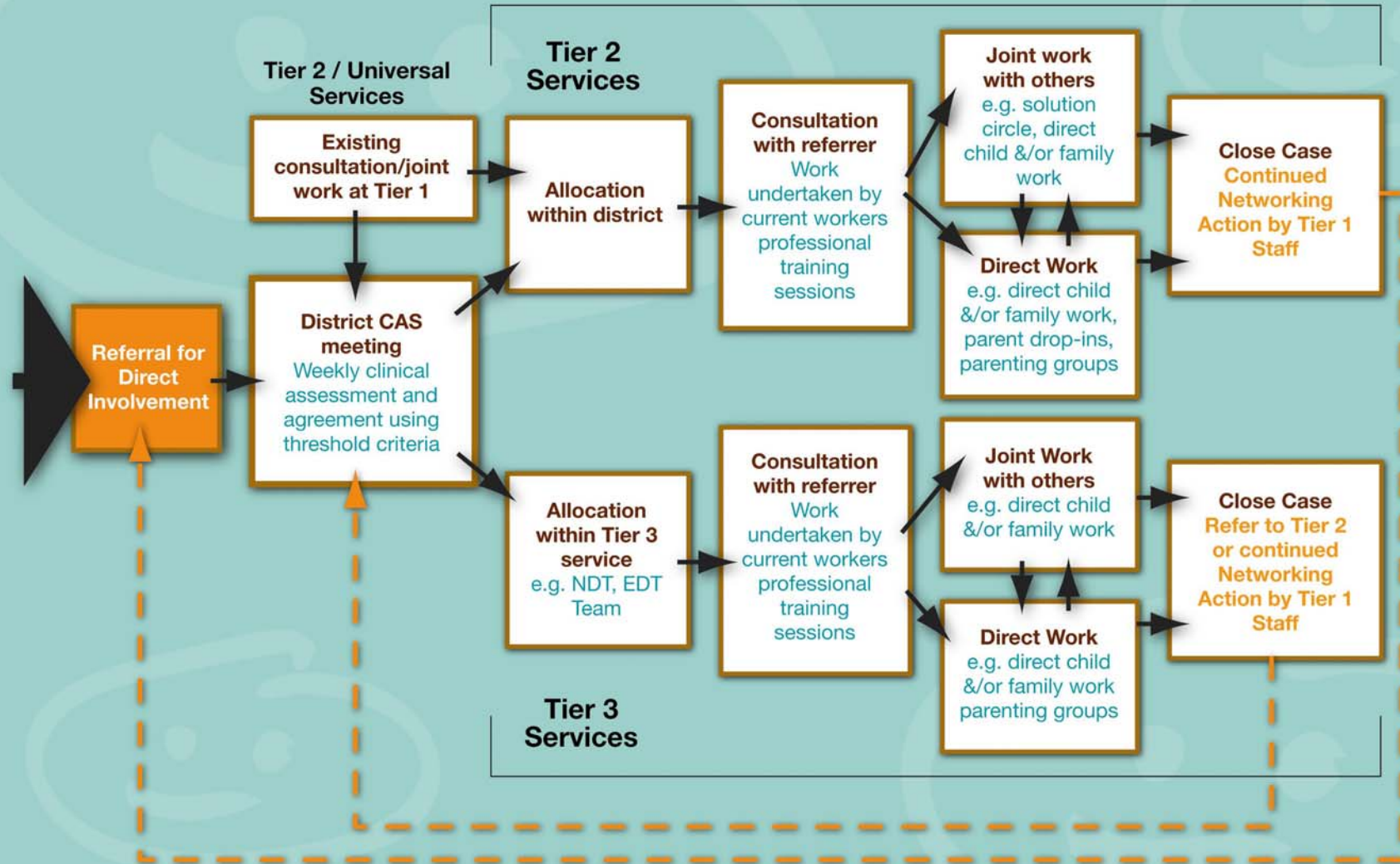


Including...

- CAMHS Workforce Action Plan
- Drama in Schools **Forum Theatre** - Oct/Nov 2008 possibly in 2009
- Focus Groups gaining insight & perspectives of Service users –**undertaken by Young Minds**
- Annual CAMHS Conference-first conference to be held in 2009
- Regional commissioning arrangements for Highly Specialist in patient beds



Single Point of Access Flowchart



Nottinghamshire CAMHS Partnership

- Nottinghamshire CAMHS Strategy 2008-2011 this is informed by...CAMHS Self Assessment Matrix
- CAMHS Workforce Action Plan Sept 2008-March 2009
- NI 50 Reference Group - Terms of Reference
- Range of CAMHS Publicity Materials including a range of posters and postcards for children, young people and families

