

High Speed 2

proposed network

22nd March 2013

Jim Bamford



Nottinghamshire County Council



Nottingham
City Council

Government plans

HS1 is international

- London – Channel tunnel – Paris & Brussels

HS2 is within Britain

- A 'Y'-shaped network
- Phase 1 London – Birmingham
- Phase 2

Birmingham – **E Midlands** – Sheffield – Leeds
and

Birmingham – Manchester

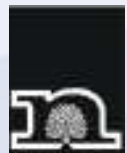
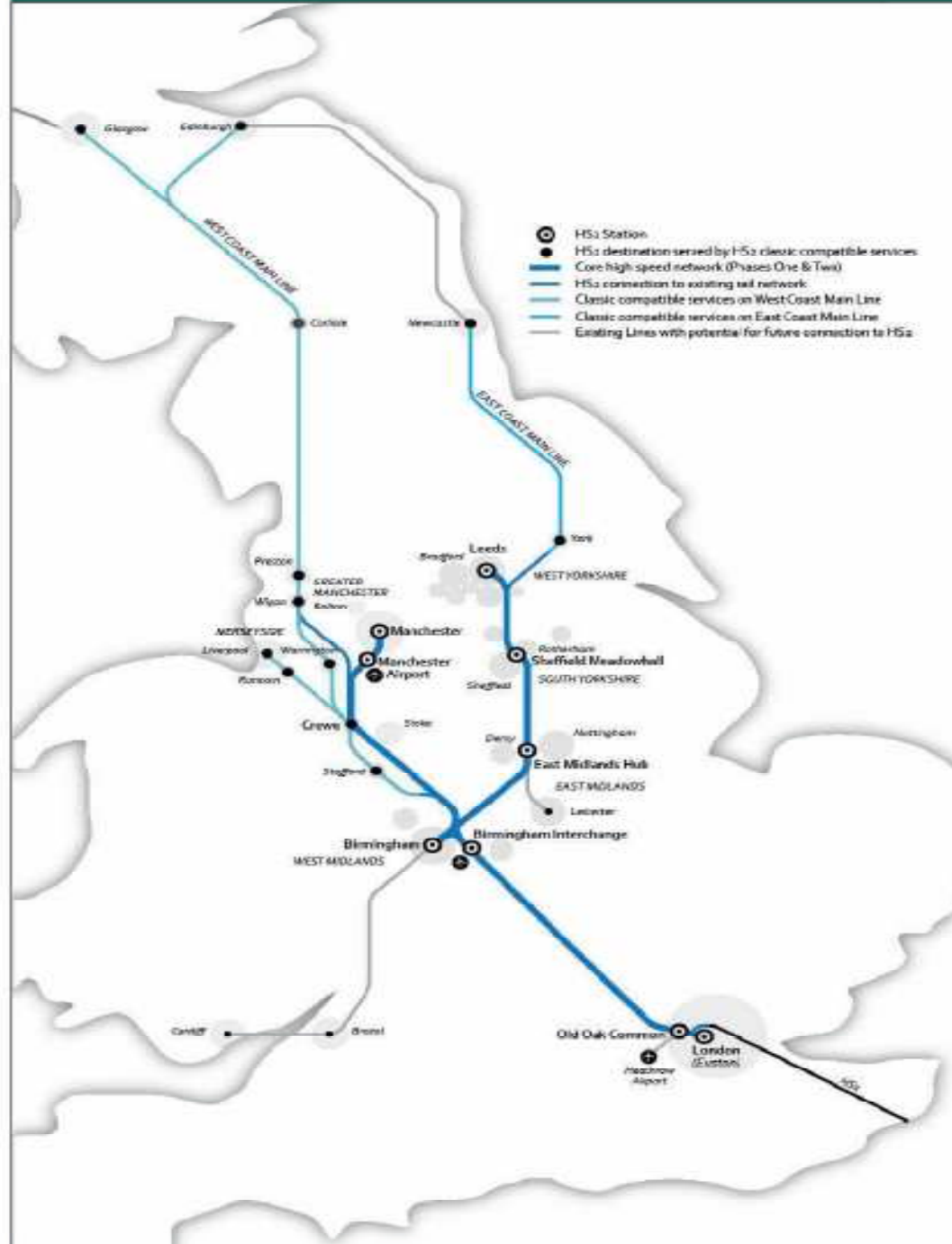


Nottinghamshire County Council



Nottingham
City Council

A Vision for High Speed Britain



Nottingham



**Nottingham
City Council**

“An engine for growth”

“HS2 is a powerful investment that will

- bring Britain closer together,
- fuel regeneration in deprived areas, and
- add muscle to all parts of our national economy”



Nottinghamshire County Council



Nottingham
City Council

Current status

Phase 1 London – Birmingham is a precise route that was adopted in 2012 following consultation.

For Phase 2 through the East Midlands

- Government is committed in principle to eastern arm of the route
- Has just published (26th January) its **initial proposal**, inc route and **station location at Toton**
- Will undertake full public consultation starting “summer” 2013 & ending March 2014



Nottinghamshire County Council



Nottingham
City Council

Compensation

- Government committed to an 'Exceptional hardship' scheme
- Available in advance of statutory compensation
- Proposed scheme published for consultation, which closes on 29th April 2013



Next steps

- Summer 2013 - Formal proposed route published, & consultation period commences
- March 2014 - consultation closes
- Late 2014 - announcement of the chosen route for phase 2
- 2015 Target date for Royal Assent for the Hybrid Bill, containing legal powers to construct HS2
- 2019 onwards Construction period (starts and ends at different times and at different points along the route)
- 2026 phase 1 opens (London – Birmingham)
- **2033 phase 2 opens (inc East Midlands)**



Sources of Information

- General is published on: www.hs2.org.uk/phase-two
- detailed maps are available on the DfT (Department for Transport) website
<https://www.gov.uk/hs2-phase-two-initial-preferred-route-plan-and-profile-maps>
- The Public Enquiries Team can be contacted on 020 7944 4908 or HS2enquiries@hs2.org.uk

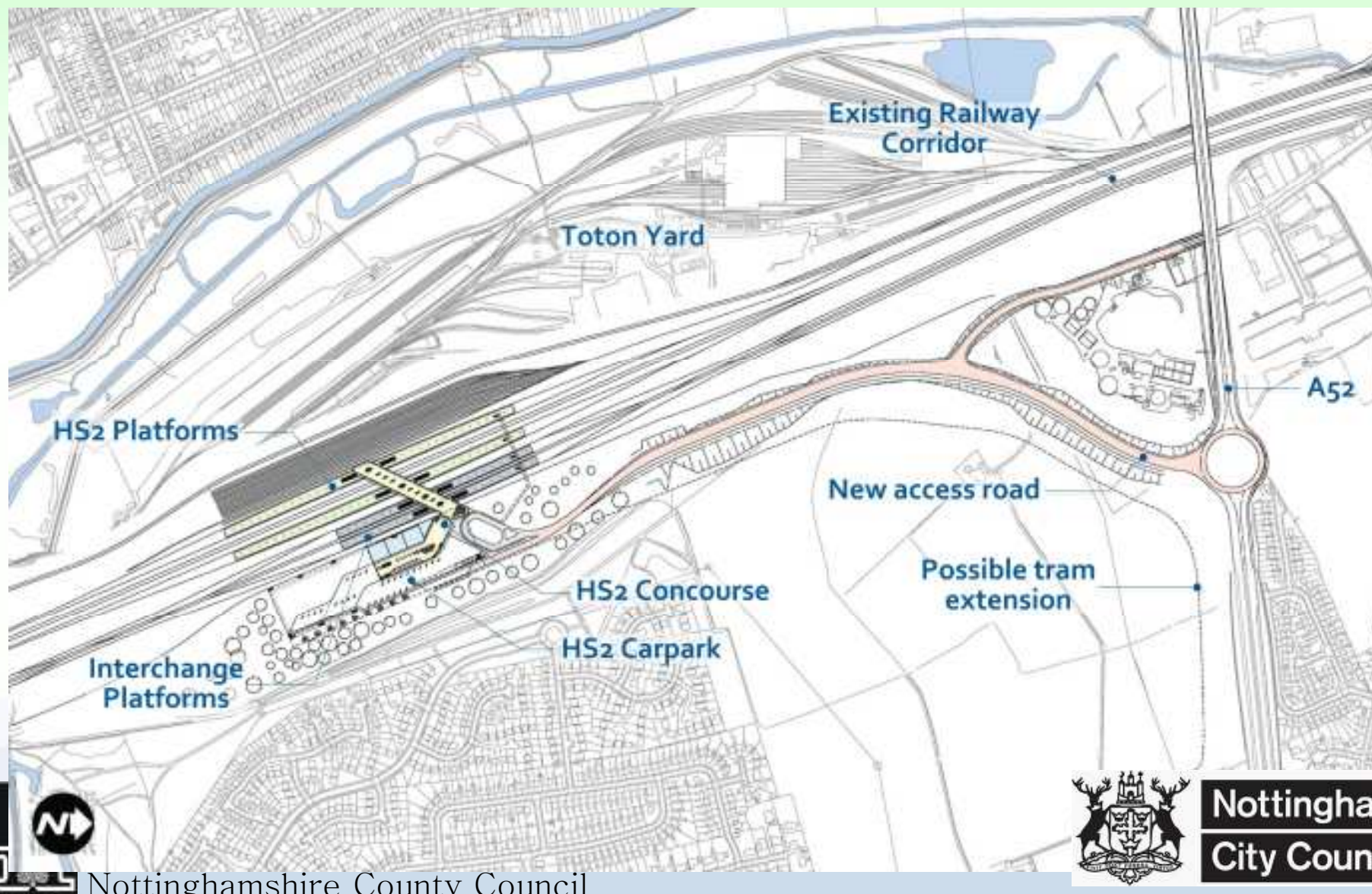


Nottinghamshire County Council

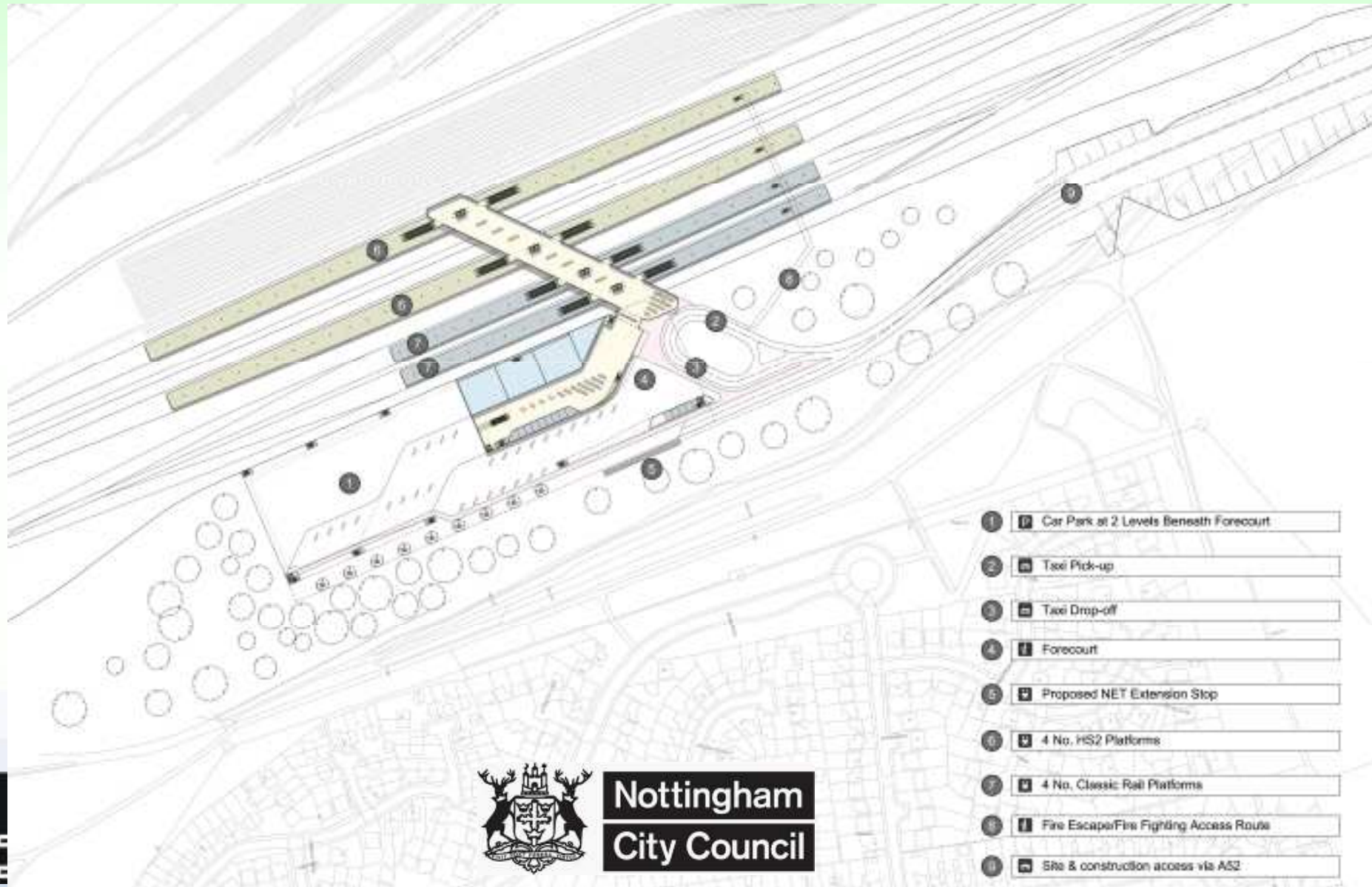


Nottingham
City Council

Toton station map



Toton Station Map



Toton station illustration



Station proposition includes;

- HS2 station, station facilities, carpark, etc
- Highway connection to A52
- Extension of NET from Toton Park & Ride
- Infrastructure to support classic interchange



Nottinghamshire County Council



Nottingham
City Council

Key Issues for EM Hub

- NET extension to HS2 station
- A52 new junction for station access
- Railway Connectivity – NR to validate classic infrastructure assumptions
- Car Parking – fit with local transport policy
- Comments from Delivery Partners?



Nottinghamshire County Council



Nottingham
City Council

