



Catherine Cook
Strategy & Partnerships Manager
HLG



About HLG

- Local membership and specialist infrastructure organisation. Specialist within Nottingham City and Nottinghamshire County Infrastructure Consortiums
- Expertise - Housing, Homelessness, Health & Wellbeing, Vulnerable People, Social Exclusion
- Independent. Links with Regional & National agenda
- Long history of influencing & co-ordination
- Key facilitator & enabler of collective consultation via networks/meetings/forums
- Third Sector lead in a number of areas supporting local strategic work of partners

Bringing People, Policy and Practice Together

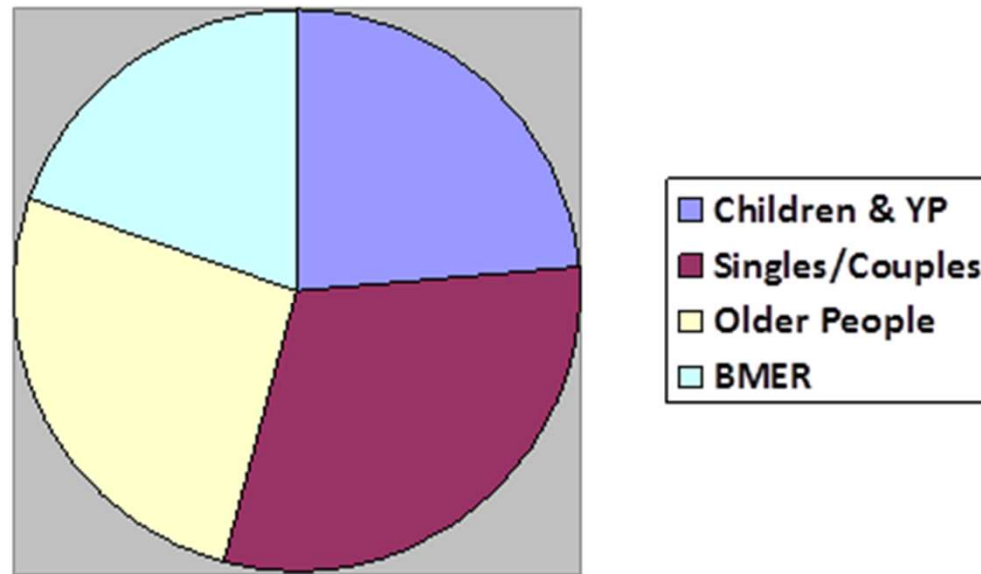




- City specific Third Sector Health & Wellbeing Provider Forum (HWB3)
- HWB3 created via City Health & Wellbeing Board
- Initially developed by NCC in consultation with 3S
- Forum and steering group structure agreed, election process held, terms of reference agreed
- Independence a key principle
- HLG contracted by NCC to develop and administrate this work

HWB3: Who's In it?

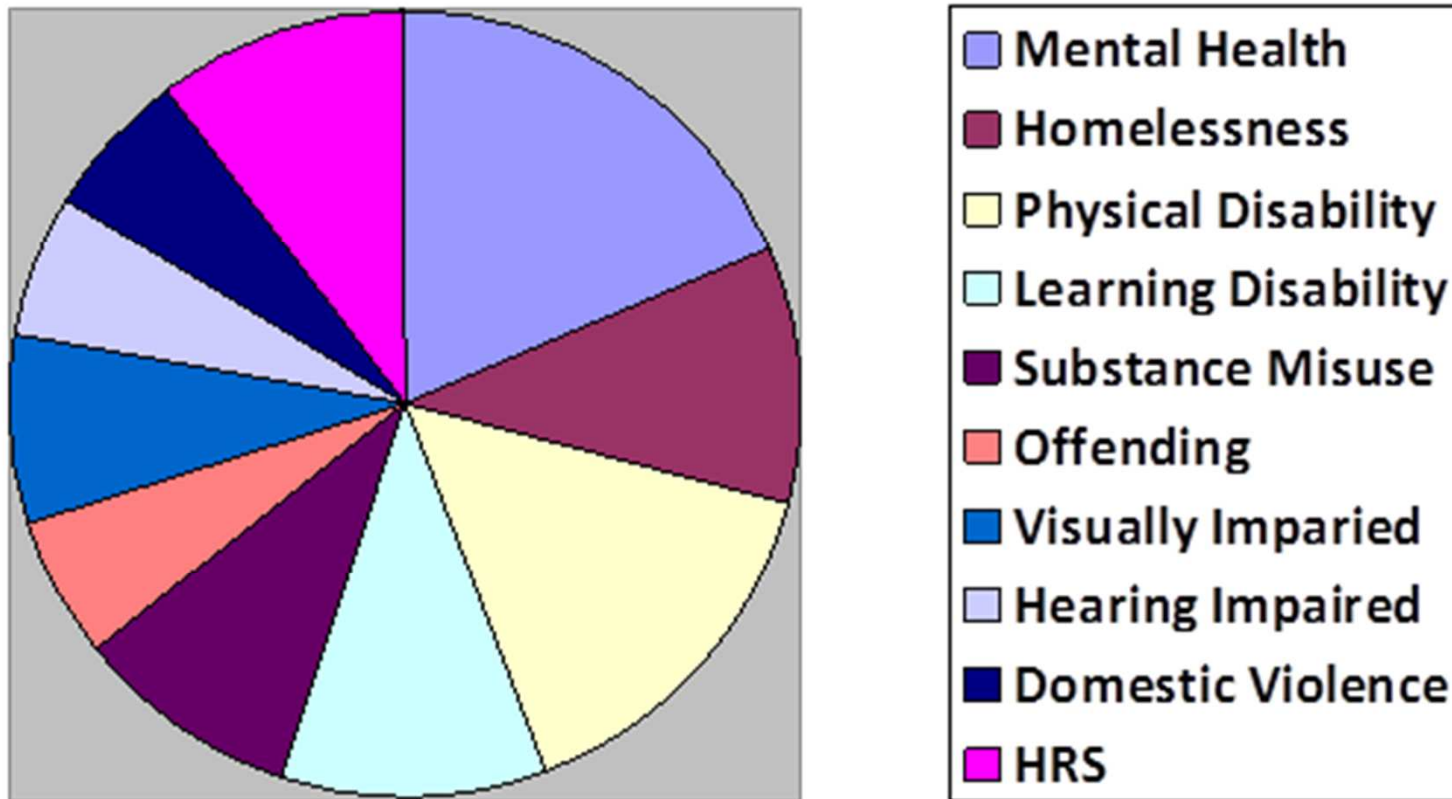
- **121** Member groups/organisations supporting wide range of client groups
- Governed by HWB3 steering group - **16** members
- Very diverse range of organisations, micro-large
- Although City Specific, many members also deliver services across the County



Bringing People, Policy and Practice Together



HWB3 Membership Breakdown



Bringing People, Policy and Practice Together



What is Working Well?

- Communication between agencies is improving, albeit slowly
- Wider communication is improving for City – networks, forums, engagement opportunities, information sharing etc.
- Community based health & wellbeing services – particularly drop ins
- Emergence of more ‘holistic’ service design in pockets – but much more of this needed!

What Isn't Working So Well?

- Lack of join up between HWBB & CCG at a strategic level – particularly re 3S engagement
- Confusion over County/City/Joint responsibilities
- Access to GPs – something of a lottery
- The specific needs of some groups not being met within health services e.g deaf community, LGBT
- Rising complexity of need coming into 3S services not configured to meet them with no additional resource/investment to combat this
- Some GPs seem unaware of or uninterested in 3S services on offer

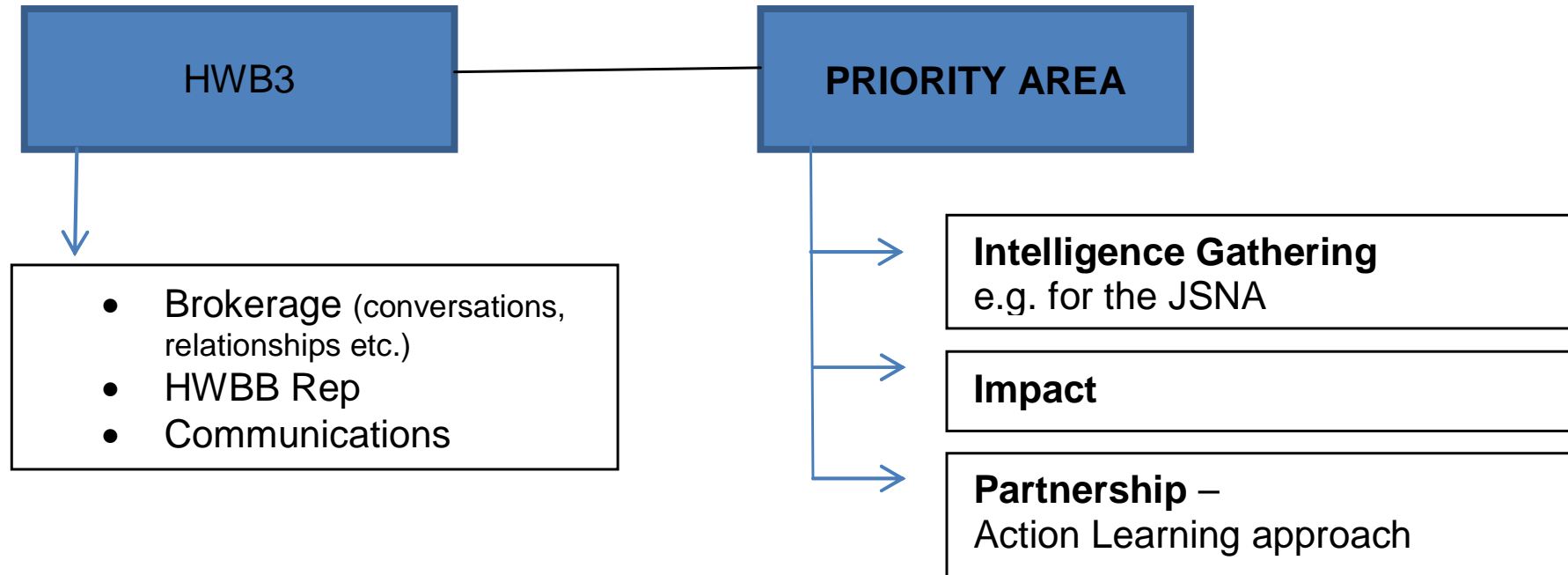
Bringing People, Policy and Practice Together



Concerns for Scrutiny

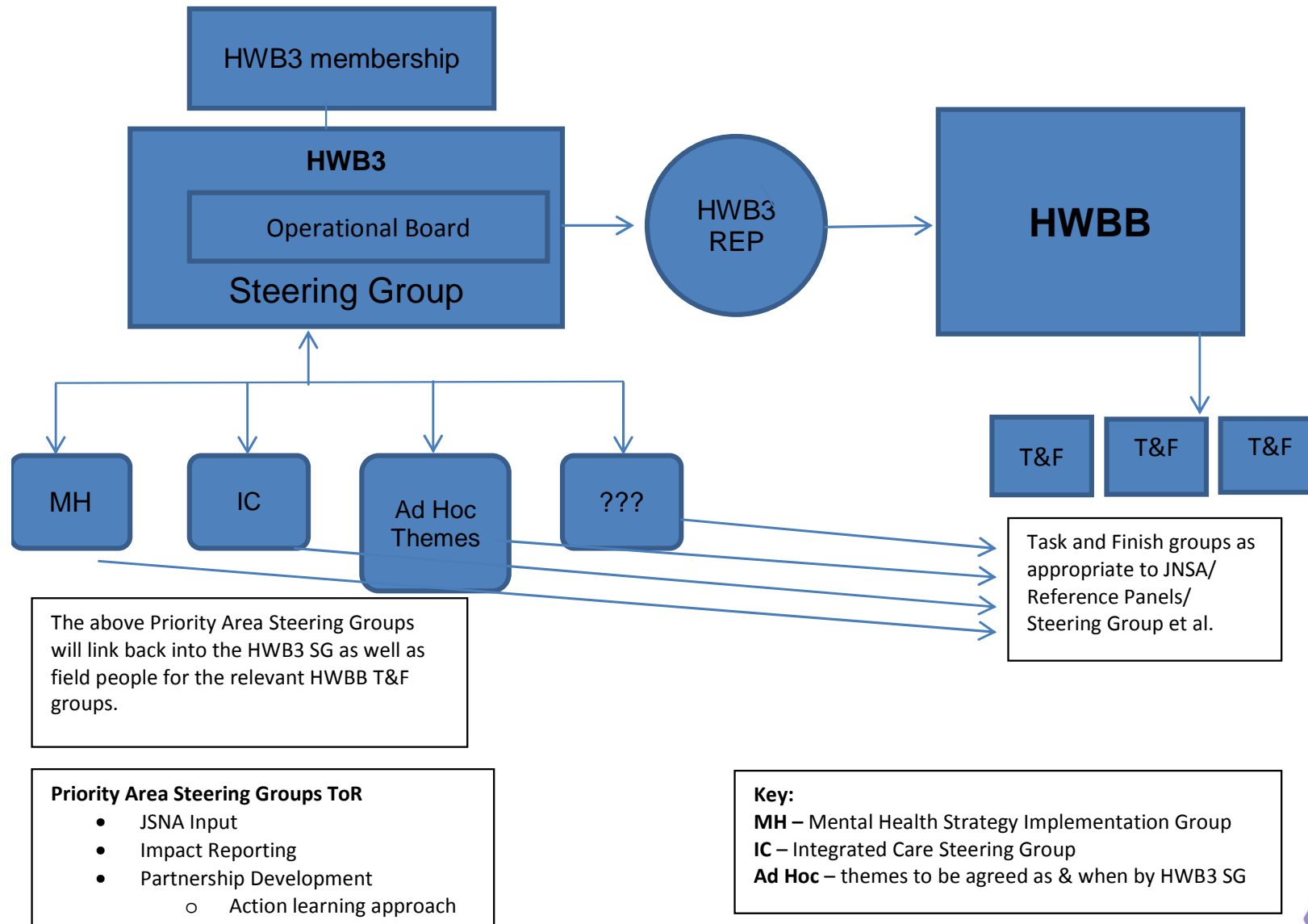
- Undervaluing of the services being provided by 3S & outcomes they achieve
- Commissioning process - smaller organisations are constantly at a disadvantage & being squeezed out of market; consortia approach not working for many
- Funding and sustainability of 3S services – rising demand coupled with year on year disinvestment
- Lack of awareness of/cohesive involvement within JSNA process – both City & County
- Lack of wide consultation with 3S & service users over development of NCC Procurement Strategy

Role and Function of HWB3



The Priority Areas are the areas of work that the steering group identify as those that can be given precedence by the HWB3 membership and steering group. (i.e. Mental Health/ Integrated Care/Ad hoc themed working groups to be convened in between the main HWB3 SG, which will meet quarterly)

Strategic Model



Bringing People, Policy and Practice Together



HWB3 Thoughts on JSNA

- Mixed awareness of what JSNA is. Most have a 'Basic' level of knowledge only
- Membership keen to be involved in conversations early on, but frustration with providing data in the past and then it never being utilised/acknowledged
- Top 3 JSNA themes HWB3 interested in contributing to:
 - Mental Health - Adults
 - Housing
 - Children & Young People's Health/Mental Health

Further Information & Contacts

- www.hlg.org.uk
- www.hwb3nottingham.org.uk – for background only.
This website content is in the process of being moved & integrated into HLG's website

HWB3 Contract Leads at HLG:

- Catherine Cook: catherine.cook@hlg.org.uk
- Bea Giaquinto: bea.giaquinto@hlg.org.uk

Current 3S City Health & Wellbeing Board Rep:

- Leslie McDonald:
leslie.Mcdonald@nottinghamcounsellingcentre.org.uk