

**16 April 2013****Agenda Item: 9****REPORT OF THE DIRECTOR OF PUBLIC HEALTH****PUBLIC HEALTH DEPARTMENTAL STRUCTURE****Purpose of the Report**

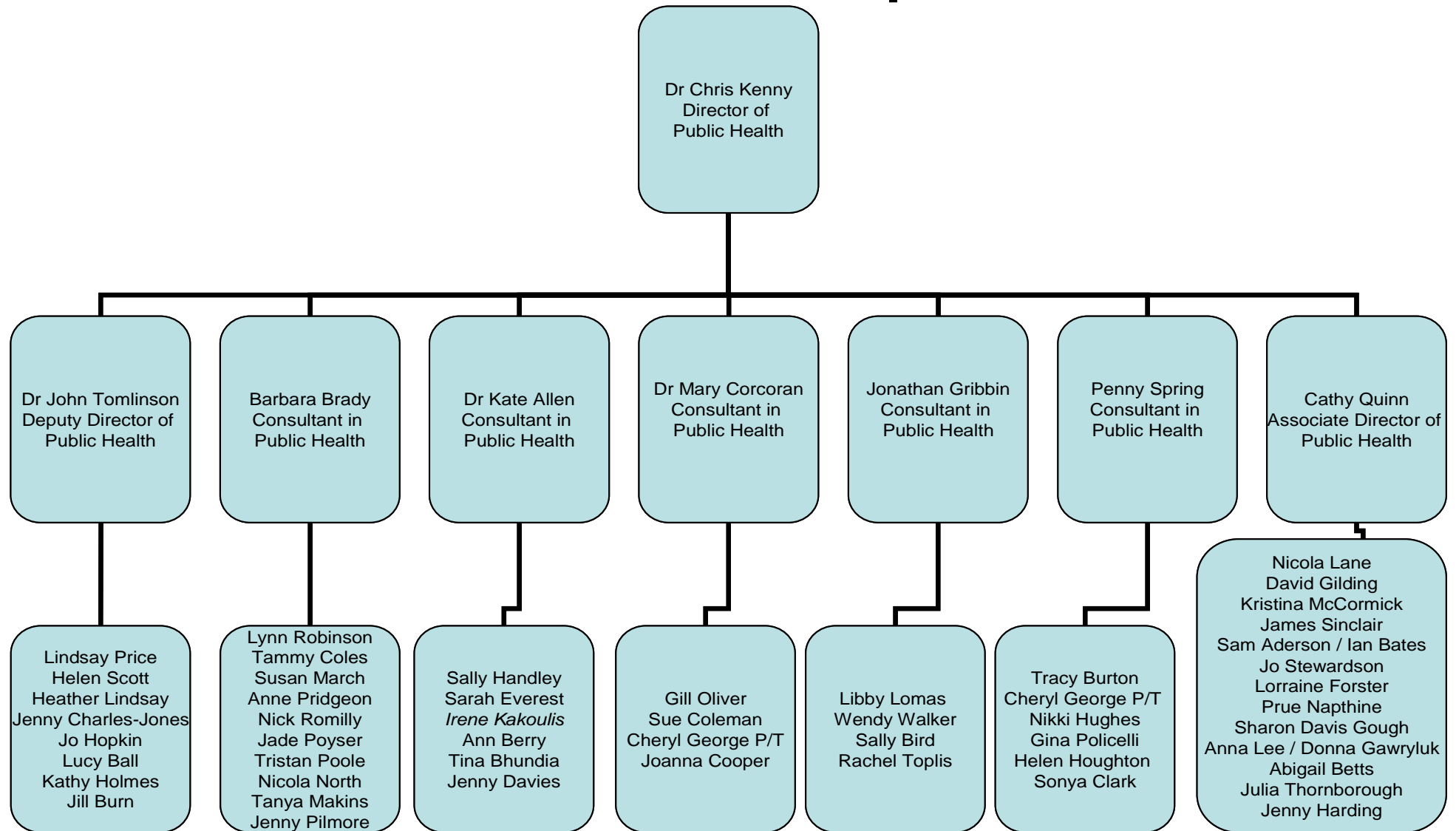
1. This report provides information on the current staffing structure within Nottinghamshire County Public Health.

**Information and Advice**

2. Before April 2013, Public Health was the responsibility of NHS Primary Care Trusts. Within Nottinghamshire, the larger Public Health function was held within Nottinghamshire County PCT, and a small team was also employed by Bassetlaw PCT. From 1 April 2013, Public Health becomes a statutory function of the County Council, and the two teams will merge to form the new Public Health department within the Council.
3. At the last meeting, the Public Health Subcommittee members asked for further information on the structure of Public Health department within the Council. A high level structure is illustrated in **Figure One**, along with a full description of teams and functions in **Appendix One**. (NB: Appendix One includes both Nottinghamshire County and Nottingham City departments and is correct as for 1 February, but is currently being reviewed for April onwards.)
4. The Department is accountable to Dr Chris Kenny, Director of Public Health, who in turn, is accountable to the Chief Executive. Dr Kenny provides overall leadership of both County and City Public Health departments and management of all senior staff. He is also a member of Corporate Leadership Teams of Nottinghamshire County Council and Nottingham City Council, and has overall responsibility for ensuring Public Health leadership, input and support for all Clinical Commissioning Groups across Nottinghamshire and Nottingham City.
5. The senior management team within Nottinghamshire County Council includes six Consultants in Public Health (including the Deputy Director of Public Health) and one Associate Director of Public Health.

Figure One

# Public Health Department



6. Each member of the senior team has a range of staff that report to them providing support to their areas of work. The department consists of:
  - 11 Senior Public Health Managers
  - 23 Public Health Managers
  - 5 Public Health Information Analysts
  - 1 Reablement Evaluation Officer
  - 2 Infection Control matrons
  - 1 Public Health assistant
  - 9 Administrative staff
7. The Public Health workforce have specialist training and experience to undertake intelligent commissioning of Public Health services which improve health and wellbeing and reduce health inequalities across local communities. The department performs this role through using Public Health and scientific skills to:
  - Identify the level of Public Health needs within local communities
  - Analyse evidence to define the services and interventions that are known to work;
  - Compare cost effectiveness (or value for money) of a range of interventions;
  - Set service quality standards based on evidence
  - Define, monitor and analyse Public Health information and outcomes, comparing these with neighbouring areas.
  - Improve collaboration and integration across health, social care and third sector organisations.
8. The Public Health department also holds a training responsibility, in conjunction with the Public Health departments across Nottinghamshire, Derbyshire and Leicestershire Northamptonshire and Lincolnshire. This role includes the mentoring of Public Health speciality registrars and Foundation Year Two doctors. These members of staff are not employed by the Council but undertake a placement within the Public Health department.

## **Statutory and Policy Implications**

9. This report has been compiled after consideration of implications in respect of finance, equal opportunities, human resources, crime and disorder, human rights, the safeguarding of children, sustainability and the environment and those using the service and where such implications are material they are described below. Appropriate consultation has been undertaken and advice sought on these issues as required.

## **RECOMMENDATION/S**

- 1) The Public Health Sub-Committee are asked to note the information provided on the Public Health Department.

**Dr Chris Kenny**  
**Director of Public Health**

**For any enquiries about this report please contact:**  
**Cathy Quinn, Associate Director of Public Health**

### **Constitutional Comments (NAB 28.03.13)**

10. Public Health Sub-Committee has authority to consider the matter set out in this report by virtue of its terms of reference.

### **Financial Comments (ZM 28.03.13)**

11. There are no financial implications arising directly from this report.

### **Background Papers**

Except for previously published documents, which will be available elsewhere, the documents listed here will be available for inspection in accordance with Section 100D of the Local Government Act 1972.

Public Health Business Plan 2012-13 revised July 2012.

### **Electoral Division(s) and Member(s) Affected**

All