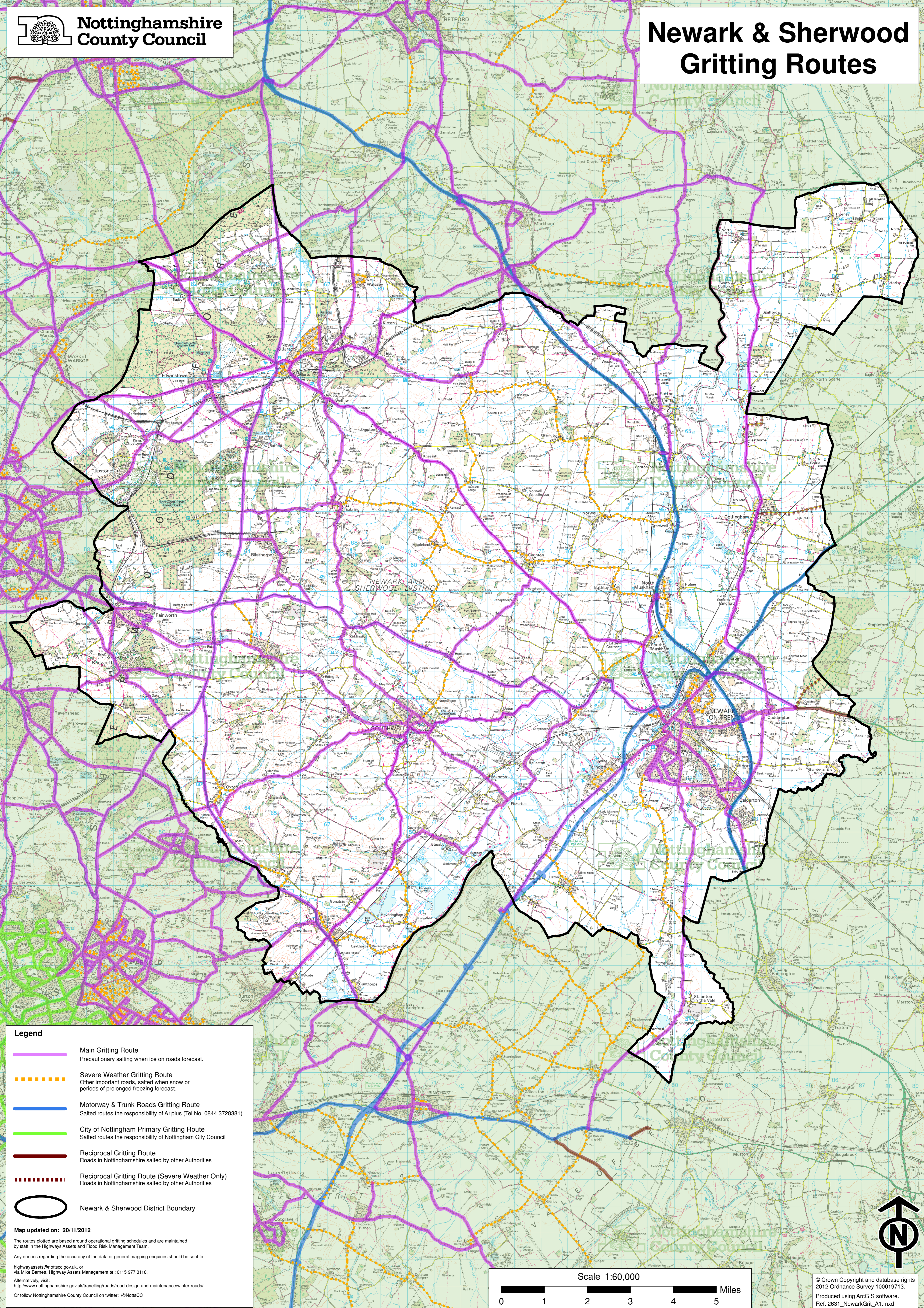




# Newark & Sherwood Gritting Routes



### Legend

-  **Main Gritting Route**  
Precautionary salting when ice on roads forecast.
-  **Severe Weather Gritting Route**  
Other important roads, salting when snow or periods of prolonged freezing forecast.
-  **Motorway & Trunk Roads Gritting Route**  
Salted routes the responsibility of A1plus (Tel No. 0844 3728381)
-  **City of Nottingham Primary Gritting Route**  
Salted routes the responsibility of Nottingham City Council
-  **Reciprocal Gritting Route**  
Roads in Nottinghamshire salted by other Authorities
-  **Reciprocal Gritting Route (Severe Weather Only)**  
Roads in Nottinghamshire salted by other Authorities
-  **Newark & Sherwood District Boundary**

Map updated on: 20/11/2012

The routes plotted are based around operational gritting schedules and are maintained by staff in the Highways Assets and Flood Risk Management Team.

Any queries regarding the accuracy of the data or general mapping enquiries should be sent to:

highwaysassets@notscc.gov.uk, or  
via Mike Barnett, Highways Assets Management tel: 0115 977 3118.

Alternatively, visit:  
<http://www.nottinghamshire.gov.uk/travelling/roads/road-design-and-maintenance/winter-roads/>

Or follow Nottinghamshire County Council on twitter: @NottsCC

Scale 1:60,000

